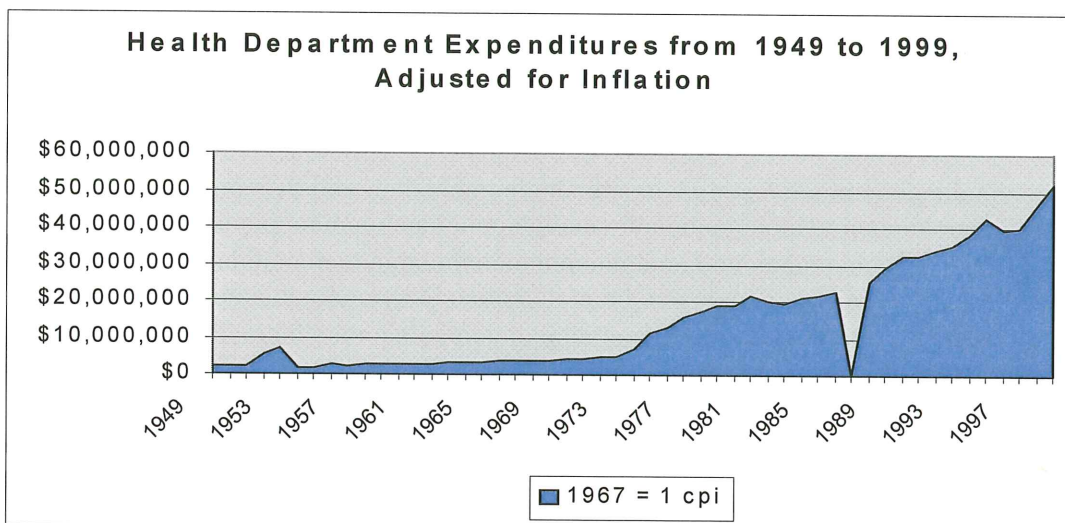
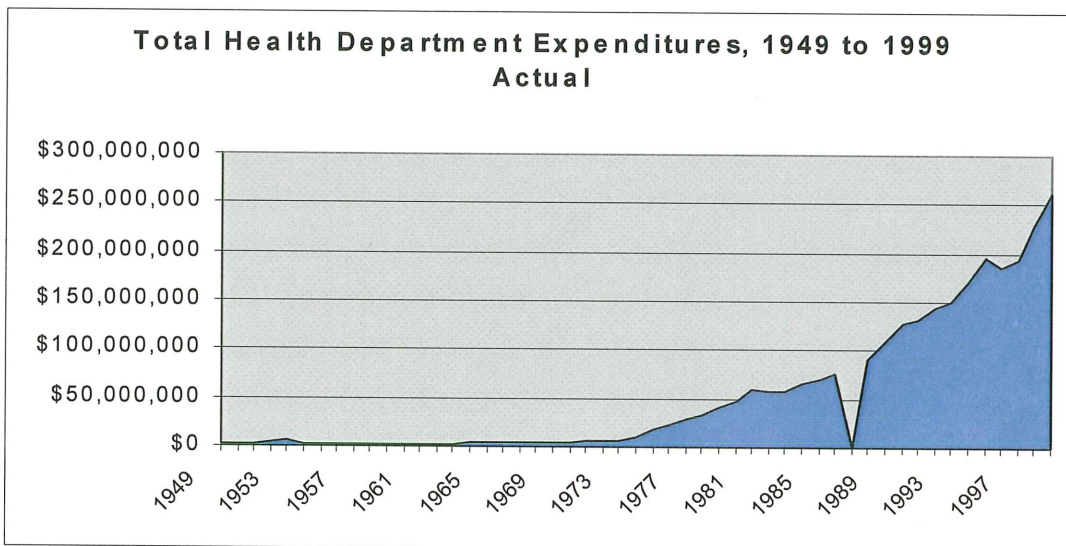


## Appendix B:

# Expenditures, Employees, Leadership

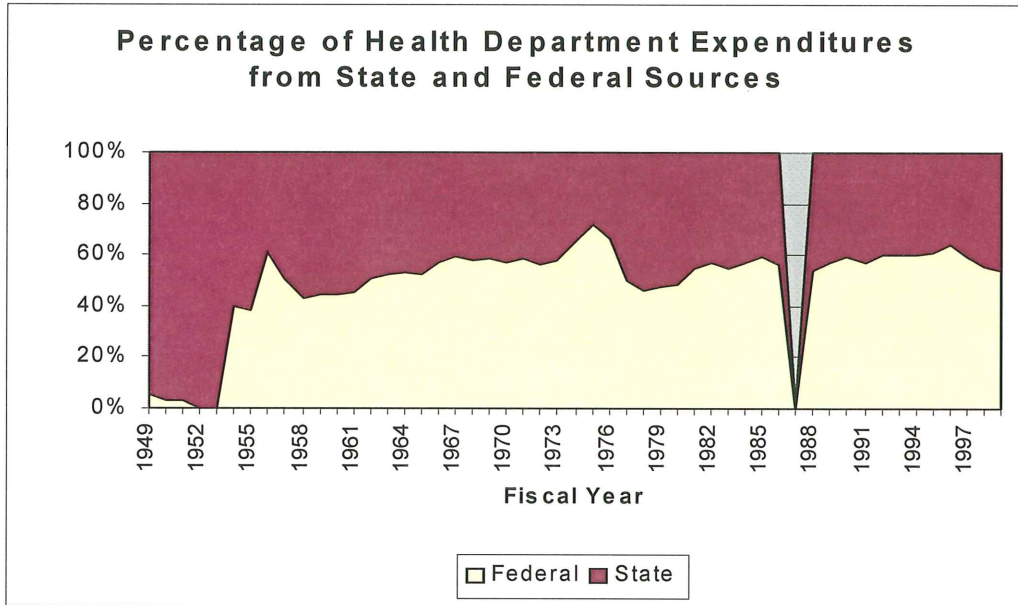
### Minnesota Health Department Expenditures<sup>1504</sup>

Data include all appropriated funds, general, state government special revenue, health care access, trunk highway and environment funds, and endowment.

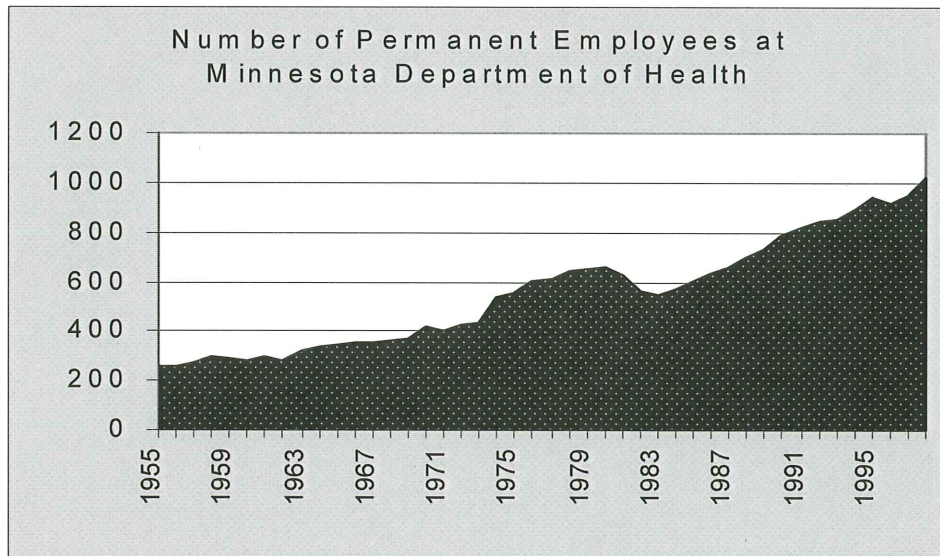


<sup>1504</sup> Data from MDH; 1987 data not available.

**Proportion of Federal and State Funding for MDH**



**Number of Employees at Minnesota Department of Health**



**Minnesota State Board of Health Presidents**  
*(Board abolished in 1977)*

**Thomas B. Magath, M.D. – 1949**

**Ruth E. Boynton, M.D. – 1950 to 1951**

**Frederick W. Behmler, M.D. – 1952 to 1954**

**Frank H. Krusen, M.D. – 1955 to 1963**

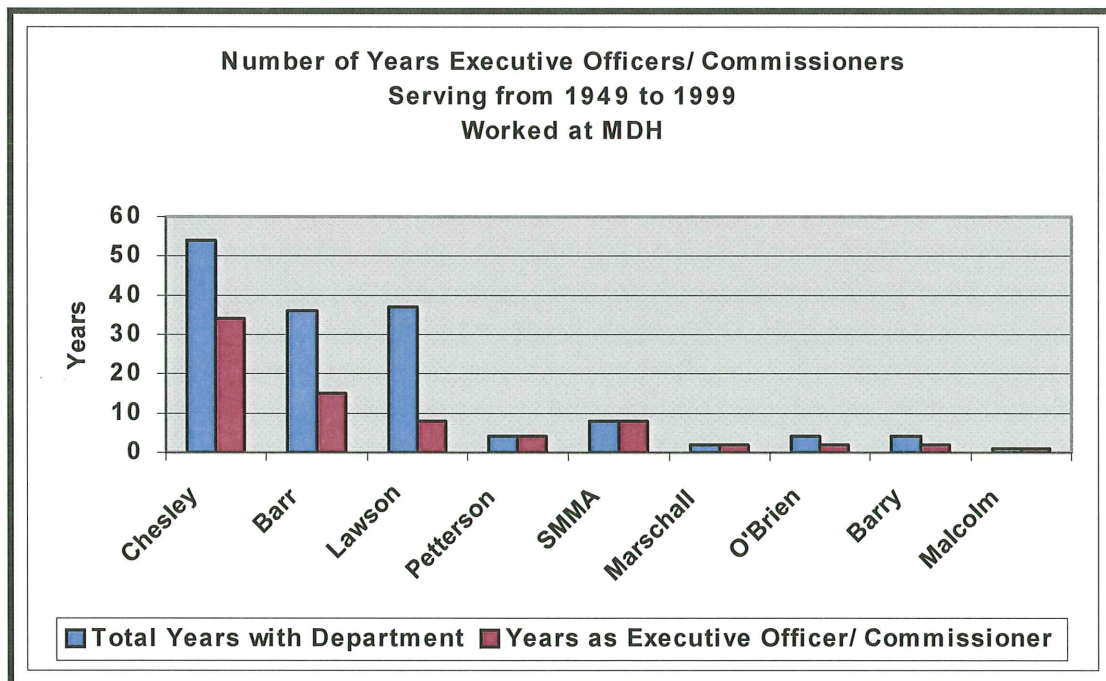
**Raymond J. Jackman, M.D. – 1963 to 1970**

**Arnold D. Delger, B.S. Pharm – 1971**

**John H. Westerman, M.H.A. – 1972 to 1975**

**Robert Willmarth – 1976**

**Valentine O'Malley, M.D. – 1977**



**Executive Officers and Commissioners<sup>1505</sup> at Department of Health**

**Albert J. Chesley, M.D. – 1949 to 1955** (Executive Officer since 1921)

Deputy Robert N. Barr, M.D., 1949 to 1955

**Robert N. Barr, M.D. – 1955 to 1970**

Deputy Jerome Brower, L.L.B., M.A., 1955 to 1959

Deputy Henry Bauer, Ph.D., 1960 to 1966

Deputy Warren Lawson, M.D., M.P.H., 1967 to 1970

**Warren Lawson, M.D., M.P.H. – 1970 to 1978**

Assistant Executive Officer of Administration, Duane H. Johnson, 1973 to 1978

Assistant Executive Officer of Programs, Ellen Fifer, M.D., 1973 to 1978

Assistant Commissioner of Community Development, Robert Hiller 1976 to 1978

**George Pettersen, M.D. – 1979 to 1983**

Deputy Commissioner Duane H. Johnson, 1980 to 1982

Assistant Commissioner of Administration, Duane H. Johnson, 1979 to 1980

Assistant Commissioner of Administrative Services, Thomas Maloy, 1980 to 1982

Assistant Commissioner of Programs/Health Services, Ellen Fifer, M.D., 1979

Assistant Commissioner of Community Development, Robert Hiller, 1979

Assistant Commissioner of Health Resources, James Brunsgaard, 1979 to 1981

**Sister Mary Madonna Ashton – 1983 to 1991**

Deputy Valentine O'Malley, M.D., 1983 to 1986

Deputy Daniel McInerney, L.L.B., M.P.H., 1986 to 1991

Assistant Commissioner of Community Services, Daniel McInerney, L.L.B., M.P.H., 1983 to 1984

Assistant Commissioner of Health Delivery Systems, Daniel McInerney, 1984 to 1986

Assistant Commissioner of Health Protection, Michael Finn, 1986 to 1991

Assistant Commissioner of Health Delivery Systems, Nancy Feldman, 1986 to 1991

Assistant Commissioner of Administration, Thomas Maloy, 1983 to 1991

**Marlene M. Marschall, R.N. – 1991 to 1993**

Deputy Mary Jo O'Brien, 1991 to 1993

Assistant Commissioner of Health Delivery Systems, Barbara Nerness, 1991 to 1993

Assistant Commissioner of Administration, Thomas Maloy, 1991 to 1993

Assistant Commissioner of Health Protection, Beverly Krogseng, 1991 to 1993

Assistant Commissioner of Health Protection, Christine Rice, 1993 to 1999

Assistant Commissioner of Health Care Resources and Systems, Andrea Walsh, 1991 to 1993

**Mary Jo O'Brien – 1993 to 1995**

Deputy Anne Barry, M.P.H., 1993 to 1995

Assistant Commissioner of Health Delivery Systems, Barbara Nerness, 1993 to 1994

Assistant Commissioner of Health Protection, Christine Rice, 1993 to 1995

Assistant Commissioner of Health Care Resources & Systems, Elizabeth Quam, 1993 to 1995

---

<sup>1505</sup> Includes only those commissioners who were approved during Senate hearings.

**Anne Barry, M.P.H. – 1995 to 1999**

Deputy Christine Rice, 1995 to 1997

Deputy Kirsten Libby, 1997 to 1998

Deputy Michael Moen, M.P.H., 1998 to 1999

Deputy Kelli Johnson, 1999

Assistant Commissioner of Health Quality Assurance, Elisabeth Quam, 1995

Assistant Commissioner of Health Protection, Kelli Johnson, 1996 to 1999

Assistant Commissioner of Health Systems & Special Populations, Barbara Colombo, 1996 to

**Jan Malcolm – 1999**

Deputy Julie Brunner, 1999

Assistant Commissioner of Health Protection Bureau, Aggie Leitheiser, 1999

Assistant Commissioner of Access and Quality Improvement Bureau, Richard Wexler, 1999

Assistant Commissioner of Family and Community Development Bureau, Gayle Hallin, 1999

Name of Division	Division Director	Dates Served
Environmental Sanitation	Herbert M. Bosch, M.P.H.	1949-50
Environmental Sanitation ( <i>Renamed Environmental Health in 1964</i> )	Frank L. Woodward, M.P.H.	1950-68
Environmental Health	Frederick F. Heisel, M.P.H.	1968-76
Environmental Health	David Giese	1977
Environmental Health	Richard Wade, Ph.D.	1977-78
Environmental Health	Roger DeRoos, Ph.D.	1979-83
Environmental Health	Ray Thron	1983-92
Environmental Health	Patricia Bloomgren	1992-99

Medical Laboratories	Paul Kabler, Ph.D., M.D., M.P.H.	1949
Medical Laboratories	Henry Bauer, Ph.D.	1949-76
Medical Laboratories	D. Stickle, Ph.D. (Acting Division Director)	1977
Medical Laboratories	C. Dwayne Morse, Dr. P.H.	1978-83
Public Health Labs	H. Markowitz	1984-86
Public Health Labs	Dr. Robert Lindner	1987-89
Public Health Labs	Pauline Bouchard	1989-99
Public Health Labs	Norman Crouch	1999

Preventable Disease ( <i>Renamed Disease Prevention and Control in 1973; Renamed Personal Health Services in 1975</i> )	D. S. Fleming, M.D., M.P.H.	1949-75
Personal Health Services	Barry Levy, M.D. (Acting Division Director)	1975-76
Personal Health Services	Grace Gumnit (Acting Division Director)	1976-78
Personal Health Services	Warren Lawson, M.D.	1979
Disease Prevention and Control	Andrew Dean, M.D.	1979-84
Disease Prevention and Health Promotion	Michael Moen, M.P.H.	1984-
Disease Prevention and Control	Aggie Leitheiser, M.P.H.	
Disease Prevention and Control	Martin LaVenture	To 1999

Departmental Administration ( <i>Renamed Administrative Services in 1956</i> )	Jerome W. Brower, L.L.B., M.A.	1949-59
Administrative Services	Henry Bauer, Ph.D.	1960-66
Administrative Services	Warren Lawson, M.D., M.P.H.	1966-72
Asst Executive Officer for Administration	Duane Johnson	1972-80
Asst Commissioner for Administration	Tom Maloy	1980-94
Finance and Administration	Tom Maloy	1995-96
Finance and Administration	Christine Everson	1996-98
Finance and Administrative Services	Dave Johnson	1999
Health Information and General Services	Robert Hiller, Ph.D.	1991-92
Health Information and General Services	Tom Maloy	1994



Special Services	Robert N. Barr, M.D., M.P.H.	1949-53
Local Health Services	Robert N. Barr, M.D., M.P.H.	1953-55
Local Health Administration	Hilbert Mark, M.D.	1956-58
Local Health Administration	William Harrison, M.D.	1958-73
Community Services and Development	Robert Hiller, Ph.D.	1973-75
Community Services and Development	Ernest Kramer, M. H.A.	1975
Community Services	Jerry Nida, M.D.	1980-82
Community Health Services	James Parker	1984-91
Community Health Services	Ryan Church	1991-99

Hospital Services ( <i>Renamed Health Facilities in 1973</i> )	Helen Knudsen, M. D., M.P.H.	1956-74
Health Facilities	Vacant	1975
Health Facilities ( <i>Renamed Health Systems in 1979; Renamed Health Resources in 1984</i> )	Janet Brodahl	1976-87
Health Resources	Michael Tripple	1987-90
Facility and Provider Compliance	Linda Sutherland	1990-99

Special Services	A. B. Rosenfield, M.D., M.P.H.	1956-72
Services for Children with Handicaps	Grace Gumnit (Acting Division Director)	1982-83
Maternal and Child Health	E. Hendricks	1983-84
Maternal and Child Health	Carolyn McKay, M.D.	1986-91
Maternal and Child Health	Pati Maier (Acting Division Director)	1991-92
Maternal and Child Health ( <i>Renamed Family Health in 1995</i> )	Donna Peterson, Ph.D.	1992-95
Health Promotion and Education	Richard Welch	1987-94
Family Health	Bert Hirschhorn, M.D.	1995-98
Family Health	Jan Jernell	1998-99

Policy and Communications	Patricia Conley	1999
---------------------------	-----------------	------

Health Manpower Services	Connie Larson	1976-81
Health Systems Development	Kathy Burek	1987-91
Health Care Delivery Systems ( <i>Renamed Occupational and Systems Compliance in 1995</i> )	Nanette Shroeder	1991-9x
Health Care Delivery Policy	Mary Kennedy	1995
Health Policy and Systems Compliance	David Giese	1996-99