

SWIPe Installation

FEBRUARY 2024

Introduction

SWIPe is an application that will need to be installed on any computer that will be used for the Minnesota WIC Information System, WINNIE. This program allows for peripheral equipment such as scanners and signature pads to be used with the WINNIE application.

Document Purpose

This document provides Information Technology groups with the necessary information required to install SWIPe on their computers. If SWIPe is already installed, please follow these same steps to update SWIPe.

Instructions for Windows 10

Downloading the SWIPe File

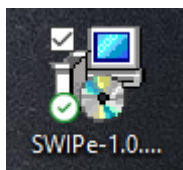
A Local Administrator account will need to be used to install SWIPe on each computer.

- For State supplied computers, log into the Tempuser account.
- For County machines, log into a local administrator account for that computer.

The SWIPe folder can be found on the FileZilla Agency Gateway site. Download the SWIPe-1.0.24018.1.msi file to the desktop.

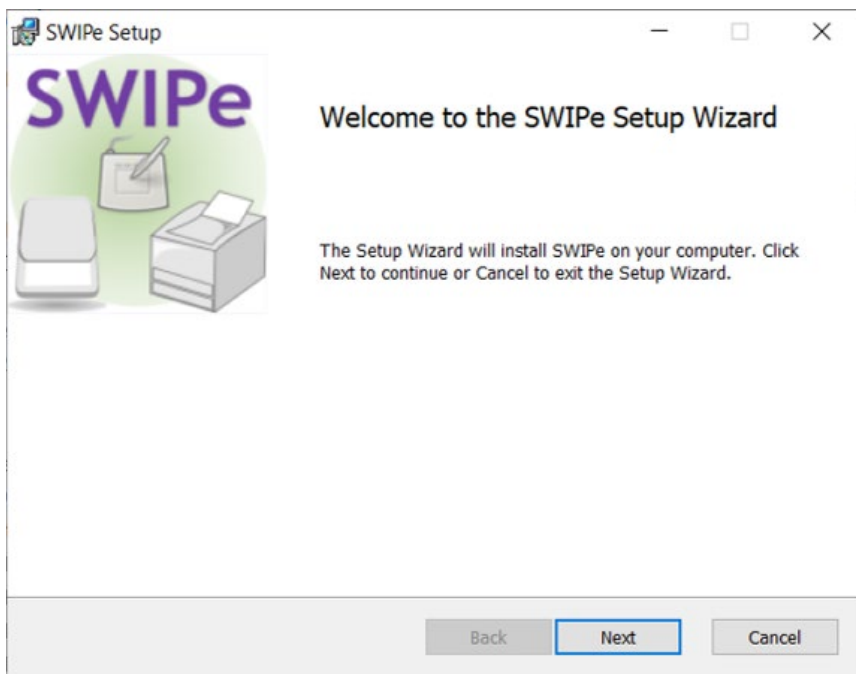
Installation Steps

- Once Downloaded, right click on the icon on the desktop.

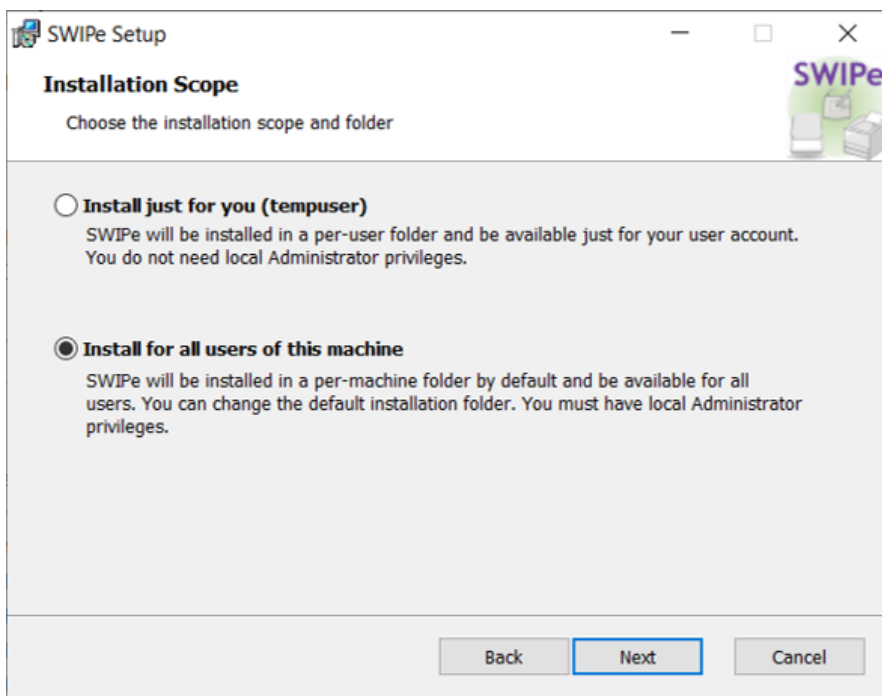


- Select Install.

SWIPE INSTALLATION

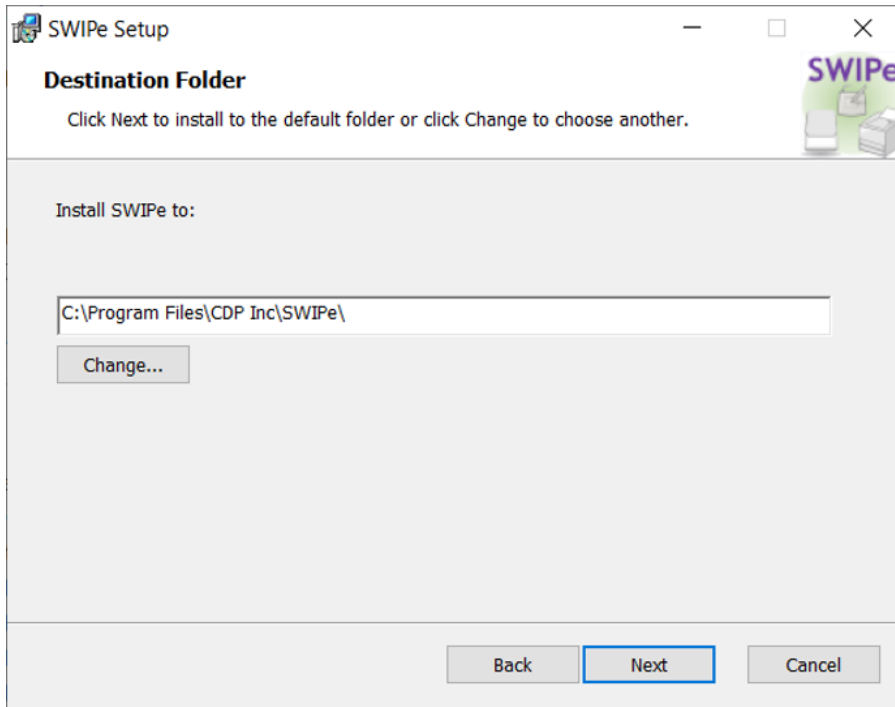


- Click the Next button on the Setup Wizard message.

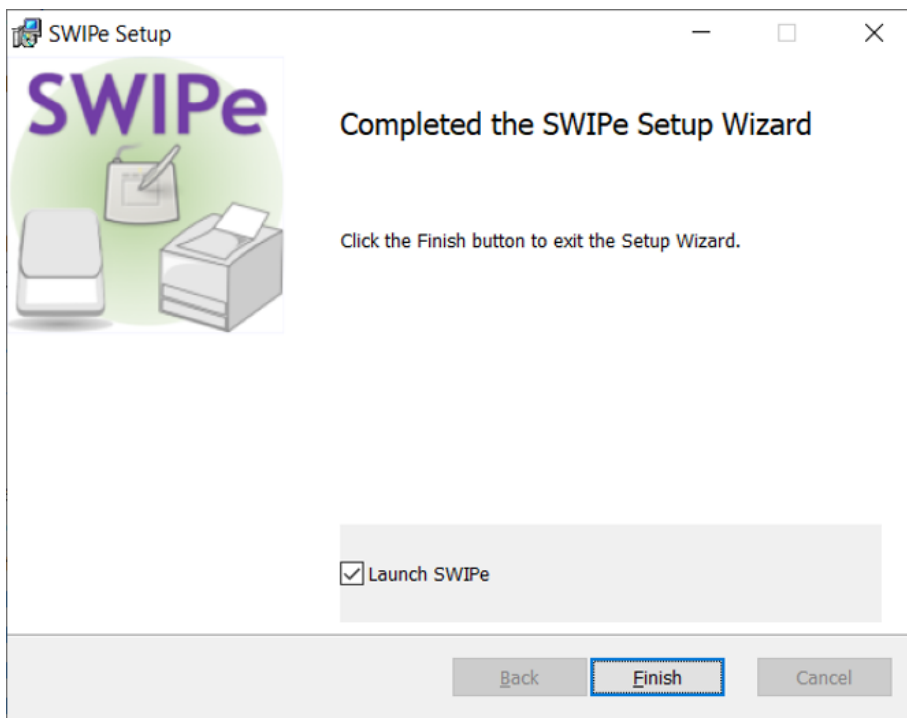


- Click the “Install for all users of this machine” radio button on the Installation Scope message.
- Click the Next button.

SWIPE INSTALLATION

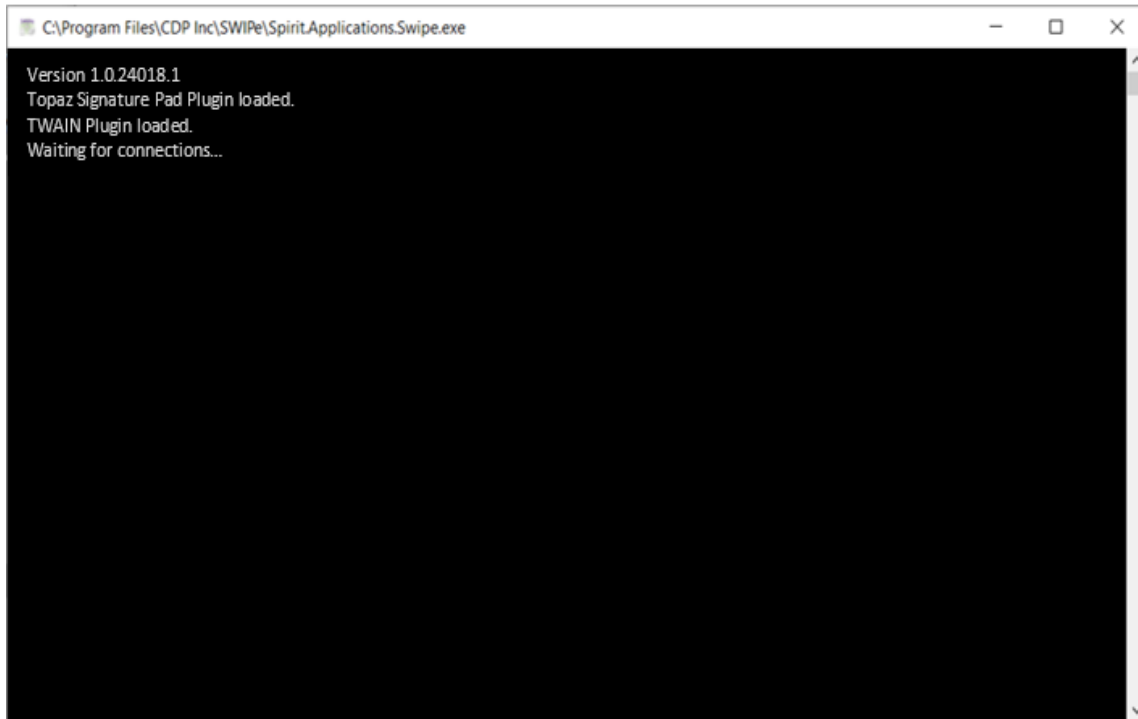


- Click the Next button on the Destination Folder message.
- A pop-up about making changes to the computer will display. Click Yes on this pop-up.



- Click the Finish button on the Completed Wizard message.

SWIPE INSTALLATION



This is the screen that displays when SWIPE is first opened.

Once this displays, SWIPE is ready for use with WINNIE.

Minnesota Department of Health - WIC Program, 625 Robert St N, PO BOX 64975, ST PAUL MN 55164-0975; 1-800-657-3942, health.wic@state.mn.us, www.health.state.mn.us; to obtain this information in a different format, call: 1-800-657-3942.

This institution is an equal opportunity provider.