

Health Care Practitioner Guidance for Minnesota's Medical Cannabis Program

Introduction

This document, based on guidance originally created in 2015 in partnership with the Institute for Clinical Systems Improvement (ICSI), is intended to help organizations, clinical practices, and health care practitioners establish policies and workflows for participation in the Minnesota Medical Cannabis Program.

A health care practitioner who has registered in the Medical Cannabis Registry does not prescribe medical cannabis. Their role in the program is to determine if a patient has a qualifying medical condition and certify the patient of that diagnosis as well as to maintain a treatment relationship with the patient.

The Office of Medical Cannabis (OMC) does not maintain or share with the public any list of practitioners who are participating in the program or provide any referral information to patients seeking a registered health care practitioner.

OMC contacts all health care practitioners who register with the Medical Cannabis Program to verify their identity. Health care practitioners are under no obligation to participate.

How to register

In order to participate, health care practitioners (defined as a Minnesota-licensed doctor of medicine, a Minnesota-licensed physician assistant acting within the scope of authorized practice, or a Minnesota-licensed advanced practice registered nurse who has primary responsibility for care and treatment of the patient's qualifying medical condition) must create an account in the [Medical Cannabis Registry \(https://cannabis.web.health.state.mn.us/enrollment/health-care-practitioner/enroll-health-care-practitioner.xhtml\)](https://cannabis.web.health.state.mn.us/enrollment/health-care-practitioner/enroll-health-care-practitioner.xhtml).

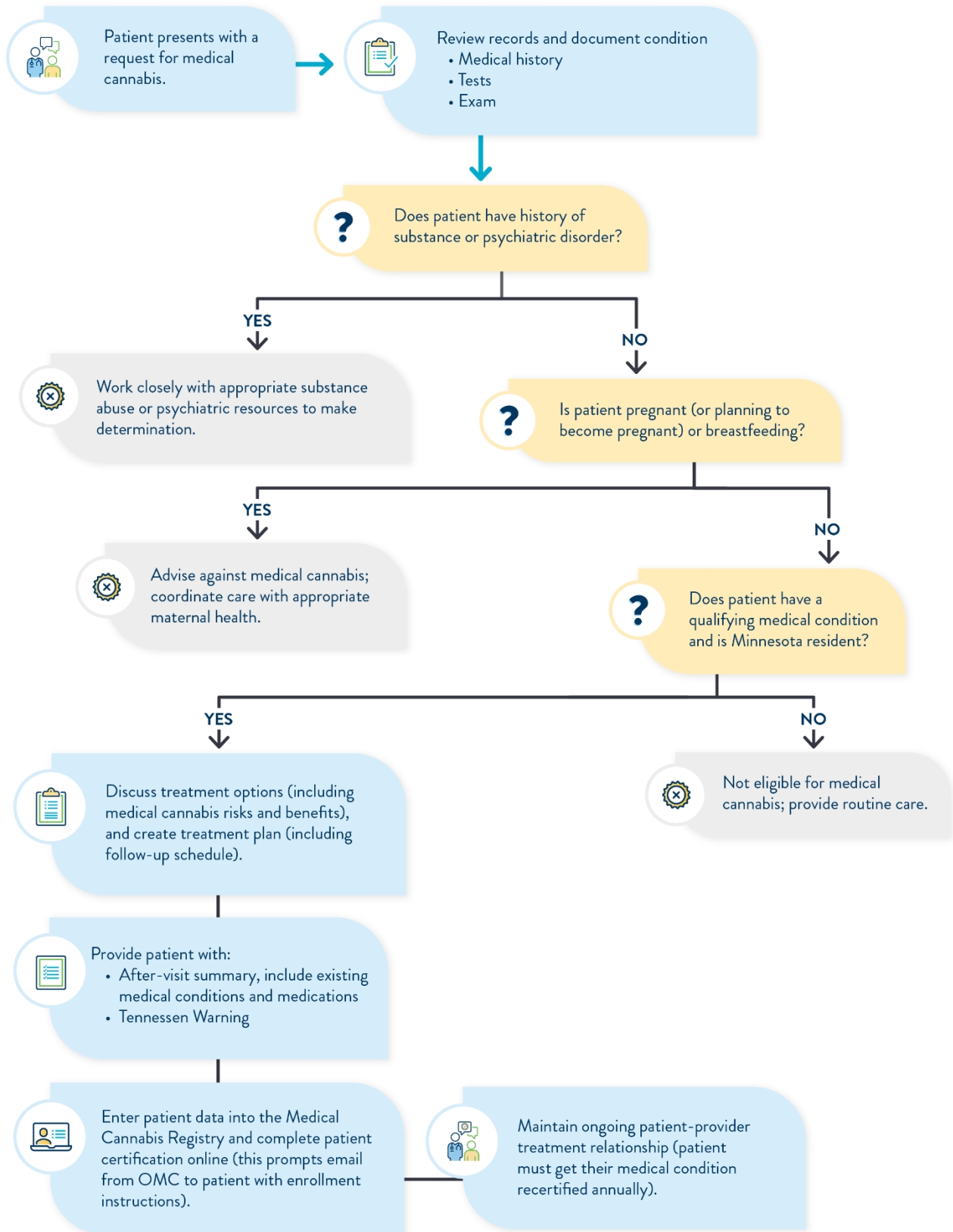
The following information is required:

- General practice information: name, address, email, and phone
- Medical license number
- DEA registration number

Patient Certification Decision Tree

This document includes a diagram (see next page) that outlines a process that participating health care practitioners may follow when certifying a patient, recognizing that deviations may occur depending on the individual patient.

HEALTH CARE PRACTITIONER GUIDANCE FOR MINNESOTA'S MEDICAL CANNABIS PROGRAM



Decision Tree Narrative

1. Patient presents with request for medical cannabis

2. Document condition: history, tests, exam

- Conduct a full assessment of the patient's history including the results of all diagnostic tests and examinations relating to the qualifying medical condition.
- Review records relating to the qualifying medical condition from other treating physicians from the previous 12 months.
- Assess the current medical condition including an in-person physical exam as appropriate to confirm the qualifying diagnosis (the initial visit to get certified must be done in person).

3. Does the patient have a history of substance abuse or psychiatric disorder?

- If no, proceed to next step.
- If yes, the health care practitioner should work closely with appropriate substance abuse or psychiatric resources to make determination.

4. Is patient pregnant (or planning to become pregnant) or breastfeeding?

- If no, proceed to next step.
- If yes, this patient may not be a candidate for medical cannabis due to the risk of additional harms. There is some evidence that use of cannabis while pregnant can cause harm to the developing fetus. Cannabis used by a person while breastfeeding transfers to the infant through the breast milk and could cause harm to the infant.

Resource

[Important information and warnings about using medical cannabis \(PDF\)
\(www.health.state.mn.us/people/cannabis/docs/patients/patientinfosheet.pdf\)](http://www.health.state.mn.us/people/cannabis/docs/patients/patientinfosheet.pdf)

5. Does the patient have a qualifying medical condition?

- If a patient does not have a qualifying medical condition and is not a Minnesota resident, they cannot be certified. The health care practitioner should consider routine care for the patient instead.
- If yes, proceed to the next step.

Resource

[Qualifying Medical Conditions
\(www.health.state.mn.us/people/cannabis/patients/conditions.html\)](http://www.health.state.mn.us/people/cannabis/patients/conditions.html)

6. Discuss treatment options, including medical cannabis risks and benefits, and create treatment plan

- Review with their patients what is known about the use of medical cannabis for the patient's condition, including expected benefits, possible harms, and interactions with other treatment(s).
- Patients should be aware about the limitations of use of medical cannabis in public places or on the job.
- Health care practitioners are under no obligation to certify a patient, even if they have a qualifying condition.
- In order to stay in the program, patients must be recertified after one year as part of their re-enrollment process.
- Health care practitioners must notify OMC within 14 calendar days of learning of the death of a registered patient whose medical condition they certified.

Resource

[Important information and warnings about using medical cannabis \(PDF\)
\(www.health.state.mn.us/people/cannabis/docs/patients/patientinfosheet.pdf\)](http://www.health.state.mn.us/people/cannabis/docs/patients/patientinfosheet.pdf)

7. Provide patient with after-visit summary and Tennesen Warning

- Provide patient documentation of any existing medical condition (apart from their qualifying medical condition) as well as current medications.

8. Enter patient data into Medical Cannabis Registry and complete patient certification online

This information is required:

- Patient's name
- Patient's email address
- Qualifying medical condition
- Date of certification visit

Health care practitioners who are providing ongoing care for patients enrolled in the Medical Cannabis Program agree to continue treatment for the patient's qualifying condition and report medical findings to the Commissioner of Health. This is to support the Commissioner's responsibility to conduct research and publish reports based on data from health records submitted to the Medical Cannabis Registry.

NOTE: Patients are required to complete enrollment within 90 days or they will be required to start the process over, including the visit to a health care practitioner to get certified.

9. Maintain ongoing patient treatment relationship

Health care practitioners should monitor for and report serious adverse reactions (any unexpected or harmful physical or psychological reaction that results in death, admission to a hospital, or requires medical treatment beyond first aid).

- Report life-threatening events, or death, within three days of the health care practitioner becoming aware of the event.
- Report non-life-threatening events within 14 days of the health care practitioner becoming aware of the event.

Resource

Serious Health Effect Reporting

(www.health.state.mn.us/people/cannabis/practitioners/healtheffect.html)

Additional Resources

- [Minnesota Statutes 152.28 Health Care Practitioner Duties \(www.revisor.mn.gov/statutes/cite/152.28\)](http://www.revisor.mn.gov/statutes/cite/152.28)
- [Brief Review of Human Studies Regarding Increased Risk of Harm with Cannabis Use \(PDF\) \(www.health.state.mn.us/people/cannabis/docs/practitioners/humanstudies.pdf\)](http://www.health.state.mn.us/people/cannabis/docs/practitioners/humanstudies.pdf)
- [A Review of Medical Cannabis Studies relating to Chemical Compositions and Dosages for Qualifying Medical Conditions \(PDF\) \(www.health.state.mn.us/people/cannabis/practitioners/docs/dosingreport.pdf\)](http://www.health.state.mn.us/people/cannabis/practitioners/docs/dosingreport.pdf)

Educational Materials

- [Patient Enrollment Process \(PDF\) \(www.health.state.mn.us/people/cannabis/materials/docs/patientprocess.pdf\)](http://www.health.state.mn.us/people/cannabis/materials/docs/patientprocess.pdf)
 - [Available in Hmong, Somali and Spanish \(www.health.state.mn.us/people/cannabis/materials/index.html#info\)](http://www.health.state.mn.us/people/cannabis/materials/index.html#info)
- [Caregiver Enrollment Process \(PDF\) \(www.health.state.mn.us/people/cannabis/materials/docs/caregiverprocess.pdf\)](http://www.health.state.mn.us/people/cannabis/materials/docs/caregiverprocess.pdf)
 - [Available in Hmong, Somali and Spanish \(www.health.state.mn.us/people/cannabis/materials/index.html#info\)](http://www.health.state.mn.us/people/cannabis/materials/index.html#info)
- [Health Care Practitioner Registration Process \(PDF\) \(www.health.state.mn.us/people/cannabis/materials/docs/healthcareprocess.pdf\)](http://www.health.state.mn.us/people/cannabis/materials/docs/healthcareprocess.pdf)
- [Minnesota's Medical Cannabis Program Patient Guide \(PDF\) \(www.health.state.mn.us/people/cannabis/materials/docs/patientguide.pdf\)](http://www.health.state.mn.us/people/cannabis/materials/docs/patientguide.pdf)
- [Minnesota's Medical Cannabis Program Caregiver Guide \(PDF\) \(www.health.state.mn.us/people/cannabis/materials/docs/caregiverguide.pdf\)](http://www.health.state.mn.us/people/cannabis/materials/docs/caregiverguide.pdf)
- [Order Medical Cannabis Brochures \(redcap.health.state.mn.us/redcap/surveys/?s=LTDXCCW8EP3AYTT3\).](http://redcap.health.state.mn.us/redcap/surveys/?s=LTDXCCW8EP3AYTT3)

Minnesota Department of Health
Office of Medical Cannabis
PO Box 64882
St. Paul, MN 55164-0882
651-201-5598
health.cannabis@state.mn.us
www.health.state.mn.us/medicalcannabis

1/19/2023

To obtain this information in a different format, call: 651-201-5598.