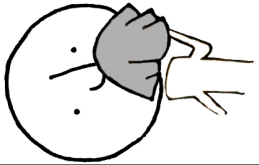
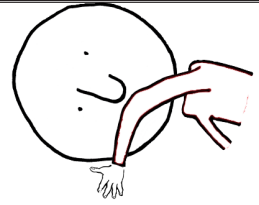


ធួនណាស្រ្ត្រីនៃធួន្រ្តនៃធួន



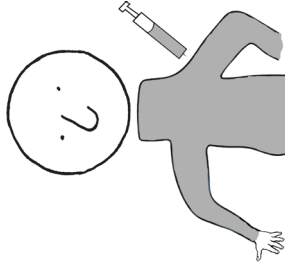
ពុំអមាត់របស់អ្នកនៅពេលក្អក!



ត្រូវលាងដៃរបស់អ្នក ។

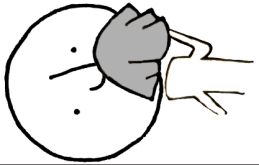


នៅផ្ទះ នៅពេលឈឺថ្នាត់ ។

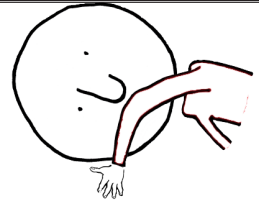


ត្រូវចាក់ថ្នាំបង្ការជំងឺ ។

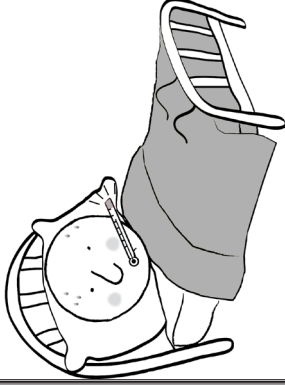
ធួនណាស្រ្ត្រីនៃធួន្រ្តនៃធួន



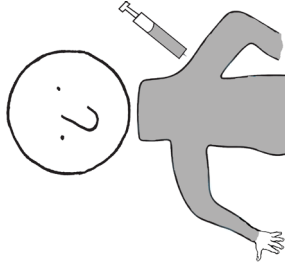
ពុំអមាត់របស់អ្នកនៅពេលក្អក!



ត្រូវលាងដៃរបស់អ្នក ។

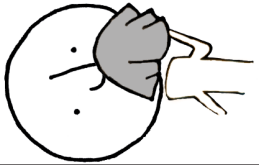


នៅផ្ទះ នៅពេលឈឺថ្នាត់ ។

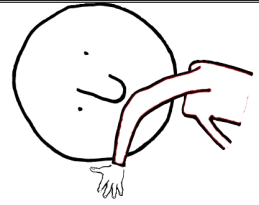


ត្រូវចាក់ថ្នាំបង្ការជំងឺ ។

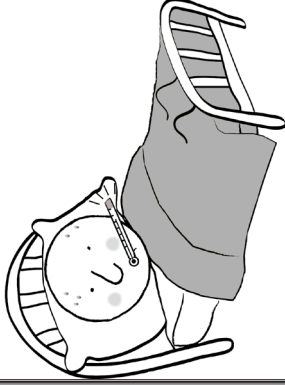
ធួនណាស្រ្ត្រីនៃធួន្រ្តនៃធួន



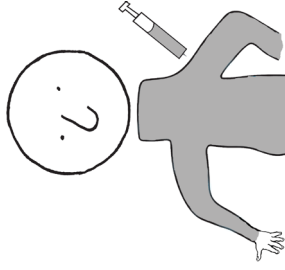
ពុំអមាត់របស់អ្នកនៅពេលក្អក!



ត្រូវលាងដៃរបស់អ្នក ។

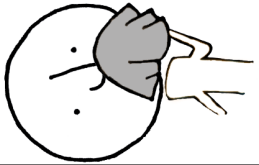


នៅផ្ទះ នៅពេលឈឺថ្នាត់ ។

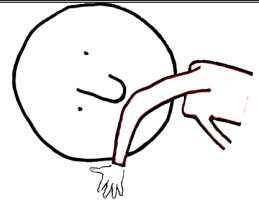


ត្រូវចាក់ថ្នាំបង្ការជំងឺ ។

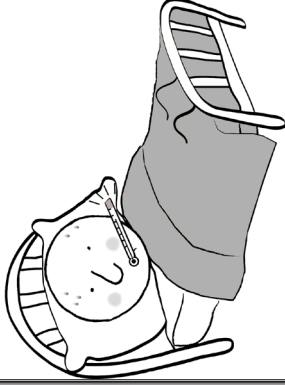
ធួនណាស្រ្ត្រីនៃធួន្រ្តនៃធួន



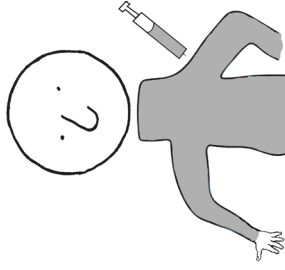
ពុំអមាត់របស់អ្នកនៅពេលក្អក!



ត្រូវលាងដៃរបស់អ្នក ។



នៅផ្ទះ នៅពេលឈឺថ្នាត់ ។



ត្រូវចាក់ថ្នាំបង្ការជំងឺ ។

FIGHT the FLU

ចូរតតាំងនឹងគ្រុនផ្តាសាយធំ

Questions about flu?

Minnesota Department
of Health

www.mdhflu.com

Centers for Disease Control

www.cdc.gov

1-800-CDC-INFO
(800-232-4636)

TTY: 1-888-232-6348

24 hours/every day

Your city or county public
health department

FIGHT the FLU

ចូរតតាំងនឹងគ្រុនផ្តាសាយធំ

Questions about flu?

Minnesota Department
of Health

www.mdhflu.com

Centers for Disease Control

www.cdc.gov

1-800-CDC-INFO
(800-232-4636)

TTY: 1-888-232-6348

24 hours/every day

Your city or county public
health department

FIGHT the FLU

ចូរតតាំងនឹងគ្រុនផ្តាសាយធំ

Questions about flu?

Minnesota Department
of Health

www.mdhflu.com

Centers for Disease Control

www.cdc.gov

1-800-CDC-INFO
(800-232-4636)

TTY: 1-888-232-6348

24 hours/every day

Your city or county public
health department

FIGHT the FLU

ចូរតតាំងនឹងគ្រុនផ្តាសាយធំ

Questions about flu?

Minnesota Department
of Health

www.mdhflu.com

Centers for Disease Control

www.cdc.gov

1-800-CDC-INFO
(800-232-4636)

TTY: 1-888-232-6348

24 hours/every day

Your city or county public
health department