



Environmental Health Division
Minnesota Department of Health

Tom Hogan
Division Director

Water Policy Center

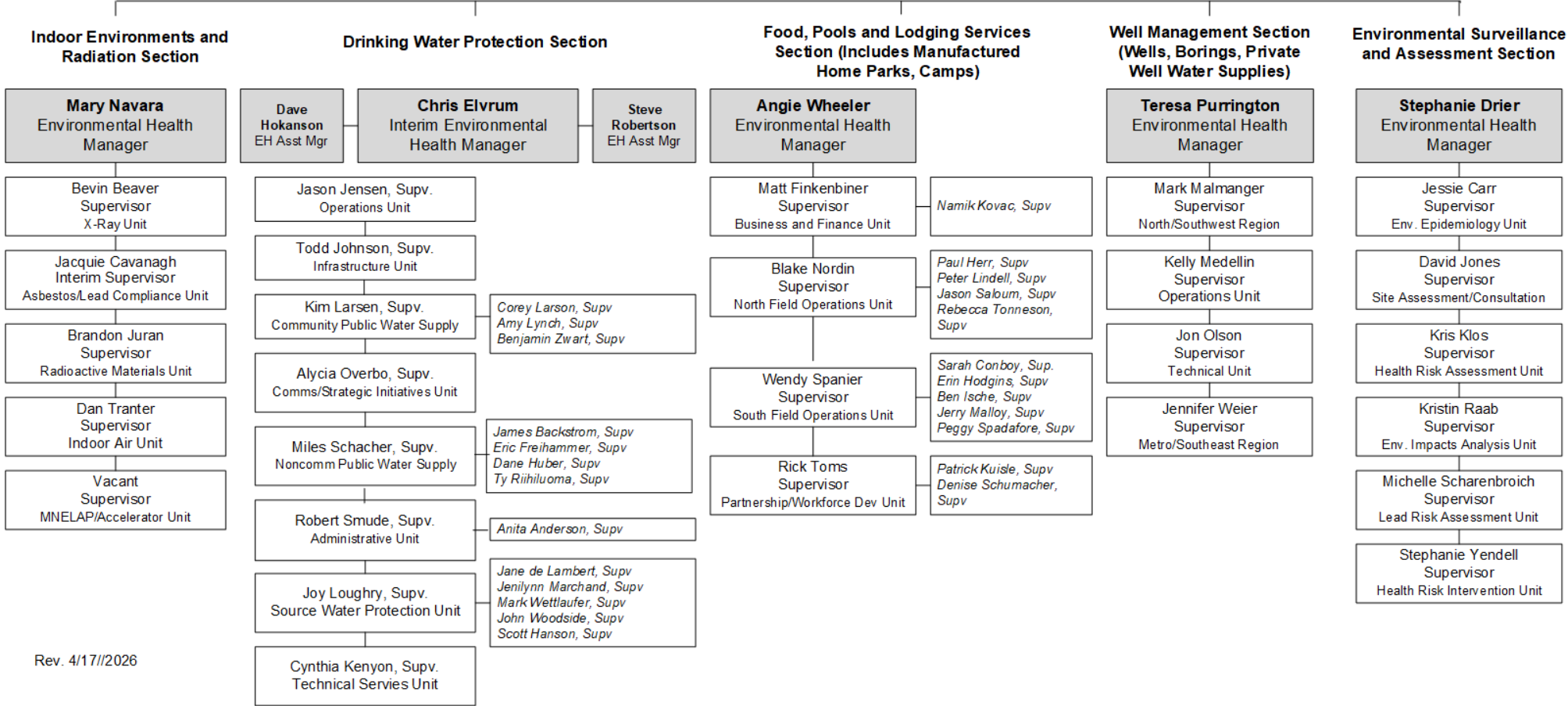
Tannie Eshenaur
Water Policy Manager

Tom Higgins
Assistant Division Director

Vacant
Assistant Division Director

EH Operations Center

Tom Higgins
Interim EH Operations and Quality Manager



Environmental Health Division Organizational Chart

This is the organizational chart for the Environmental Health Division leadership in the Minnesota Department of Health.

Director's Office

Tom Hogan is the Division Director. Five section managers and the Water Policy Center manager report directly to Tom Hogan. Tom Higgins is an Assistant Division Director and manages the EH Operations Center. The second Assistant Division Director position is vacant.

Drinking Water Protection Section

Chris Elvrum, Interim Environmental Health Manager, supervises the Drinking Water Protection Section. Dave Hokanson and Steve Robertson are the Assistant Environmental Health Managers. Seven-unit supervisors report directly to them.

1. Jason Jensen, Supervisor, Operations Unit
2. Todd Johnson, Supervisor, Infrastructure Unit
3. Kim Larsen, Supervisor, Community Public Water Supply Unit, supervises three program supervisors:
 - Corey Larson, Supervisor
 - Amy Lynch, Supervisor
 - Benjamin Zwart, Supervisor
4. Alycia Overbo, Supervisor, Communications and Strategic Initiatives Unit
5. Miles Schacher, Supervisor, Noncommunity Public Water Supply Unit, supervises five program supervisors:
 - James Backstrom, Supervisor
 - Eric Freihammer, Supervisor
 - Dane Huber, Supervisor
 - Ty Riihiluoma, Supervisor
6. Robert Smude, Supervisor, Administrative Unit
 - Anita Anderson, Supervisor
7. Joy Loughry, Supervisor, Source Water Protection Unit, supervises five program supervisors:
 - Jane de Lambert, Supervisor
 - Jenilynn Marchand, Supervisor
 - Mark Wettlaufer, Supervisor
 - John Woodside, Supervisor
 - Scott Hanson, Supervisor

8. Cynthia Kenyon, Supervisor, Technical Services Unit

EH Operations Center

Tom Higgins, Assistant Division Director, supervises the EH Operations Center.

Environmental Surveillance and Assessment Section

Stephanie Drier, Environmental Health Manager, supervises the Environmental Surveillance and Assessment Section. Six-unit supervisors report directly to the section manager.

1. Jessie Carr, Supervisor, Environmental Epidemiology Unit
2. David Jones, Supervisor, Site Assessment and Consultation Unit
3. Kris Klos, Supervisor, Health Risk Assessment Unit
4. Kristin Raab, Supervisor, Environmental Impact Analysis Unit
5. Michelle Scharenbroich, Supervisor, Lead Risk Assessment Unit
6. Stephanie Yendell, Supervisor, Health Risk Intervention Unit

Food, Pools and Lodging Services Section (includes Manufactured Home Parks, Camps)

Angie Wheeler, Environmental Health Manager, supervises the Food, Pools and Lodging Services Section (includes Manufactured Home Parks, Camps). Four-unit supervisors report directly to the section manager.

1. Matt Finkenbiner, Supervisor, Business and Finance Unit supervises one program supervisor:
 - Namik Kovac, Supervisor
2. Blake Nordin, Supervisor, North Field Operations, supervises four program supervisors:
 - Peter Lindell, Supervisor
 - Paul Herr, Supervisor
 - Jason Saloum, Supervisor
 - Rebecca Tonneson, Supervisor
3. Wendy Spanier, Supervisor, South Field Operations, supervises five program supervisors:
 - Sarah Conboy, Supervisor
 - Erin Hodgins, Supervisor
 - Ben Ische, Supervisor
 - Jerry Malloy, Supervisor
 - Peggy Spadafore, Supervisor
4. Rick Toms, Supervisor, Partnership and Workforce Development Unit supervises one program supervisor:
 - Patrick Kuisle, Supervisor
 - Denise Schumacher, Supervisor

Indoor Environments and Radiation Section

Mary Navara, Environmental Health Manager, supervises the Indoor Environments and Radiation Section. Five-unit supervisors report directly to the section manager.

1. Bevin Beaver, Supervisor, X-Ray Unit
2. Jacquie Cavanagh, Interim Supervisor, Asbestos and Lead Compliance Unit
3. Brandon Juran, Supervisor, Radioactive Materials Unit
4. Dan Tranter, Supervisor, Indoor Air Unit
5. Vacant, Supervisor, MNELAP/Accelerator Unit

Water Policy Center

Tannie Eshenaur, Water Policy Manager, supervises the Water Policy Center.

Well Management Section (wells, borings, private well water supplies)

Teresa Purrington, Environmental Health Manager, supervises the Well Management Section. Two-unit supervisors and two regional supervisors report directly to the section manager.

1. Mark Malmanger, Supervisor, North/Southwest Region
2. Kelly Medellin, Supervisor, Operations Unit
3. Jon Olson, Supervisor, Technical Unit
4. Jennifer Weier, Supervisor, Metro/Southeast Region

Minnesota Department of Health
Environmental Health Division
PO Box 64975
St. Paul, MN 55164-0975
651-201-4571
www.health.state.mn.us

Rev. 4/17/2026

To obtain this information in a different format, call: 651-201-4500.