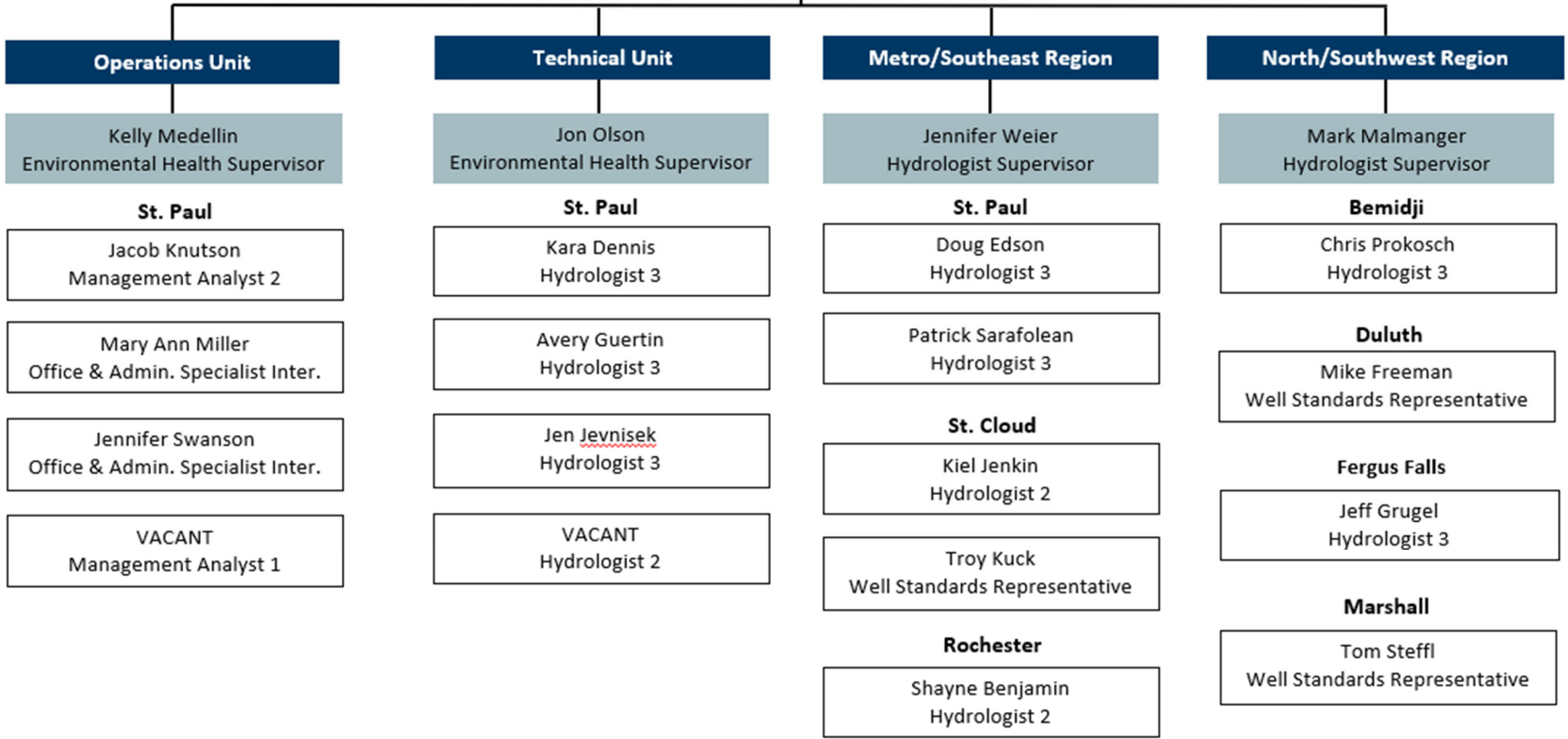


**Well Management Section**  
Minnesota Department of Health  
Environmental Health Division

**Teresa Purrington**  
Environmental Health Manager



# Well Management Section

## Organizational Chart

This is the org chart for the Well Management Section in the Environmental Health Division of the Minnesota Department of Health.

### Manager's Office

Teresa Purrington is the Environmental Health Manager with four-unit supervisors directly reporting to her.

### Operations Unit

The Operations Unit is in the St. Paul Office and supervised by Kelly Medellin, Environmental Health Supervisor. Four staff report directly to Kelly.

- Jacob Knutson, Management Analyst 2
- Mary Ann Miller, Office & Administrative Specialist Intermediate
- Jennifer Swanson, Office & Administrative Specialist Intermediate
- VACANT, Management Analyst 1

### Technical Unit

The Technical Unit is in the St. Paul Office and supervised by Jon Olson, Environmental Health Supervisor. Four staff report directly to Jon.

- Kara Dennis, Hydrologist 3
- Avery Guertin, Hydrologist 3
- Jennifer Jevnisek, Hydrologist 3
- VACANT, Hydrologist 2

### Metro/Southeast Region

The Metro/Southeast Region is in St. Paul, Rochester, and St. Cloud Offices and supervised by Jennifer Weier, Hydrologist Supervisor. Five staff report directly to Jennifer.

- Doug Edson, Hydrologist 3, St. Paul
- Patrick Sarafolean, Hydrologist 3, St. Paul
- Kiel Jenkin, Hydrologist 2, St. Cloud
- Shayne Benjamin, Hydrologist 2, Rochester
- Troy Kuck, Well Standards Representative, St. Cloud

## WELL MANAGEMENT SECTION ORGANIZATIONAL CHART

### North/Southwest Region

The North/Southwest Region is in Bemidji, Duluth, and Fergus Falls Offices and supervised by Mark Malmanger, Hydrologist Supervisor. Four staff report directly to Mark.

- Jeff Grugel, Hydrologist 3, Fergus Falls
- Chris Prokosch, Hydrologist 3, Bemidji
- Mike Freeman, Well Standards Representative, Duluth
- Tom Steffl, Well Standards Representative, Marshall

Minnesota Department of Health  
Environmental Health Division  
P.O. Box 64975  
St. Paul, MN 55164-0975  
651-201-4571

10/02/2025R