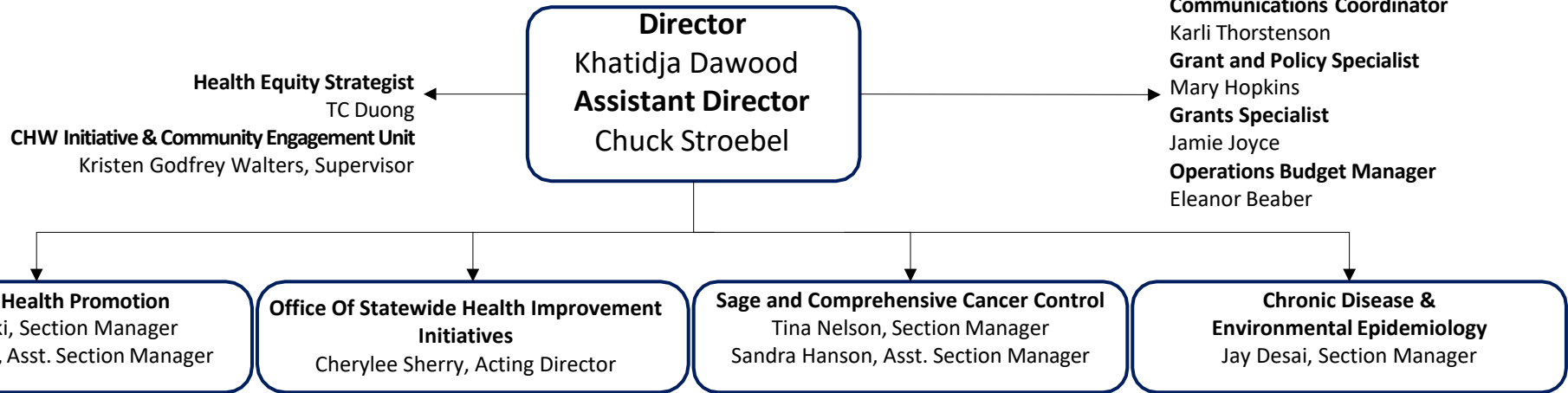




Health Promotion and Chronic Disease Division



Oral Health
Prasida Khanal, Supervisor

Cardiovascular Health and Stroke
Jim Peacock, Unit Supervisor
Nicky Anderson, Health Systems Supervisor

Diabetes, Arthritis and Health Behavior
Bridget Ideker, Supervisor

Aging and Healthy Communities
Patty Takawira, Supervisor

Asthma and Respiratory Health
Andrea Hickle, Supervisor

Thriving Communities
Cherylee Sherry, Population Health Systems Manager

Community Initiatives
Fred Ndip, Supervisor

Evaluation and Surveillance
Kathryn Knoff, Supervisor

American Indian Community Initiatives
Jacob Walker-Swaney, Supervisor

Operations and Budget Support
Sandra Hanson, Manager
Xeng Khang, Lead Worker

Clinic Services, Recruitment, and Communications
Tina Nelson, Manager

Data and Evaluation
Tina Nelson, Manager

Cancer Planning and Partnerships
Michelle Brasure, Supervisor

Navigation Call Center
Manjusha Pillai, Supervisor

SagePlus
Manjusha Pillai, Supervisor

Finance and Budget Support
Sarah Diaz, Lead Worker

Minnesota Cancer Reporting System (MCRS) Field Service
Mona Highsmith, Supervisor

Data Analysis and Reporting
Vacant, Supervisor

Data Management
Tom Coles, Supervisor

Sickle Cell Data Collection
Jay Desai, Manager

Long Covid Program
Kate Murray, Supervisor

Health Promotion and Chronic Disease Division Organizational Chart

This is the organizational chart for the Health Promotion and Chronic Disease Division leadership of the Minnesota Department of Health.

Director's Office

Khatidja Dawood is the Division Director, and Chuck Stroebel is the Assistant Division Director, with four Section Managers reporting directly to them. Communications Coordinator Karli Thorstenson, Grants Specialist Jamie Joyce, Projects and Policy Specialist Mary Hopkins, and Administrative Support Staff Kathy Harris, report directly to the Assistant Division Director. Additionally, Eleanor Beaber, Operations Budget Manager supports the Director's Office. The Community Health Worker (CHW) Training Program staff report directly to the Division Director. Kristin Godfrey Walters is the supervisor for the CHW Initiative and Community Engagement Unit. Kelly Lanigan is a management analyst who provides accessibility, budget, and SharePoint support.

Center for Health Promotion

Ann Zukoski is the Director for the Center for Health Promotion, and Eleanor Beaber is the Assistant Section Manager. Six unit supervisors report directly to Ann Zukoski:

1. Prasida Khanal, Supervisor of the Oral Health Unit
2. Jim Peacock, Supervisor of the Cardiovascular Health and Stroke Unit
3. Nicky Anderson, Supervisor of the Health Systems Unit
4. Bridget Ideker, Supervisor of the Diabetes, Arthritis and Health Behavior Unit
5. Patty Takawira, Supervisor of the Aging and Healthy Communities Unit
6. Andrea Hickle, Supervisor of the Asthma and Respiratory Health Unit

Office Of Statewide Health Improvement Initiatives

Cherylee Sherry is the Acting Director of the Office of Statewide Health Improvement Initiatives. Cherylee Sherry manages the Population Health Unit. Fred Ndip, Supervisor for Community Initiatives Unit reports to Cherylee Sherry. Two other supervisors report directly to Cherylee Sherry, Acting Director.

1. Jacob Walker-Swaney, Supervisor of the American Indian Community Initiatives Unit
2. Kathryn Knoff, Supervisor of the Evaluation and Surveillance Unit

Cancer Control and Prevention/Sage Programs Section

Tina Nelson, Section Manager, manages the Cancer Control and Prevention/Sage Programs Section. The Assistant Section Manager, Sandra Hanson, oversees operations. Three supervisors report directly to Tina:

1. Vacant, Supervisor of the Data and Evaluation Unit
2. Michelle Brasure, Supervisor of the Comprehensive Cancer Control Unit
3. Manjusha Pillai, Supervisor of the Navigation Call Center Unit, and SagePlus Program

Chronic Disease and Environmental Epidemiology Section

Jay Desai, Section Manager, supervises the Chronic Disease and Environmental Epidemiology Section. Four supervisors report directly to him:

The Minnesota Cancer Reporting System has three unit supervisors reporting to Jay Desai:

1. Mona Highsmith, Supervisor of the Field Service Unit
2. Vacant, Supervisor of the Data Analysis Unit
3. Tom Coles, Supervisor of the Data Management Unit

In addition, Kate Murray, serves as the supervisor of the Long-COVID Unit

This section also supports data and programmatic work-related sickle cell data collection.

Sarah Diaz provides support for operations and finance for this section.

Minnesota Department of Health
Health Promotion and Chronic Disease Division
PO Box 64975
St. Paul, MN 55164-0975
651-201-3600

www.health.state.mn.us

May 12, 2026

To obtain this information in a different format, call: 651-201-3600.