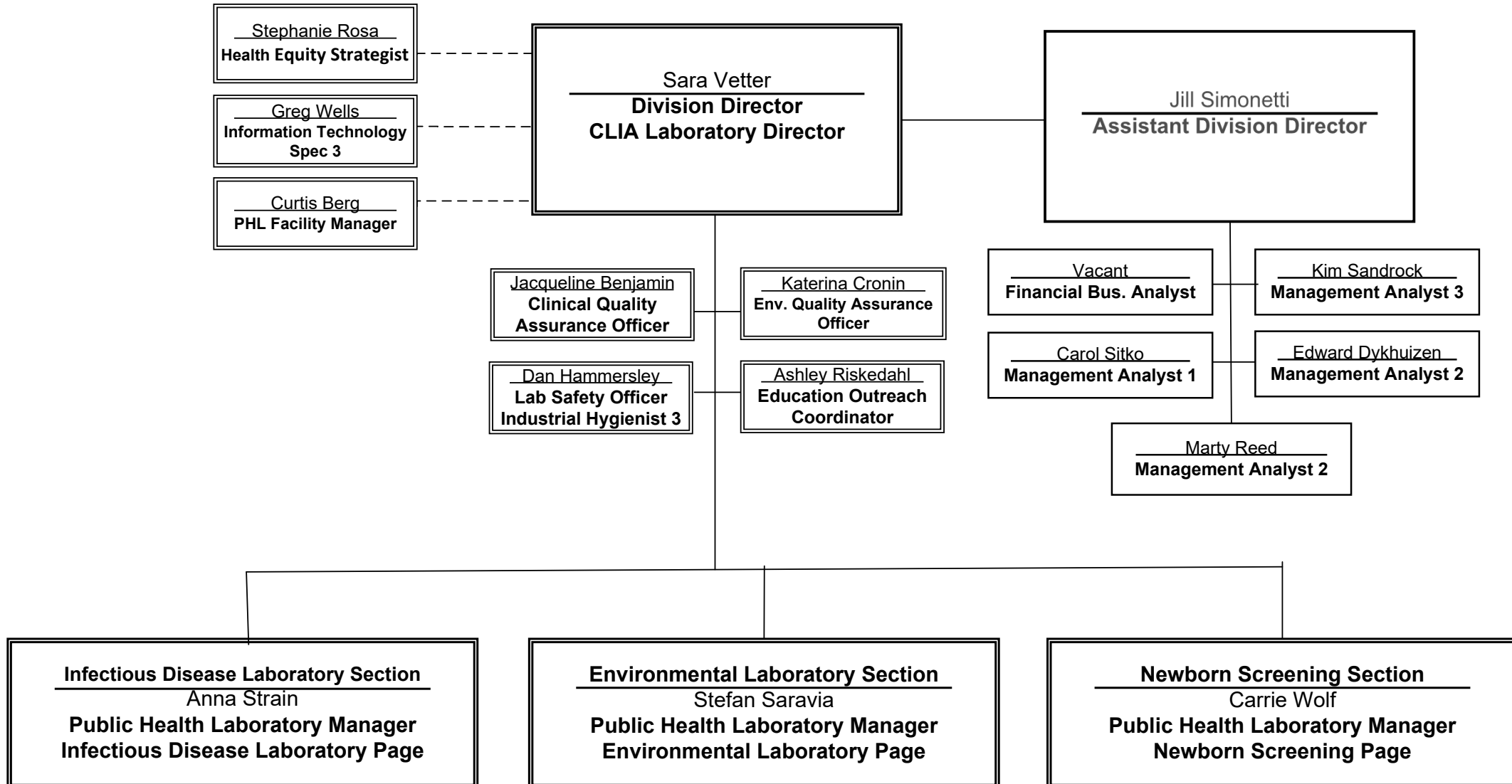
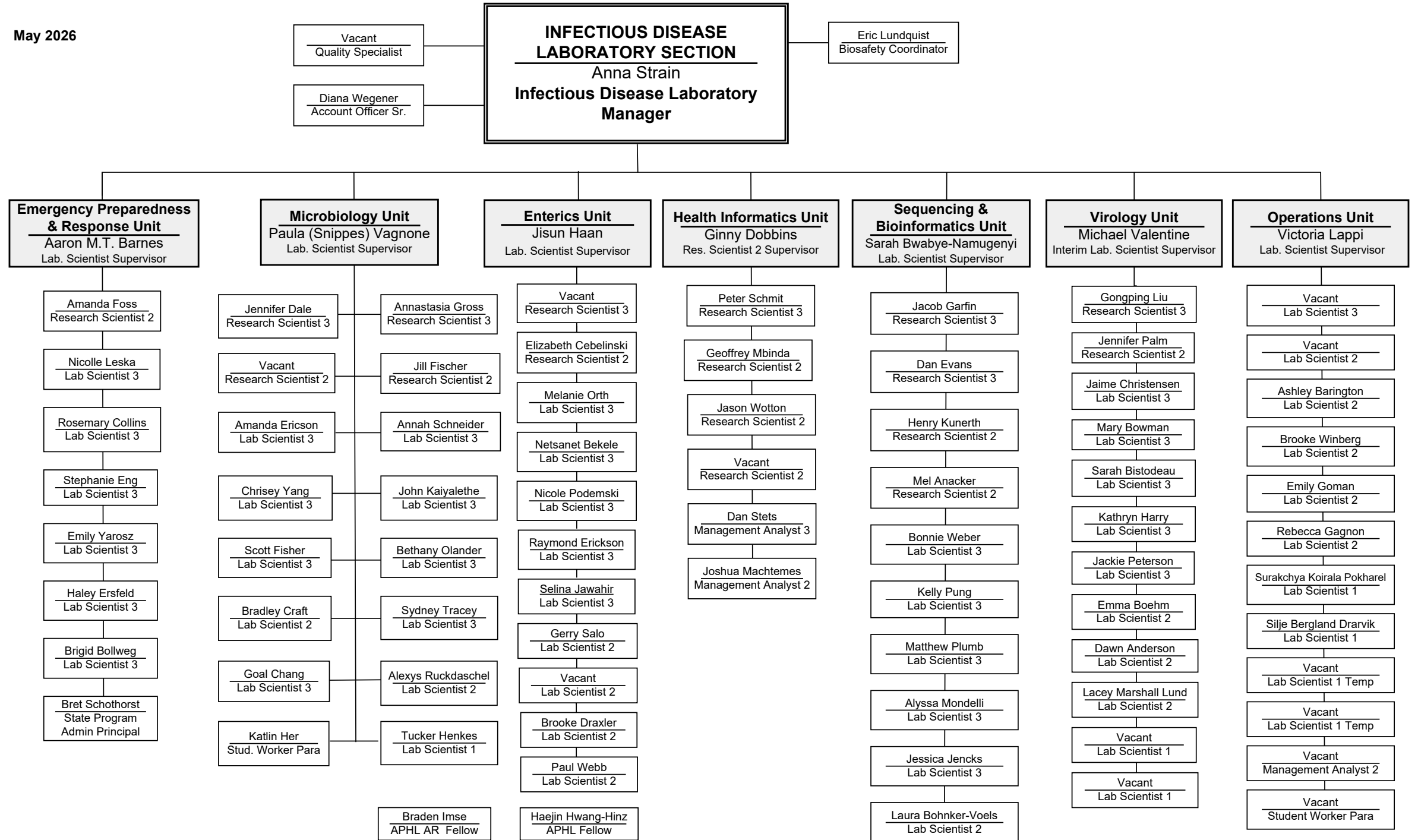


Minnesota Department of Health Public Health Laboratory Division

May 2026





May 2026

ENVIRONMENTAL LABORATORY SECTION
Stefan Saravia
Environmental Laboratory Manager

Data Quality Unit
John Manske
Lab. Scientist Supervisor

Laura Toohy
Data Review

Casie Schulze
Data Review

Alexandra Calametti
Data Review

Jenelle Duvio-Kirk
Data Review

Jaime Mayer
Data Review

Chang Barich
Data Review

Sample Receiving Unit
Mark Lunda
Lab. Scientist Supervisor

Operations Unit
Cori Dahle
Health Program Rep.
Principal Supervisor

Metals & Radiochemistry Unit
Danielle Timp
Research Scientist 2 Supervisor

Inorganic Chem. & Env. Micro Unit *
Jeffrey Brenner
Lab. Scientist Supervisor

Organic Chemistry Unit
Keeli Ott
Lab. Scientist Supervisor

Emerging Contaminants Unit
Shane Olund
Research Scientist 2
Supervisor

Chemical Threats & Biomonitoring Unit
Jason Peterson
Research Scientist 2 Supervisor

Kara Sticht
Lab Scientist 1

Kaylene Nelson
Lab Scientist 1

Michael Juaire
Customer Serv. Spec. Sr.

Jessica Gravelle
Lab Technician

Lindsay Bayerkohler
Lab Technician

Daniel Macapagal
Lab Technician

Danielle Pereyra
Lab Technician

Chelsea Sobtzak
Lab Technician

Madelyn Ritter
Lab Technician

Vacant
Student Worker Para

Angela Annen
Research Scientist 3

Colin Schuft
Lab Scientist 2

Colleen Sylvester
Lab Scientist 2

Carin Navratil
Lab Scientist 2

Mike Smith
Lab Scientist 2

Jesse Fillmore
Research Scientist 3

Lisa Strong
Research Scientist 3

Stephanie Peterson
Lab Scientist 3

Mark Kanow
Lab Scientist 3

Robert Class
Lab Scientist 2

Nathaniel Nelson
Lab Scientist 2

Michael Murphy
Lab Scientist 2

Daniel Masanz
Lab Scientist 2

Vacant
Lab Scientist 1

Desiree Reding
Research Scientist 1

Elisabeth Dankert
Lab Scientist 3

Nicole Trifilette
Lab Scientist 3

Natalie Moses
Lab Scientist 1

Caitlin Schulz
Lab Scientist 1

Hannah Wood
Lab Scientist 1

Kelsey Prickett
Lab Scientist 1

Angelica Stanley
Research Scientist 2

Hannah Pilch
Lab Scientist 3

Irina Barry
Lab Scientist 2

Christopher Brezina
Lab Scientist 1

Jose Nava Olivas
Lab Scientist 1

Clara Danielson
Lab Scientist 1

Michael Sumej
Lab Scientist 3

Vacant
Lab Scientist 3

James Ng
Lab Scientist 2

Josiah Hakala
Lab Scientist 2

Eve Zabronsky
Lab Scientist 2

Vacant
Lab Scientist 2

Patrick Mannix
Lab Scientist 2

Conor McLain
Lab Scientist 1

Aled Hertel
Lab Technician

Eric Brown
Lab Technician

Matt Wogen
Research Scientist 3

Marla DeVault
Research Scientist 2

Johanna Jernberg
Research Scientist 2

Nathan Ferrey
Research Scientist 2

Andrew Mittendorff
Lab Scientist 3

Austin Allen
Lab Scientist 2

Michael Merrick
Lab Scientist 2

Zach Dodson
Lab Scientist 2

Shelby Stark
Lab Scientist 2

Katherine Schlasner
Lab Scientist 2

Martin Bevan
Research Scientist 3

Carin Huset
Research Scientist 3

Kitrina Barry
Research Scientist 3

Breahna Giles
Research Scientist 2

Tim Richmond
Research Scientist 2

Joshua Carver
Research Scientist 2

Cullen Cunningham
Research Scientist 2

Vacant
Research Scientist 2

Paul Fiesel
Research Scientist 2

Rachael Reichow
Research Scientist 2

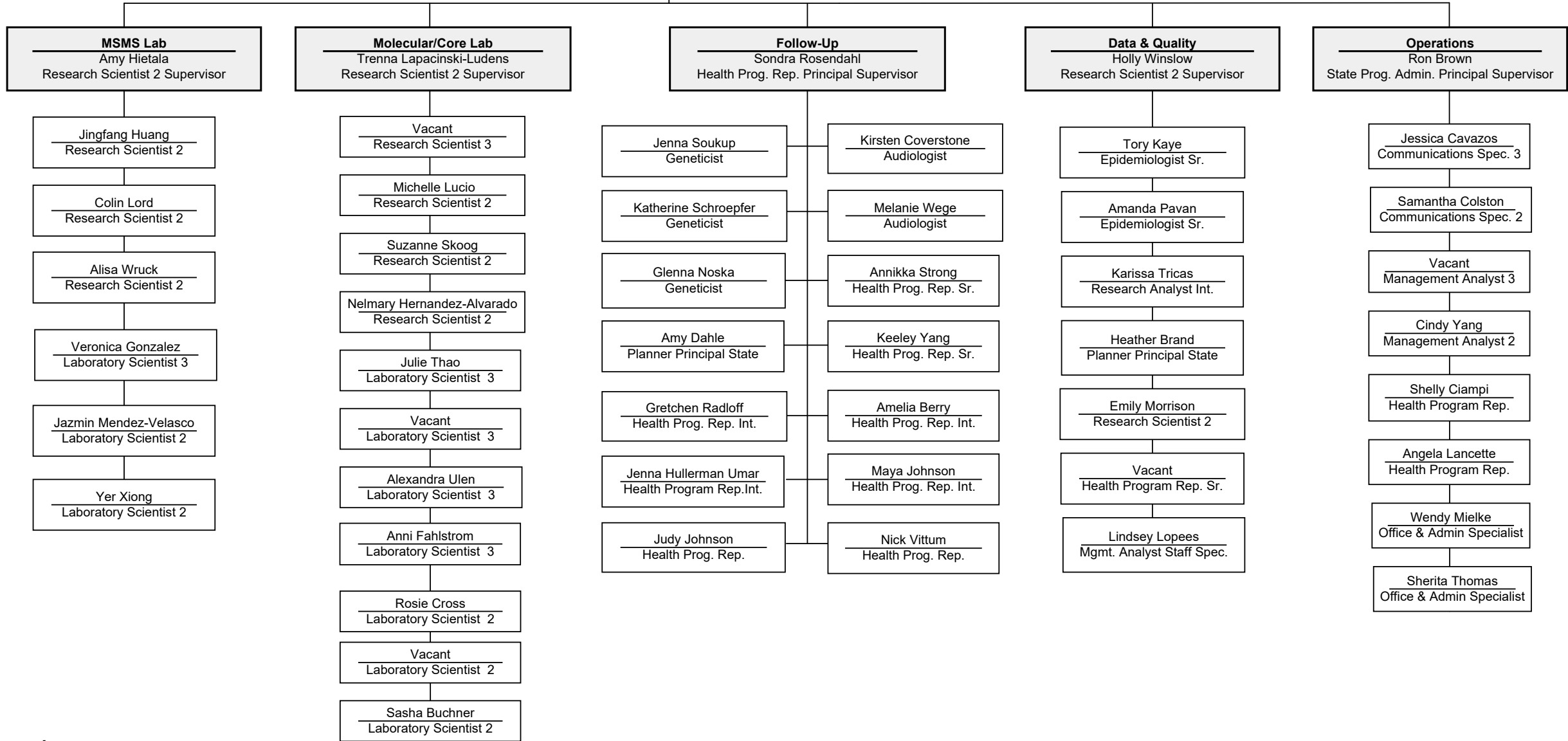
Emily Stoltz
Research Scientist 1

Caitlyn Almberg
Research Scientist 1

* Inorganic Chemistry and Environmental Microbiology Unit

May 2026

NEWBORN SCREENING SECTION
Carrie Wolf
Newborn Screening Manager



Public Health Laboratory Division Organizational Chart

This is the text version of the Division organizational chart for the Public Health Laboratory of the Minnesota Department of Health.

Director's Office:

Sara Vetter is the Division Director and CLIA Laboratory Director. The Section Managers, Carrie Wolf, Newborn Screening Section Manager; Stefan Saravia, Environmental Laboratory Section; Anna Strain, Infectious Disease Laboratory Section; Dan Hammersley, Lab Safety Officer (Industrial Hygienist 3); Katerina Cronin, Environmental Laboratory Quality Assurance Officer; Jaqueline Benjamin, Clinical Laboratory Quality Assurance Officer; Ashley Riskedahl, Education Outreach Coordinator; and Jill Simonetti, Assistant Division Director; report to the Director. Stephanie Rosa, Health Equity Specialist, reports to the Office of Health Equity. Greg Wells, Information Technology Specialist 3; reports to MNIT. Curtis Berg, PHL Facility Manager, reports to MDH Facilities Management. Jill Simonetti is the Assistant Division Director. Vacant, Financial Business Analyst; Kim Sandrock, Management Analyst 3; Edward Dykhuizen, Management Analyst 2; Marty Reed, Management Analyst 2; and Carol Sitko, Management Analyst 1; report directly to the Assistant Division Director.

Infectious Disease Laboratory Section:

Anna Strain is the Infectious Disease Laboratory Section Manager: Vacant; Program Administrator Principal; Dianna Wegener, Account Officer Senior; and Eric Lundquist, Biosafety Coordinator; report directly to the Infectious Disease Laboratory Manager. The seven Unit Supervisors listed below; also report directly to the Infectious Disease Manager:

- Michael Valentine, Lab. Scientist Supervisor, Immunology and Virology Unit: Gongping Liu, Research Scientist 3; Jennifer Palm, Research Scientist 2; Sarah Bistodeau, Lab. Scientist 3; Jamie Christensen, Lab. Scientist 3; Kathryn Harry, Lab. Scientist 3; Mary Bowman, Lab. Scientist 3; Jackie Peterson, Lab. Scientist 3; Dawn Anderson, Lab. Scientist 2, Lacey Marshall Lund, Lab. Scientist 2; Emma Boehm, Lab. Scientist 2; and Vacant, Lab. Scientist 1.
- Victoria Lappi, Lab. Scientist Supervisor, Infectious Disease Operations Unit: Vacant, Lab. Scientist 3; Vacant, Lab. Scientist 2; Brooke Winberg, Lab. Scientist 2; Rebecca Gagnon, Lab. Scientist 2; Ashley Barington, Lab. Scientist 2; Emily Goman, Lab. Scientist 2; Surakchya Koirala Pokharel, Lab. Scientist 1; Silje Bergland Drarvik, Lab. Scientist 1; Vacant, Lab. Scientist 1 Temp; Vacant, Lab. Scientist 1 Temp.; Vacant, Management Analyst 2; Vacant, Student Worker Para..
- Jisun Haan, Lab. Scientist Supervisor, Enterics Unit: Vacant, Research Scientist 3; Elizabeth Cebelinski, Research Scientist 2; Melanie Orth, Lab. Scientist 3; Netsanet Bekele, Lab. Scientist 3; Nicole Podemski, Lab. Scientist 3; Raymond Erickson, Lab. Scientist 3; Selina Jawahir, Lab. Scientist 3; Geri Salo, Lab. Scientist 2; Paul Webb, Lab. Scientist 2; Brooke Draxler, Lab. Scientist 2; Vacant, Lab. Scientist 2; and Haejin Hwang-Hinz, APHL Bioinformatics Fellow.

- Aaron M.T. Barnes, Lab. Scientist Supervisor, Emergency Preparedness and Response Unit: Brigid Bollweg, Lab. Scientist 3; Stephanie Eng, Lab. Scientist 3; Emily Yarosz, Lab. Scientist 3; Nicolle Leska, Lab. Scientist 3; Rosemary Collins, Lab. Scientist 3; Haley Ersfeld, Lab. Scientist 3; Amanda Foss, Lab. Scientist 2; and Bret Schothorst, State Program Administrator Principal.
- Ginny Dobbins, Research Scientist 2 Supervisor, Health Informatics Unit: Peter Schmit, Research Scientist 3; Geoffrey Mbinda, Research Scientist 2; Jason Wotton, Research Scientist 2; Vacant, Research Scientist 2; Dan Stets; Management Analyst 3; Joshua Machtemes, Management Analyst 2.
- Paula Snippes Vagnone, Lab. Scientist Supervisor, Microbiology Unit: Jennifer Dale, Research Scientist 3; Anastasia Gross, Research Scientist 2; Vacant, Research Scientist 2; Jill; Fischer, Research Scientist 2; Annah Schneider, Lab. Scientist 3; Chrissy Yang, Lab. Scientist 3; Scott Fisher, Lab. Scientist 3; John Kaiyalethe, Lab. Scientist 3; Bonnie Weber, Lab. Scientist 3; Bethany Olander, Lab. Scientist 3; Amanda Ericson, Lab. Scientist 3; Sydney Tracey, Lab. Scientist 3; Goal Chang, Lab. Scientist 3, Alexys Ruckdaschel, Lab. Scientist 2; Bradley Craft, Lab. Scientist 2; Tucker Henkes, Lab. Scientist 1; Katlin Her, Student Worker Para; and Braden Imse, APHL AR Fellow.
- Sarah Bwabye Namugenyi, Lab. Scientist Supervisor, Sequencing and Bioinformatics Unit: Dan Evans, Research Scientist 3; Jacob Garfin, Research Scientist 3; Henry Kunerth, Research Scientist 2; Mel Anacker, Research Scientist 2; Matthew Plumb, Lab. Scientist 3; Kelly Pung, Lab. Scientist 3; Alyssa Mondelli, Lab. Scientist 3; Jessica Jencks, Lab. Scientist 3; and Laura Bohnker-Voels, Lab. Scientist 2.

Environmental Laboratory Section:

Stefan Saravia is the Environmental Laboratory Section Manager: Eight Unit Supervisors listed below report directly to the Environmental Laboratory Manager:

- John Manske, Supervisor, Data Quality Unit: Laura Toohey, Data Review; Jenelle Duvio-Kirk, Data Review; Jaime Mayer, Data Review; Casie Schulze, Data Review; Alexandra Calametti, Data Review; and Chang Barich, Data Review.
- Keeli Ott, Lab, Scientist Supervisor, Organic Chemistry Unit: Michael Sumey, Lab. Scientist 3; Vacant, Lab. Scientist 3; James Ng, Lab. Scientist 2; Eve Zabronsky, Lab. Scientist 2; Vacant, Lab. Scientist 2; Josiah Hakala, Lab. Scientist 2; Patrick Mannix, Lab. Scientist 2; Conor McLain, Lab. Scientist 1: Aled Hertel, Lab. Technician; and Eric Brown, Lab. Technician.
- Cori Dahle, Health Program Rep. Principal Supervisor, Environmental Laboratory Operations Unit: Angie Annen, Research Scientist 3; Colin Schuft, Lab. Scientist 2; Carin Navratil, Lab. Scientist 2; Colleen Sylvester, Lab. Scientist 2; and Mike Smith, Lab. Scientist 2.
- Danielle Timp, Research Scientist 2, Supervisor, Metals and Radiochemistry Unit: Jesse Fillmore, Research Scientist 3; Lisa Strong, Research Scientist 3; Stephanie Peterson, Lab. Scientist 3; Mark Kanow, Lab. Scientist 3; Robert Class, Lab. Scientist 2; Nathaniel Nelson, Lab. Scientist 2; Michael Murphy, Lab. Scientist 2; Daniel Masanz, Lab. Scientist 2; and Vacant, Lab. Scientist 1.
- Jeffrey Brenner, Lab. Scientist Supervisor, Inorganic Chemistry and Environmental Microbiology Unit: Angellica Stanley, Research Scientist 2; Desiree Reding, Research Scientist 1; Elisabeth Dankert, Lab. Scientist 3; Nicole Triffilette, Lab. Scientist 3; Hannah Pilch, Lab. Scientist 3; Irina Barry, Lab. Scientist 2; Natalie Moses, Lab. Scientist 1, Vacant, Lab. Scientist 1; Caitlin Schulz, Lab. Scientist 1; Jose Nava Olivas, Lab. Scientist 1, Christopher Brezina, Lab. Scientist 1; Hannah Wood, Lab Scientist 1; Clara Danielson, Lab. Scientist 1; and Kelsey Prickett, Lab. Scientist 1.
- Mark Lunda, Lab. Scientist Supervisor, Environmental Sample Receiving Unit: Kaylene Nelson, Lab. Scientist 1; Kara Sticht, Lab. Scientist 1; Michael Juaire, Customer Service Specialist Senior; Jessica Gravelle, Lab Technician; Madelyn Ritter, Lab. Technician; Daniel Macapagal, Lab. Technician; Lindsay Bayerkohler, Lab. Technician; Danielle Pereyra, Lab. Technician; Chelsea Sobtzak, Lab. Technician, and Vacant, Student Worker Paraprofessional.

- Jason Peterson, Research Scientist 2 Supervisor, Chemical Threats and Biomonitoring Unit: Martin Bevan, Research Scientist 3; Carin Huset, Research Scientist 3; Kitrina Barry, Research Scientist 3; Vacant, Research Scientist 2; Breahna Giles, Research Scientist 2; Tim Richmond, Research Scientist 2; Vacant, Research Scientist 2, Joshua Carver, Research Scientist 2; Vacant, Research Scientist 2; Rachel Reichow, Research Scientist 2; Paul Fiesel, Research Scientist 2; Emily Stoltz, Research Scientist 1; and Caitlyn Almberg, Research Scientist 1.
- Shane Olund, Research Scientist Supervisor, Emerging Contaminants Unit: Matt Wogen, Research Scientist 3; Marla DeVault, Research Scientist 2; Nathan Ferrey, Research Scientist 2; Johanna Jernberg, Research Scientist 2, Andrew Mittendorff, Lab. Scientist 3; Zach Dodson, Lab. Scientist 2; Shelby Start, Lab. Scientist 2; Austin Allen, Lab. Scientist 2; Michael Merrick, Lab. Scientist 2: and Katie Schlasner, Lab. Scientist 2.

Newborn Screening Program Section:

Carrie Wolf is the Newborn Screening Program Section Manager. The five Unit Supervisors listed below report directly to the Newborn Screening Section Manager.

- Amy Hietala, Research Scientist 2 Supervisor, MSMS Laboratory Unit: Alisha Wruck, Research Scientist 2; Jingfang Huang, Research Scientist 2; Colin Lord, Research Scientist 2; Veronica Gonzalez, Lab. Scientist 3; Yer Xiong, Lab. Scientist 2; and Jazmin Mendez-Velasco, Lab. Scientist 2.
- Trena Lapacinski-Ludens, Research Scientist 2 Supervisor, Molecular and Core Laboratory Unit: Vacant, Research Scientist 3, Michelle Lucio, Research Scientist 2; Suzanne Skoog, Research Scientist 2; Nelmary Hernandez-Alvarado, Research Scientist 2; Julie Thao, Lab. Scientist 3; Vacant, Lab. Scientist 3; Alexandra Ulen, Lab. Scientist 3; Anni Fahlstrom, Lab. Scientist 3; Rosie Gross, Lab. Scientist 2; Vacant, Lab. Scientist 2; and Sasha Buchner, Lab. Scientist 2.
- Sondra Rosendahl, Health Program Rep. Principal, Supervisor, Newborn Screening Follow-Up Unit: Kirsten Coverstone, Audiologist; Melanie Wege, Audiologist; Glenna Noska , Geneticist, Katherine Schroepfer, Geneticist; Jenna Soukup, Geneticist; Amy Dahle, Planner Principal State; Annika Strong, Health Program Rep. Senior; Keely Yang, Health Program Rep. Senior; Jenna Hullerman Umar; Health Program Rep Intermediate; Amelia Berry, Health Program Rep. Intermediate; Maya Johnson, Health Program Rep. Intermediate; and Gretchen Radloff, Health Program Rep. Intermediate; Judy Johnson, Health Program Rep.; and Nick Vittum, Health Program Rep.
- Holly Winslow, Research Scientist 2 Supervisor, Data & Quality Unit: Tory Kaye, Epidemiologist Principal; Amanda Pavan, Epidemiologist Senior; Karissa Tricas, Research Analyst Intermediate; Heather Brand, Planner Principal State; Emily Morrison, Research Scientist 2; Lindsey Lopees, Management Analyst Staff Specialist; and Vacant, Health Program Rep Sr.
- Ron Brown, State Program Admin. Principal, Supervisor, Newborn Screening Operations Unit: Jessica Cavazos, Communications Specialist 3; Samantha Colston, Communications Specialist 2; Vacant, Management Analyst 3.; Cindy Yang, Management Analyst 2; Angela Lancette, Health Program Rep.; Shelly Ciampi, Health Program Rep.; Sherita Thomas, Office Administrative Specialist; and Wendy Mielke, Office Administrative Specialist.