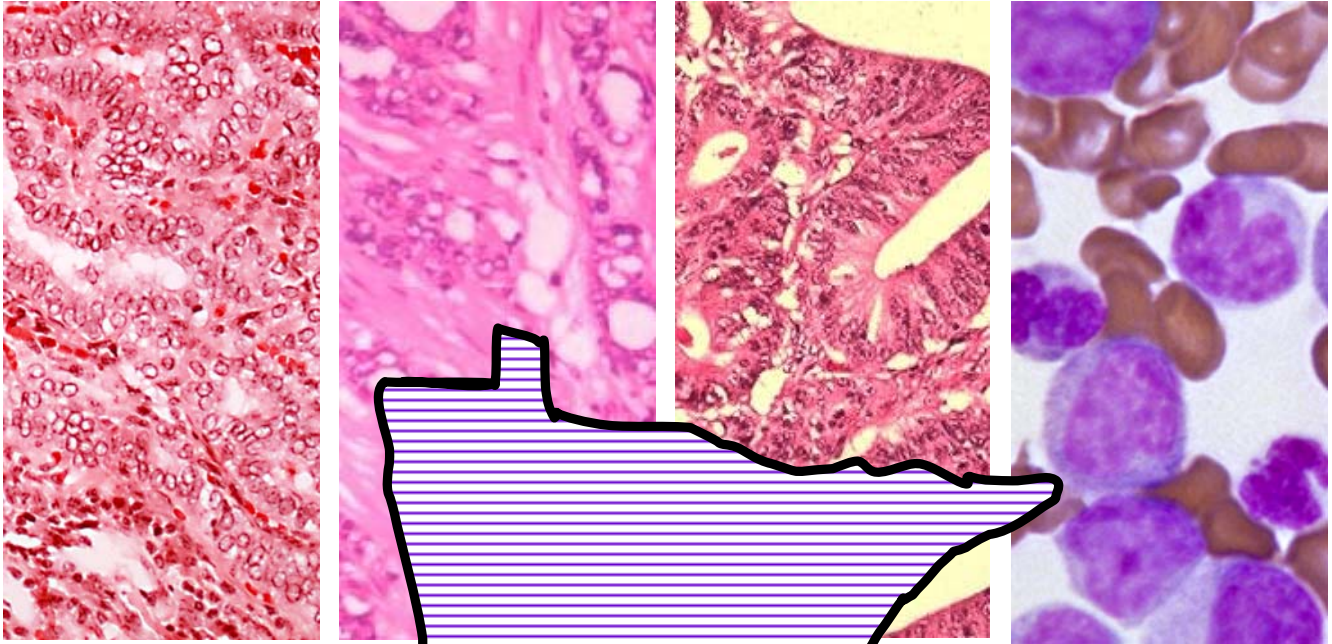


# Cancer in Minnesota 1988 – 2002



**Minnesota Department of Health**  
Minnesota Cancer Surveillance System





*Protecting, maintaining and improving the health of all Minnesotans*

October 7, 2005

Dear Colleague:

We are very pleased to present the eighth biennial report of the Minnesota Cancer Surveillance System (MCSS) on the occurrence of cancer in Minnesota, as required by Minnesota Statute 144.672, Subdivision 2.

Each of us has been, or will be, touched by cancer. Statistics presented in this report tell us that half of all Minnesotans will be diagnosed with a potentially serious cancer at some point during their lives. This report documents important successes – decreasing rates of smoking-related cancers and prostate cancer mortality among men, breast cancer mortality among women, and colorectal cancer among both men and women. It also points to continuing challenges – increasing incidence rates of melanoma and thyroid cancer among both men and women, prostate cancer among men, and lung and breast cancer among women. In addition, this report makes evident the disproportionate burden of cancer among persons of color. Of special concern are American Indians in Minnesota, whose risk of dying of cancer is twice that of American Indians in the United States as a whole. On the other hand, the results of examining cancer rates in different regions of the state should reassure Minnesotans that their risk of developing cancer is not dictated by where they choose to live.

The MCSS is a powerful tool for public health, and its value increases with each year of data collection. Over the last two years, MCSS has collaborated with public, private and non-profit organizations to develop *Cancer Plan Minnesota 2005-2010*, our state's first comprehensive cancer control plan. Planning partners have formed a new coalition, the Minnesota Cancer Alliance, to provide a forum through which cancer control activities can be better coordinated to make optimal use of limited resources and to more fully realize opportunities for innovation. We encourage all organizations and individuals dedicated to reducing the burden of cancer for all Minnesotans to join the Alliance.

This report was prepared by MCSS staff under the direction of Dr. Sally Bushhouse. Questions and comments on the report can be directed to the MCSS at (651) 201-5900.

Sincerely,

A handwritten signature in cursive script, reading "Dianne Mandernach", is written over a horizontal line.

Dianne M. Mandernach  
Commissioner  
P.O. Box 64975  
St. Paul, MN 55164-0975

# **Cancer in Minnesota, 1988-2002**

*Report to the Minnesota Legislature 2005*

---

**October 2005**

**For more information, contact:**

**Minnesota Cancer Surveillance System**

**Health Promotion & Chronic Disease Division**

**Health Improvement Bureau**

**Minnesota Department of Health**

**85 East Seventh Place**

**P.O. Box 64882**

**Saint Paul, Minnesota 55164**

**<http://www.health.state.mn.us/divs/hpcd/cdee/mcss/>**

**Phone: (651) 201-5900**

**Fax: (651) 201-5926**

**TDD: (651) 201-5797**

As requested by Minnesota Statute 3.197: This report cost approximately \$25,000.00 to prepare, including staff time, printing, and mailing expenses.

Upon request, this publication will be made available in alternative formats, such as large print, Braille, or cassette tape.

Printed on recycled paper.

## ACKNOWLEDGEMENTS

**MINNESOTA DEPARTMENT OF HEALTH**  
Dianne M. Mandernach, Commissioner  
Lynda Boudreau, Deputy Commissioner

### Minnesota Cancer Surveillance System Staff

Vickie Assad, RHIT	Shannon McNamara
Jerryn Ballard, CTR	Jenny Neuman, RHIT
JoAnn Bitker, RHIT, CTR	Carin Perkins, PhD
Jane Braun, MS, CTR	Kristi Randall
Margee Brown, MPH	Alex Ryabinin
Sally Bushhouse, DVM, PhD	Mila Ryabinin
Elaine Collins, MS, RHIA, CTR	Wendy Scharber, RHIT, CTR
Lynda Diedrich, CTR	Ed Schneider, JD
Carol Forbes-Manske, RHIT, CTR	Erin Seaverson, MPH
Jackie Harte	Gene Senger
Donna Hattenberger, RHIT, CTR	John Soler, MPH
Troy Johnson	Kirsti Taipale, CTR
Cheryl Korpela, RHIT	Chris Wein
Gail Kvernmoe, RHIT, CTR	Sue Wozniak
Kristine Lenser, CTR	

### Minnesota Cancer Surveillance System Advisory Group Members

Alan P. Bender, DVM, PhD	Aaron Folsom, MD
David Benson	Kathleen McKeen
James R. Cerhan, MD, PhD	Charles Murray, MD
Gretchen S. Crary, MD	Leslie Robison, PhD
Robert Dalton, MD	John L. Young, Jr, DrPH, CTR
Charles Fazio, MD	Jo Zwilling, RN, MBA

### Chronic Disease & Environmental Epidemiology Staff who contributed to this report:

Dianna Roerig, Sally Sabathier

Sincere thanks to the cancer registrars, laboratory personnel, and health care providers throughout Minnesota and neighboring states whose diligence in data collection and reporting make this report possible. The MCSS, including preparation of this report, was supported by Cooperative Agreement Number UC75/CCU510693 from the Centers for Disease Control and Prevention. The contents of this work are solely the responsibility of the authors and do not necessarily represent the official views of the Centers for Disease Control and Prevention.

### On the Cover

Images courtesy of the Centers of Disease Control and Prevention Public Health Image Library.  
*Left to right, 1) Histopathology of papillary carcinoma, thyroid; 2) Histopathology of adenocarcinoma, prostate; 3) Histopathology of adenocarcinoma, colon (images 1-3 provided by Dr. Edwin P. Ewing, Jr.); 4) Blast crisis of chronic myelogenous leukemia (image 4 provided by Stacy Howard).*

### SUGGESTED CITATION:

Seaverson E, Perkins C, Soler J, Brown M, Bushhouse S. *Cancer in Minnesota, 1988-2002*. Minneapolis, Minnesota: Minnesota Cancer Surveillance System, Minnesota Department of Health, October 2005.

## Table of Contents

<b>Summary</b> .....	vii
<b>Minnesota Cancer Alliance</b> .....	viii
<b>Questions and Answers about MCSS Data Privacy</b> .....	ix
<b>Chapter I: Introduction</b>	
Data Sources .....	3
Data Presentation and Interpretation .....	4
Completeness and Quality of Data.....	6
Data on Race and Ethnicity.....	7
Uses of MCSS Data .....	9
Statistical Methods.....	10
Protection of Individual Privacy .....	10
Table I-1: North American Association of Central Cancer Registries certification results: quality, completeness, and timeliness of 2002 data, Minnesota Cancer Surveillance System .....	11
Table I-2: Publications (2003-2004) .....	11
Table I-3: Applications requesting data for research as of January 2005 .....	16
<b>Chapter II: Overview</b>	
Cancer Incidence and Mortality in Minnesota by Gender and Age.....	21
Race and Ethnic Disparities in Cancer in Minnesota.....	22
Cancer Trends in Minnesota .....	25
Geographic Variation in the Occurrence of Cancer in Minnesota.....	28
Minnesota Cancer Prevalence .....	30
Table II-1: Number of new cases and deaths and average annual incidence and mortality rates by anatomic site and gender, all races combined, Minnesota, 1998-2002 .....	33
Table II-2: Age-specific rates of newly diagnosed cancers by anatomic site, males, all races combined, Minnesota, 1998-2002.....	36
Table II-3: Age-specific rates of newly diagnosed cancers by anatomic site, females, all races combined, Minnesota, 1998-2002.....	39
Table II-4: Age-specific rates of cancer deaths by anatomic site, males, all races combined, Minnesota, 1998-2002 .....	42
Table II-5: Age-specific rates of cancer deaths by anatomic site, females, all races combined, Minnesota, 1998-2002 .....	45
Table II-6: The five most commonly diagnosed cancers by race and ethnicity and gender, Minnesota, 1998-2002 .....	48
Table II-7: Cancer incidence and mortality rates by race and ethnicity for selected cancers, Minnesota, 1998-2002 .....	49
Table II-8: Estimated complete cancer prevalence by anatomic site and gender, Minnesota, January 1, 2002 ...	50
Table II-9: Estimated five-year cancer prevalence by anatomic site and gender, Minnesota, January 1, 2002....	51
Figure II-1: Ten Most Common Cancer Diagnoses and Deaths among Males, Minnesota, 1998-2002 .....	53

## Table of Contents

Figure II-2: Ten Most Common Cancer Diagnoses and Deaths among Females, Minnesota, 1998-2002 .....	53
Figure II-3: Percent of Cancers Diagnosed by Age Category among Selected Cancers, Minnesota, 1998-2002 .....	54
Figure II-4: Cancer Incidence and Mortality Rates by Race and Ethnicity, Minnesota, 1998-2002, All Cancer Sites Combined .....	55
Figure II-5: Cancer Incidence and Mortality Rates by Race and Ethnicity, SEER Program, 1998-2002, All Cancer Sites Combined .....	55
Figure II-6: Cancer Incidence in Minnesota by Year, 1988-2002 .....	56
Figure II-7: Cancer Mortality in Minnesota by Year, 1988-2002 .....	56
Figure II-8: Trends in Cancer Incidence by Gender, Minnesota and SEER, 1975-2002 .....	57
Figure II-9: Trends in Cancer Mortality by Gender, Minnesota and the U.S., 1975-2002 .....	57
Figure II-10: Average Annual Percent Change in Cancer Incidence among Males, Minnesota, 1988-2002 .....	58
Figure II-11: Average Annual Percent Change in Cancer Mortality among Males, Minnesota, 1988-2002 .....	59
Figure II-12: Average Annual Percent Change in Cancer Incidence among Females, Minnesota, 1988-2002 .....	60
Figure II-13: Average Annual Percent Change in Cancer Mortality among Females, Minnesota, 1988-2002 .....	61
Figure II-14: Trends in Lung and Bronchus Cancer Mortality by Gender, Minnesota, 1988-2002 .....	62
Figure II-15: Trends in Colon and Rectum Cancer Incidence by Gender, Minnesota, 1988-2002 .....	62
Figure II-16: Trends in Female Breast Cancer Incidence and Mortality, Minnesota, 1988-2002 .....	63
Figure II-17: Trends in Prostate Cancer Incidence and Mortality, Minnesota, 1988-2002 .....	63
Figure II-18: Cancer Incidence among Non-Hispanic Whites by Region, Minnesota, 1998-2002, All Cancer Sites Combined .....	64
Figure II-19: Lung and Bronchus Cancer Incidence among Non-Hispanic Whites by Region, Minnesota, 1998-2002 .....	64
Figure II-20: Lung and Bronchus Cancer Incidence among Non-Hispanic Whites by Gender and Region, Minnesota, 1998-2002 .....	65
Figure II-21: Colon and Rectum Cancer Incidence among Non-Hispanic Whites by Region, Minnesota, 1998-2002 .....	65
Figure II-22: Female Breast Cancer Incidence among Non-Hispanic Whites by Region, Minnesota, 1998-2002 .....	66
Figure II-23: Prostate Cancer Incidence Trends by Region, All Races Combined, Minnesota, 1988-2002 .....	66
Figure II-24: Mesothelioma Incidence among Non-Hispanic Whites by Gender and Region, Minnesota, 1998-2002 .....	67

## Chapter III: Summary of Data for Specific Cancers

Introduction .....	71
<b>Specific Cancers</b>	
All Cancer Sites Combined .....	72
Childhood Cancers .....	75
Brain and Other Nervous System .....	78
Breast .....	80
Cervix Uteri .....	82
Colon and Rectum .....	84
Corpus Uteri .....	86
Esophagus .....	88
Hodgkin Lymphoma .....	90
Kaposi Sarcoma .....	92
Kidney and Renal Pelvis .....	94

Larynx .....	96
Leukemia .....	98
Liver and Bile Duct .....	100
Lung and Bronchus .....	102
Melanoma of the Skin .....	104
Mesothelioma .....	106
Multiple Myeloma .....	108
Non-Hodgkin Lymphoma .....	110
Oral Cavity and Pharynx .....	112
Ovary .....	114
Pancreas .....	116
Prostate .....	118
Soft Tissues .....	120
Stomach .....	122
Testis .....	124
Thyroid .....	126
Urinary Bladder .....	128

**Chapter IV: Cancer in Minnesota Counties and Regions, 1998-2002**

Introduction .....	133
--------------------	-----

Tables IV-1– IV-87:

1998-2002 observed and expected number of cancers and average annual incidence rates for selected sites, all races combined

Aitkin County.....	134
Anoka County.....	135
Becker County .....	136
Beltrami County.....	137
Benton County .....	138
Big Stone County .....	139
Blue Earth County .....	140
Brown County.....	141
Carlton County.....	142
Carver County .....	143
Cass County .....	144
Chippewa County .....	145
Chisago County.....	146
Clay County.....	147
Clearwater County.....	148
Cook County.....	149
Cottonwood County.....	150
Crow Wing County.....	151
Dakota County.....	152
Dodge County .....	153
Douglas County.....	154
Faribault County .....	155
Fillmore County .....	156

*Table of Contents*

Freeborn County .....	157
Goodhue County .....	158
Grant County .....	159
Hennepin County.....	160
Houston County .....	161
Hubbard County.....	162
Isanti County .....	163
Itasca County.....	164
Jackson County .....	165
Kanabec County.....	166
Kandiyohi County.....	167
Kittson County.....	168
Koochiching County .....	169
Lac Qui Parle County .....	170
Lake County .....	171
Lake of the Woods County .....	172
Le Sueur County .....	173
Lincoln County.....	174
Lyon County .....	175
McLeod County.....	176
Mahnomen County .....	177
Marshall County .....	178
Martin County .....	179
Meeker County .....	180
Mille Lacs County .....	181
Morrison County.....	182
Mower County .....	183
Murray County.....	184
Nicollet County .....	185
Nobles County.....	186
Norman County.....	187
Olmsted County .....	188
Otter Tail County .....	189
Pennington County .....	190
Pine County .....	191
Pipestone County .....	192
Polk County .....	193
Pope County.....	194
Ramsey County .....	195
Red Lake County.....	196
Redwood County.....	197
Renville County.....	198
Rice County .....	199
Rock County.....	200
Roseau County.....	201
St. Louis County.....	202

Scott County .....	203
Sherburne County .....	204
Sibley County .....	205
Stearns County .....	206
Steele County.....	207
Stevens County.....	208
Swift County .....	209
Todd County .....	210
Traverse County .....	211
Wabasha County .....	212
Wadena County .....	213
Waseca County.....	214
Washington County.....	215
Watonwan County .....	216
Wilkin County .....	217
Winona County .....	218
Wright County .....	219
Yellow Medicine County.....	220

Tables IV-88 – IV-95:

1998-2002 observed and expected number of cancers and average annual incidence rates for selected sites, all races combined	
Northeastern Region .....	221
Northwestern Region .....	222
West Central Region .....	223
Central Region.....	224
Southwestern Region.....	225
South Central Region.....	226
Southeastern Region .....	227
Metropolitan Region .....	228

**Appendices**

Appendix A: Definitions for Cancer Incidence Data.....	231
Appendix B: Definitions for Cancer Mortality Data .....	235
Appendix C: Definitions of Minnesota Regions .....	239
Appendix D: Glossary .....	241
Appendix E: Statistical Methods.....	245

[This page left intentionally blank.]