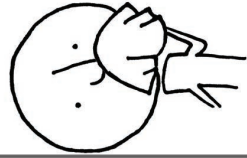
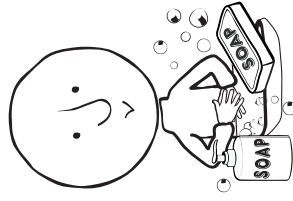
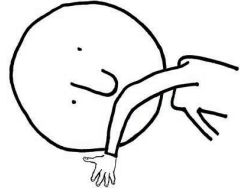


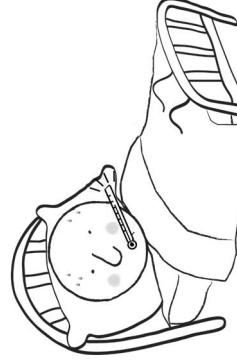
La Dagaallanka Hargabka



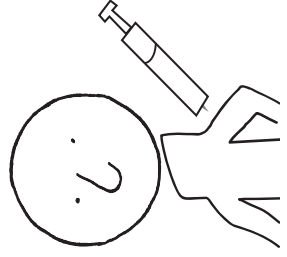
**Qufacaaga dabool!**



**Gacmahaaga dhaq.**

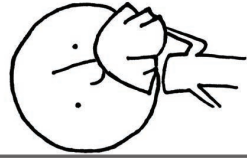


**Guriga joog mar'kaad  
jirran tahay.**

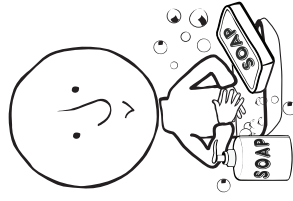
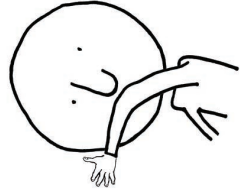


**Ha lagu tallaalo.**

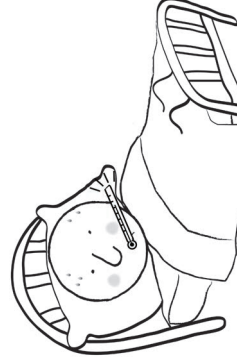
La Dagaallanka Hargabka



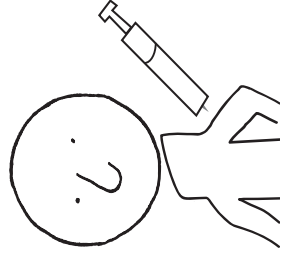
**Qufacaaga dabool!**



**Gacmahaaga dhaq.**

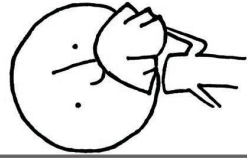


**Guriga joog mar'kaad  
jirran tahay.**

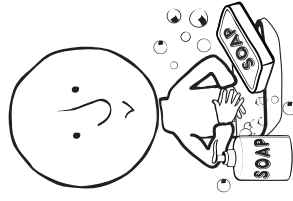
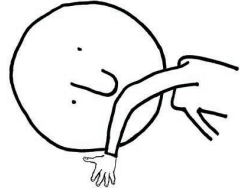


**Ha lagu tallaalo.**

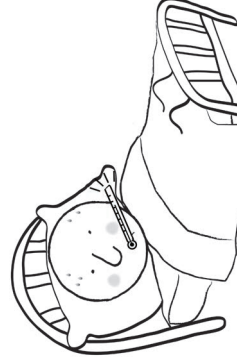
La Dagaallanka Hargabka



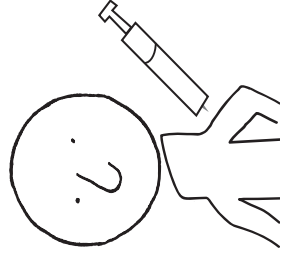
**Qufacaaga dabool!**



**Gacmahaaga dhaq.**

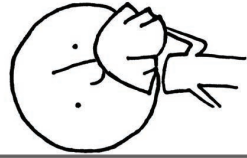


**Guriga joog mar'kaad  
jirran tahay.**

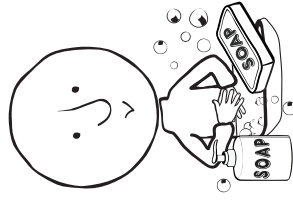
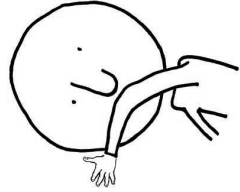


**Ha lagu tallaalo.**

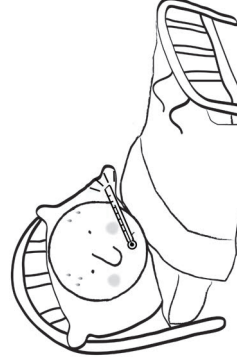
La Dagaallanka Hargabka



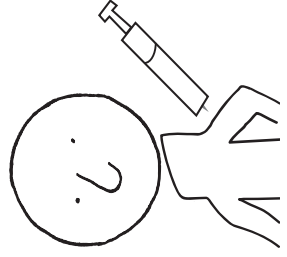
**Qufacaaga dabool!**



**Gacmahaaga dhaq.**



**Guriga joog mar'kaad  
jirran tahay.**



**Ha lagu tallaalo.**

# **FIGHT** the **FLU**

La Dagaallanka Hargabka

## **Questions about flu?**

**Minnesota Department  
of Health**

[www.mdhflu.com](http://www.mdhflu.com)

**Centers for Disease  
Control**

[www.cdc.gov](http://www.cdc.gov)

1-800-CDC-INFO  
(800-232-4636)

TTY: 1-888-232-6348  
24 hours/every day

**Your city or county public  
health department**

# **FIGHT** the **FLU**

La Dagaallanka Hargabka

## **Questions about flu?**

**Minnesota Department  
of Health**

[www.mdhflu.com](http://www.mdhflu.com)

**Centers for Disease  
Control**

[www.cdc.gov](http://www.cdc.gov)

1-800-CDC-INFO  
(800-232-4636)

TTY: 1-888-232-6348  
24 hours/every day

**Your city or county public  
health department**

# **FIGHT** the **FLU**

La Dagaallanka Hargabka

## **Questions about flu?**

**Minnesota Department  
of Health**

[www.mdhflu.com](http://www.mdhflu.com)

**Centers for Disease  
Control**

[www.cdc.gov](http://www.cdc.gov)

1-800-CDC-INFO  
(800-232-4636)

TTY: 1-888-232-6348  
24 hours/every day

**Your city or county public  
health department**

# **FIGHT** the **FLU**

La Dagaallanka Hargabka

## **Questions about flu?**

**Minnesota Department  
of Health**

[www.mdhflu.com](http://www.mdhflu.com)

**Centers for Disease  
Control**

[www.cdc.gov](http://www.cdc.gov)

1-800-CDC-INFO  
(800-232-4636)

TTY: 1-888-232-6348  
24 hours/every day

**Your city or county public  
health department**

