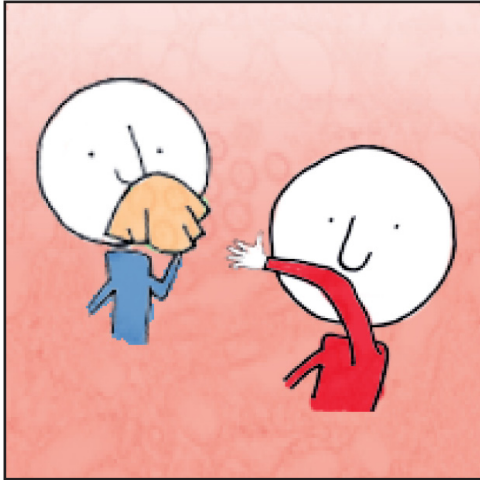
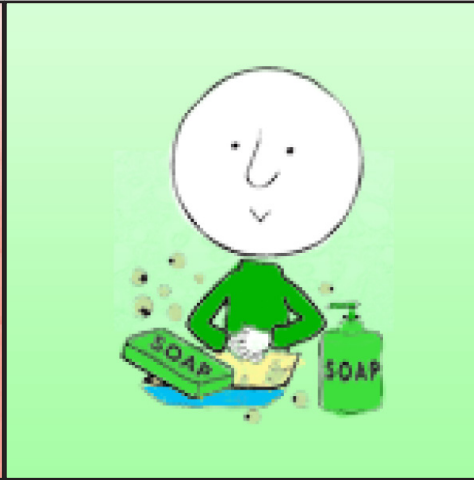


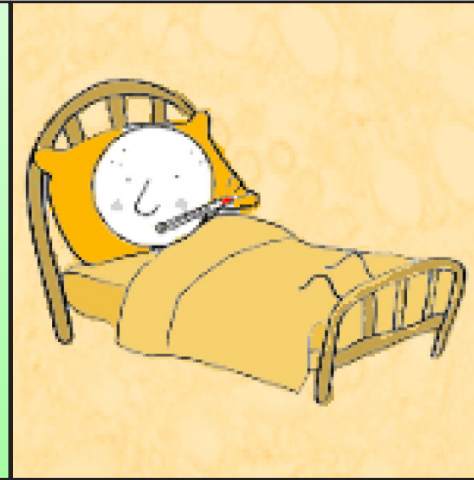
Qufaa irraa if Eegi



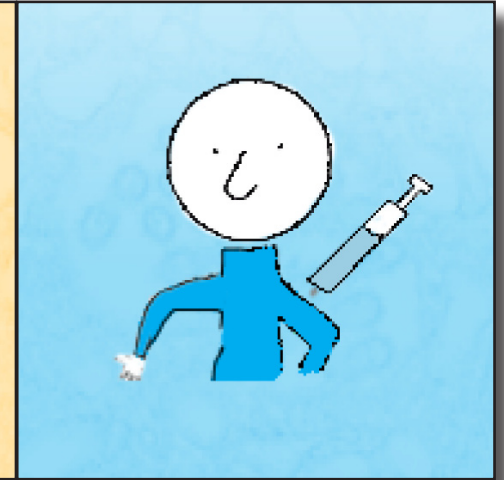
**Yeroo qufaatu
afaanii fi funyaan
kee cuqqaalladhu!**



**Harka
kee
dhiqadhu.**



**Dhukkubsannaan
manaa hin bahin.**



Talaalladhu.

Your city or county
public health department

Naanno keetti kan dhihatu kiliinika Kitibaatii/lilme'e golfaa ykn filuu itti kennamu argi

www.mdhflu.com

