

Weekly Influenza & Respiratory Illness Activity Report

A summary of influenza surveillance indicators prepared by the Division of Infectious Disease Epidemiology Prevention & Control

Summary of the 2014-15 Influenza Season

All data are preliminary and may change as more reports are received



Summary of the 2014-15 Season

- 4,153 people were hospitalized with laboratory-confirmed influenza
- 10 pediatric influenza-related deaths were confirmed
- 192 outbreaks of influenza in long-term care were reported
- 706 outbreaks of ILI in schools were reported

Minnesota Influenza Surveillance Website: <http://www.health.state.mn.us/divs/idepc/diseases/flu/stats/>

Weekly U.S. Influenza Surveillance Report: <http://www.cdc.gov/flu/weekly/>

World Health Organization (WHO) Surveillance: http://www.who.int/influenza/surveillance_monitoring/updates/en/

Google Flu Trends: <http://www.google.org/flutrends/us/#US>

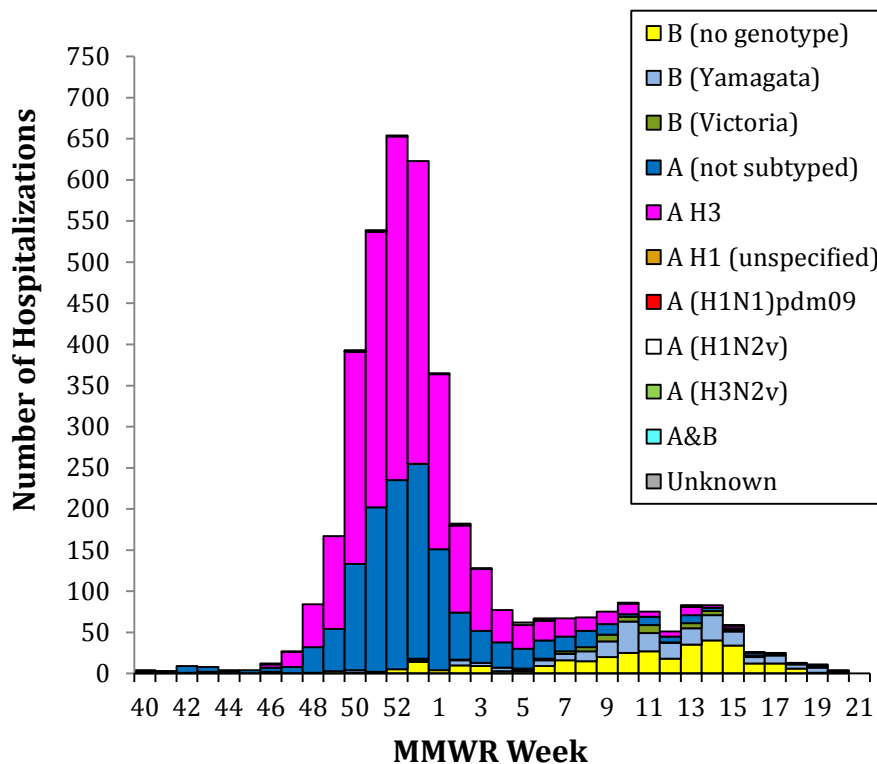
Neighboring states' influenza information:

Iowa	http://www.idph.state.ia.us/IdphArchive/Archive.aspx?channel=FluReports
Wisconsin	http://www.dhs.wisconsin.gov/communicable/influenza/surveillance.htm
North Dakota	http://www.ndflu.com/default.aspx
South Dakota	http://doh.sd.gov/diseases/infectious/flu/

Hospitalized Influenza Surveillance

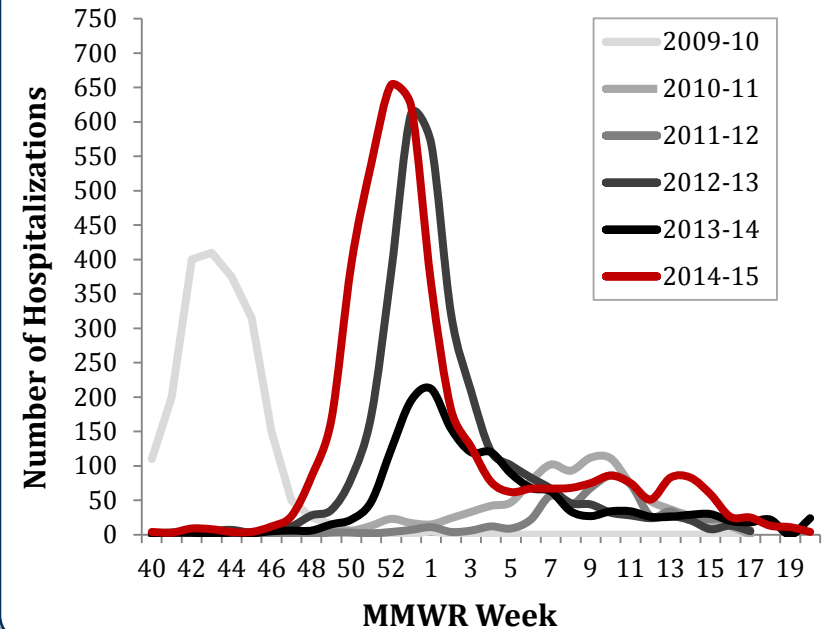
Hospitalized influenza cases are based on disease reports of laboratory-positive influenza (via DFA, IFA, viral culture, EIA, rapid test, paired serological tests or RT-PCR) and specimens from hospitalized patients with acute respiratory illness submitted to MDH-PHL by hospitals and laboratories.

Hospitalized Influenza Cases by Type Minnesota (FluSurv-NET*)



*Influenza Surveillance Network

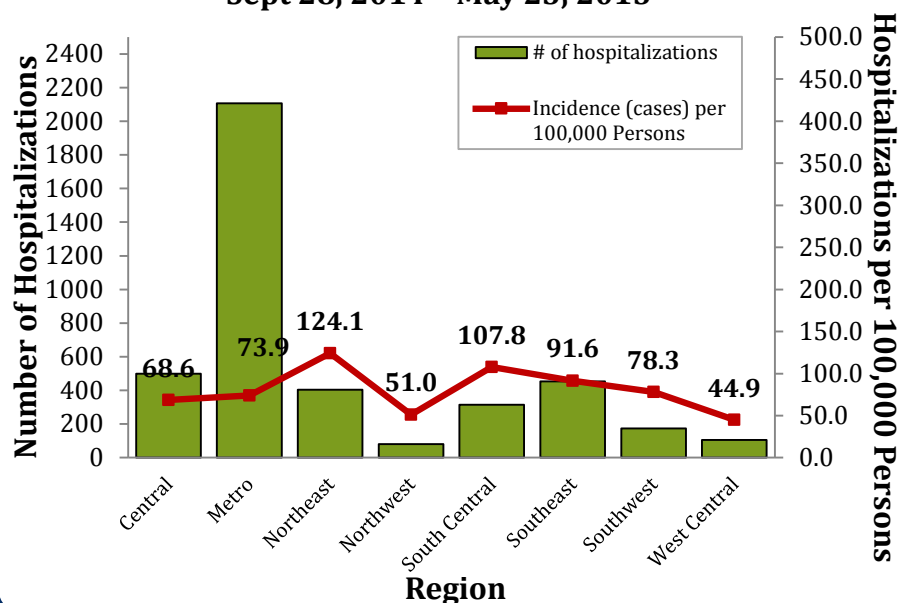
Hospitalized Influenza Cases by Season, Minnesota (FluSurv-NET*)



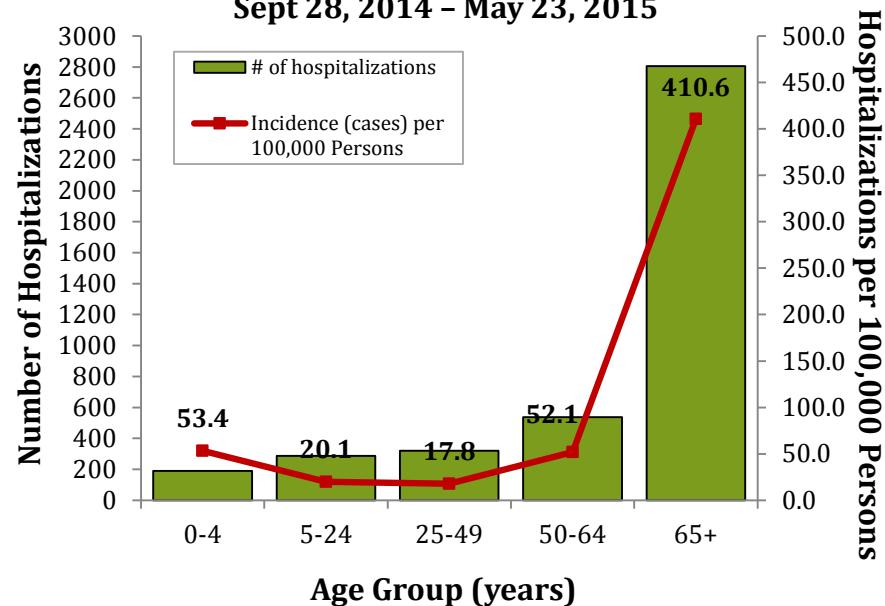
Season	Total Hospitalizations (historic)
2009-2010	2,060
2010-2011	965
2011-2012	556
2012-2013	3,068
2013-2014	1,540
2014-2015	4,138

Hospitalized Influenza Surveillance – continued

**Number of Influenza Hospitalizations and Incidence by Region, Minnesota
Sept 28, 2014 – May 23, 2015**



**Number of Influenza Hospitalizations and Incidence by Age, Minnesota
Sept 28, 2014 – May 23, 2015**



Region	Total (to date)
Central	500 (12%)
Metro	2,107 (51%)
Northeast	405 (10%)
Northwest	80 (2%)
South Central	314 (8%)
Southeast	453 (11%)
Southwest	174 (4%)
West Central	105 (3%)

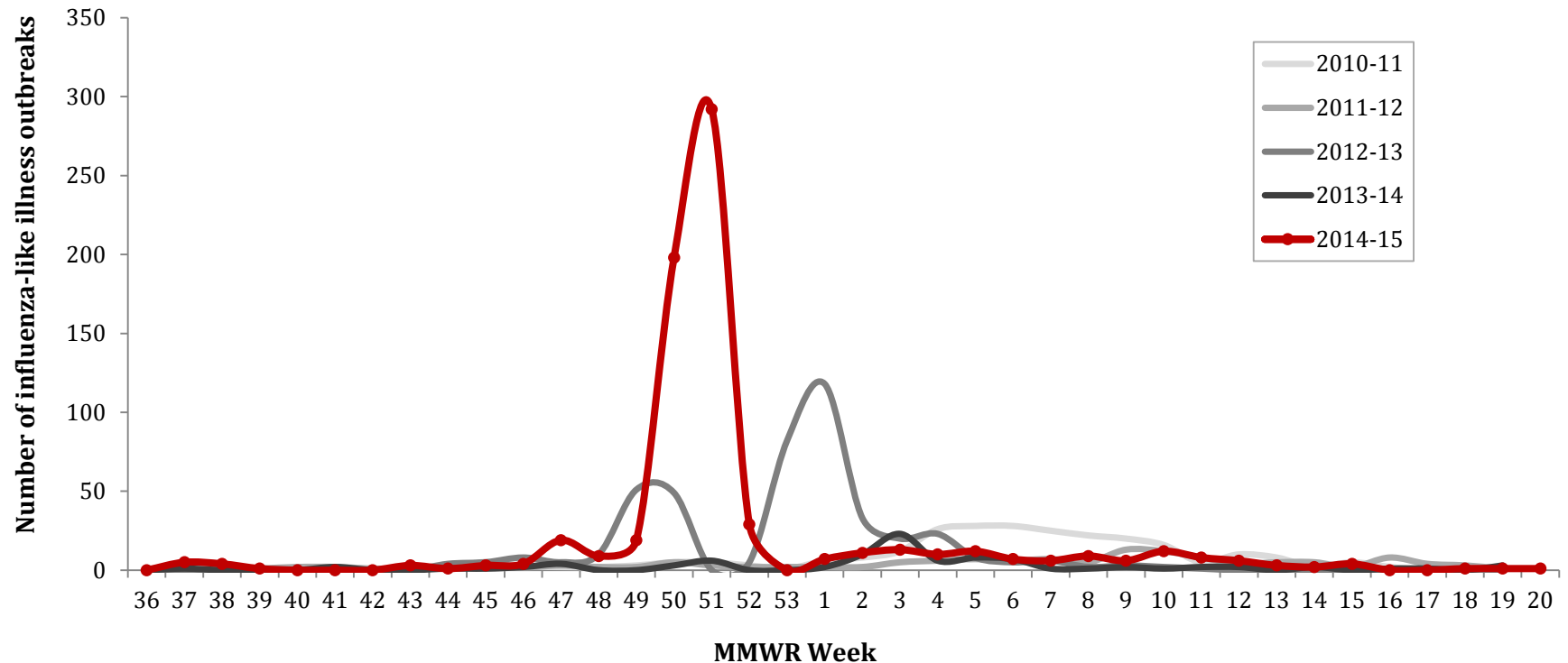
Median age (years) at time of admission
76.0

Respiratory Disease Outbreak Surveillance

School Outbreaks

K-12 schools report an outbreak of influenza-like illness (ILI) when the number of students absent with ILI reaches 5% of total enrollment or three or more students with ILI are absent from the same elementary classroom

Influenza-like Illness (ILI) in Schools by Season



Total

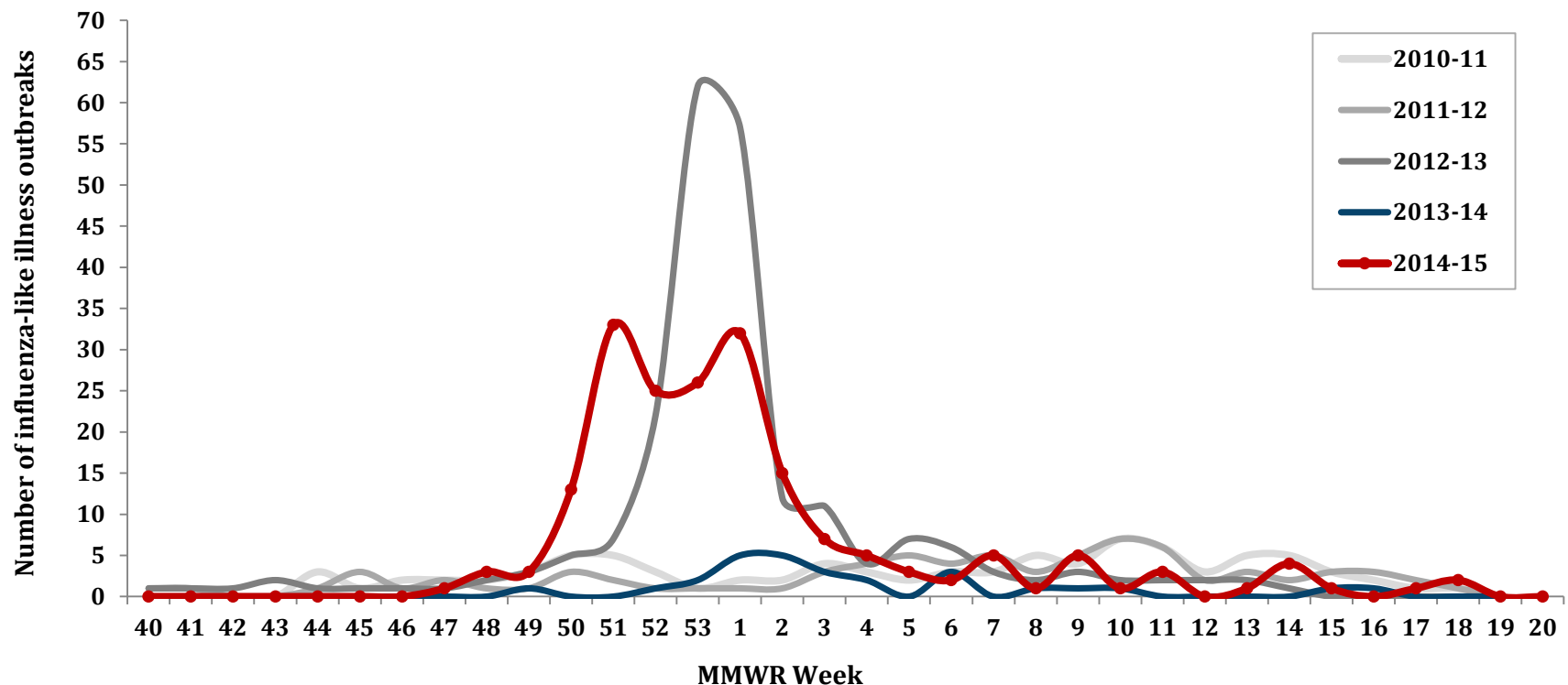
705

Respiratory Disease Outbreak Surveillance

Long-Term Care (LTC) Outbreaks

LTC facilities report to MDH when they suspect an outbreak of influenza in their facility. Laboratory confirmed outbreaks are reported here

Influenza-like Illness (ILI) in LTC by Season



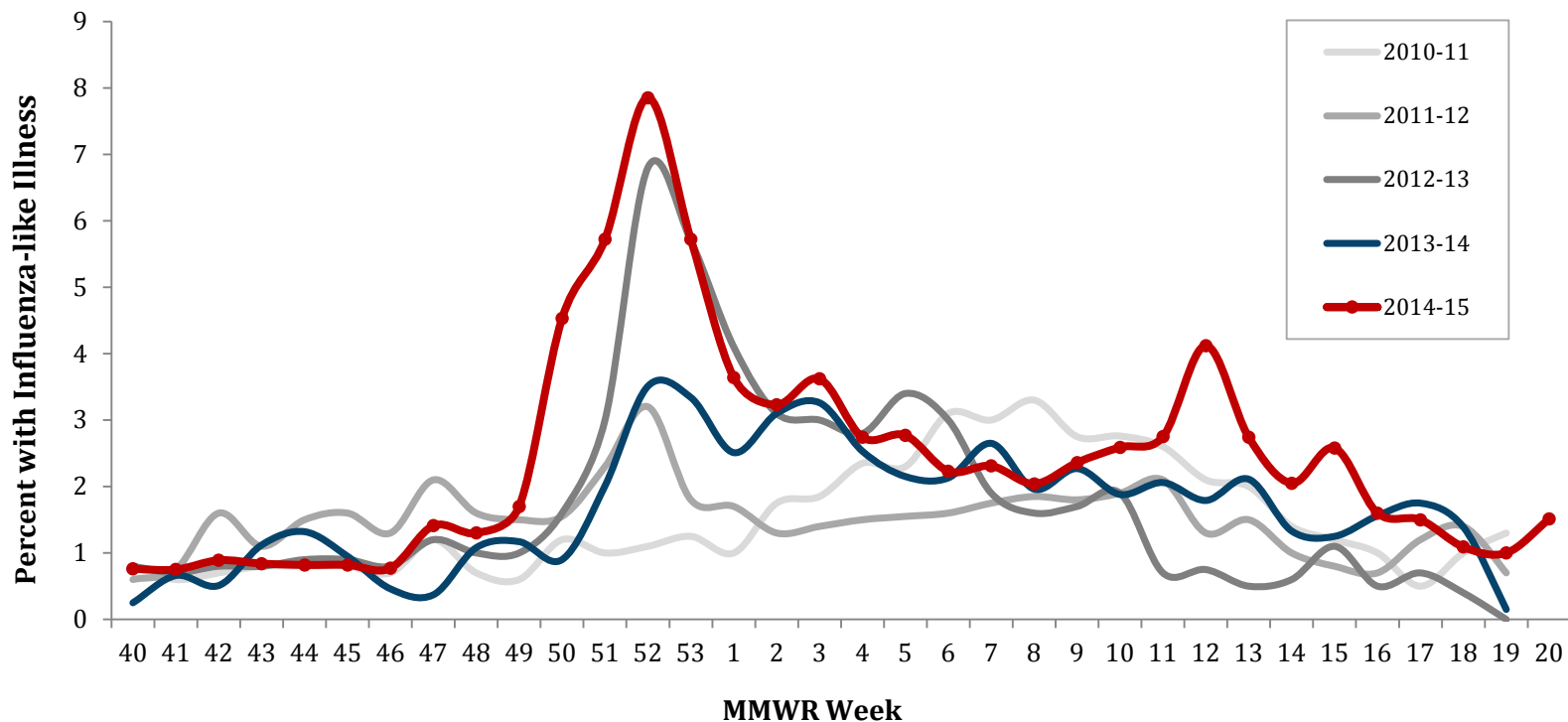
Total

192

Sentinel Provider Surveillance (Outpatients)

MDH collaborates with healthcare providers who report the total number of patients seen and the total number of those patients presenting to outpatient clinics with influenza-like illness.

Percentage of Persons Presenting to Outpatient Clinics with Influenza-Like Illness (ILI)

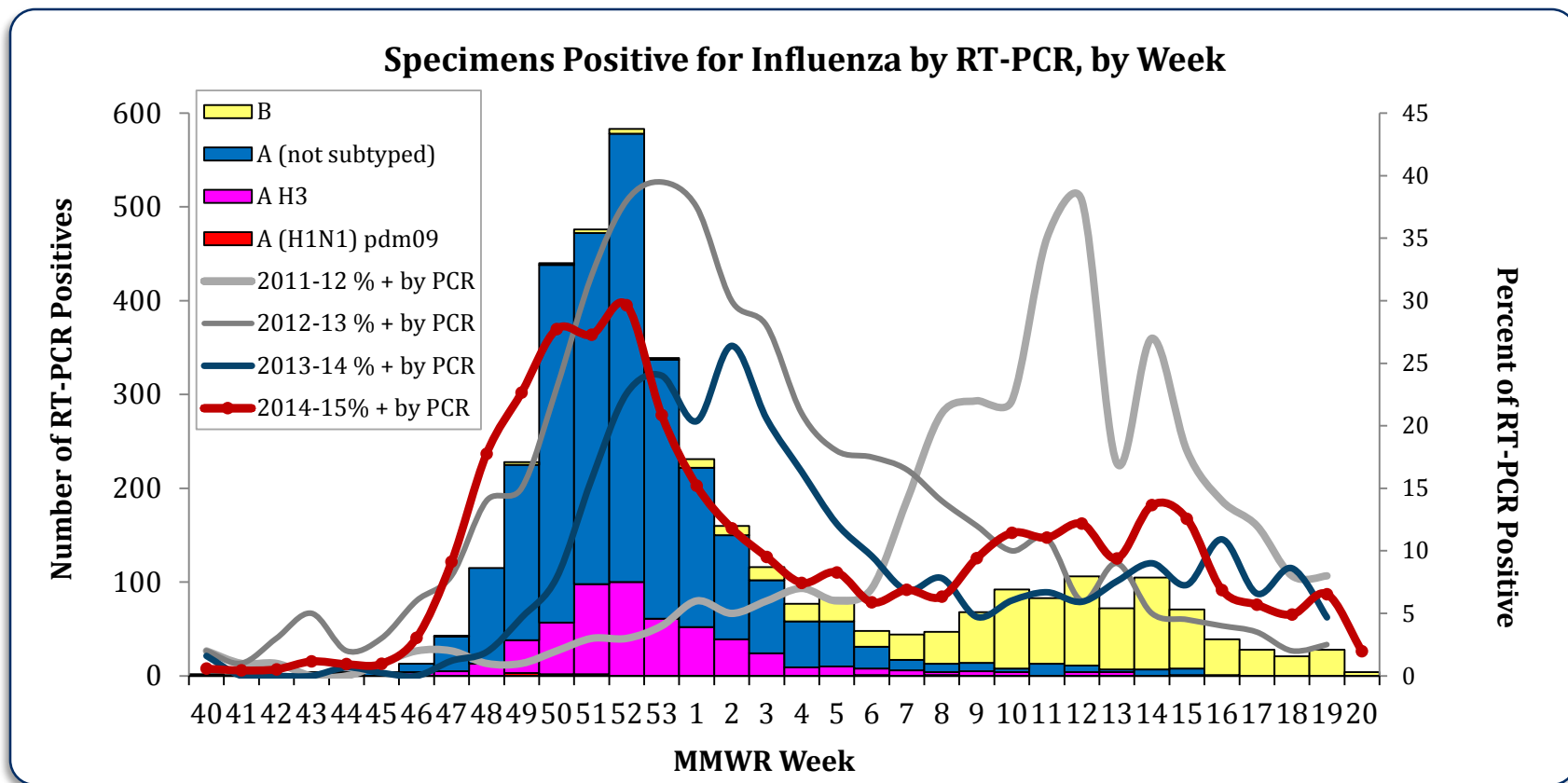


**Peak % of
outpatients
with ILI**

7.85%

Laboratory Surveillance

The MN Lab System (MLS) Laboratory Influenza Surveillance Program is made up of more than 310 clinic- and hospital-based laboratories, voluntarily submitting testing data weekly. These laboratories perform rapid testing for influenza and Respiratory Syncytial Virus (RSV). Significantly fewer labs perform PCR testing for influenza and three also perform PCR testing for other respiratory viruses. MDH-PHL provides further characterization of submitted influenza isolates to determine the hemagglutinin serotype to indicate vaccine coverage. Tracking the laboratory results assists healthcare providers with patient diagnosis of influenza-like illness and provides an indicator of the progression of the influenza season as well as prevalence of disease in the community.



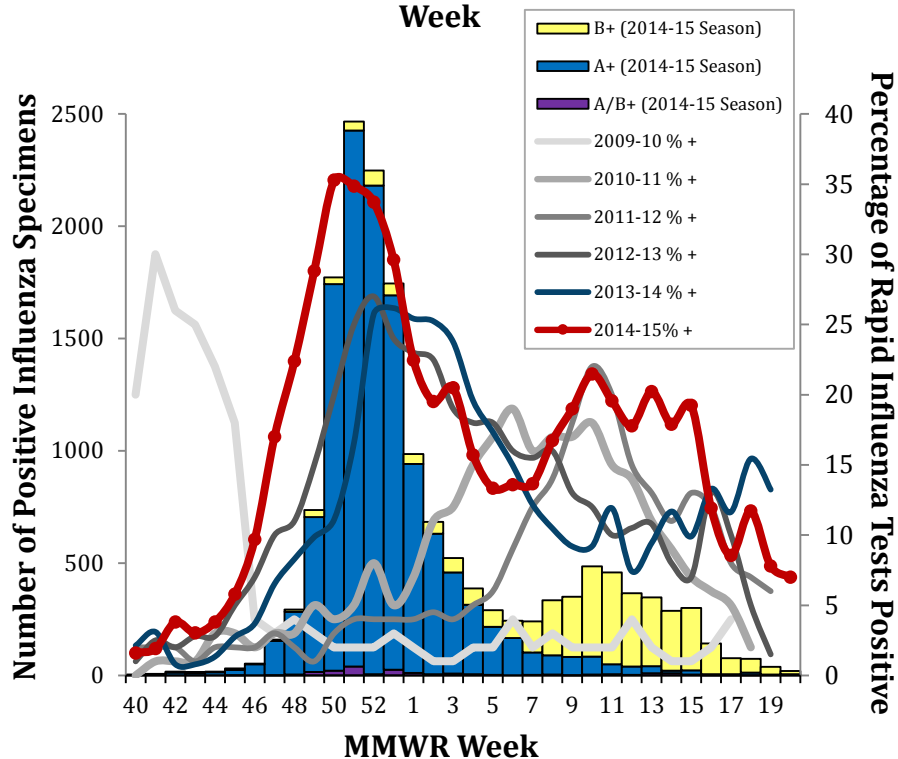
Peak % RT-PCR positive

29.65%

Laboratory Surveillance – Rapid Test

MLS Laboratories – Influenza Testing

Specimens Positive by Influenza Rapid Test, by Week

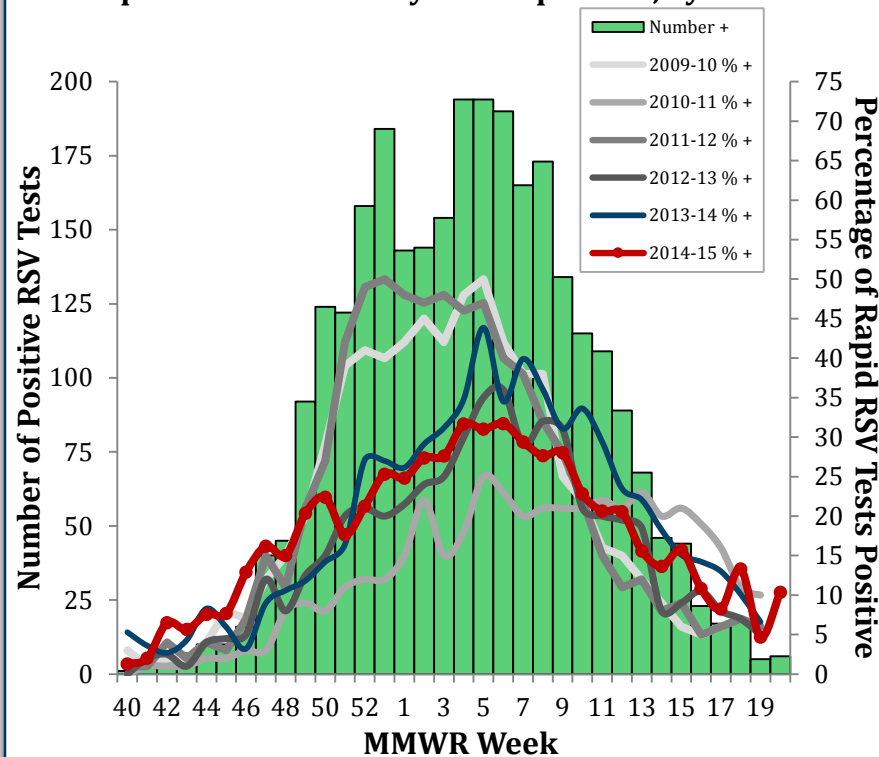


Peak % rapid
positive

35.28%

MLS Laboratories – RSV Testing

Specimens Positive by RSV Rapid Test, by Week



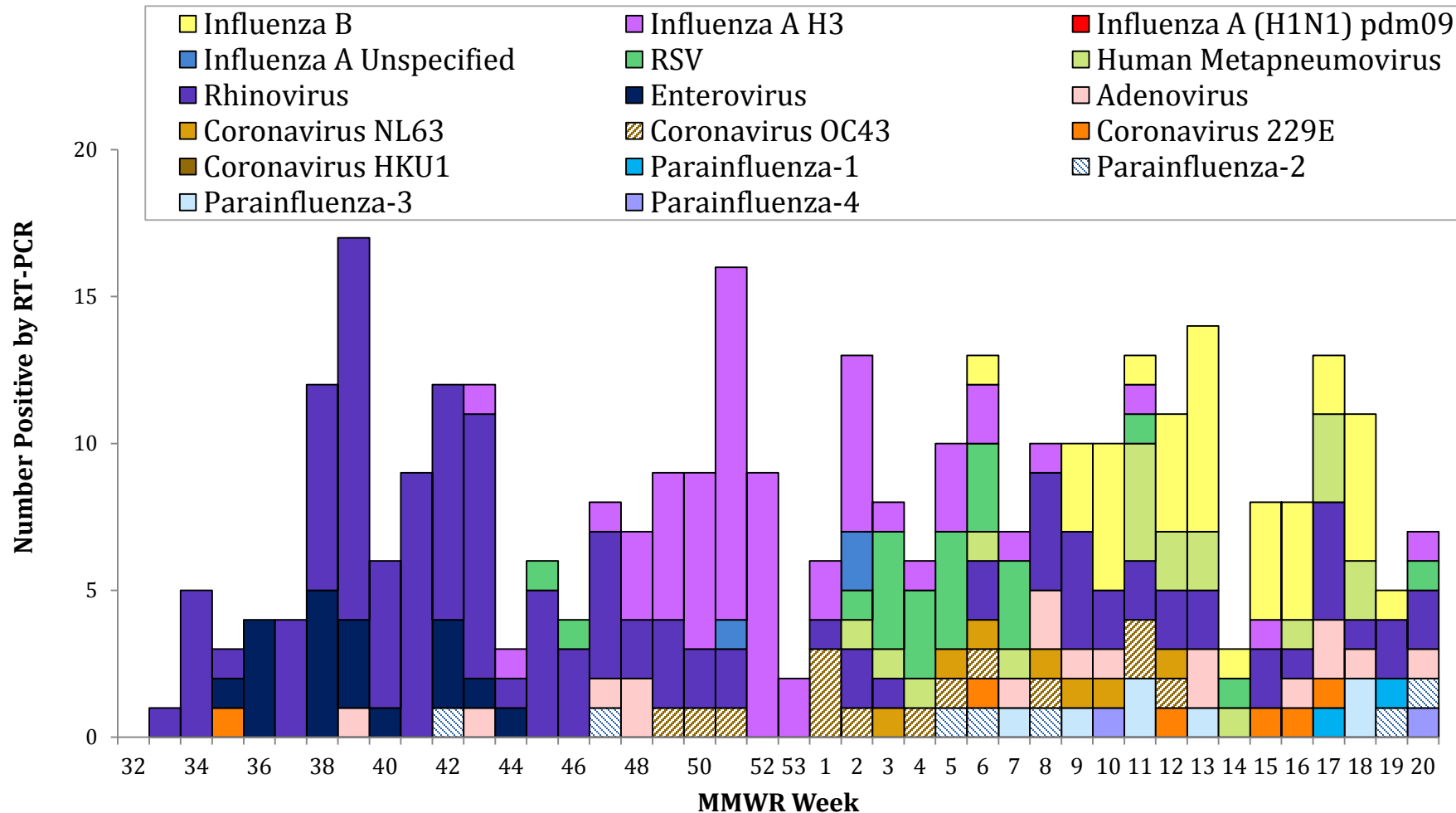
Peak % rapid
positive

31.72%

Laboratory Surveillance – PCR

MN Influenza Incidence Project (IISP) - Outpatients

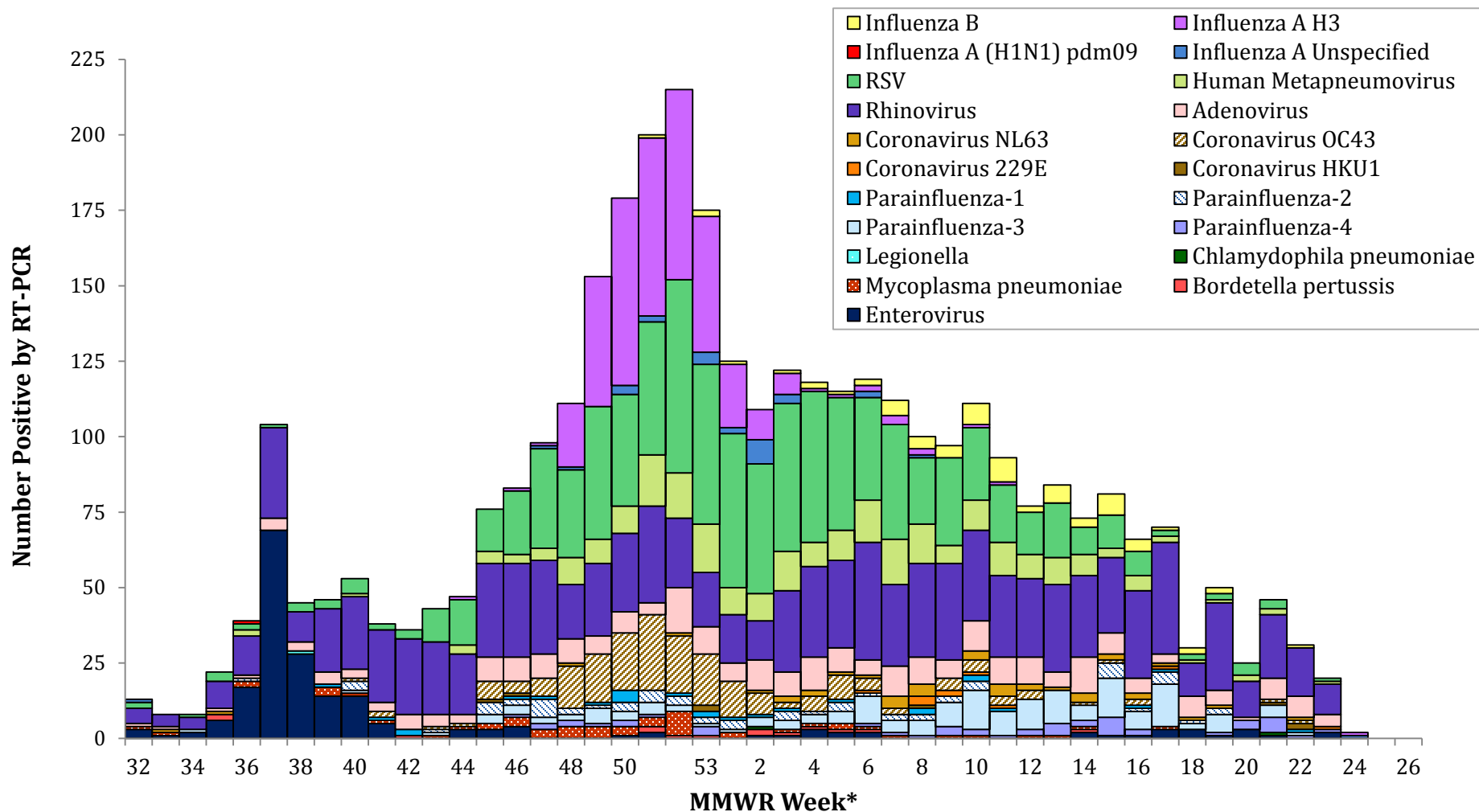
Pathogens Detected, Minnesota IISP 2014-2015



Laboratory Surveillance – PCR

Severe Acute Respiratory Illness Surveillance (SARI) - Inpatients

Positive Respiratory Pathogens by PCR, by MMWR Week



*Indicates current week-data may be delayed by 2 or more weeks