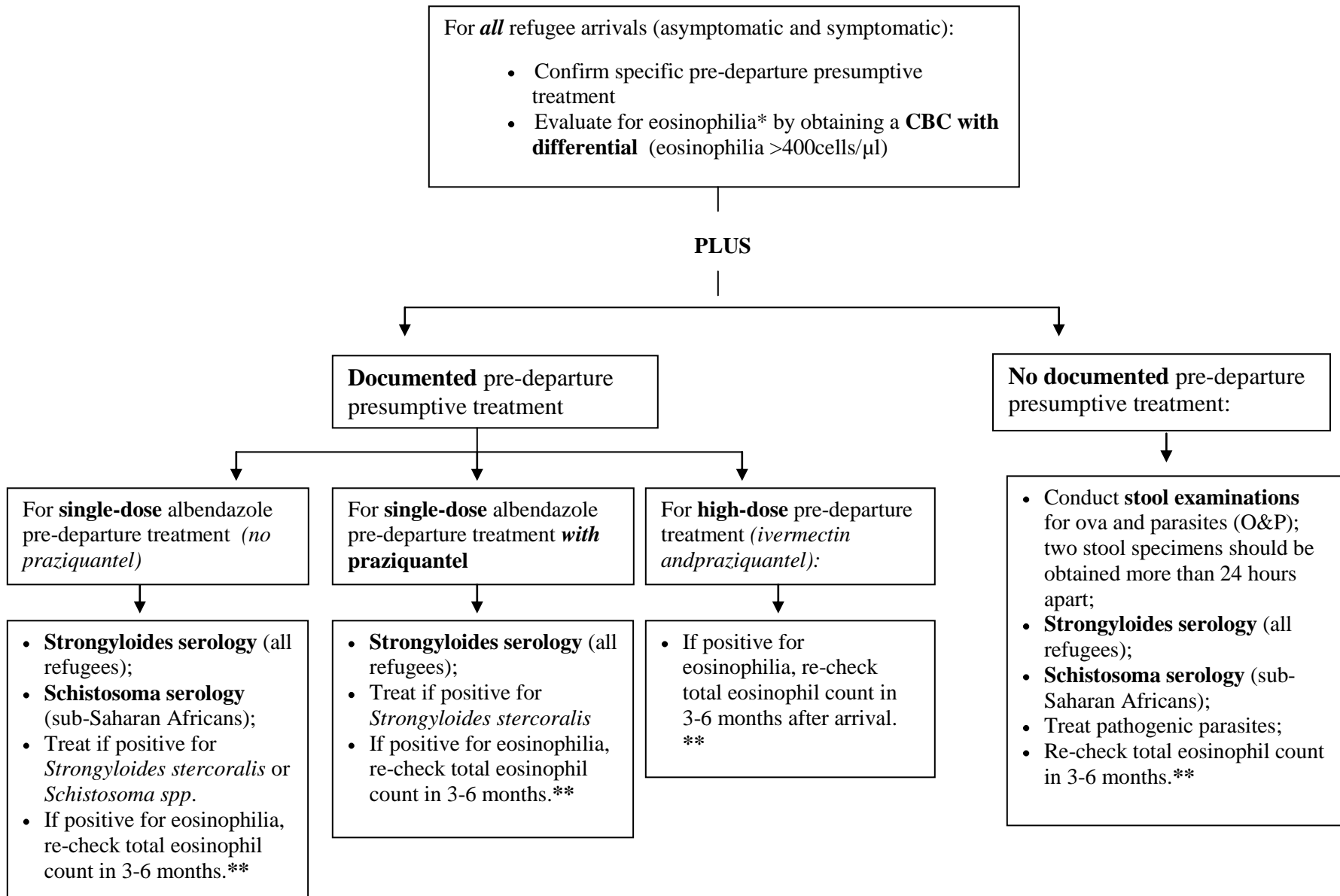


MDH Recommended Guidelines for Screening for Intestinal Parasites for New Refugee Arrivals

Figure 1. (August 5, 2010)



* Eosinophilia may or may not be present with parasitic infection; an absolute eosinophil count provides supplemental diagnostic information.

** **Persistent eosinophilia or symptoms requires further diagnostic evaluation.**