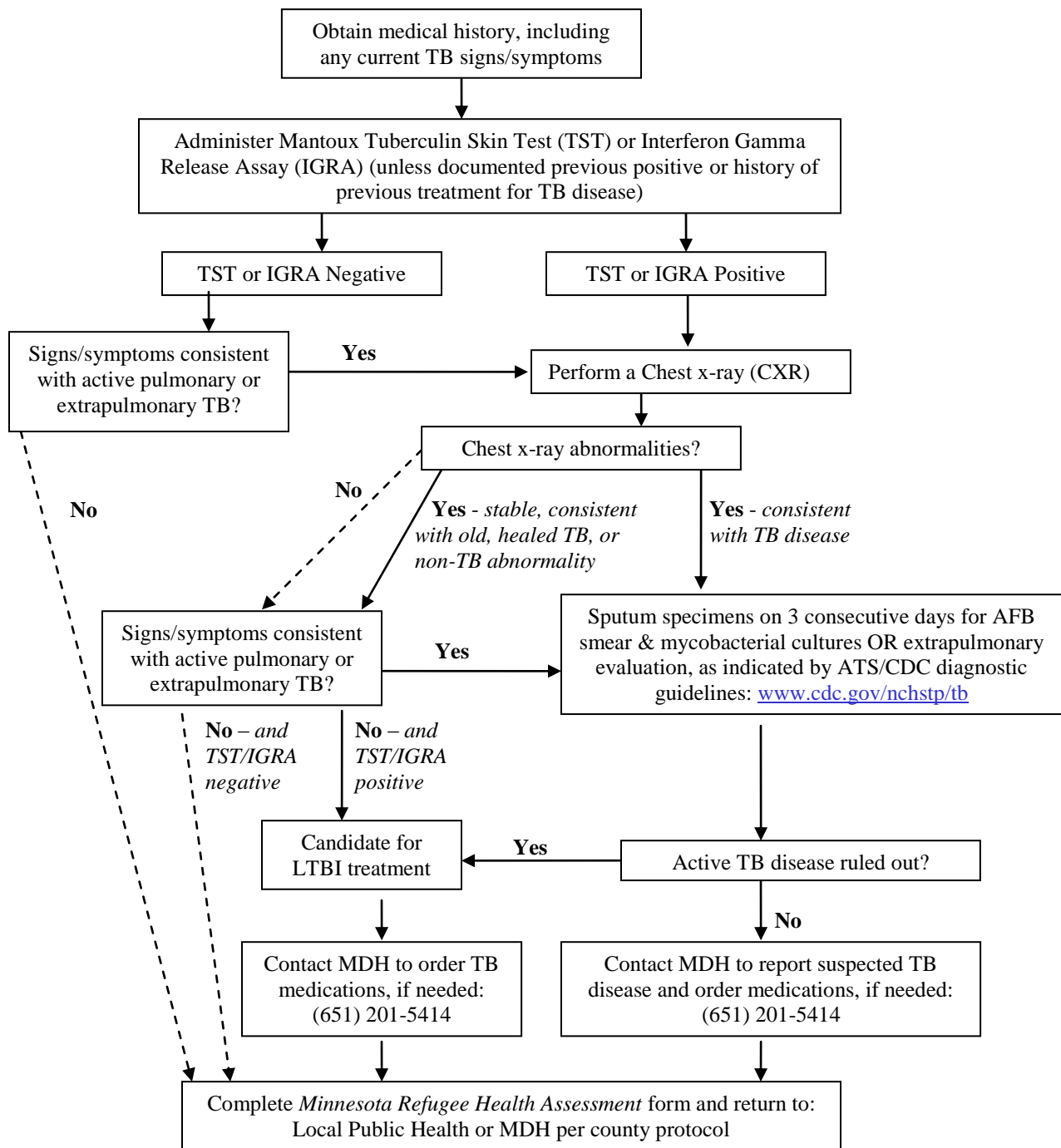


TB Assessment for Refugees and Immigrants



Additional considerations:

- For most refugees and immigrants, TST is positive if ≥ 10 mm induration. Use 5 mm cutoff for: HIV+, recent close contact to infectious TB case, arrivals with TB Class conditions (A, B1, B2), CXR with fibrotic changes, organ transplant, or otherwise significantly immunocompromised.
- CDC recommendations published in 2010 state that although a TST is acceptable, the IGRA is preferred for BCG-vaccinated persons age 5 years or older.
- For Refugee and Immigrant arrivals with a “TB Class Condition”:
 - Follow the “TB follow-up recommendations for arrivals with a TB Class condition”.
 - Complete a *TB Class Follow-up Worksheet* (instructions accompany the worksheet) and return to MDH.



Tuberculosis Program
 P.O. Box 64975
 St. Paul, MN 55164-0975
 651-201-5414 or 1-877-676-5414
www.health.state.mn.us/tb