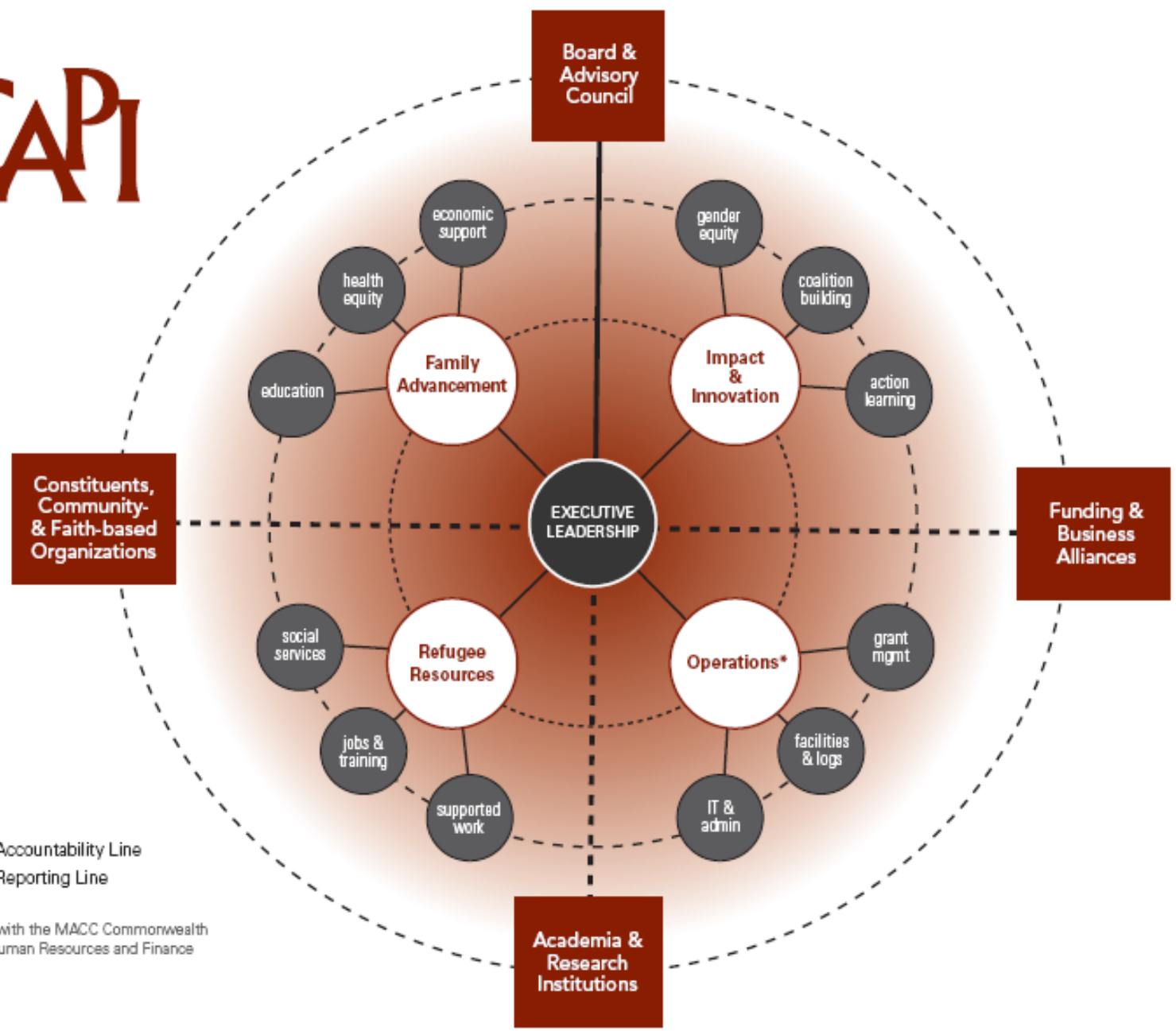


To guide refugees and immigrants in  
the journey toward self-determination  
and social equality



----- Accountability Line  
———— Reporting Line

\* Coordinates with the MACC Commonwealth to manage Human Resources and Finance



# Our Capacity

- Bilingual staffs with over 10 languages.
- Partners: Disable Immigrant Association and Southeast Asian Ministry and International Institute of Minnesota to serve new refugees.
- Strong business partners.
- Satellites: City of Eden Prairie and HUBB Center.



# PARTICIPANTS...

- 60% Asian
- 40% African
  
- 57%/ Female
- 43% Male



**92% live twice below the poverty line**



## **CORE PROGRAMS...**

- Refugee Resources Services
- Family Advancement
- Gender Equity
- Elimination of Health Disparities



# Refugee Resources Department

- Refugee Employment Services
- Refugee Social Services
- Wage Subsidy/ Work Experience Program
- Services for Seniors





# What we do to serve refugees ...

- Provide cultural specific, linguistic services and awareness among the community for ***self sufficiency***.
- Funded by Department of Human Services . We provide the following services;

## **Refugee Employment Services;**

- Employment Readiness Training
- Job Clubs/ Assistance with Job search
- Supports and Transportation needs.
- Cultural Orientation/Outreach.
- Financial Literacy Training.
- Youth Development Program.

# Refugee Social Services

- Refugee Families have stable housing.
- Refugees have adjusted their immigration status.
- Refugee families are living in safe environment.
- Refugee families are engaged in community services.
- Refugee Families are independently functioning.



# Wage Subsidy Program

- Funded by Hennepin county
- Services to 0-5 English level
- Twelve weeks Work Experience Program
- Referred by other MFIP agencies
- Provide Job Placement



# New Population in MN

- 300 Bhutanese refugees from Nepal
- Karen and Burmese from Thailand
- Iraqi ( Highly educated)
- Refugees from East Africa.

# Bhutanese refugees

- Culture
- Family dimension
- Education level
- Gender relations
- Guest Expectation
- Jobs and transportation

## Challenges

- Funds are allocated to serve only refugees, and asylee.
- Time limited; Our program can serve only refugees that are in the US less than five years.
- Services are needed for Immigrants and undocumented populations.