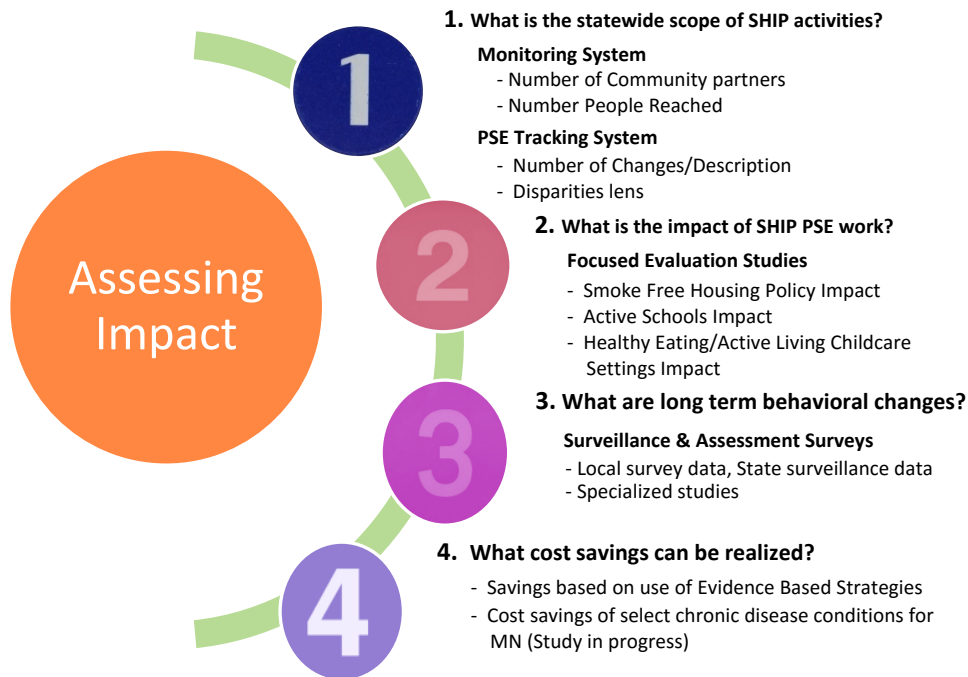


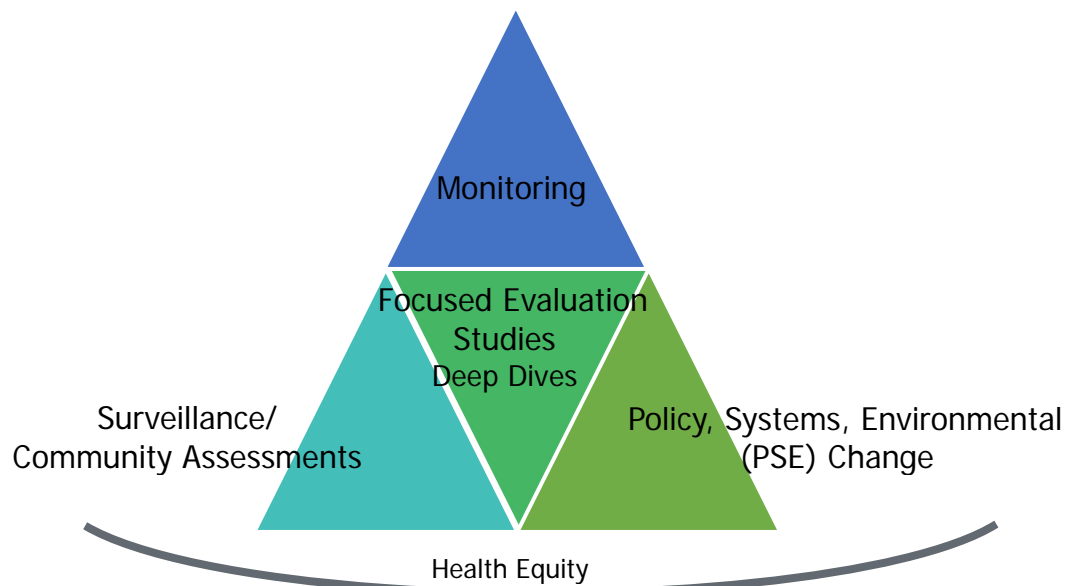
SHIP Evaluation Framework

SHIP is part of an innovative health reform law intended to improve the health of Minnesotans by reducing the risk factors that lead to chronic disease. SHIP funds local public health agencies in all 87 of Minnesota counties and 10 Tribes to work with community partners to create locally-driven policies, systems and environmental changes to increase health equity and improve access to healthy foods, opportunities for physical activity and tobacco-free environments.

Evaluation Questions and Approach



SHIP 4 Evaluation - Data Collection Framework



* IOM (Institute of Medicine). 2013. *Evaluating obesity prevention efforts: A plan for measuring progress*. Washington, DC: The National Academies Press.