

**HealthPartners®**  
Your health. Your partner.™

## Population Health

### Using Clinical Data to Improve Health

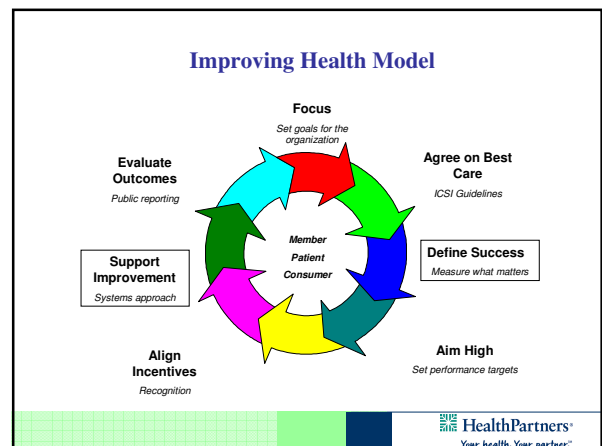
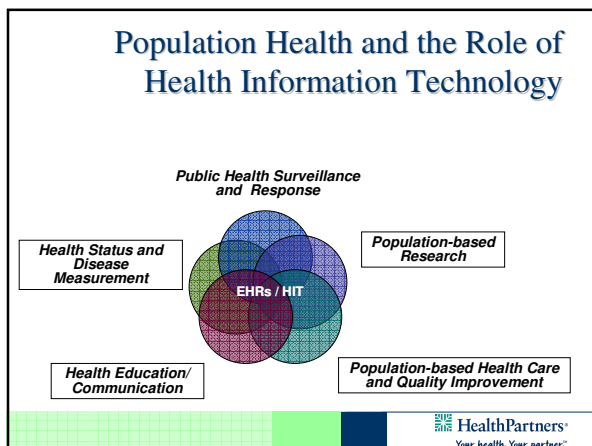
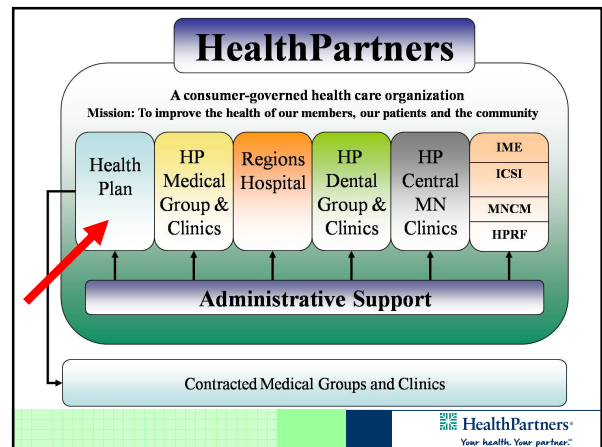
MN e-Health Summit  
Sue Gentilli  
June 26, 2008

## Overview

- Describe how we use clinical data to support population health
- Use of HIT to support measurement and reporting
- Challenges
- Opportunities

**HealthPartners®**

- Nonprofit health care organization
- Health plan, medical group and hospital
- Commercial, Medicaid, Medicare products
- 700,000 health plan members

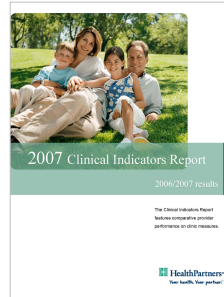


## Using Clinical Data to Improve Health

- Quality Transparency
- Pay for Performance
- Consumer Decision Support
- Benefit Design; Provider Tiering
- Registries
- Member Outreach
- Disease and Case Management
- Health Assessments

## Clinical Indicators

15th Edition



*Over a decade of collaboration, measurement innovation and performance improvement*

## Data Collection Process

### 2007 Data Collection

- 12,642 charts
- 51 provider groups
- 292 clinic sites
- 7 measures

### 2008 Data Collection

- 12,859 charts
- 63 provider groups
- 323 clinic sites
- 8 measures

## Care for Chronic Conditions

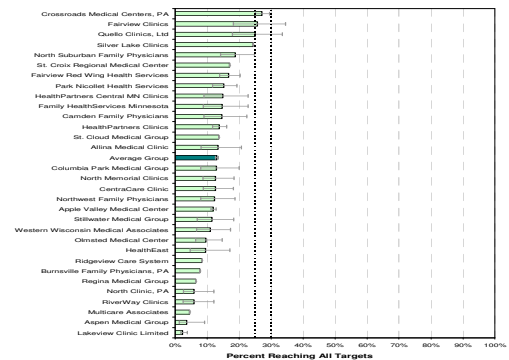
- Optimal Diabetes Care
- Optimal Coronary Heart Disease Care
- Asthma
- Depression Care

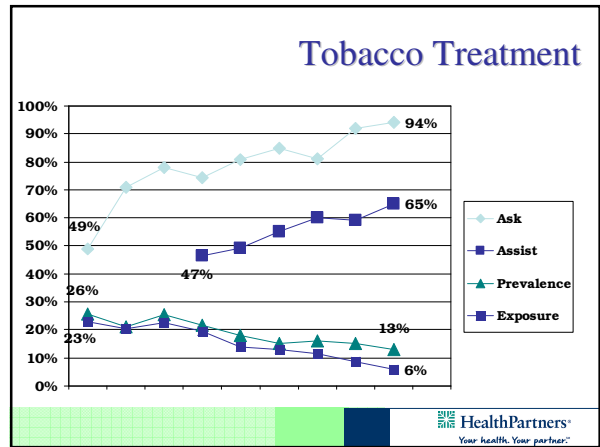
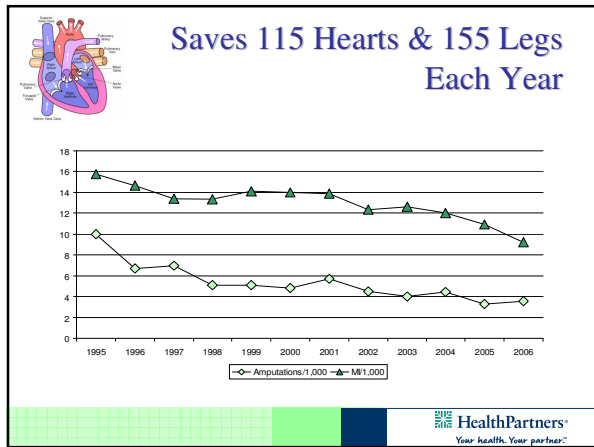
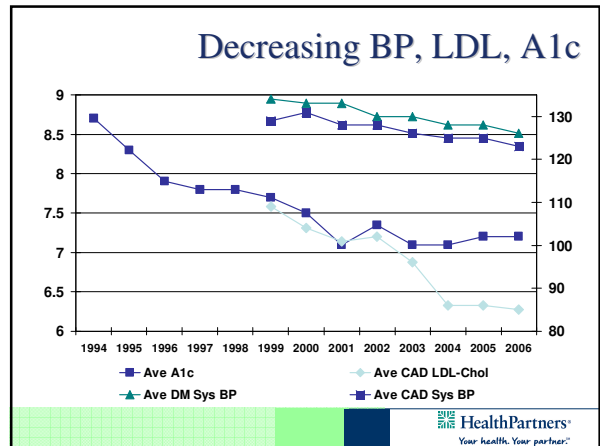
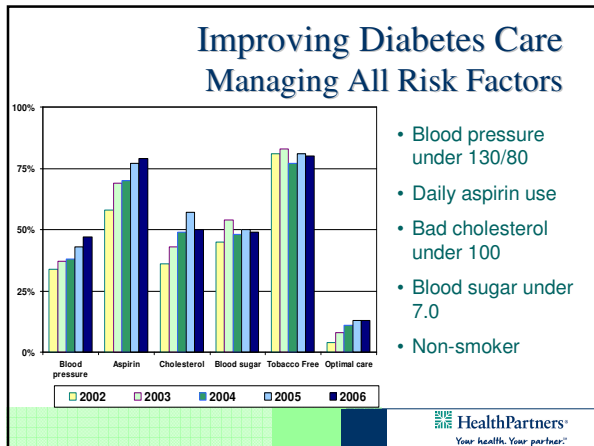
## Staying Healthy

- Preventive Services Composite
- Cancer Screenings
- Child and Teen Check Ups
- Lead Screening
- Tobacco Assessment, Assist, Prevalence
- Optimal Lifestyles
- BMI Measures
- Immunizations

### Optimal Diabetes Care

1/1/2006 - 12/31/2006

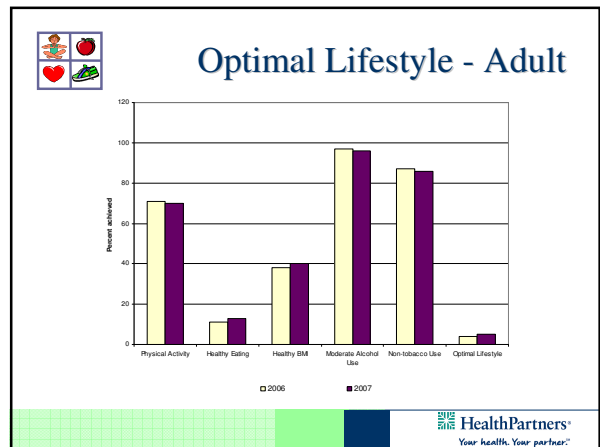


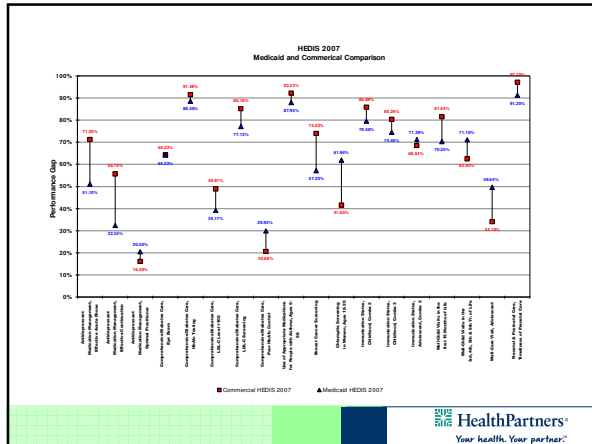


### BMI Distribution

	Healthy	Overweight	Obese
2000 Survey	44%	35%	20%
2004 Survey	40%	35%	24%
2005 Survey	40%	33%	25%
2006 Survey	38%	33%	28%
2007 Survey	40%	34%	26%

HealthPartners  
Your health. Your partner.





### Impact of Improvement 2003 - 2006

Measure	2003	2006	Members Effected
Optimal Diabetes Care	7.6%	12.7%	~1,200 more adults are optimally managed
Optimal CAD Care	30.1%	37.5%	~1,100 more adults are optimally managed
Generic Drug Use – Primary Care	52.5%	66.3%	~438,200 more generic drug prescriptions
Preventive Services - Adult	67.0%	71.9%	~20,200 more members are up to date
Preventive Services – Child & Adolescents	55.5%	67.9%	~21,200 more members are up to date
Tobacco - Assessment	80.7%	94.5%	~79,800 more members have documented tobacco status
Tobacco Assist	59.8%	66.7%	~5,400 more adults assisted with tobacco cessation
BMI Assessment – Adult	17.8%	57.6%	~162,900 more adult members have documented BMI

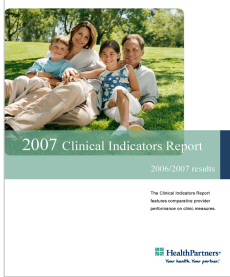
- ### Use of HIT to Support Measurement
- EMR Data Feed
  - MIIC Registry Data
  - MDH Lead Data
  - DHS Enrollment Data
  - MN Community Measurement direct data submission
  - Provider self-report

- ### Challenges
- EMR applications create new challenges for quality measurement and reporting:
- Data filters
  - Security
  - Dates
  - Access to selected records

- ### Challenges (cont'd)
- Practice site customization
  - Transition from paper to electronic
  - Attribution of members
  - Integration of information
  - Provider engagement

- ### Opportunities
- Consider retrospective data collection requirements in EHR system design
  - Create standard protocols for scanning of information
  - Standardize EHR use across practice sites
  - System security; allow access to selected records

# Clinical Indicators Publication



Available at:

[www.HealthPartners.com/quality](http://www.HealthPartners.com/quality)

