

Session 3: Connecting for Meaningful Use: “Live” Demonstrations from MN Health Information Organizations




HIE-Bridge™: Connecting for Meaningful Use

Presented by Cheryl M. Stephens, MBA, PhD

*MN eHealth Summit 2010
June 17
Northland Inn*

Community Health Information Collaborative

Our mission is to provide regional access and utilization of health care information through collaboration.



CHIC is a nonprofit collaborative of hospitals, clinics, long-term care facilities, tribal health organizations, higher education institutions and public health departments in Northeastern Minnesota. CHIC leverages information technology and collaborative relationships to help members improve care and save precious healthcare dollars through the following programs.


CHIC: Building bridges to quality healthcare.

Emergency Preparedness	Health Info Exchange	Immunization Registry	USAC Administration
<p>CHIC serves as the Administrative Regional Healthcare Preparedness Coordinator for 16 hospitals in seven counties in northeastern Minnesota. Coordination includes medical services, mental health services and volunteer recruitment that would be required in an emergency.</p> <p>CHIC's efforts were recognized in July 2008 by a National Congress on Health Systems Readiness, hosted jointly by the American Medical Association and the Centers for Disease Control and Prevention.</p> <p>In addition, CHIC coordinated the volunteer efforts associated with the serious wildfires experienced in the early summer of 2007 near the Gunflint Trail in far northeastern Minnesota.</p> <p>Our partners include hospitals, state and local public health and tribal health agencies, homeland security, emergency medical services, long-term care facilities, clinics and public safety agencies.</p>	<p>HIE-Bridge™ is a web-based network that speeds up access to patient medical information by connecting doctors, nurses, and emergency staff to the facilities holding remote medical records.</p> <p>Benefits of HIE-Bridge™</p> <ul style="list-style-type: none"> •Links hospitals, clinics, and long-term care facilities across upper Midwest to quickly find location of medical records •Improved quality of care as a result of transfer of electronic medical record/CCD documents •State-of-the-art security to protect patient privacy •Access to the location of remote medical information can help reduce unnecessary medical re-testing •Access can reduce prescription errors and alert providers to patient allergies •Designed in conjunction with the Nationwide Health Information Network (NHN) as a participant in the 2008-2009 trial implementations and demonstrations 	<p>The Minnesota Immunization Information Connection (MIIC) is a confidential, computerized network of shared immunization records. It provides clinics, schools, and parents with accurate, complete, and up-to-date immunization records.</p> <p>MIIC offers:</p> <ul style="list-style-type: none"> •Clinical decision support on what antigens and vaccine products are optimally due for given patient. •Reduced medical errors related to over- and under-immunization •Improved immunization rates through reminder and recall notices •Assurance that you will know about shots given to your patients in other settings •Aids schools by providing complete accurate immunization records for children enrolling in Early Childhood Family Education (ECFE) and other preschool programs. 	<p>The Rural Health Care Program of the Universal Service Fund (USF), which is administered by the Universal Service Administrative Company (USAC), is a support program authorized by Congress and designed by the Federal Communications Commission (FCC) to provide reduced rates to rural health care providers (HCPs) for telecommunications services and Internet access charges related to the use of telemedicine & tele-health.</p> <p>For health care providers this means that support is available for telecommunications services and monthly Internet access charges used for the provision of health care. CHIC provides administrative assistance in document preparation between USAC and the healthcare providers for this program.</p>

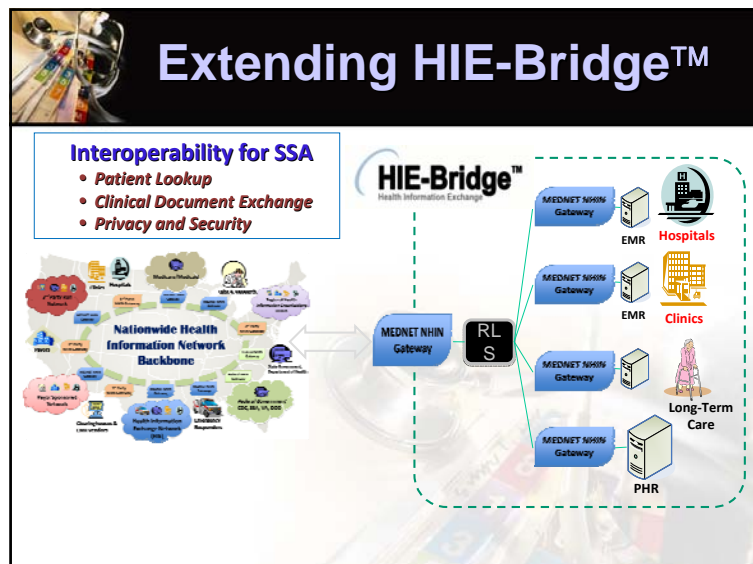


Agenda

- Progression of CHIC Health Information Exchange projects
 - Secure E-mail
 - Web Portal
 - HIMSS / GSA Single Sign-on
 - RLS
- Nationwide Health Information Network and Social Security Administration
- Health Information Exchange:

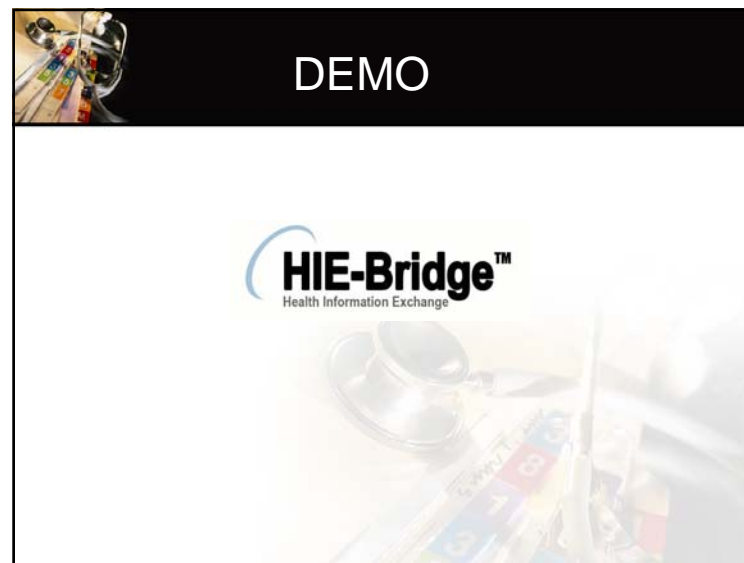



Nationwide Health Information Network and Social Security Administration Electronic Submission of Disability Claims



- ## Core Services
- **Look-up and retrieve data**
 - ✓ Summary record and other available data from locations in EHRs and PHRs
 - **Deliver data**
 - ✓ Summary record to meet emergent care needs
 - **Exchange consumer preferences**
 - ✓ Decisions about participation in electronic exchange of their data
 - ✓ Workable permissions for who can access what
 - **Support delivery of data for population uses**

- ## Key Features
-
- **Quick access to demographic information on patients**
 - **Secure – requires PKI digital certificate authentication with 2-factor security**
 - **Includes sophisticated Patient Privacy and Consent Management**
 - ✓ Conforms to recent Minnesota legislation
 - **Fast – under 5 second response times**
 - **Scalable – no limit to number of participants**
 - **Distributed searches - No central database**





HIE-Bridge™



➤ **Participation Overview**

1. **Data Exchange and Support Agreement**
2. **Consent Management**
 - ✓ Consent Language
 - ✓ Opt-Out Procedures
 - ✓ Opt-Out Revocation
 - ✓ Training for Registration Staff
3. **Auditing**
 - ✓ Privacy and Security Officers
 - ✓ Breach Notification procedures



HIE-Bridge™



➤ **Communication and Training**

- ✓ Registration Brochure
- ✓ Newsletter Copy
- ✓ Press Release
- ✓ Training Tutorials
- ✓ Frequently Asked Questions



HIE-Bridge™

In an emergency, locating your medical information is critical.



During high stress times, you should not have to worry about where to find your medical information.

HIE-Bridge™ can help



A Minnesota Health Information Exchange
www.hiebridge.org

HIE-Bridge™ FAQ's

What is HIE-Bridge™?
 A system that speeds up locating your medical information for doctors, nurses and emergency staff from regional facilities.


How will HIE-Bridge™ benefit me?
 It will let doctors and nurses find where your tests and other health information is stored across the region. With this, they can make better and faster decisions for your care.

Is the system secure?
 Yes! State of the art security protects your privacy and prevents unauthorized access to your medical records.

For more information, visit www.hiebridge.org

Additional Information:

Opt-Out
 You may opt-out from the HIE-Bridge™ network. If you choose to remove your information from HIE-Bridge™, it will not be available in the event of an emergency or disaster. Please speak to your provider if you have questions about HIE-Bridge™ or opt-out. If you opt-out and then change your mind, you may opt back in at any time. Just talk to your healthcare provider.



HIE-Bridge™

Thank you!

Cheryl M. Stephens, MBA, PhD
 Executive Director
cstephens@medinfosystems.org

Community Health Information Collaborative
 218.625.5515