



# Health Care Homes: Performance Measurement & Reporting



Questions: [hch-support@mncm.org](mailto:hch-support@mncm.org)

# Webinar Agenda

- Introduction/Welcome
- HCH-Data Submission Background
  - Health Care Homes Outcomes workgroup
  - Measure Recommendations
- HCH-Optimal Vascular Care Measure
  - Data Collection Guide
    - » Changes to the OVC measure
    - » Data Submission
    - » Questions
- Next steps

# Background: HCH Measurement

- Overarching goal of HCH measurement:

The HCH program strives to achieve the goals of the Institute for Healthcare Improvement's Triple Aim: 1) improvement in patient health; 2) quality of patient experience; and 3) measures related to cost effectiveness and services

- Logistical need for measurement

1. HCH program evaluation
2. HCH annual recertification

- HCH Performance Measurement Workgroup

1. Comprised of community stakeholders
2. Provide recommendations around performance measurement

# HCH Measurement Workgroup

- Shape outcomes measurement strategies based on the HCH rules and outcomes work of ICSI.
  - \* **Clinic population based measurement**
  - \* **Risk adjustment for outcomes measures**
  - \* **Measurement over time**
  - \* **Variance for superior outcomes**
- Identify how outcomes measurement decisions should be made
- Make recommendations on how HCH outcomes measurement could work within the broader statewide reporting structure

# HCH Performance Measurement Work Group

## Recommendations: Follow the IHI Triple Aim

### Patient Health Measures

- 1) Optimal Vascular Care
- 2) Optimal Asthma Care

### Patient Experience of Care

- 1) Standard survey throughout MN
- 2) Measure HCH specific domains

### Cost - Effectiveness Measure

- 1) Population based health measures
- 2) Aligned with the other statewide measurement initiatives

## HCH Measurement Recommendations cont.

- Stratify data by specific HCH data elements
  - » Care Coordination
  - » Risk Tier
  - » health insurance status, gender, age, race/ethnicity, socioeconomic status (SES)
- Minimize data collection burden
- Process for selecting future HCH measures

# HCH-Optimal Vascular Care\*

## Numerator components:

1. Blood pressure is less than 130/80 mmHg
2. LDL is less than 100mg/dl
3. Patient is smoke free
4. Patient is on aspirin within the measurement period

## Denominator:

1. Patient is between 18-75 years old
2. Patient had 2 face-to-face visits in the past 2 years coded with IVD, ICD-9
3. Must have 1 face-to-face visit during the last 12 months for any reason

\*This is a summary version of the measure, for the full specifications please Appendix A of the HCH-Optimal Vascular Care Guide. Also, please note this is the same measure used for the Statewide Quality Reporting and Measurement System (SQRMS).



# HCH OVC: Measure Basics

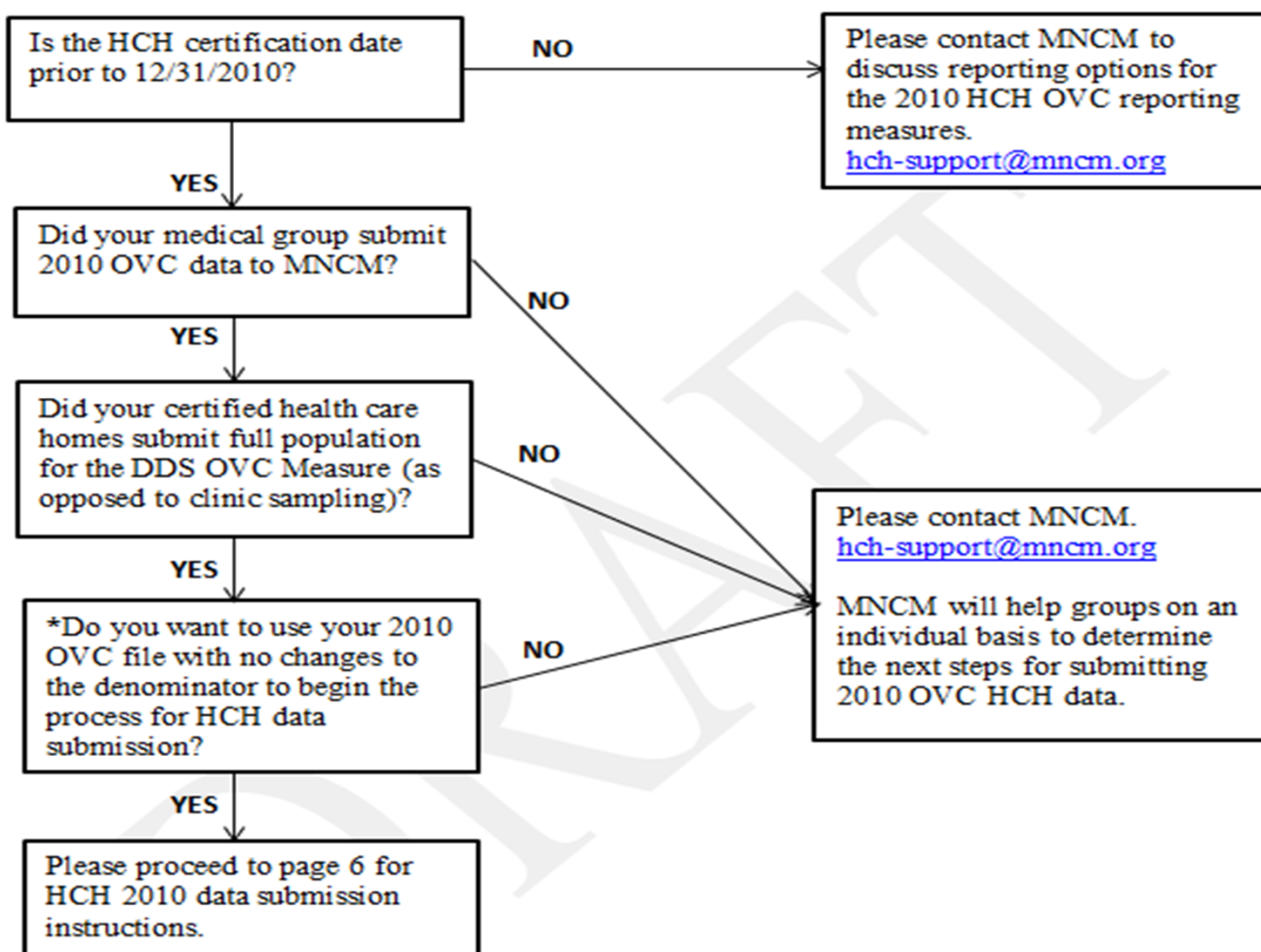
Question:	Answer:
Who is required to submit data?	Health Care Homes Certified prior to 12/31/10 who meet the measure requirements.
What is the reporting period?	Optional. Groups may choose to submit data from the date of certification forward or use the reporting period (1/1/10 - 12/31/10)
What changes have been made to the Optimal Vascular Care measure?	Population identification is the same as the 2010 OVC measure previously submitted to MNCM. Additional HCH data elements have been added to the end of the OVC data file.
When does data submission start?	There is a separate HCH data portal that will open 5/15/11

# What makes HCH data submission unique?

- Health Care Homes (HCH) data will not be publicly reported
- HCH data will be used during the recertification process and future benchmarking
- HCH results will be displayed at the provider level within the new HCH data portal
- New HCH specific data elements have been added to the end of the current Optimal Vascular and Asthma Care measure specifications

# Step 1: Determine your reporting process

## Decision Tree for Health Care Homes 2010 Optimal Vascular Care Data Submission



## Step 2: Login & Verify HCH providers

- After receiving your login credentials to the HCH data portal, review and edit or verify/submit your providers.
  - » MNCM will upload list of HCH providers received from MDH
  - » Verify the NPI and name of the provider, also any questions about whether or not a provider is certified will be handled during this step.

## Step 3: HCH Data Narrative & Definitions

- This replaces the traditional denominator certification process if your HCH submitted 2010 OVC data.
- Review new data elements and definitions
- The narrative is a brief description of the plan or process used to extract the HCH specific data elements.
  - MNCM will provide a downloadable narrative template in the portal
  - MNCM will review/approve process OR follow up with questions



# HCH Data Elements: Definitions

Health Care Home Field	Definition
Patient Health Care Home Tier level	<p>Please see the Minnesota Department of Health's <i>Care Coordination Tier Assignment Tool, Version 1.0</i> for directions on how to assign a complexity tier to each patient in your HCH OVC file. See appendix C of the HCH Optimal Vascular Care Guide OR follow the link below:</p> <p><a href="http://www.health.state.mn.us/healthreform/homes/payment/HCHComplexityTierTool_March2010.pdf">http://www.health.state.mn.us/healthreform/homes/payment/HCHComplexityTierTool_March2010.pdf</a></p>
Health Care Home Care Coordination	<p>Care coordination is a team approach that engages the participant, the personal clinician or local trade area clinician, and other members of the health care home team to enhance the participant's well-being by organizing timely access to resources and necessary care that results in continuity of care and builds trust. (The MDH &amp; DHS adopted rule related to health care homes adopted on January 11, 2010).</p>
Mental Health modifier	<p>This means the patient has an active diagnosis of schizophrenia, bipolar disorder, major depression or borderline personality disorder. The Minnesota Department of Health's <i>Care Coordination Tier Assignment Tool, Version 1.0</i> provides instruction for determining whether or not a patient qualifies for a mental health modifier. The definition of mental health modifier comes from <i>Minnesota Statute 245.462, subdivision 20</i>. See appendix D.</p>

## Step 4: Preparing the HCH OVC file

- Make a copy of your final 2010 OVC .xls file from your network directory
- Add the new columns to your work sheet

Column Identification	Header Label	Excel Format
AE	Patient Health Care Home Tier level	Number
AF	Patient assigned Health Care Home Primary Care Provider	Number
AG	Patient accepted/refused Health Care Home Care Coordination?	Number
AH	Date patient started Health Care Home care coordination	Date (mm/dd/yyyy)
AI	Mental Health modifier for Health Care Home patients	Number

\*This step will vary depending on participation the in Statewide Quality Reporting and Measurement System

Questions: [hch-support@mncm.org](mailto:hch-support@mncm.org)

# Data Submission Steps

These steps will vary depending on the process used by each HCH to update their OVC file, the capability of different information systems, and participation the Statewide Quality Reporting and Measurement System.

Step 5: Data Submission

Step 6: HCH quality checks

Step 7: Upload Data

Step 8: Review results

# Overview: process and timelines

See Pg. 13 of the HCH Optimal Vascular Care Guide.



# Next Steps:

Step	Timeline	Action taken by
Decide HCH reporting process	4/27/11 – 5/13/11	Health Care Home (MNCM will assist groups as needed)
Send portal login instructions	5/9/11 – 5/13/11	MNCM
MNCM hosts a HCH data user group call.	Mid May. details forthcoming	MNCM
Verify HCH providers	5/15/11- no end date set	Health Care Home
Data Submission begins	5/15/11 – no end date set	Health Care Home
Asthma Measure User Group Call	End of May/beginning of June -details forthcoming	MNCM

Questions: [hch-support@mncm.org](mailto:hch-support@mncm.org)

# Q&A

## Available Measurement Resources:

1. MNCM will be hosting user groups calls for each HCH measure (dates and times TBD)
2. Email: [hch-support@mncm.org](mailto:hch-support@mncm.org)
3. Webinar slides and a link to recording will be sent in a follow up email



# Thank you for participating

HCH data submission questions  
please contact: [hch-support@mncm.org](mailto:hch-support@mncm.org)

Questions: [hch-support@mncm.org](mailto:hch-support@mncm.org)