



# *What's Happening in Your County?*

Making Health Data Easier  
to Access, Understand and  
Use

Navigating [www.sumn.org](http://www.sumn.org)

Ray Lewis MPH, [rlewis@miph.org](mailto:rlewis@miph.org)

Presented by the Minnesota Institute of Public Health,  
on behalf of the

Minnesota State Epidemiological Outcomes  
Workgroup (SEOW)

# Background

- 65 states, tribes and territories have a State Epidemiological Outcomes Workgroup (SEOW)
- Funded by the Substance Abuse and Mental Health Services Administration (SAMHSA)
- Based on Strategic Prevention Framework (SPF)
- Goal = data driven decision making

# Minnesota SEOW

- MN Dept. of Human Services
- MN Dept. of Health
- MN Dept. of Education
- MN Dept. of Public Safety
- MN Dept. of Corrections
- MN Institute of Public Health
- Wilder Research

# Website includes:

- Data sources
- Search options
- Maps, graphs, and charts
- Tools
- Contact information and feedback
- Webinar recorded on how to navigate [www.sumn.org](http://www.sumn.org)

# Minnesota Epi Profile

- Alcohol, tobacco and other drug (ATOD) use and consequence indicators
- Data by state, county, and ATOD prevention region
- For use in assessment, planning, priority setting, evaluation, reporting, and grant writing

# Minnesota Prevention Resource Center

A Project of the MIPH

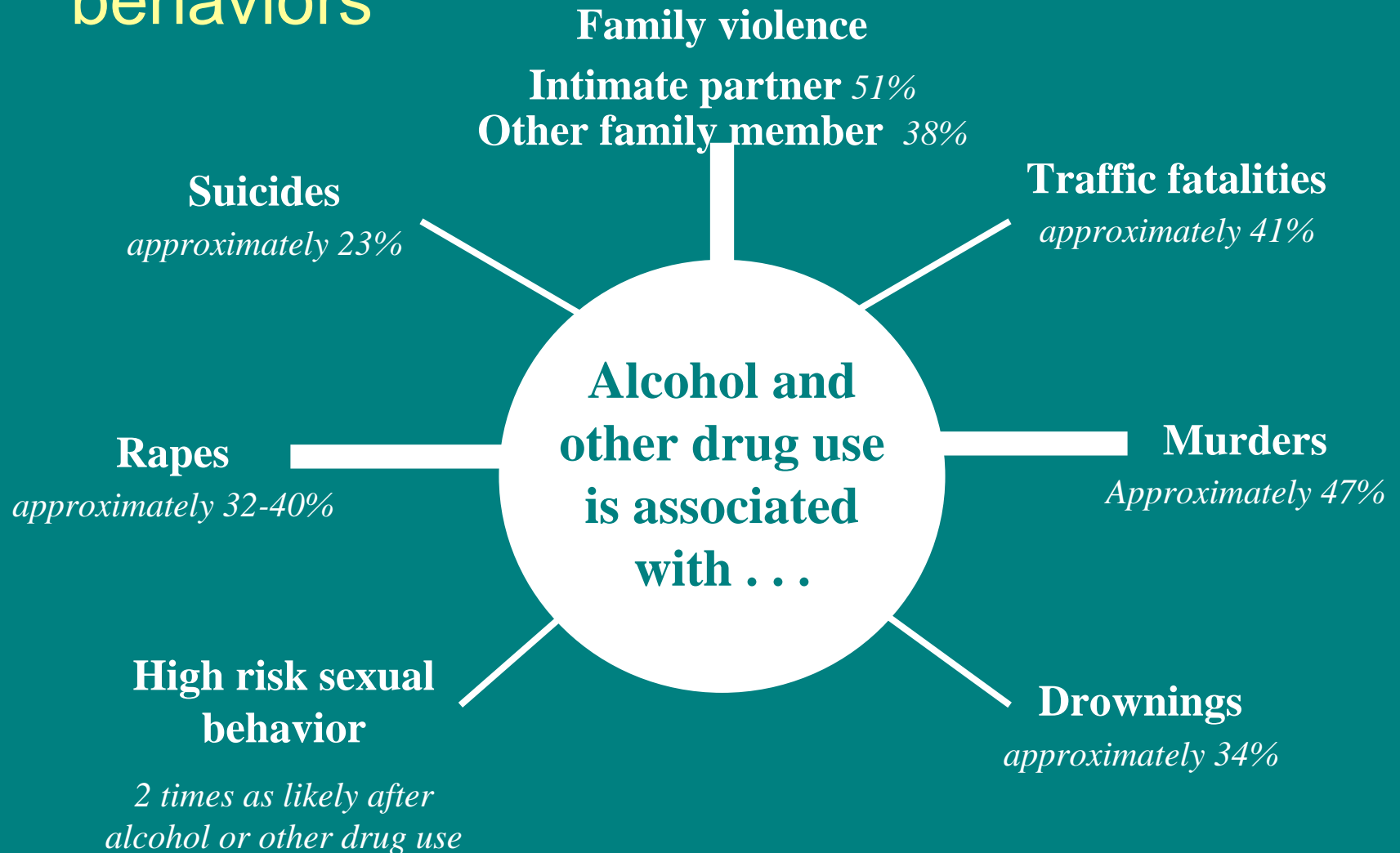


Kevin Spading LICSW LADC

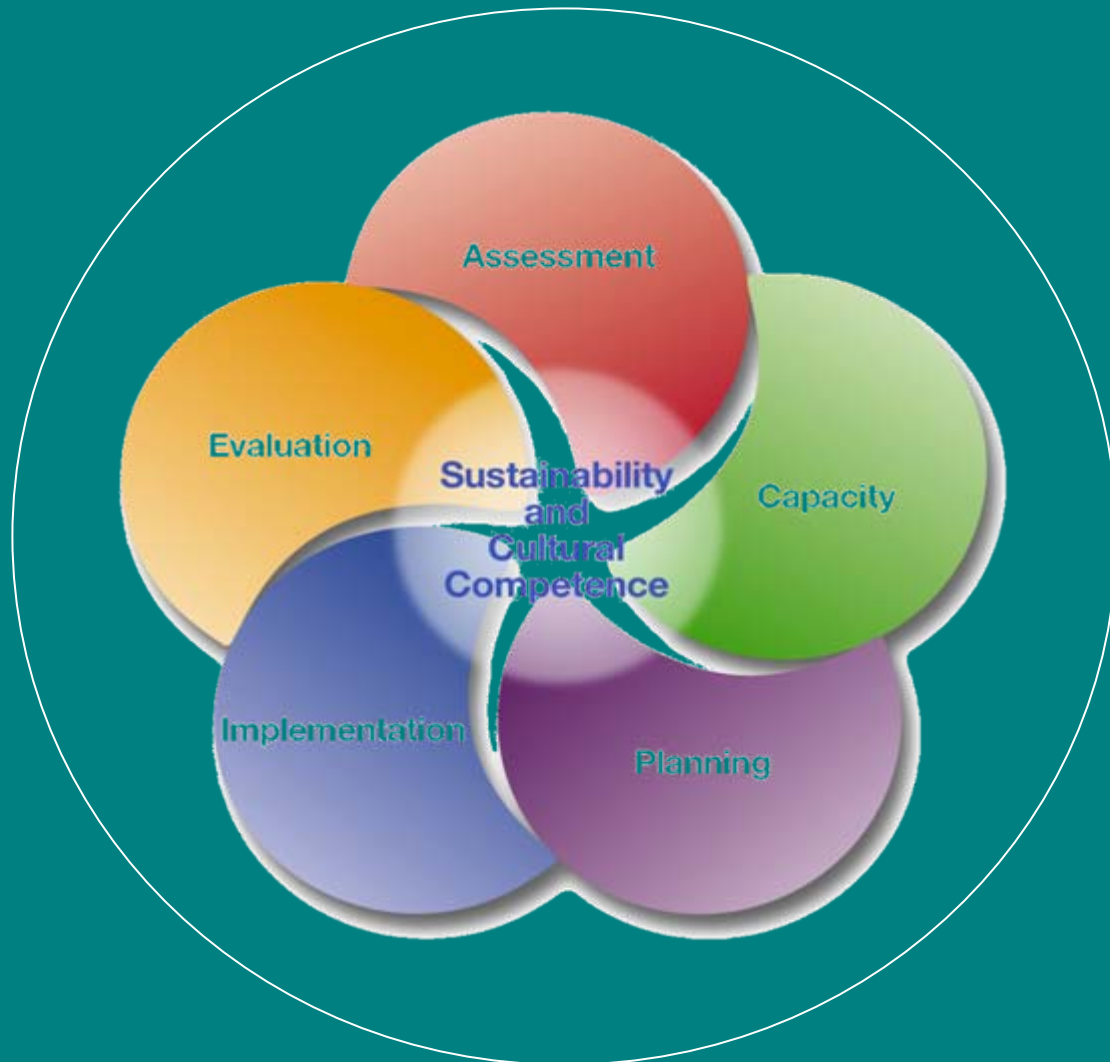
[www.emprc.org](http://www.emprc.org)

763-427-5310 or 1-800-782-1878

# Relationship of alcohol and other drug use to a variety of other high-risk behaviors



# SAMHSA Strategic Prevention Framework



# Case Example:

- Making Health Data Easier to Access, Understand and Use
- Past:
  - CLUES
- Current:
  - Walking the Talk:

# Epi Profile Products

- 2007 and 2008 State Epi Profiles
- Community Profiles
  - by county in Fall 2007
  - by race/ethnicity in Fall 2008
- Fact Sheets in Fall 2008
  - by location
  - by topic
  - by demographic
- [www.sumn.org](http://www.sumn.org) (interactive, on-line Epi Profile)

***Let's go...!***



## Substance Use in Minnesota: A Minnesota State Epidemiological Profile

The Minnesota State Epidemiological Profile was created under the supervision of the State Epidemiological Outcomes Workgroup (SEOW) with financial assistance from the Substance Abuse and Mental Health Services Administration's (SAMHSA) Center for Substance Abuse Prevention (CSAP).

The Profile has been created to summarize and characterize consumption patterns and consequences related to the use of alcohol, tobacco and other drugs (ATOD) in Minnesota.

[Substance Use in Minnesota: A State Epidemiological Profile, March 2008](#)  
[PDF 2MB]

Use Data by Location to view Population Snapshots.

[How to Use This Site](#)

### Charting and mapping features are now live!

Visitors may now create chart and map reports in the Data By Topic section of the site.

#### Data By Location



Select a county to view statistics

[Counties](#)

[Regions](#)

[State](#)

#### Data By Topic

Select a category and subcategory below to see how the indicator compares across regions of the same type.

- Alcohol
- Tobacco
- Other Drugs
- All Substances

## By Demographic

### Youth:

- SNAPSHOTS on Minnesota Youth. <http://www.ojp.state.mn.us/newsletters/snapshots/2007-09.htm>

### Race/Ethnicity:

- Speaking for Themselves: A survey of Hispanic, Hmong, Russian, and Somali immigrants in Minneapolis-Saint Paul (2000) from the Wilder Research Center <http://www.nfg.org/otherpubs/SpeakingForThemselves.pdf>
- International Institute of Minnesota [http://iimn.org/index.asp?Type=B\\_BASIC&SEC={82EACF9-200B-4561-AEA0-224F40F2810D}](http://iimn.org/index.asp?Type=B_BASIC&SEC={82EACF9-200B-4561-AEA0-224F40F2810D})
- Minnesota International Center <http://www.micglobe.org/>
- Tobacco Use in Minnesota: Perspectives from Latino Communities. Blue Cross and Blue Shield of Minnesota, Comunidades Latinas Unidas en Servicio, Minnesota Partnership for Action against Tobacco, March 2006 [http://www.preventionminnesota.com/objects/pdfs/Latino\\_FullReport\\_Final.pdf](http://www.preventionminnesota.com/objects/pdfs/Latino_FullReport_Final.pdf)
- Populations of Color Health Status Report, Minnesota Department of Health. <http://www.health.state.mn.us/divs/chs/POC/>
- SHAPE 2002: Racial and Ethnic Data Book, Survey of the Health of Adults, the Population, and the Environment. <http://wwwa.co.hennepin.mn.us/images/HCIInternet/Static%20Files/100088817RacialEthnicDatabook20030423.pdf>

### African-American

- Minnesota African American Tobacco Education Network <http://www.state.mn.us/portal/mn/jsp/content.do?id=-536887961&agency=CBM>
- African American Community Epi Profile <http://www.sumn.org/downloads/AfricanAmericanCommunityEpiProfile.doc>

### American Indian/Alaska Native:

- American Indian SUMN Fact Sheet <http://www.sumn.org/downloads/AmericanIndianSUMNFactSheet.pdf>
- American Indian/Alaska Native Community Epi Profile <http://docs.sumn.org/AmericanIndianCommunityEpiProfile1.doc>
- American Indian Community Tobacco Project <http://www.epi.umn.edu/research/aictp/publications.shtml>
- Minnesota Indian Women's Resource Center <http://www.miwrc.org/resources.html>
- Reducing Tobacco Use Among Pregnant American Indian Women Grant # RC 2002-0007, Minnesota Partnership for Action Against Tobacco, Indigenous People's Task Force. [http://www.communityresearchworks.com/Toolbox/CommunityBasedResearch/Community\\_Research\\_Report.pdf](http://www.communityresearchworks.com/Toolbox/CommunityBasedResearch/Community_Research_Report.pdf)
- Great Lakes Inter-Tribal Epidemiology Center. <http://www.glitc.org/epicenter/index.html>

### Hispanic/Latino:

- Comunidades Latinas Unidas En Servicio – CLUES – Latino Resource Center [http://www.clues.org/lrc\\_pages/lrc.htm](http://www.clues.org/lrc_pages/lrc.htm)
- Hispanic/Latino Community Epi Profile <http://docs.sumn.org/HispanicLatinoCommunityEpiProfile.doc>

### Hmong:

- Hmong Cultural Center <http://www.hmongcenter.org/>

### Somali:

- Minnesota's Population Continues to Become More Diverse from the Department of Administration, Office of Geographic and Demographic Analysis, State of Minnesota (2005). <http://server.admin.state.mn.us/resource.html?Id=10959>

### Asian/Pacific Islander:

- Asian/Pacific Islander Community Epi Profile <http://docs.sumn.org/AsianPacificIslanderCommunityEpiProfile.doc>
- *Executive Summary, Tobacco Use in Minnesota: Perspectives from Cambodian, Hmong, Laotian, and Vietnamese Communities.* Asian Pacific Tobacco-Free Coalition of Minnesota, Blue Cross and Blue Shield of Minnesota, Minnesota Partnership for Action Against Tobacco, Southeast Asian Refugee Community Home, March 2006. <http://www.cancerplanmn.org/sites/528d17b0-2e73-45e9-894d-872fc0beac4e/uploads/SEAsianExecSummary.pdf>

### GLBT:

- *Creating an Effective Tobacco Plan for Minnesota's Gay, Lesbian, Bisexual & Transgender Communities.* Rainbow Health Initiative, December 2005. <http://www.rainbowhealth.org/images/glb-report.pdf>
- Alcohol, Tobacco & Other Drug Problems & Lesbian, Gay, Bisexual, Transgender (GLBT) Individuals <http://www.nalgap.org/PDF/Resources/GLBT.pdf>