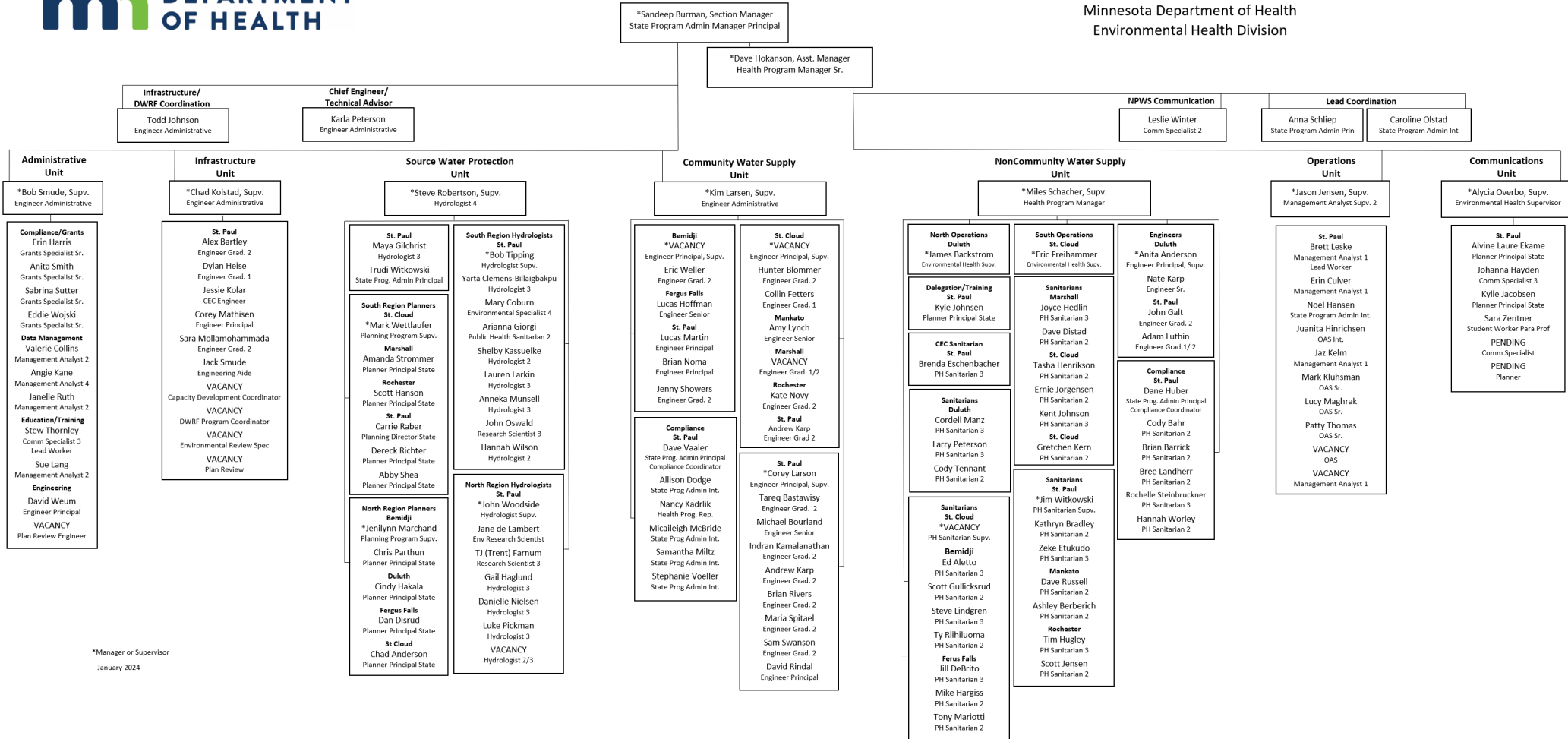


DRINKING WATER PROTECTION SECTION ORGANIZATIONAL CHART



Drinking Water Protection Section Minnesota Department of Health Environmental Health Division



*Manager or Supervisor
January 2024

Drinking Water Protection Section Organizational Chart

This is the organizational chart for the Drinking Water Protection Section in the Environmental Health Division of the Minnesota Department of Health.

Manager's Office

Sandeep Burman, State Program Admin Manager Principal, is the Section Manager, with the assistant section manager and four of the unit supervisors reporting directly to him, as well as Karla Peterson, Engineer Administrative; and Todd Johnson, Engineer Administrative.

Dave Hokanson, Health Program Manager Senior, is the Assistant Section Manager, with three of the unit supervisors reporting directly to him; as well as Anna Schliep, State Program Admin Principal; Leslie Winter, Communications Specialist 2; and Caroline Olstad, State Program Admin Intermediate.

The section consists of seven units and 132 total staff.

Source Water Protection Unit

The first unit is the Source Water Protection Unit, comprised of 29 total staff, unit supervisor is Steve Robertson, Hydrologist 4. Four region supervisors and 2 direct staff report to Steve.

St. Paul

- Maya Gilchrist, Hydrologist 3
- Trudi Witkowski, State Program Admin Principal

South Region St. Paul Hydrologists:

- Bob Tipping, Hydrologist Supervisor
- Yarta Clemens-Billaigbakpu, Hydrologist 3
- Mary Coburn, Environmental Specialist 4
- Arianna Giorgi, Public Health Sanitarian 2
- Lauren Larkin, Hydrologist 3
- Anneka Munsell, Hydrologist 3
- John Oswald, Research Scientist 3
- Hannah Wilson, Hydrologist 2
- Shelby Kassuelke, Hydrologist 2

North Region St. Paul Hydrologists:

- John Woodside, Hydrologist Supervisor
- Jane de Lambert, Environmental Research Scientist
- TJ (Trent) Farnum, Research Scientist 3
- Gail Haglund, Hydrologist 3
- Danielle Nielsen, Hydrologist 3
- Luke Pickman, Hydrologist 3
- Vacancy, Hydrologist 2/3

South Region Planners:

- Mark Wettlaufer, Planning Program Supervisor (St. Cloud)
- Scott Hanson, Planner Principal State (Rochester)
- Carrie Raber, Planning Director State (St. Paul)
- Dereck Richter, Planner Principal State (St. Paul)
- Abby Shea, Planner Principal State
- Amanda Strommer, Planner Principal State (Marshall)

North Region Planners:

- Jenilynn Marchand, Planning Program Supervisor (Bemidji)
- Chad Anderson, Planner Principal State (St. Cloud)
- Dan Disrud, Planner Principal State (Fergus Falls)
- Cindy Hakala, Planner Principal State (Duluth)
- Chris Parthun, Planner Principal State (Bemidji)

Community Water Supply Unit

The second unit is the Community Water Supply Unit, comprised of 26 total staff, unit supervisor is Kim Larsen, Engineer Administrative. Three supervisors and 6 direct staff report to Kim.

St. Paul (regional)

- Dave Vaaler, State Program Admin Principal, Compliance Coordinator
- Allison Dodge, State Program Administrator Intermediate
- Nancy Kadrlík, Health Program Representative
- Micaileigh McBride, State Program Administrator Intermediate
- Samantha Miltz, State Program Administrator Intermediate
- Stephanie Voeller, State Program Administrator Intermediate

St. Cloud (regional)

- Vacancy, Engineer Principal Supervisor (St. Cloud)
- Hunter Blommer, Engineer Graduate 1 (St. Cloud)
- Collin Fetters, Engineer Graduate 1 (St. Cloud)
- Amy Lynch, Engineer Senior (Mankato)
- Kate Novy, Engineer Graduate 2 (Rochester)
- Andrew Karp, Engineer Graduate 2 (St. Paul)
- Vacancy, Engineer Graduate 1/2

Bemidji (regional)

- Vacancy, Engineer Principal Supervisor (Bemidji)
- Lucas Hoffman, Engineer Senior (Fergus Falls)
- Lucas Martin, Engineer Principal (St. Paul)
- Brian Noma, Engineer Principal (St. Paul)
- Eric Weller, Engineer Graduate 2 (Bemidji)
- Jennifer Showers, Engineer Graduate 2 (Duluth)

St. Paul (regional)

- Corey Larson, Engineer Principal Supervisor
- David Rindal, Engineer Principal (St. Paul)
- Tariq Bastawisy, Engineer Graduate 2
- Michael Bourland, Engineer Senior
- Indran Kamalanathan, Engineer Graduate 2
- Andrew Karp, Engineer Graduate 2
- Brain Rivers, Engineer Graduate 2
- Maria Spitael, Engineer Graduate 2
- Sam Swanson, Engineer Graduate 2

Noncommunity Water Supply Unit

The third unit is the Noncommunity Water Supply Unit, comprised of 38 total staff, unit supervisor is Miles Schacher, Health Program Manager. Three region supervisors and 6 direct staff report to Miles.

Compliance

- Dane Huber, State Program Admin Principal, Compliance Coordinator (St. Paul)
- Cody Bahr, Public Health Sanitarian 2 (St. Paul)
- Brian Barrick, Public Health Sanitarian 2 (St. Paul)
- Bree Landherr, Public Health Sanitarian 2 (St. Paul)
- Rochelle Steinbruckner, Public Health Sanitarian 3 (St. Paul)
- Hannah Worley, Public Health Sanitarian 2 (St. Paul)

Engineers

- Anita Anderson, Engineer Principal Supervisor (Duluth)
- John Galt, Engineer Graduate 2 (St. Paul)
- Nate Karp, Engineer Senior (Duluth)
- Adam Luthin, Engineer Graduate 1/2

North Operations Supervisor

- James Backstrom, Environmental Health Supervisor (Duluth)

Delegation/Training

- Kyle Johnsen, Planner Principal State (St. Paul)

CEC Sanitarian

- Brenda Eschenbacher, Public Health Sanitarian 3 (St. Paul)

Sanitarians

- Cordell Manz, Public Health Sanitarian 3 (Duluth)
- Larry Peterson, Public Health Sanitarian 3 (Duluth)
- Cody Tennant, Public Health Sanitarian 2 (St. Paul)

Sanitarians

- Vacancy, Public Health Sanitarian Supervisor (St. Cloud)
- Ed Aletto, Public Health Sanitarian 3 (Bemidji)
- Jill DeBrito, Public Health Sanitarian 3 (Fergus Falls)
- Scott Gullicksrud, Public Health Sanitarian 2 (Bemidji)
- Mike Hargiss, Public Health Sanitarian 2 (Fergus Falls)
- Steven Lindgren, Public Health Sanitarian 3 (Bemidji)
- Tony Mariotti, Public Health Sanitarian 2 (Fergus Falls)
- Ty Riihiluoma, Public Health Sanitarian 2 (Bemidji)

South Operations Supervisor

- Eric Freihammer, Environmental Health Supervisor (St. Cloud)

Sanitarians

- Dave Distad, Public Health Sanitarian 2 (Marshall)
- Joyce Hedlin, Public Health Sanitarian 3 (Marshall)
- Tasha Henrikson, Public Health Sanitarian 2 (St. Cloud)
- Kent Johnson, Public Health Sanitarian 3 (St. Cloud)
- Ernie Jorgensen, Public Health Sanitarian 2 (St. Cloud)
- Gretchen Kern, Public Health Sanitarian 2 (St. Cloud)

Sanitarians

- Jim Witkowski, Public Health Sanitarian Supervisor (St. Paul)
- Ashley Berberich, Public Health Sanitarian 2 (Mankato)
- Kathryn Bradley, Public Health Sanitarian 2 (St. Paul)
- Zeke Etukudo, Public Health Sanitarian 3 (St. Paul)
- Tim Hugley, Public Health Sanitarian 3 (Rochester)
- Scott Jensen, Public Health Sanitarian 2 (Rochester)
- Dave Russell, Public Health Sanitarian 2 (Mankato)

Administrative Unit

The fourth unit is the Administrative Unit, comprised of 11 total staff, unit supervisor is Bob Smude, Engineer Administrative. All unit staff report directly to Bob.

Education/Training:

- Stew Thornley, Communications Specialist 3, Lead Worker
- Sue Lang, Management Analyst 2

Data Management:

- Valerie Collins, Management Analyst 2
- Angie Kane, Management Analyst 4
- Janelle Ruth, Management Analyst 2

Compliance/Grants:

- Erin Harris, Grants Specialist Senior
- Anita Smith, Grants Specialist Senior
- Sabrina Sutter, Grants Specialist Senior
- Eddie Wojski, Grants Specialist Senior

Engineering:

- David Weum, Engineer Principal
- Vacancy, Plan Review Engineer

Operations Unit

The fifth unit is the Operations Unit, comprised of 9 total staff - unit supervisor is Jason Jensen, Management Analyst Supervisor 2. All unit staff report directly to Jason.

St. Paul

- Brett Leske, Management Analyst 1, Lead Worker
- Erin Culver, Management Analyst 1
- Noel Hansen, State Program Administrator Intermediate
- Juanita Hinrichsen, Office & Administrative Specialist Intermediate
- Jaz Kelm, Management Analyst 1
- Mark Kluhsman, Office & Administrative Specialist Senior
- Lucy Maghrak, Office & Administrative Specialist Senior
- Patricia Thomas, Office & Administrative Specialist Senior
- Vacancy, Office & Administrative Specialist
- Vacancy, Management Analyst 1

Infrastructure Unit

The sixth unit is the Infrastructure Unit, comprised of 7 total staff - unit supervisor is Chad Kolstad, Engineer Administrative. All unit staff report directly to Chad.

St. Paul

- Alex Bartley, Engineer Graduate 2
- Dylan Heise, Engineer Graduate 1
- Jessie Kolar, CEC Engineer
- Corey Mathisen, Engineer Principal
- Sara Mollamohammada, Engineer Graduate 2
- Jack Smude, Engineering Aide
- Vacancy, Capacity Development Coordinator
- Vacancy, DWRF Program Coordinator
- Vacancy, Environmental Review Spec
- Vacancy, Plan Review

Communications

The seventh unit is the Communications Unit, comprised of 5 total staff - unit supervisor is Alycia Overbo, Environmental Health Supervisor. All unit staff report directly to Alycia.

St. Paul

- Alvine Laure Ekame, Planner Principal State
- Johanna Hayden, Communications Specialist 3
- Kylie Jacobsen, Planner Principal State
- Sara Zentner, Student Worker Para Prof
- Pending, Communications Specialist
- Pending, Planner

Minnesota Department of Health

Program name

Street address

PO Box 64975

St. Paul, MN 55164-0975

651-201-4700

www.health.state.mn.us

January 2024

To obtain this information in a different format, call: 651-201-4700.