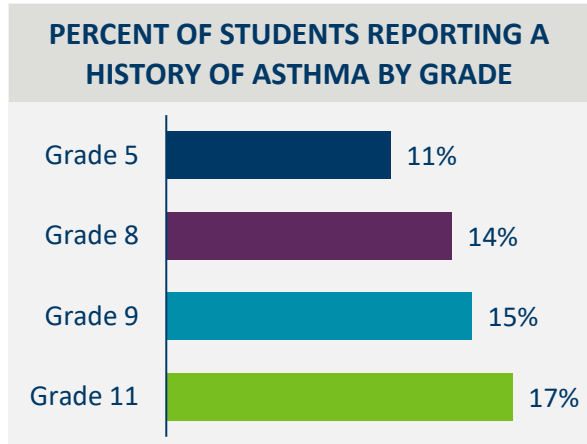


Asthma among Middle & High School Students

RESULTS FROM 2022 MINNESOTA STUDENT SURVEY (MSS)

Asthma is a chronic disease characterized by swelling of the airway linings, over-production of mucus, and contractions of the muscles surrounding the airways. If not well controlled, asthma can impact academic performance and prevent students from participating in school activities. This factsheet presents data on asthma among students in grades 5, 8, 9 and 11. These data represent students who have ever been told they have asthma, noted as a history of asthma, rather than just students who are currently experiencing asthma symptoms.

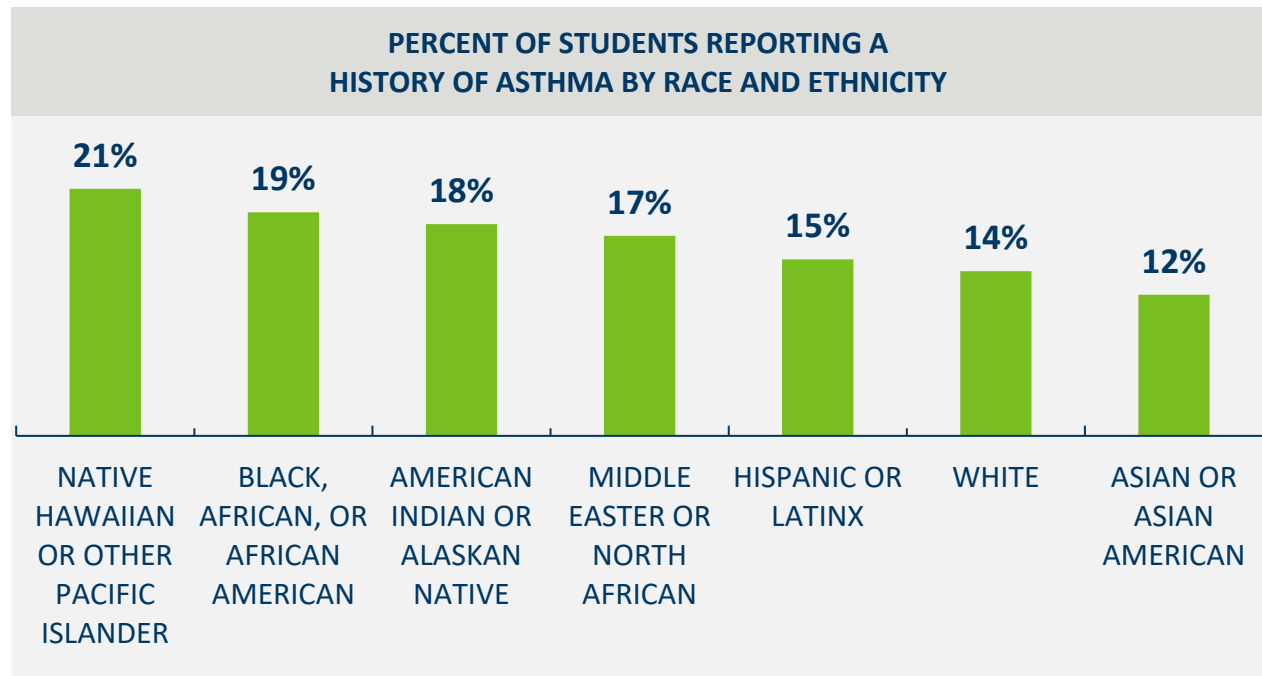


Overall, 14.1% of students in grades 5, 8, 9, and 11 reported that they had ever been told they had asthma. Students in grade 5 reported the lowest history of asthma compared to grades 8, 9, and 11.

Disparities exist by race and ethnicity.

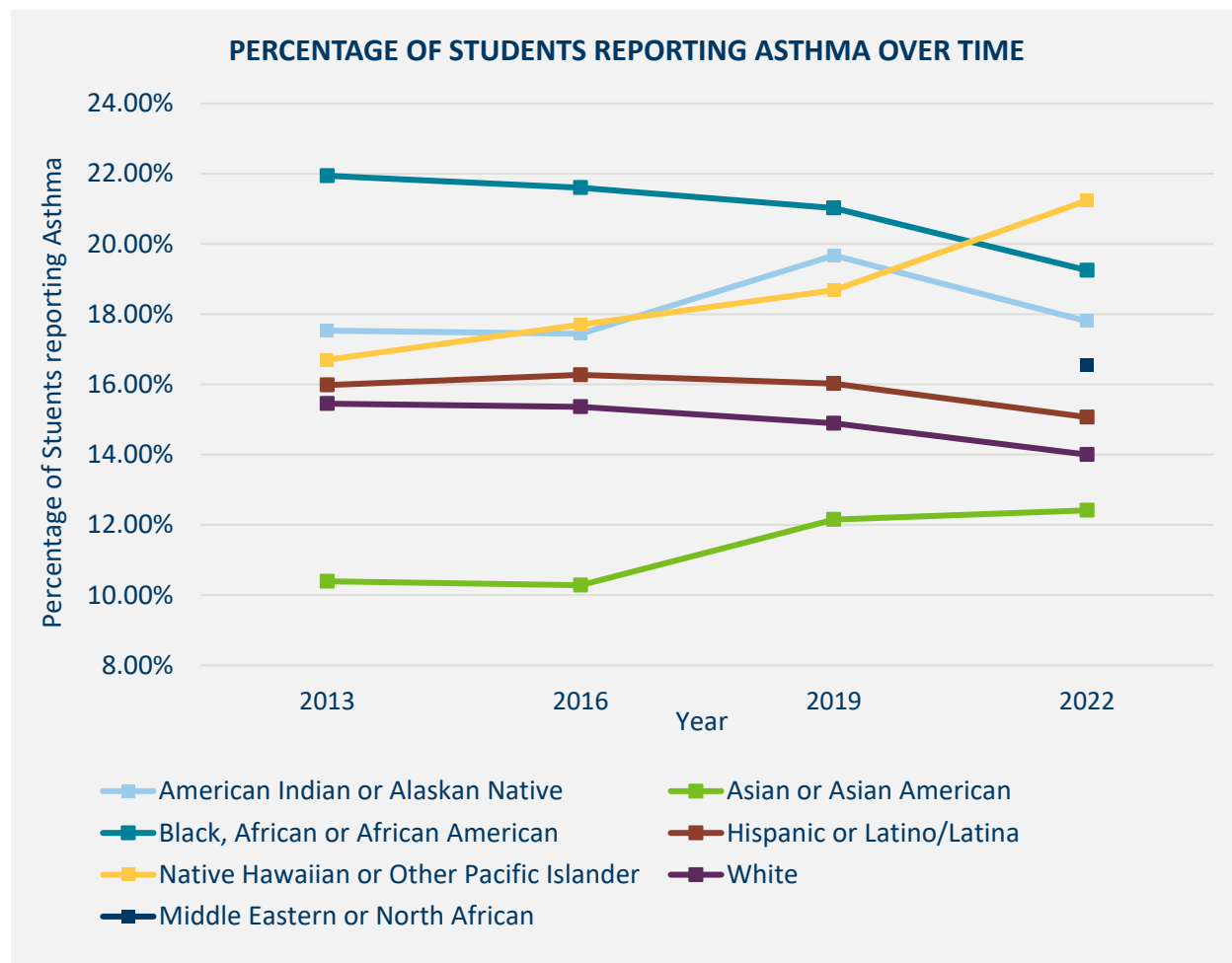
Asthma disproportionately impacts students of color.

Native Hawaiian or Other Pacific Islander; Black, African or African American; and American Indian or Alaskan Native students report experiencing the highest prevalence of asthma.



Asthma prevalence changes over time.

Data collected via the Minnesota student Survey since 2013 shows the change of asthma prevalence in students in grades 5, 8, 9, and 11. Native Hawaiian or Other Pacific Islander; and Asian or Asian American; student have seen an increase in Asthma prevalence over time. While Black, African, or African American; Hispanic or Latino/Latina; and white students have seen a slight decrease in asthma prevalence. Asthma prevalence in American Indian or Alaskan Native students increase from 2013 to 2019 but have since decreased in the year 2022, however, the impact of the COVID-19 pandemic on these trends is yet to be determined. Middle Eastern or North African demographic data was collected separately for the first time in 2022.



Data presented on asthma among students is from a sample and the numbers presented do not account for sample size or variability; differences may not be significant. The racial and ethnic categories presented include all students who identified with that categorization, either alone or in combination with other categories. For more details regarding this analysis, contact the Asthma Program at health.asthma@state.mn.us.

The data in this factsheet is from the 2022 Minnesota Student Survey that was conducted among more than 135,000 students in grades 5, 8, 9, and 11 from schools across Minnesota. The survey included the following question about asthma: “Has a doctor or nurse ever told you that you have asthma?”

More information about the Minnesota Student Survey can be found on the [Department of Education’s webpage](#) and more about asthma on the [Asthma Program’s Asthma Management in Schools webpage](#).