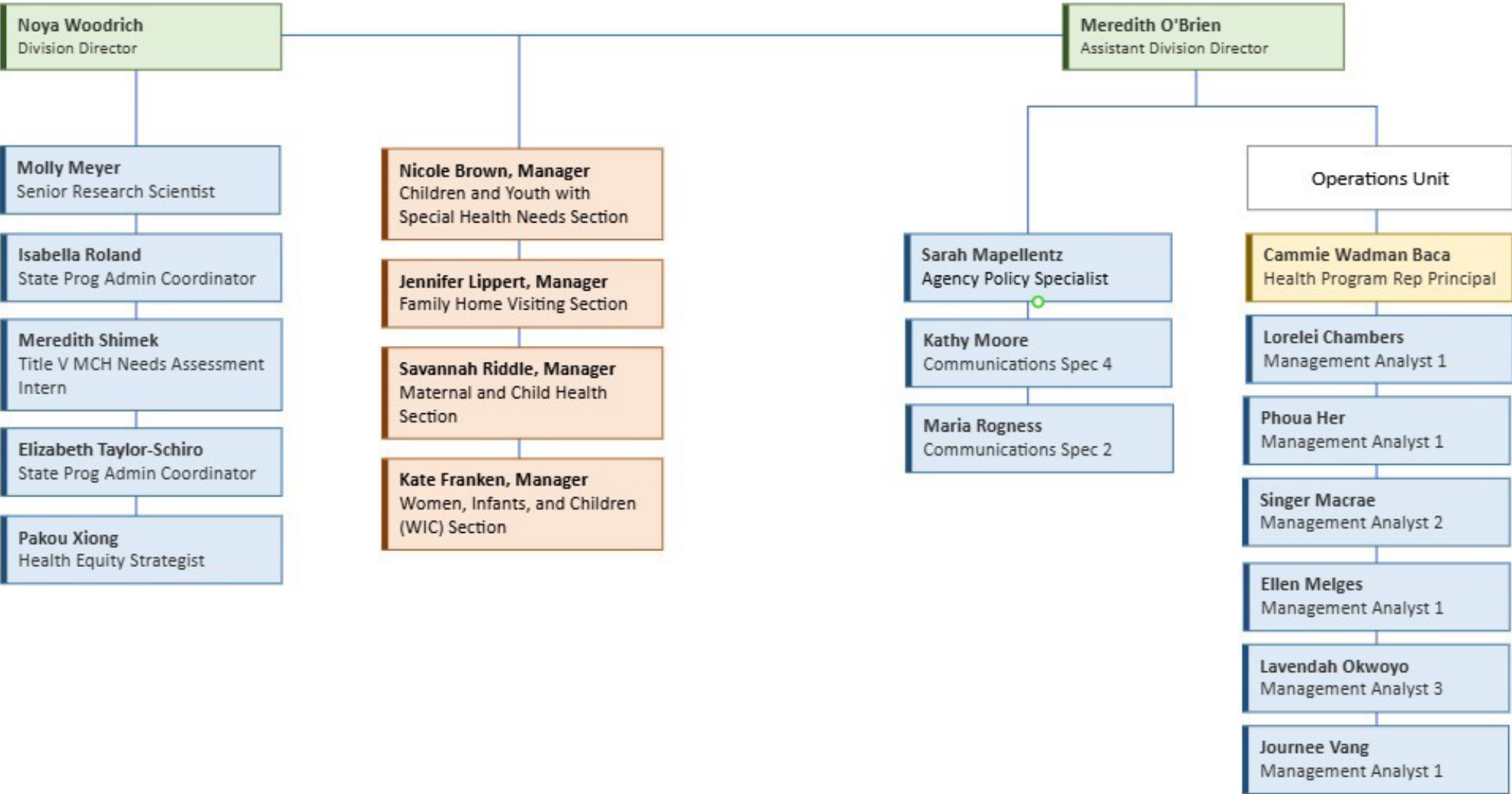
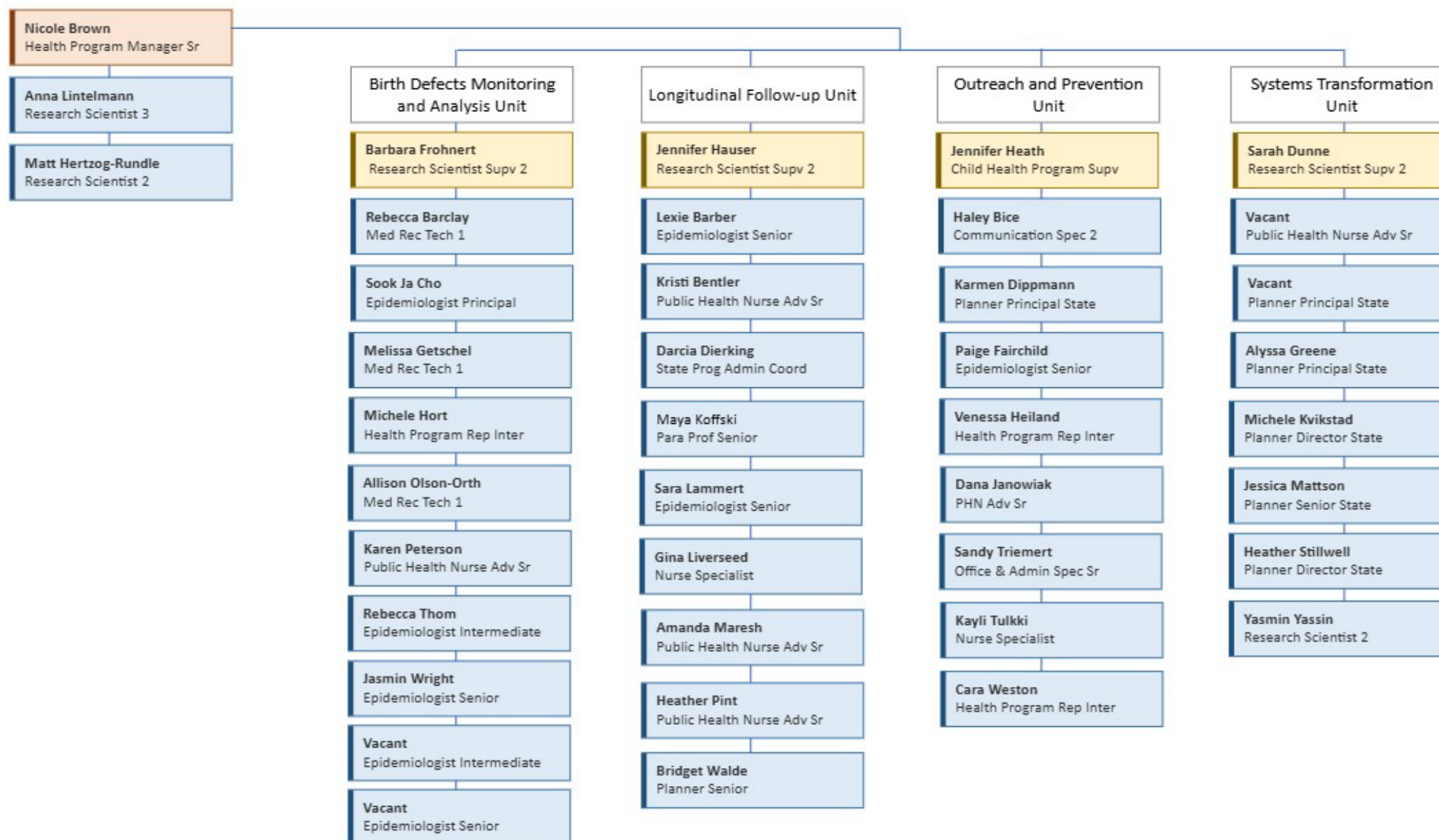




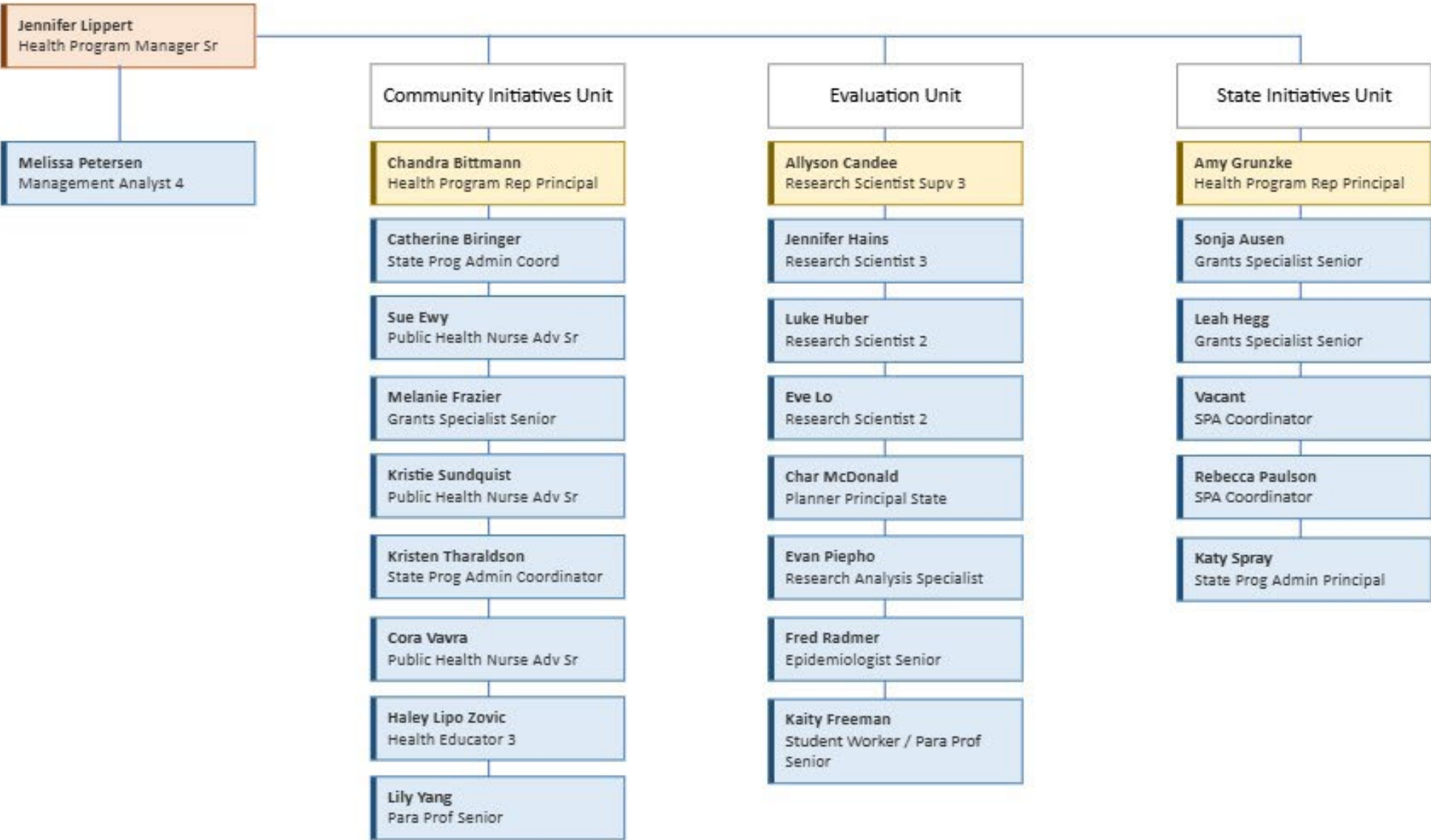
Child and Family Health Division Organizational Chart



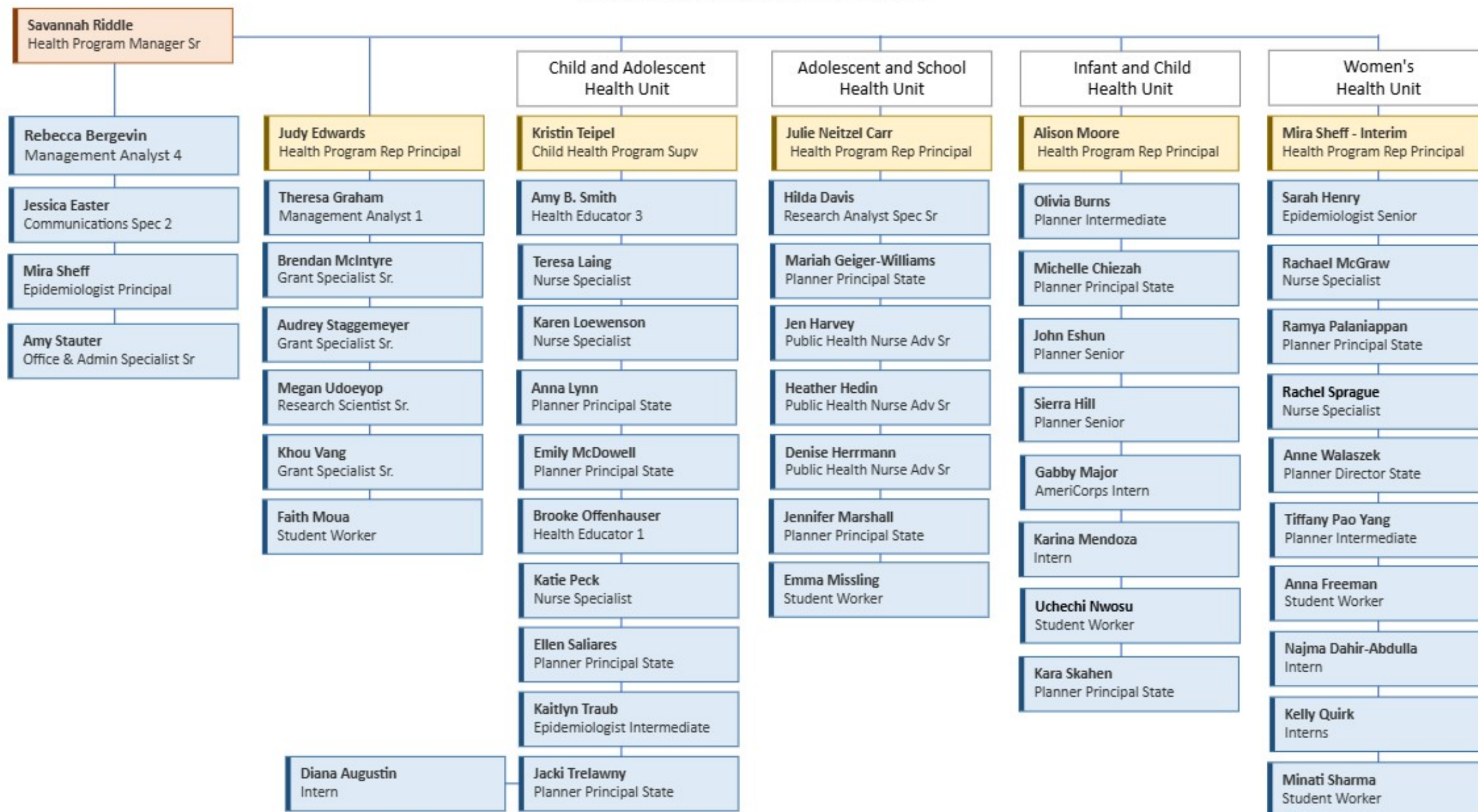
Children and Youth with Special Health Needs Section



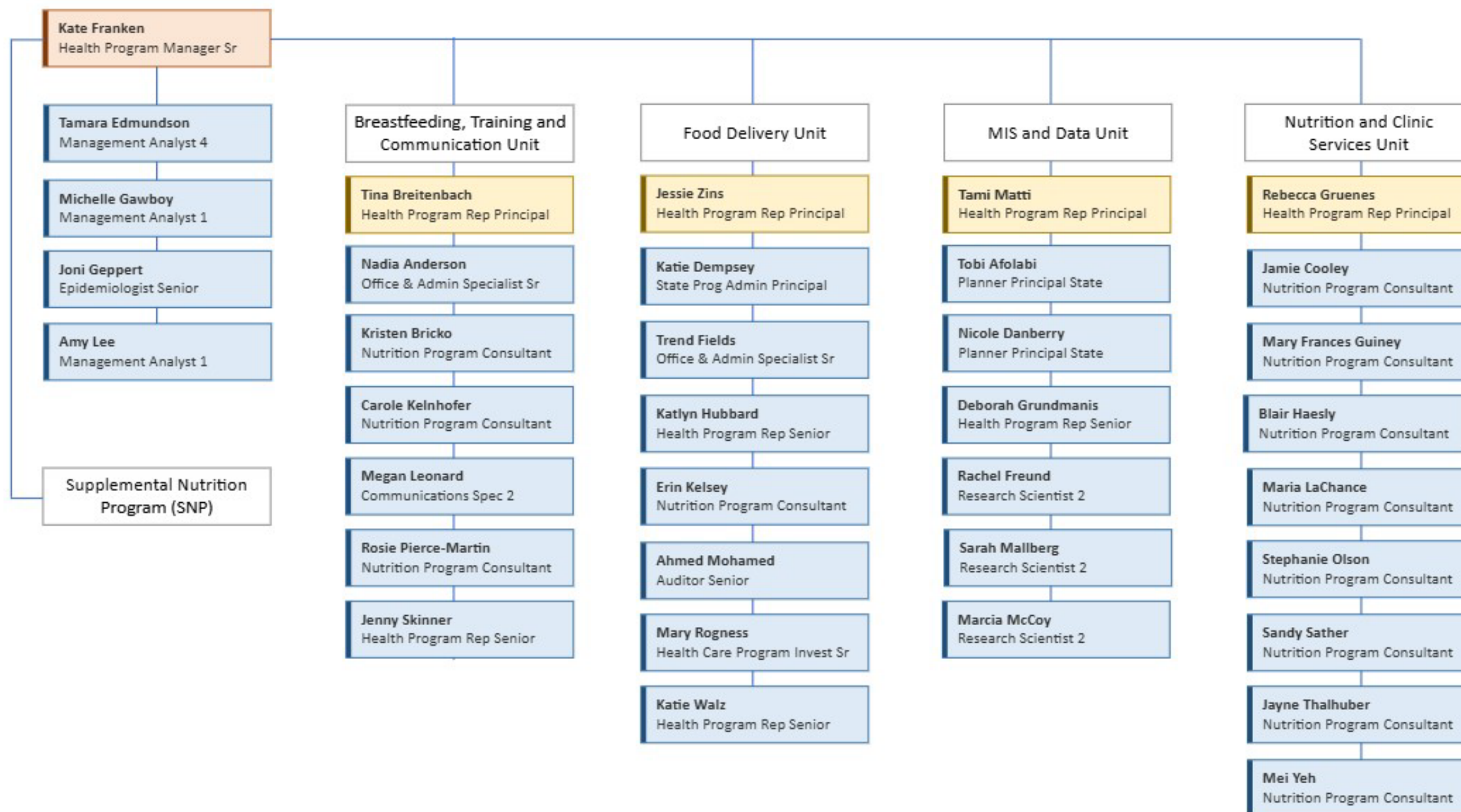
Family Home Visiting Section



Maternal and Child Health Section



Women, Infant and Children (WIC) Section



Child and Family Health Division Organizational Chart

FEBRUARY 2025

This is the text version of the Division organizational chart for the Child & Family Health Division of the Minnesota Department of Health.

Director's office

Noya Woodrich is the Division Director. Reporting directly to the Division Director are, Molly Meyer, Senior Research Scientist, Isabella Roland, State Prog Admin Coordinator, Meredith Shimek, Title V MCH Needs Assessment Intern, Elizabeth Taylor-Schiro, State Program Admin Coordinator, and Pakou Xiong, Health Equity Strategist. Nicole Brown, Children and Youth with Special Health Needs Section Manager, Jennifer Lippert, Family Home Visiting Section Manager, Savannah Riddle, Maternal and Child Health Section Manager, and Kate Franken, Women, Infant and Children Section Manager. Meredith O'Brien, Assistant Division Director. Reporting directly to the Assistant Division Director are Sarah MapellLentz, Agency Policy Specialist, Kathy Moore, Communication Spec 4, Maria Rogness, Communication Spec 2, and Cammie Wadman Baca, Operations Unit Supervisor (Health Program Rep Principal), who supervises Lorelei Chambers, Management Analyst 1, Phoua Her, Management Analyst 1, Singer Macrae, Management Analyst 2, Ellen Melges, Management Analyst 1, Lavendah Okwoyo, Management Analyst 3, and Journee Vang, Management Analyst 1.

Children and Youth with Special Health Needs (CYSHN) section

Nicole Brown is the CYSHN Section Manager. Reporting directly to the Section Manager are Anna Lintelmann, Research Scientist 3, Matt Hertzog-Rundle, Research Scientist 2, and four-unit supervisors listed below.

- Birth Defects Monitoring and Analysis Unit, Barbara Frohnert, Supervisor. Reporting to the Unit Supervisor is Rebecca Barclay, Med Red Tech 1, Sook Ja Cho, Epidemiologist Principal, Melissa Getschel, Med Rec Tech 1, Michele Hort, Health Program Rep Intermediate, Allison Olson-Orth, Med Rec Tech 1, Karen Peterson, Public Health Nurse Adv Senior, Rebecca Thom, Epidemiologist Intermediate, and Jasmin Wright, Epidemiologist Senior. Vacant, Epidemiologist Intermediate; Vacant, Epidemiologist Senior.
- Longitudinal Follow-up Unit, Jennifer Hauser, Supervisor. Reporting to the Unit Supervisor is Lexie Barber, Epidemiologist Senior, Kristi Bentler, Public Health Nurse Adv Senior, Darcia Dierking, State Prog Admin Coordinator, Maya Koffski, Para Prof Senior, Sara Lammert, Epidemiologist Senior, Gina Liverseed, Nurse Specialist, Amanda Maresh, Public Health Nurse Adv Senior, Heather Pint, Public Health Nurse Adv Senior, and Bridget Walde, Planner Senior.
- Outreach and Prevention Unit, Vacant, Jennifer Heath, Child Health Program Supervisor. Reporting to the Unit Supervisor is Haley Bice, Communication Specialist 2, Karmen Dippmann, Planner Principal State, Paige Fairchild, Epidemiologist Senior, Venessa Heiland, Health Program Rep Intermediate, Dana Janowiak, PHN Adv Senior, Sandy Triemert, Office

& Admin Spec Senior, Kayli Tulkki, Nurse Specialist, and Cara Weston, Health Program Rep Intermediate.

- Systems Transformation Unit, Sarah Dunne, Supervisor. Reporting to the Unit Supervisor is Vacant, Public Health Nurse Adv Senior, Vacant, Planner Principal State, Alyssa Greene, Planner Principal State, Michele Kvikstad, Planner Director State, Jessica Mattson, Planner Principal State, Heather Stillwell, Planner Director State, and Yasmin Yassin, Research Scientist 2.

Family Home Visiting (FHV) section

Jennifer Lippert is the FHV Section Manager. Reporting directly to the Section Manager is Melissa Petersen, Management Analyst 4, and three-Unit Supervisors listed below.

- Community Initiatives Unit, Chandra Bittmann, Supervisor. Reporting to the Unit Supervisor is Catherine Biringer, Planner Senior State, Sue Ewy, Public Health Nurse Adv Senior, Melanie Frazier, Grants Specialist Senior, Kristie Sundquist, Public Health Nurse Adv Senior, Kristin Tharaldson, State Prog Admin Coordinator, Cora Vavra, Public Health Nurse Adv Sr, Haley Lipo Zovic, Health Educator 3, and Lily Yang, Para Prof Sr.
- Evaluation Unit, Allyson Candee, Supervisor. Reporting to the Unit Supervisor is Jennifer Hains, Research Scientist 3, Luke Huber, Research Scientist 2, Eve Lo, Research Scientist 2, Char McDonald, Planner Principal State, Evan Piepho, Research Analysis Specialist, Fred Radmer, Epidemiologist Senior, and Kaity Freeman, Student Worker/Para Prof Sr.
- State Initiatives Unit, Amy Grunske, Supervisor. Reporting to the Unit Supervisor is Sonja Ausen, Grants Specialist Senior, Leah Hegg, Grants Specialist Senior, Vacant, SPA Coordinator, Rebecca Paulson, SPA Coordinator, and Katy Spray, State Prog Admin Principal.

Maternal and Child Health (MCH) section

Savannah Riddle is the MCH Section Manager. Reporting directly to the Section Manager is Rebecca Bergevin, Management Analyst 4, Jessica Easter, Communications Spec 2, Mira Sheff, Epidemiologist Principal, Amy Stauter, Office & Admin Spec Senior, Judy Edwards, Health Program Rep Principal/Supervisor, and three-Unit Supervisors listed below.

- Judy Edwards, MCH Supervisor. Reporting to the MCH Supervisor is Theresa Graham, Management Analyst 1, Brendan McIntyre, Grant Specialist Sr., Audrey Staggemeyer, Grant Specialist Sr., Megan Udoeyop, Research Scientist Sr., Khou Vang, Grant Specialist Sr., and Faith Moua, Student Worker.
- Child and Adolescent Health Unit, Kristin Teipel, Supervisor. Reporting to Unit Supervisor is Amy B. Smith, Health Educator 3, Teresa Laing, Nurse Specialist, Karen Loewenson, Nurse Specialist, Anna Lynn, Planner Principal State, Emily McDowell, Planner Principal State, Brooke Offenhauser, Health Educator 1, Katie Peck, Nurse Specialist, Ellen Saliars, Planner Principal State, Kaitlyn Traub, Epidemiologist Principal, Jacki Trelawny, Planner Principle State, and Diana Augustin, Intern.
- Adolescent and School Health Unit, Julie Neitzel Carr, Supervisor. Reporting to Unit Supervisor is Hilda Davis, Research Analyst Spec Senior, Mariah Geiger-Williams, Planner Principal State, Jen Harvey, Public Health Nurse Adv Senior, Heather Hedin, Public Health

CHILD AND FAMILY HEALTH ORGANIZATIONAL CHART

Nurse Adv Senior, Denise Herrmann, Public Health Nurse Adv Senior, Jennifer Marshall, Planner Principal State, and Emma Missling, Student Worker.

- Infant and Child Health Unit, Alison Moore, Supervisor. Reporting to Unit Supervisor is Olivia Burns, Planner Intermediate, Michelle Chiezah, Planner Principal State, John Eshun, Planner Senior, Sierra Hill Planner Senior, Gabby Major, AmeriCorps Intern, Karen Mendoza, Intern, Uchechi Nwosu, Student Worker, Kara Skahen, Planner Principal State.
- Women's Health Unit, Mira Sheff, Interim Supervisor. Reporting to Unit Supervisor is, Sarah Henry, Epidemiologist Senior, Rachael McGraw, Nurse Specialist, Ramya Palaniappan, Planner Principal State, Rachel Sprague, Nurse Specialist, Anne Walaszek, Planner Director State, Tiffany Pao Yang, Planner Intermediate, and Anna Freeman, Student Worker, Najma Dahir-Abdulla, Intern, Kelly Quirk, Intern, and Minati Sharma, Student Worker.

Women, Infant and Children (WIC) section

Kate Franken is the WIC Section Manager. Reporting directly to the Section Manager is the Supplemental Nutrition Program (SNP) Unit staff. Tamara Edmundson, Management Analyst 4, Michelle Gawboy, Management Analyst 1, Joni Geppert, Epidemiologist Senior, and Amy Lee, Management Analyst 1, and four-Unit Supervisors listed below.

- Breastfeeding, Training and Communication Unit, Tina Breitenbach, Supervisor. Reporting to the Unit Supervisor is Nadia Anderson, Office & Admin Specialist Senior, Kristen Bricko, Nutrition Program Consultant, Carole Kelnhofer, Nutrition Program Consultant, Megan Leonard, Communication Spec 2, Rosie Pierce-Martin, Nutrition Program Consultant, and Jenny Skinner, Health Program Rep Senior.
- Food Delivery Unit, Jessie Zins, Supervisor. Reporting to the Unit Supervisor is Katie Dempsey, State Prog Admin Principal, Trend Fields, Office & Admin Specialist Senior, Katlyn Hubbard, Health Program Rep Senior, Erin Kelsey, Nutrition Program Consultant, Ahmed Mohamed, Auditor Senior, Mary Rogness, Health Care Program Invest Senior, and Katie Walz, Health Program Rep Senior.
- MIS and Data Unit, Tami Matti, Supervisor. Reporting to the Unit Supervisor is Tobi Afolabi, Planner Principal State, Nicole Danberry, Planner Principal State. Deborah Grundmanis, Health Program Rep Senior, Rachel Freund, Research Scientist 2, Sarah Mallberg, Research Scientist 2, and Marcia McCoy, Research Scientist 2.
- Nutrition and Clinic Services Unit, Rebecca Gruenes, Supervisor. Reporting to the Unit Supervisor are eight Nutrition Program Consultants, Jamie Cooley, Mary Frances Guiney, Blair Haesly, Maria LaChance, Stephanie Olson, Sandy Sather, Jayne Thalhuber, and Mei Yeh.