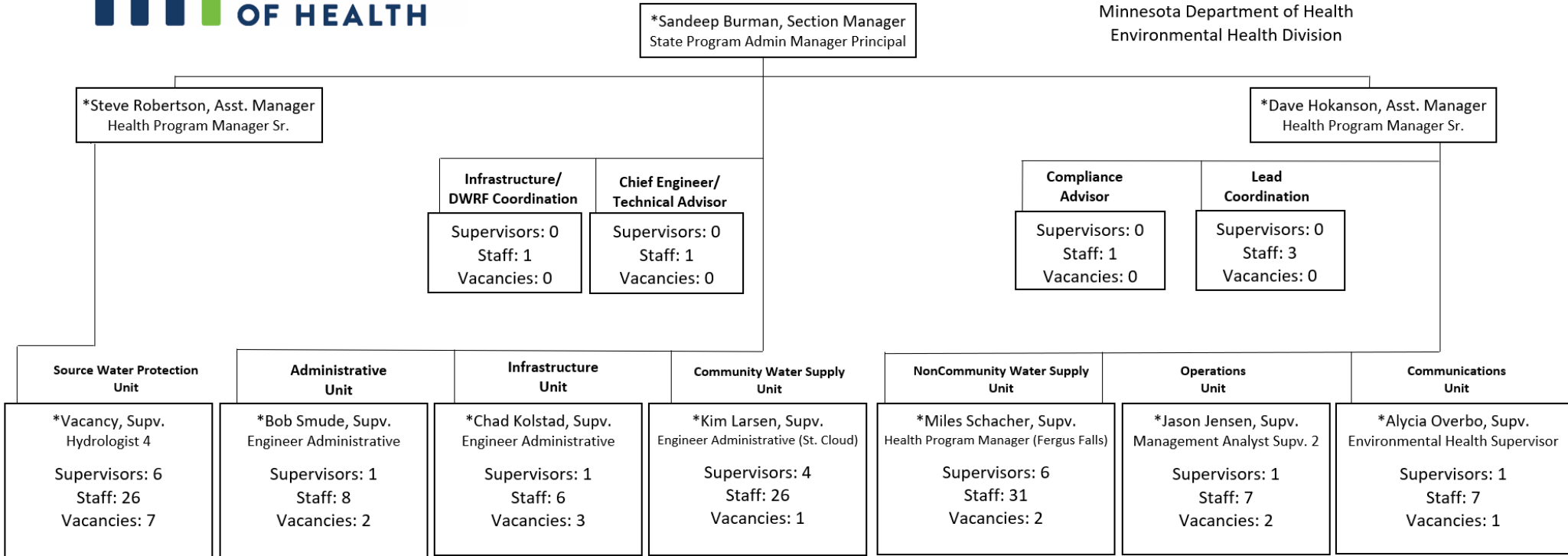


DRINKING WATER PROTECTION SECTION ORGANIZATIONAL CHART



**Drinking Water Protection Section
Simplified Org Chart**
Minnesota Department of Health
Environmental Health Division

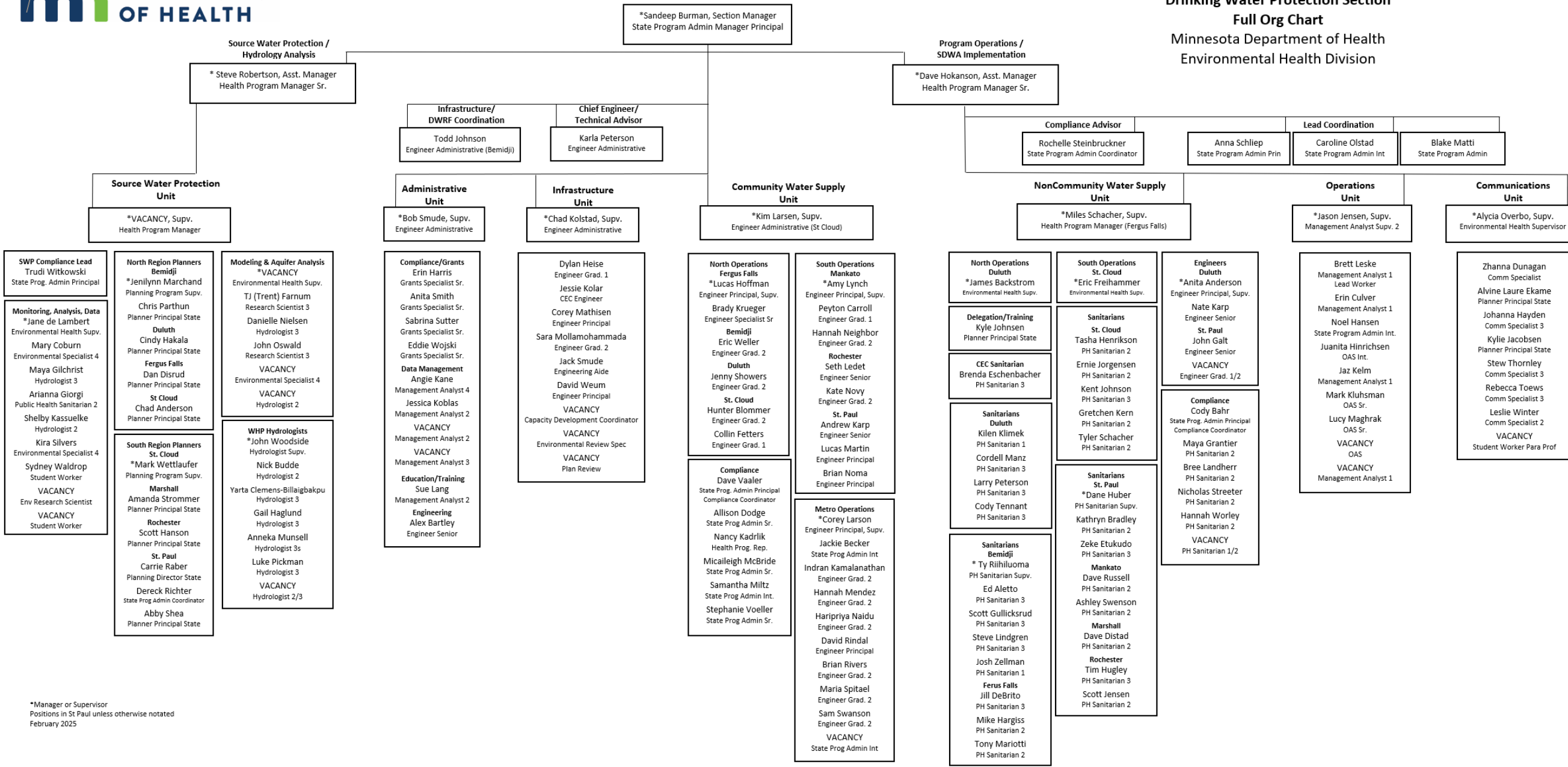


*Manager or Supervisor
February 2025

DRINKING WATER PROTECTION SECTION ORGANIZATIONAL CHART



Drinking Water Protection Section Full Org Chart Minnesota Department of Health Environmental Health Division



*Manager or Supervisor
Positions in St Paul unless otherwise notated
February 2025

Drinking Water Protection Section

Organizational Chart

This is the organizational chart for the Drinking Water Protection Section in the Environmental Health Division of the Minnesota Department of Health.

Manager's Office

*Sandeep Burman, State Program Admin Manager Principal, is the Section Manager, with the assistant section manager and three of the unit supervisors reporting directly to him; as well as Karla Peterson, Engineer Administrative; and Todd Johnson, Engineer Administrative (Bemidji).

*Dave Hokanson, Health Program Manager Senior, is an Assistant Section Manager, with three of the unit supervisors reporting directly to him; as well as Rochelle Steinbruckner, State Program Admin Coordinator; Anna Schliep, State Program Admin Principal; Caroline Olstad, State Program Admin Intermediate; and Blake Matti, State Program Admin.

*Steve Robertson, Health Program Manager Senior, is an Assistant Section Manager, with one unit supervisor reporting directly to them.

The section consists of seven units and 137 total staff.

Source Water Protection Unit

The first unit is the Source Water Protection Unit, comprised of 30 total staff including unit supervisor *Vacancy, Health Program Manager. Five region supervisors and 1 direct staff report to Vacancy.

SWP Compliance Lead:

- Trudi Witkowski, State Program Admin Principal

Monitoring, Analysis, Data:

- *Jane de Lambert, Environmental Health Supervisor
- Mary Coburn, Environmental Specialist 4
- Maya Gilchrist, Hydrologist 3
- Arianna Giorgi, Public Health Sanitarian 2
- Shelby Kassuelke, Hydrologist 2
- Kira Silvers, Environmental Specialist 4
- Sydney Waldrop, Student Worker
- Vacancy, Environmental Research Scientist
- Vacancy, Student Worker

Modeling & Aquifer Analysis:

- *Vacancy, Environmental Health Supervisor
- TJ (Trent) Farnum, Research Scientist 3
- Danielle Nielsen, Hydrologist 3
- John Oswald, Research Scientist 3
- Vacancy, Environmental Specialist 4
- Vacancy, Hydrologist 2

WHP (Wellhead Protection) Hydrologists:

- *John Woodside, Hydrologist Supervisor
- Nick Budde, Hydrologist 2
- Yarta Clemens-Billaigbakpu, Hydrologist 3
- Gail Haglund, Hydrologist 3
- Anneka Munsell, Hydrologist 3
- Luke Pickman, Hydrologist 3
- Vacancy, Hydrologist 2/3

North Region Planners:

- *Jenilynn Marchand, Planning Program Supervisor (Bemidji)
- Chad Anderson, Planner Principal State (St. Cloud)
- Dan Disrud, Planner Principal State (Fergus Falls)
- Cindy Hakala, Planner Principal State (Duluth)
- Chris Parthun, Planner Principal State (Bemidji)

South Region Planners:

- *Mark Wettlaufer, Planning Program Supervisor (St. Cloud)
- Scott Hanson, Planner Principal State (Rochester)
- Carrie Raber, Planning Director State
- Dereck Richter, State Program Administrator Coordinator
- Abby Shea, Planner Principal State
- Amanda Strommer, Planner Principal State (Marshall)

Community Water Supply Unit

The second unit is the Community Water Supply Unit, comprised of 30 total staff including unit supervisor *Kim Larsen, Engineer Administrative. Three supervisors and 6 direct staff report to Kim.

St. Paul (regional)

- Dave Vaaler, State Program Admin Principal, Compliance Coordinator
- Allison Dodge, State Program Administrator Senior
- Nancy Kadrlík, Health Program Representative
- Micaileigh McBride, State Program Administrator Senior
- Samantha Miltz, State Program Administrator Intermediate
- Stephanie Voeller, State Program Administrator Senior

North Operations

- *Lucas Hoffman, Engineer Principal Supervisor (Fergus Falls)
- Hunter Blommer, Engineer Graduate 1 (St. Cloud)
- Collin Feters, Engineer Graduate 1 (St. Cloud)
- Brady Krueger, Engineer Specialist Senior (Fergus Falls)
- Jennifer Showers, Engineer Graduate 2 (Duluth)
- Eric Weller, Engineer Graduate 2 (Bemidji)

South Operations

- *Amy Lynch, Engineer Principal Supervisor (Mankato)
- Peyton Carroll, Engineer Graduate 1
- Andrew Karp, Engineer Senior
- Seth Ledet, Engineer Senior (Rochester)
- Lucas Martin, Engineer Principal
- Hannah Neighbor, Engineer Graduate 2
- Brian Noma, Engineer Principal
- Kate Novy, Engineer Graduate 2 (Rochester)

Metro Operations

- *Corey Larson, Engineer Principal Supervisor
- Jackie Becker, State Program Administrator Intermediate
- Indran Kamalanathan, Engineer Graduate 2
- Hannah Mendez, Engineer Graduate 2
- Haripriya Naidu, Engineer Graduate 2
- David Rindal, Engineer Principal
- Brain Rivers, Engineer Graduate 2
- Maria Spitael, Engineer Graduate 2
- Sam Swanson, Engineer Graduate 2
- Vacancy, State Program Administrator Intermediate

Noncommunity Water Supply Unit

The third unit is the Noncommunity Water Supply Unit, comprised of 37 total staff including unit supervisor *Miles Schacher, Health Program Manager. Three region supervisors and 6 direct staff report to Miles.

Compliance

- Cody Bahr, State Program Admin Principal, Compliance Coordinator
- Bree Landherr, Public Health Sanitarian 2
- Nicholas Streeter, Public Health Sanitarian 2
- Hannah Worley, Public Health Sanitarian 2
- Vacancy, Public Health Sanitarian 1/2

Engineers

- *Anita Anderson, Engineer Principal Supervisor (Duluth)
- John Galt, Engineer Senior
- Nate Karp, Engineer Senior (Duluth)
- Vacancy, Engineer Graduate 1/2

North Operations Supervisor

- *James Backstrom, Environmental Health Supervisor (Duluth)

Delegation/Training

- Kyle Johnsen, Planner Principal State

CEC Sanitarian

- Brenda Eschenbacher, Public Health Sanitarian 3

Sanitarians

- Kilen Klimek, Public Health Sanitarian 1 (Duluth)
- Cordell Manz, Public Health Sanitarian 3 (Duluth)
- Larry Peterson, Public Health Sanitarian 3 (Duluth)
- Cody Tennant, Public Health Sanitarian 3 (Duluth)

Sanitarians

- *Ty Riihiluoma, Public Health Sanitarian Supervisor (Bemidji)
- Ed Aletto, Public Health Sanitarian 3 (Bemidji)
- Jill DeBrito, Public Health Sanitarian 3 (Fergus Falls)
- Scott Gullicksrud, Public Health Sanitarian 3 (Bemidji)
- Mike Hargiss, Public Health Sanitarian 2 (Fergus Falls)
- Steven Lindgren, Public Health Sanitarian 3 (Bemidji)
- Tony Mariotti, Public Health Sanitarian 2 (Fergus Falls)
- Josh Zellman, Public Health Sanitarian 1 (Bemidji)

South Operations Supervisor

- *Eric Freihammer, Environmental Health Supervisor (St. Cloud)

Sanitarians

- Tasha Henrikson, Public Health Sanitarian 2 (St. Cloud)
- Kent Johnson, Public Health Sanitarian 3 (St. Cloud)
- Ernie Jorgensen, Public Health Sanitarian 2 (St. Cloud)
- Gretchen Kern, Public Health Sanitarian 2 (St. Cloud)
- Tyler Schacher, Public Health Sanitarian 2 (St. Cloud)

Sanitarians

- *Dane Huber, Public Health Sanitarian Supervisor
- Kathryn Bradley, Public Health Sanitarian 2
- Dave Distad, Public Health Sanitarian 2 (Marshall)
- Zeke Etukudo, Public Health Sanitarian 3
- Tim Hugley, Public Health Sanitarian 3 (Rochester)
- Scott Jensen, Public Health Sanitarian 2 (Rochester)
- Dave Russell, Public Health Sanitarian 2 (Mankato)
- Ashley Swenson, Public Health Sanitarian 2 (Mankato)

Administrative Unit

The fourth unit is the Administrative Unit, comprised of 9 total staff including unit supervisor *Bob Smude, Engineer Administrative. All unit staff report directly to Bob.

Compliance/Grants:

- Erin Harris, Grants Specialist Senior
- Anita Smith, Grants Specialist Senior
- Sabrina Sutter, Grants Specialist Senior
- Eddie Wojski, Grants Specialist Senior

Data Management:

- Angie Kane, Management Analyst 4
- Jessica Koblas, Management Analyst 2
- Vacancy, Management Analyst 2
- Vacancy, Management Analyst 3

Education/Training:

- Sue Lang, Management Analyst 2

Engineering:

- Alex Bartley, Engineer Senior

Operations Unit

The fifth unit is the Operations Unit, comprised of 8 total staff including unit supervisor *Jason Jensen, Management Analyst Supervisor 2. All unit staff report directly to Jason.

St. Paul

- Brett Leske, Management Analyst 1, Lead Worker
- Erin Culver, Management Analyst 1
- Noel Hansen, State Program Administrator Intermediate
- Juanita Hinrichsen, Office & Administrative Specialist Intermediate
- Jaz Kelm, Management Analyst 1
- Mark Kluhsman, Office & Administrative Specialist Senior
- Lucy Maghrak, Office & Administrative Specialist Senior
- Vacancy, Office & Administrative Specialist
- Vacancy, Management Analyst 1

Infrastructure Unit

The sixth unit is the Infrastructure Unit, comprised of 7 total staff including unit supervisor *Chad Kolstad, Engineer Administrative. All unit staff report directly to Chad.

St. Paul

- Dylan Heise, Engineer Graduate 1
- Jessie Kolar, CEC Engineer
- Corey Mathisen, Engineer Principal
- Sara Mollamohammada, Engineer Graduate 2
- Jack Smude, Engineering Aide
- David Weum, Engineer Principal
- Vacancy, Capacity Development Coordinator
- Vacancy, Environmental Review Spec
- Vacancy, Plan Review

Communications and Strategic Initiatives Unit

The seventh unit is the Communications Unit, comprised of 7 total staff including unit supervisor *Alycia Overbo, Environmental Health Supervisor. All unit staff report directly to Alycia.

St. Paul

- Zhanna Dunagan, Communications Specialist
- Alvine Laure Ekame, Planner Principal State
- Johanna Hayden, Communications Specialist 3
- Kylie Jacobsen, Planner Principal State
- Stew Thornley, Communications Specialist 3
- Rebecca Toews, Communications Specialist 3
- Leslie Winter, Communications Specialist 2
- Vacancy, Student Worker Para Prof

Minnesota Department of Health
Drinking Water Protection
Street address
PO Box 64975
St. Paul, MN 55164-0975
651-201-4700
www.health.state.mn.us

To obtain this information in a different format, call: 651-201-4700.

*Manager or Supervisor

Positions located in St. Paul unless otherwise notated

February 2025