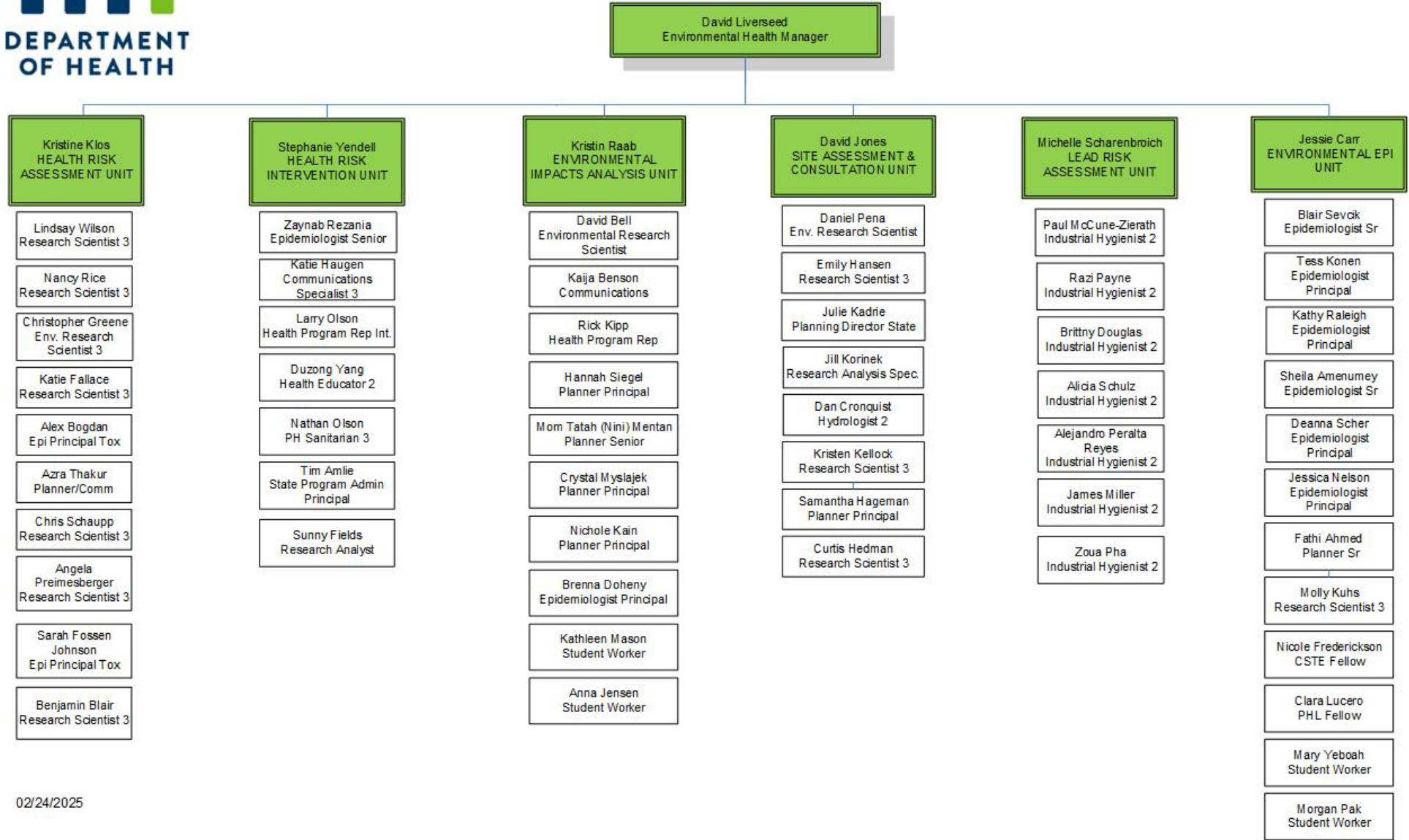




**Environmental Surveillance and Assessment Section**  
 Minnesota Department of Health  
 Division of Environmental Health



# Environmental Surveillance and Assessment Section Organizational Chart

This is the org chart for the Environmental Surveillance and Assessment Section in the Environmental Health Division of the Minnesota Department of Health.

## Manager's Office

David Liverseed is the Environmental Health Manager, with six-unit supervisors directly reporting to him.

## Health Risk Assessment Unit

The first unit is the Health Risk Assessment Unit, supervised by Kristine Klos, Research Scientist Supervisor 2. Kris supervises the following staff:

- Lindsay Wilson, Research Scientist 3
- Nancy Rice, Research Scientist 3
- Christopher Greene, Research Scientist 3
- Katie Fallace, Research Scientist 3
- Alex Bogdan, Epidemiologist Principal Toxicologist
- Azra Thakur, Planner/Communicator
- Chris Schaupp, Research Scientist 3
- Angela Preimesberger, Research Scientist 3
- Sarah Fossen Johnson, Epidemiologist Principal Toxicologist
- Benjamin Blair, Research Scientist 3

## Health Risk Intervention Unit

The second unit is the Health Risk Intervention Unit, supervised by Stephanie Yendell, Epidemiologist Supervisor Senior. Stephanie supervises the following staff:

- Zaynab Rezania, Epidemiologist Senior
- Katie Haugen, Communications Specialist 3
- Larry Olson, Health Program Representative Intermediate
- Duzong Yang, Health Educator 2
- Nathan Olson, Public Health Sanitarian 3
- Tim Amlie, State Program Administrator Principal
- Sunny Fields, Research Analyst

## Environmental Impact Analysis Unit

The third unit is the Environmental Impact Analysis Unit, supervised by Kristin Raab, Research Scientist Supervisor 2. Kristin supervises the following staff:

- David Bell, Environmental Research Scientist
- Kaija Benson, Communications Specialist 3
- Rick Kipp, Health Program Representative
- Hannah Siegel, Planner Principal
- Mom Tatah (Nini) Mentan, Planner Senior
- Crystal Myslajek, Planner Principal
- Nicole Kain, Planner Principal
- Brenna Doheny, Epidemiologist Principal
- Kathleen Mason, Student Worker
- Anna Jensen, Student Worker

## Site Assessment and Consultation Unit

The fourth unit is the Site Assessment & Consultation Unit, supervised by David Jones, Research Scientist Supervisor 2. David supervises the following staff:

- Daniel Pena, Environmental Research Scientist
- Emily Hansen, Research Scientist 3
- Julie Kadrie, Planning Director State
- Jill Korinek, Research Analysis Specialist
- Dan Cronquist, Hydrologist 2
- Kristen Kellock, Research Scientist 3
- Samantha Hageman, Planner Principal
- Curtis Hedman, Research Scientist 3

## Lead Risk Assessment Unit

The fifth unit is the Lead Risk Assessment Unit, supervised by Michelle Scharenbroich, Environmental Health Scientist Supervisor. Michelle supervises the following staff:

- Paul McCune-Zierath, Industrial Hygienist 2
- Razi Payne, Industrial Hygienist 2
- Brittny Douglas, Industrial Hygienist 2
- Alicia Schulz, Industrial Hygienist 2
- Alejandro Peralta Reyes, Industrial Hygienist 2
- James Miller, Industrial Hygienist 2
- Zoua Pha, Industrial Hygienist 2

## Environmental Epi Unit

The fifth unit is the Lead Risk Assessment Unit, supervised by Jessie Carr, Environmental Health Scientist Supervisor position. Jessie supervises the following staff:

- Blair Sevcik, Epidemiologist Senior
- Tess Konen, Epidemiologist Principal
- Kathy Raleigh, Epidemiologist Principal
- Sheila Amenumey, Epidemiologist Senior
- Deanna Scher, Epidemiologist Principal
- Jessica Nelson, Epidemiologist Principal
- Fathi Ahmed, Planner Senior
- Molly Kuhs, Research Scientist 3
- Nicole Frederickson, CSTE Fellow
- Clara Lucero, PHL Fellow
- Mary Yeboah, Student Worker
- Morgan Pak, Student Worker

Minnesota Department of Health  
Environmental Surveillance and Assessment Section  
625 N Robert St  
St. Paul, MN 55164  
[www.health.state.mn.us](http://www.health.state.mn.us)

Rev. 2/24/25

To obtain this information in a different format, call: 651-201-5000. Printed on recycled paper.