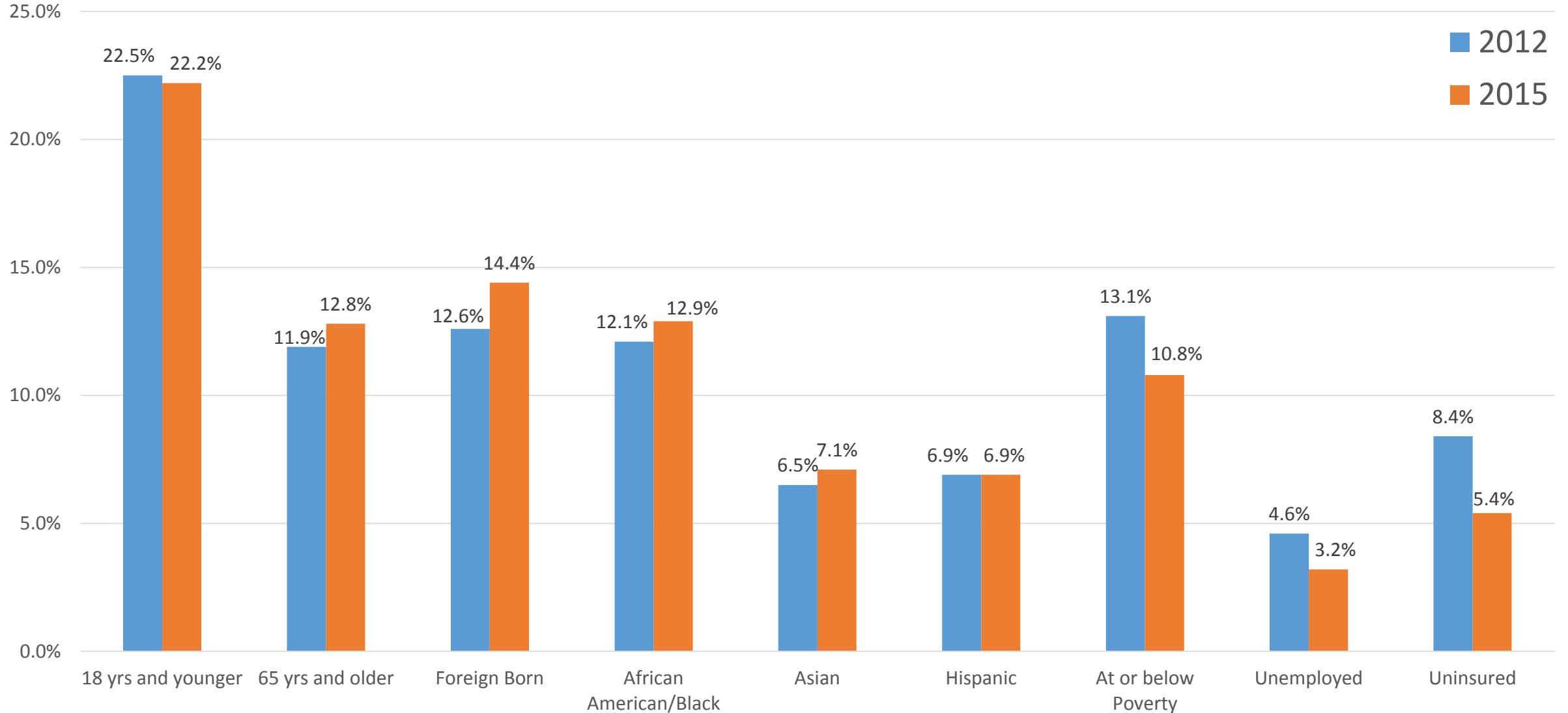


# Social determinants and race/ethnicity in Hennepin County

\* [http://unnaturalcauses.org/video\\_clips\\_detail.php?res\\_id=70](http://unnaturalcauses.org/video_clips_detail.php?res_id=70)

# Demographic and social changes

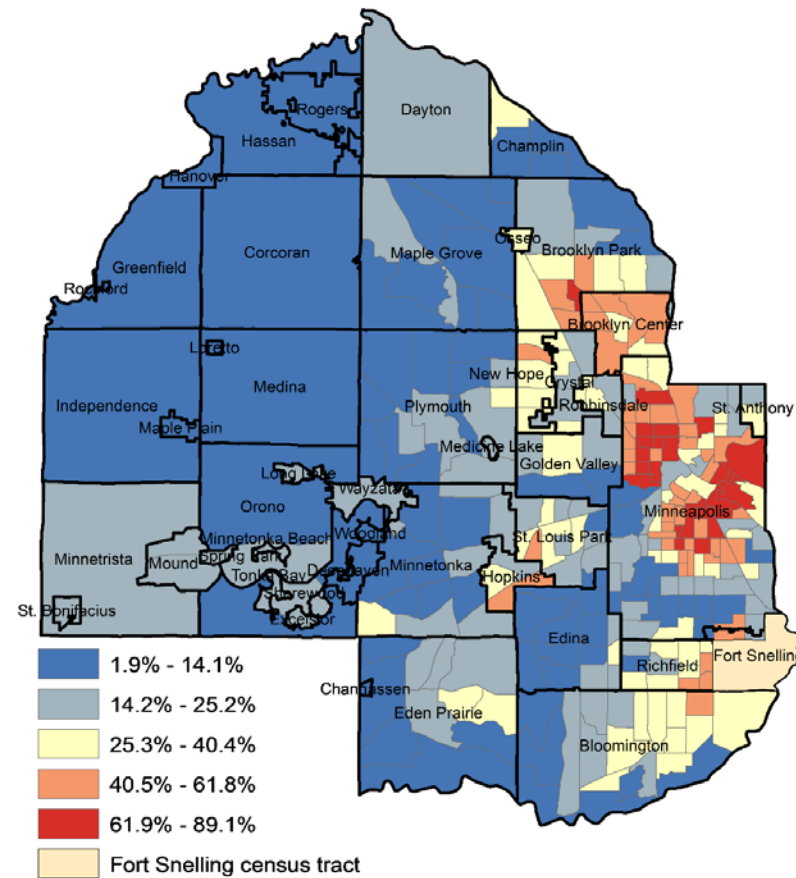
Hennepin County, 2012 vs 2015



Source: 2012 and 2015 American Community Survey 1 yr estimates

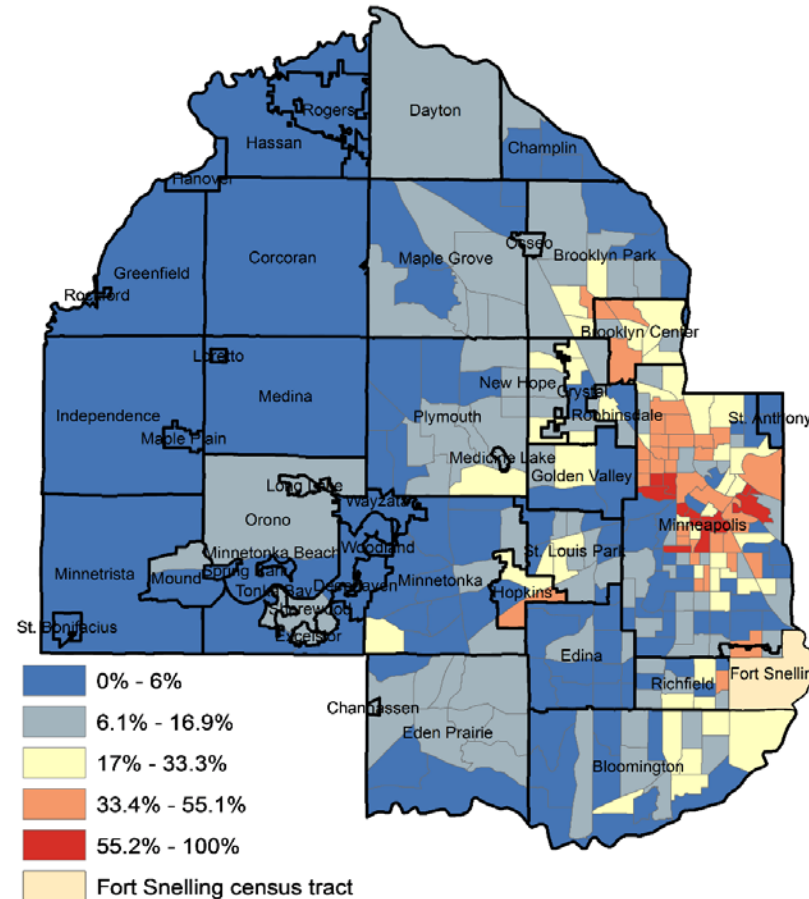


# Low-income: Percentage of population living under 200% of the federal poverty level



Source: 2010-2014 ACS 5 year estimates

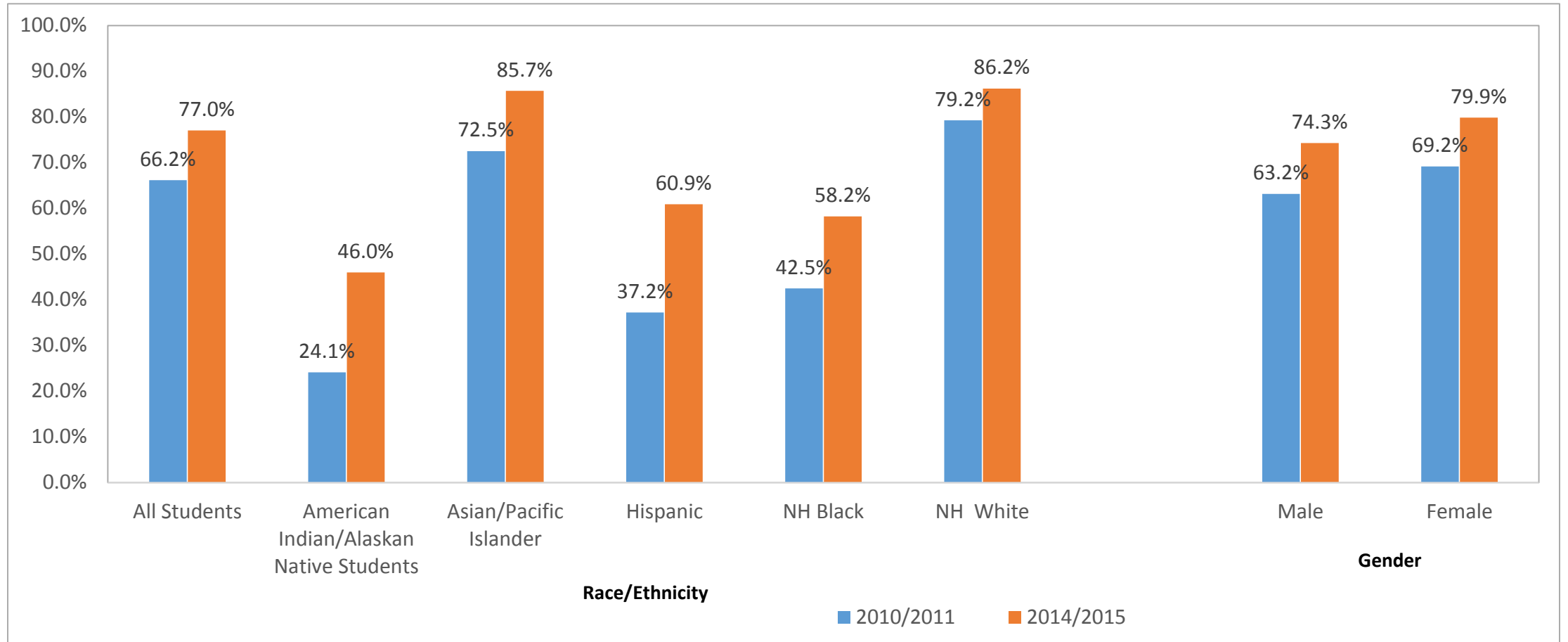
# Families in poverty: Percentage of families with children under 18 that are living at or below 100% of the federal poverty level



Source: 2010-2014 ACS 5 year estimates

**Graduation rate:** Percentage of students graduating in four years in the 2014-2015 school year, by district

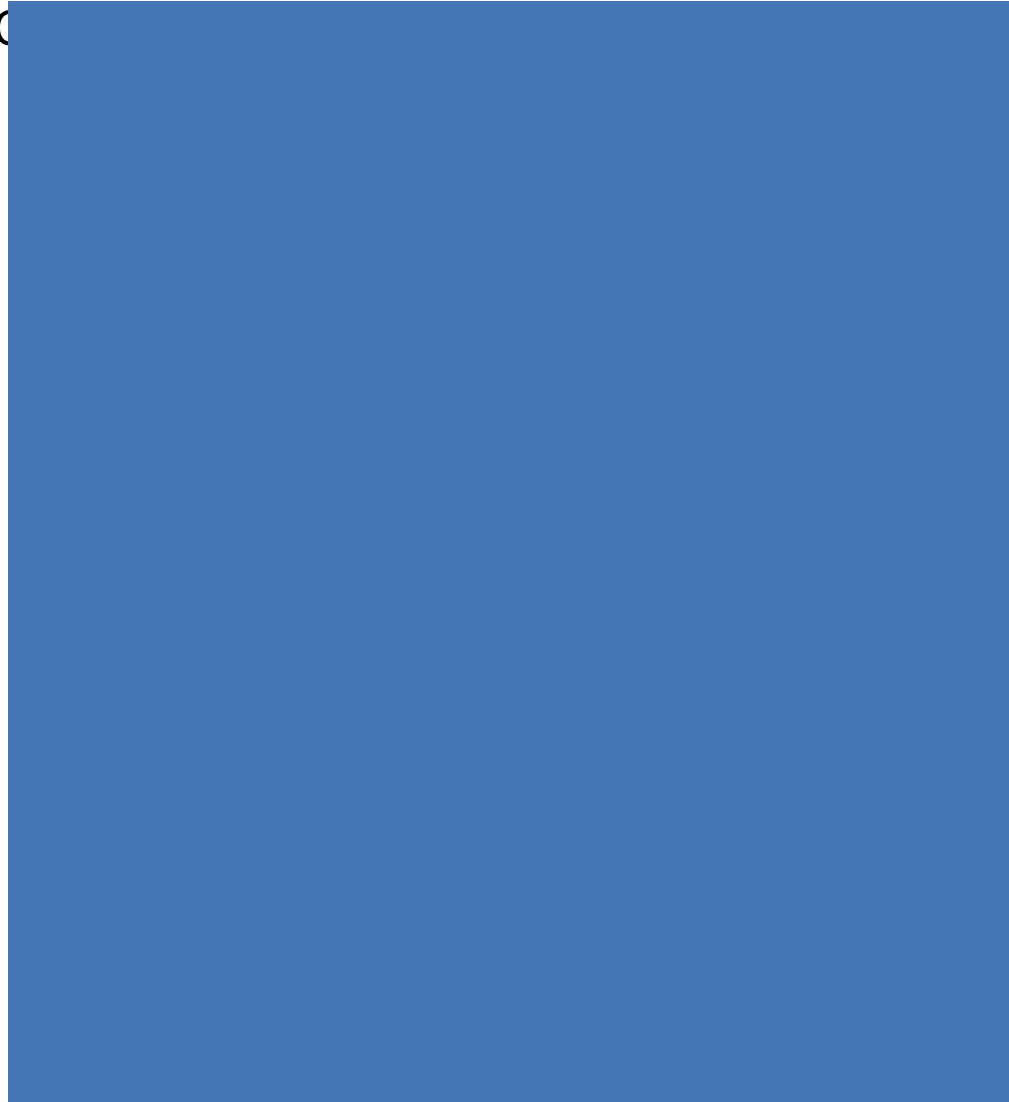
# Graduation rate: Percentage of students graduating in four years, by race/ethnicity and gender in Hennepin County, 2011 vs. 2015



Source: 2014-2015 MDE Data center

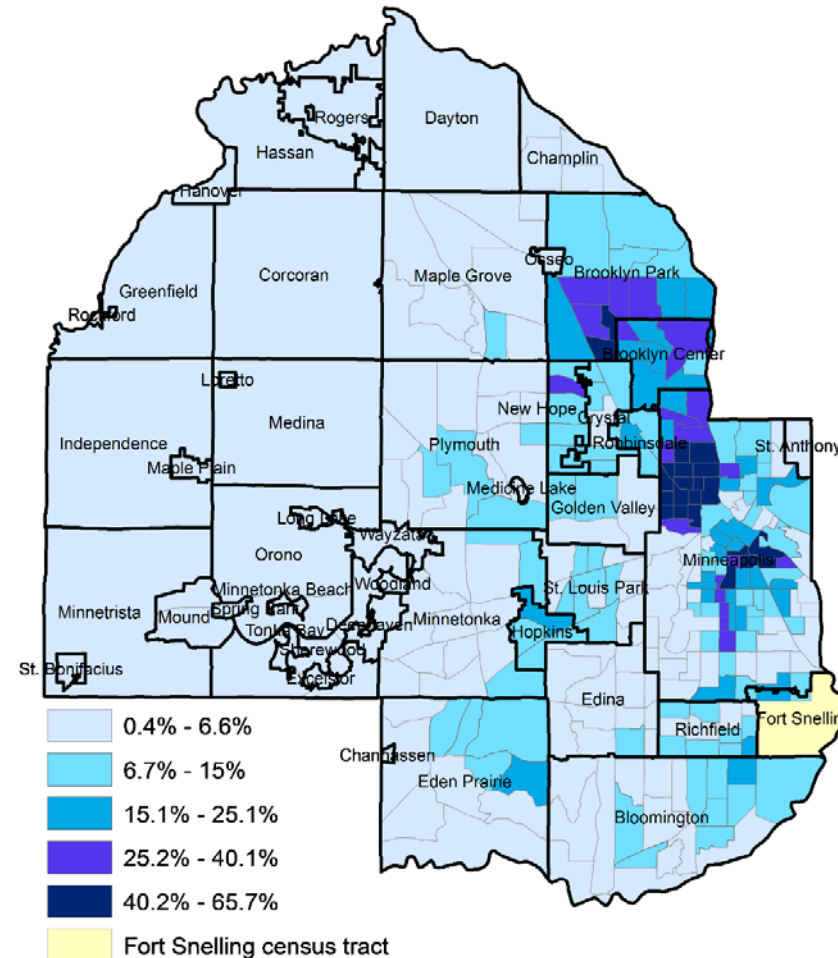


**Education:** Percentage of population 25 years and older without a high school diploma



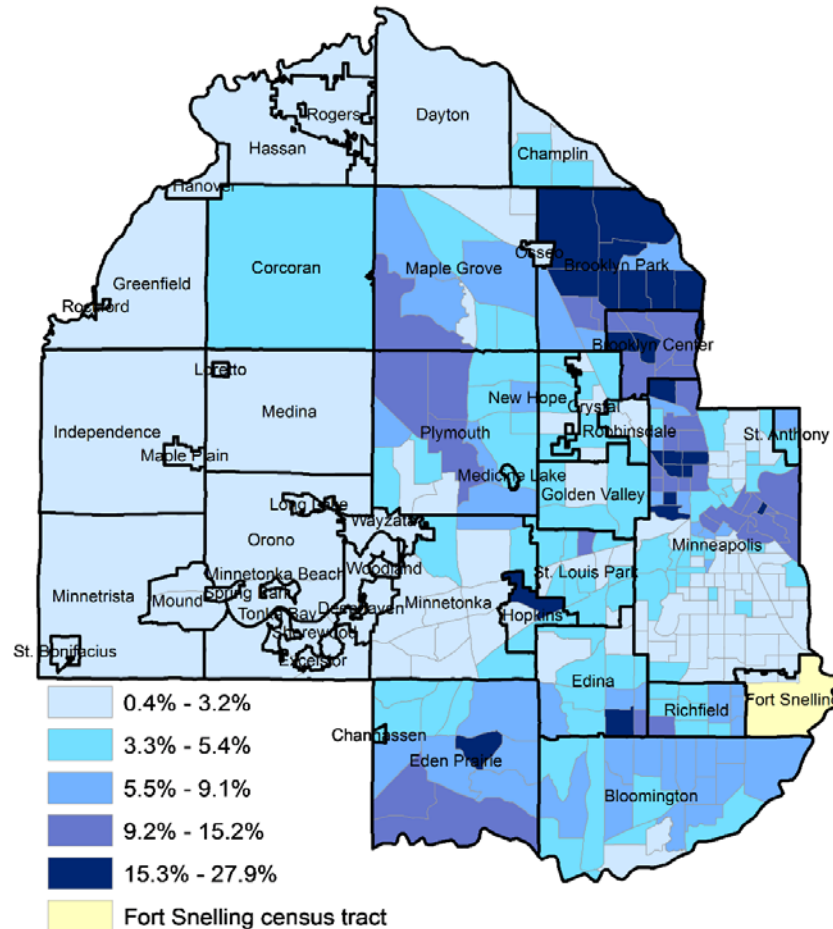
Source: 2010-2014 ACS 5 year estimates

# Non-Hispanic Black: Percentage of population that is non-Hispanic Black according to the 2010 US Census, by tract



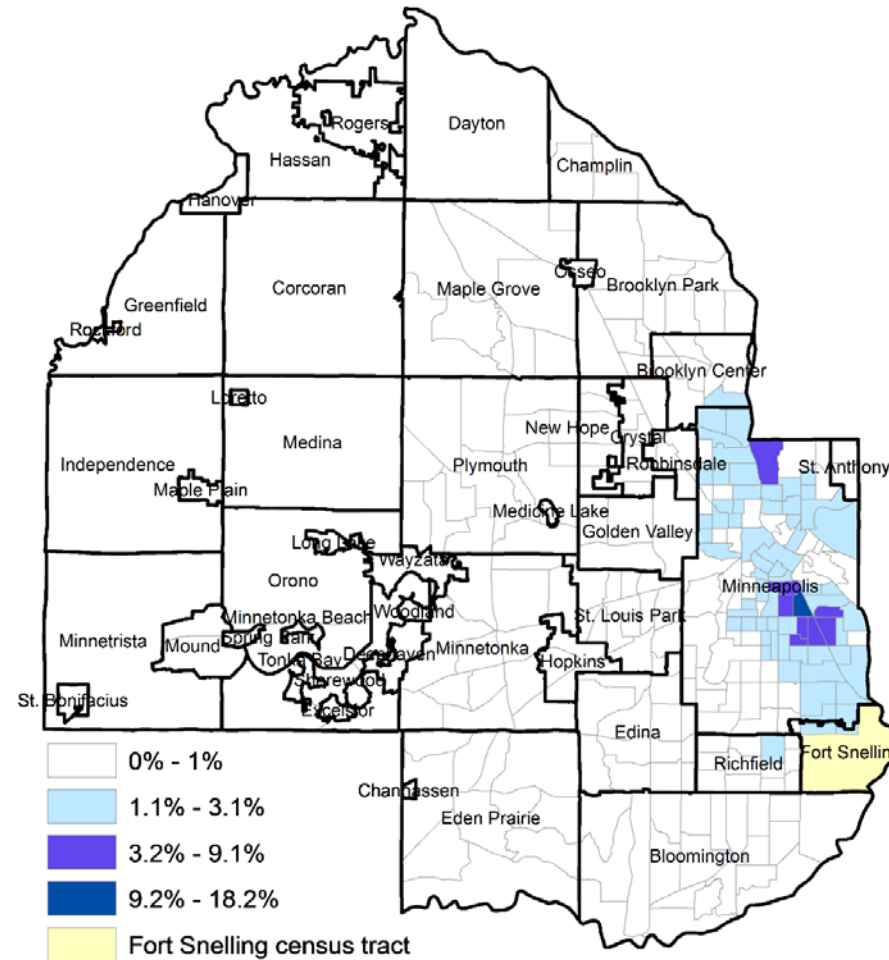
Source: 2010 US Census

# Non-Hispanic Asian: Percentage of population that is non-Hispanic Asian according to the 2010 US Census, by tract



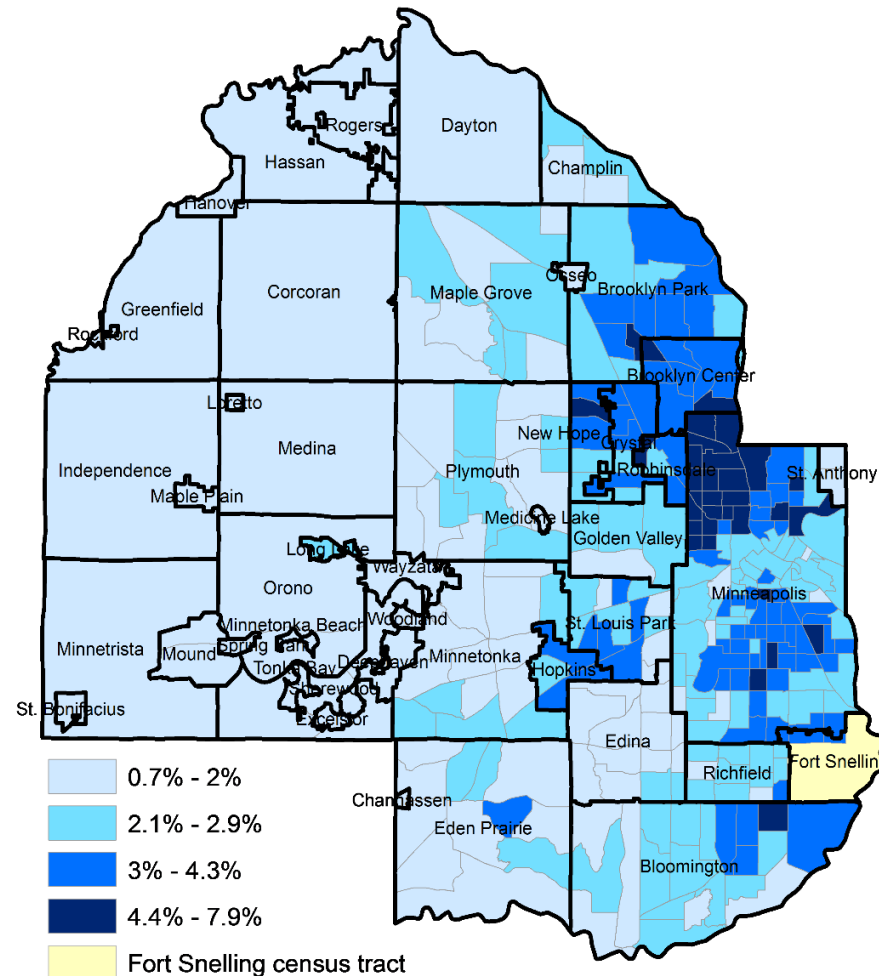
Source: 2010 US Census

# Non-Hispanic American Indian: Percentage of population that is non-Hispanic American Indian according to the 2010 US Census, by tract



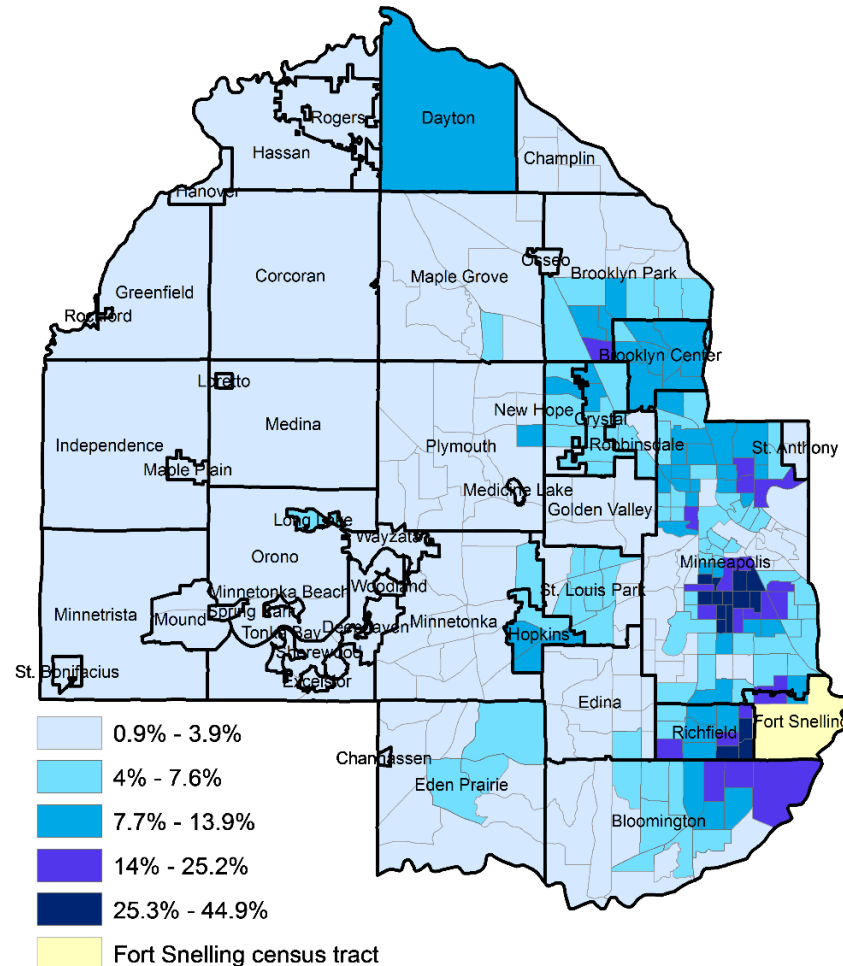
Source: 2010 US Census

# Non-Hispanic two or more races: Percentage of population that is non-Hispanic two or more races according to the 2010 US Census, by tract



Source: 2010 US Census

# Hispanic/Latino: Percentage of population that is Hispanic/Latino according to the 2010 US Census, by tract



Source: 2010 US Census

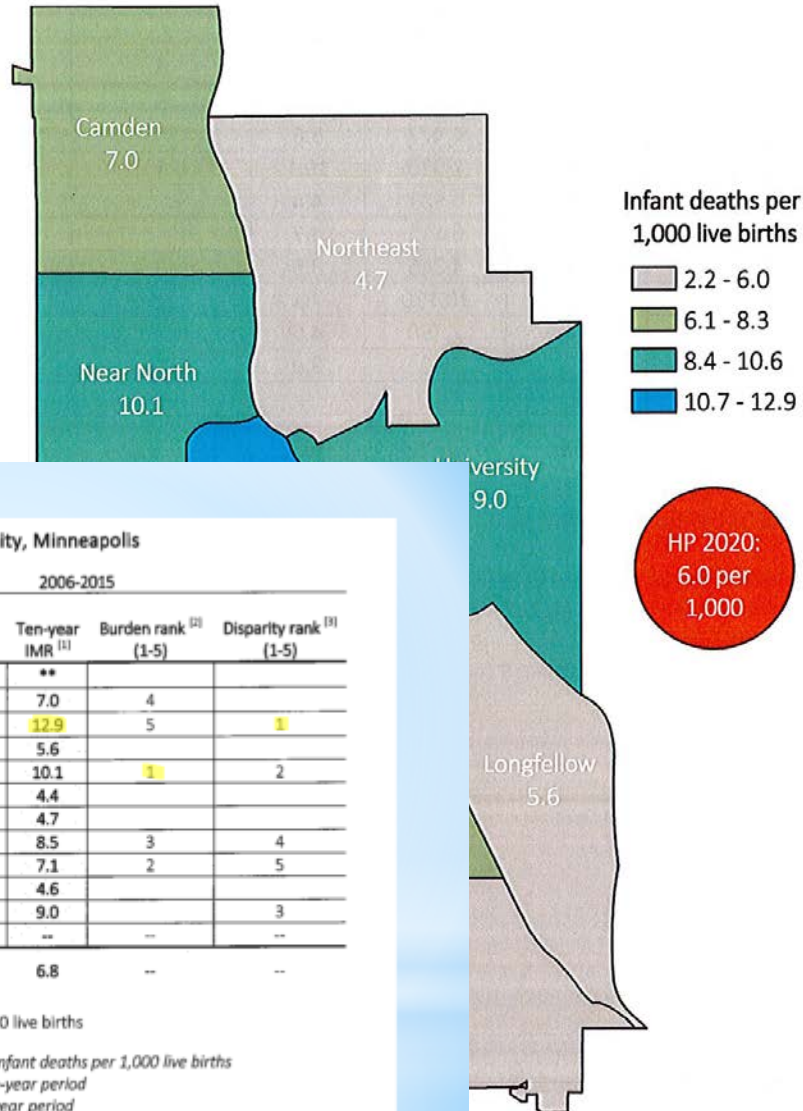


# Healthy Start Data Highlight: Infant Mortality by Minneapolis Community



# Infant mortality by community

Ten-year rate of infant deaths, by community, Minneapolis, 2006-2015



Number and rate of infant deaths, by community, Minneapolis

Minneapolis community	2015 infant deaths	2006-2015		Ten-year IMR <sup>[1]</sup>	Burden rank <sup>[2]</sup> (1-5)	Disparity rank <sup>[3]</sup> (1-5)
		Ten-year infant deaths	Ten-year births			
Calhoun Isle	0	5	2,250	**		
Camden	3	40	5,735	7.0	4	
→ Central	3	39	3,034	12.9	5	1
→ Longfellow	3	25	4,427	5.6		
→ Near North	10	76	7,536	10.1	1	2
Nokomis	1	29	6,551	4.4		
Northeast	4	29	6,115	4.7		
→ Phillips	3	41	4,845	8.5	3	4
→ Powderhorn	7	72	10,110	7.1	2	5
→ Southwest	3	34	7,450	4.6		
→ University	3	27	3,001	9.0		3
Unknown	0	2	200	--	--	--
Minneapolis total	40	419	61,254	6.8	--	--

Healthy People 2020 objective: 6.0 infant deaths per 1,000 live births

<sup>[1]</sup> IMR: Infant mortality rate, defined as the number of infant deaths per 1,000 live births

<sup>[2]</sup> Burden rank: Number-based rank (1-5) during the ten-year period

<sup>[3]</sup> Disparity rank: Rate-based rank (1-5) during the ten-year period

\*\* Suppressed: Rate is not stable, because it is based on fewer than 20 deaths.

## What does this tell us?

- Neighborhoods with the highest rates of infant mortality in Minneapolis
- Neighborhoods with rates above the Healthy People 2020 target
- Rates per 1000 births

## What doesn't this tell us?

- Poverty rate in neighborhoods
- Racial composition of neighborhoods
- Cause of infant deaths

\*\* Suppressed: Rate is not stable, because it is based on fewer than 20 deaths.

HP 2020: National Healthy People 2020 objective, available online at: <https://www.healthypeople.gov/>