

# Supporting Newcomers in Accessing Healthcare

May 18, 2026

Minnesota Center of Excellence in Newcomer Health

# Acknowledgment

The Minnesota Center for Excellence in Newcomer Health is supported by *1 NU50CK000563* from the U.S. Centers for Disease Control and Prevention.

The Minnesota Medical Association facilitated the CMEs. Full or partial CMEs/CEUs will be awarded based on actual attendance time.

No financial conflicts of interest.



# Learning Objectives

- Describe changes to the United States Refugee Admissions Program (USRAP) and access to care for newcomers.
- List three strategies to fill gaps in access to care for newcomers.
- Explain three approaches you can adapt to support newcomers in establishing a healthy life in the U.S.



# Agenda

- Background
- Introductions
- Structured Discussion
- Q&A



# Today's Speakers



**Elizabeth Edghill**

Family Health Centers –  
Louisville



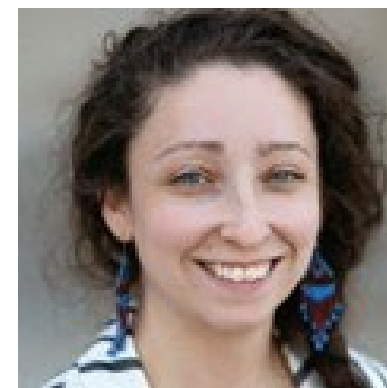
**Sheyanga Beecher**

Hennepin Healthcare



**Jessica Deffler**

Wyss Wellness Center




**Lily Rubenstein**

Minnesota Department of Health  
(Moderator)

# Interactive Slido Polls

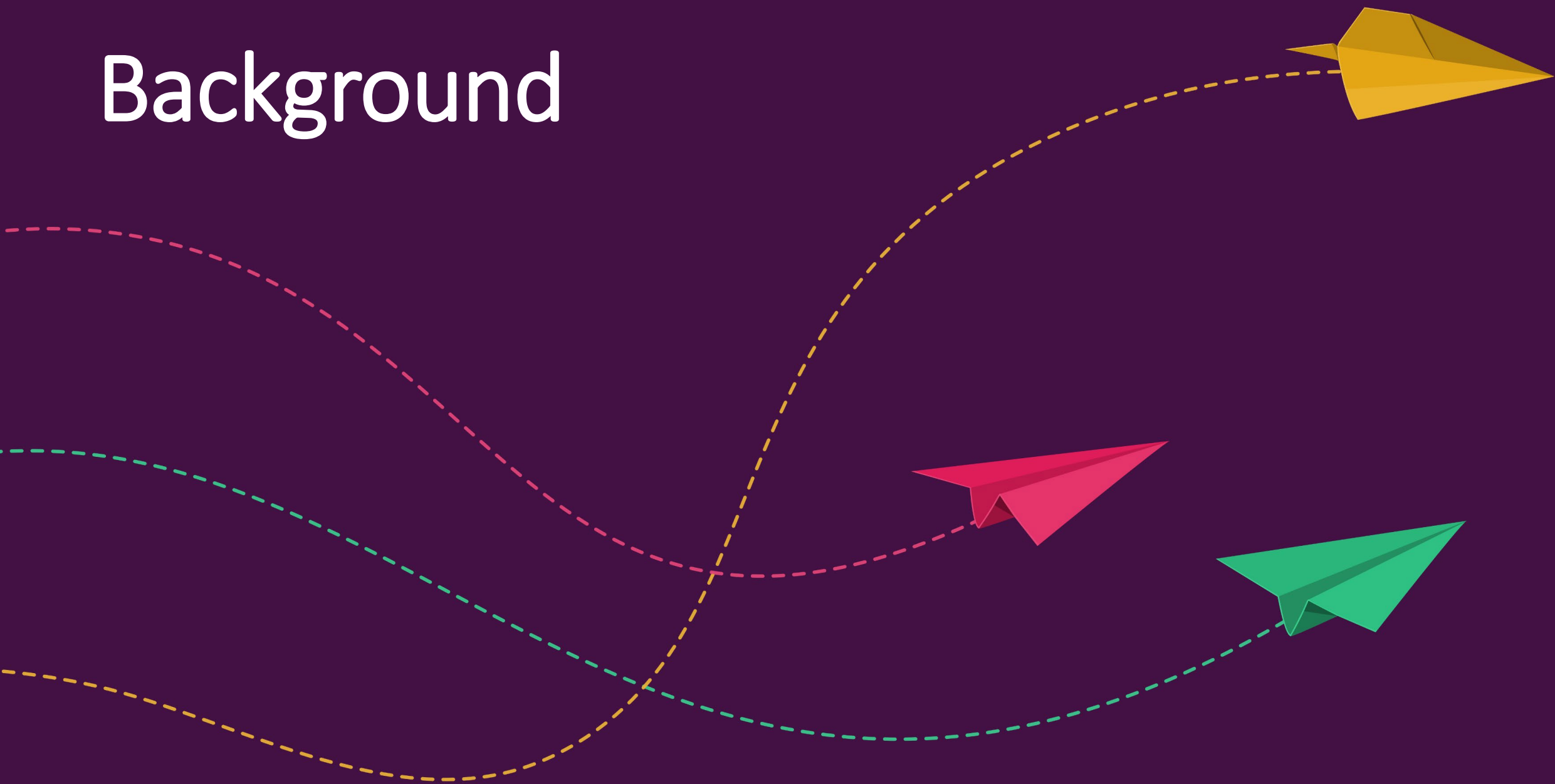
[www.slido.com](https://www.slido.com)  
#newcomer  
care

Join at  
**slido.com**  
**#newcomer**

 Passcode: **care**

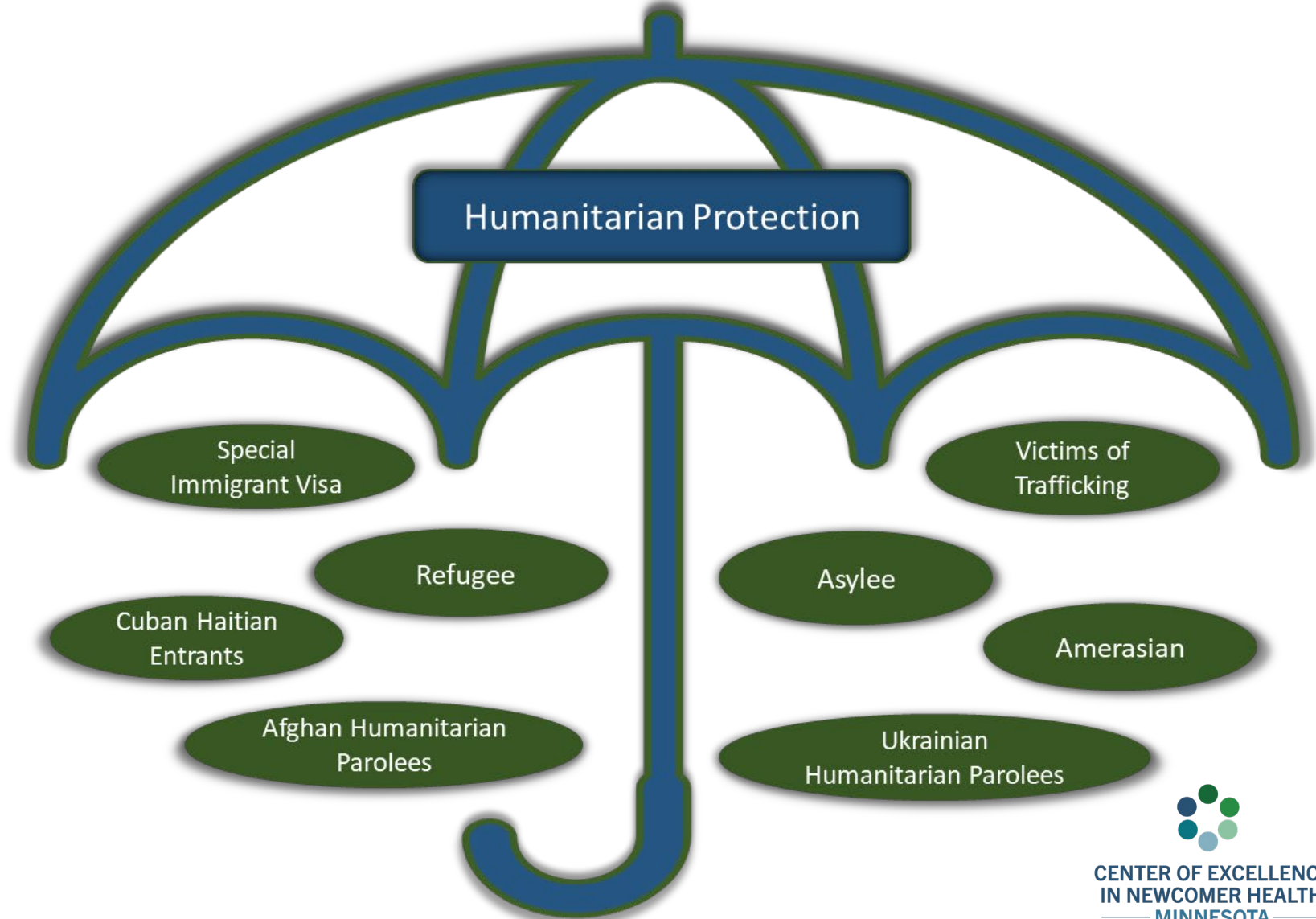


# Background

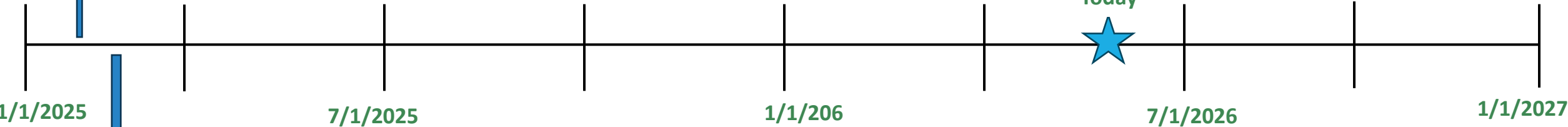
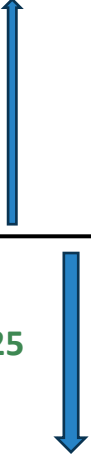


# Humanitarian Protection Statuses

*The mission of the Office of Refugee Resettlement (ORR) is to promote the health, well-being, and stability of refugees, unaccompanied alien children, and other eligible individuals and families, through culturally responsive, trauma-informed, and strengths-based services.*



President Trump's  
Inauguration  
  
Executive Order 14163  
"Realigning the United  
States Refugee  
Admissions Program."



Executive Order 14204  
"Addressing Egregious  
Actions of the Republic  
of South Africa."

# United States Refugee Admissions Program

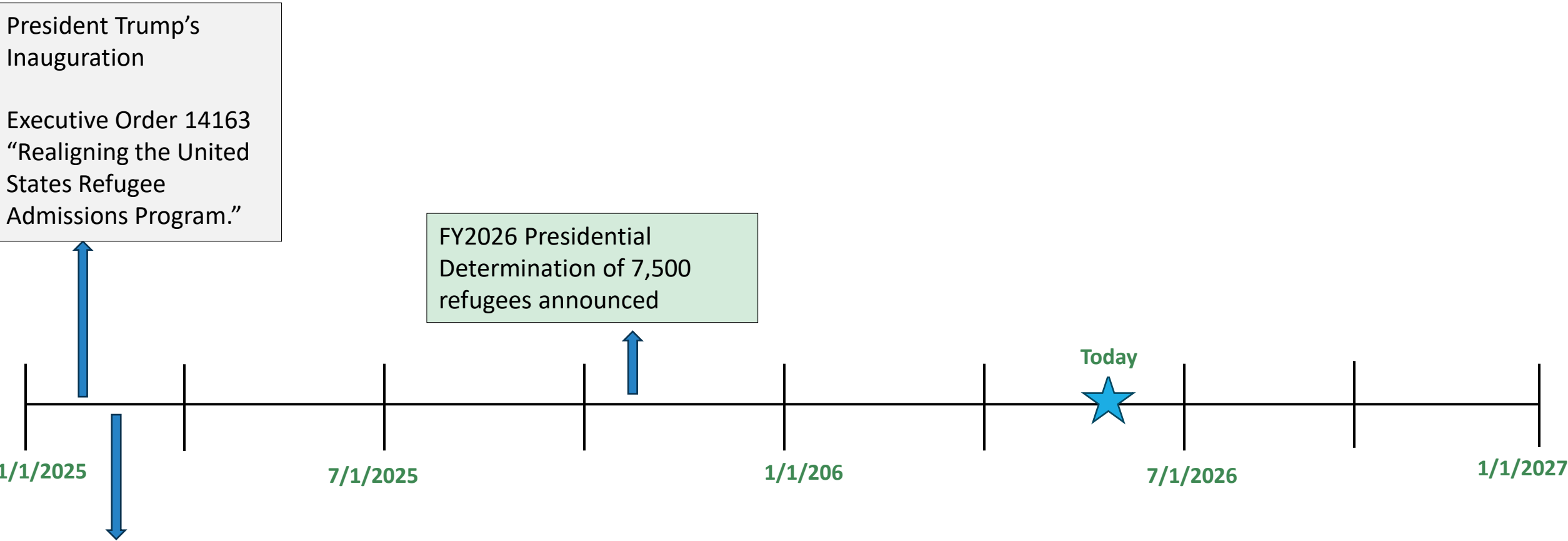
- **January 20, 2025:** Executive Order 14163 “Realigning the United States Refugee Admissions Program.”
  - Suspended refugee admissions.
- **February 7, 2025:** Executive Order 14204 “Addressing Egregious Actions of the Republic of South Africa.”
  - Prioritize admission and resettlement through USRAP for Afrikaners in South Africa who are victims of unjust racial discrimination.



President Trump's Inauguration  
Executive Order 14163  
"Realigning the United States Refugee Admissions Program."

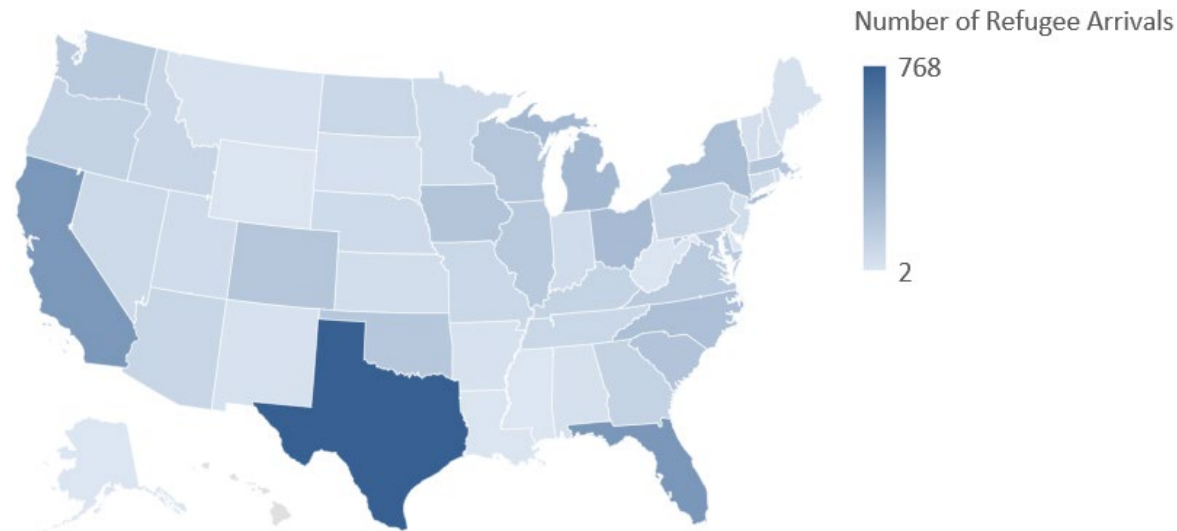
FY2026 Presidential Determination of 7,500 refugees announced

Executive Order 14204  
"Addressing Egregious Actions of the Republic of South Africa."



# U.S. Refugee Admissions Program, FY2026

- FY 2026 Presidential Determination announced **October 31, 2025**: 7,500
- As of **March 30, 2026**: 6,069 arrivals
  - 6,066 from South Africa and 3 from Afghanistan



Top 10 States	Number of Refugee Arrivals
Texas	768
Florida	451
California	450
Michigan	261
Ohio	245
New York	232
North Carolina	219
South Carolina	194
Iowa	191
Wisconsin	185

Data provided by the U.S. Department of State Bureau of Population, Refugees and Migration (PRM) refugee case management system

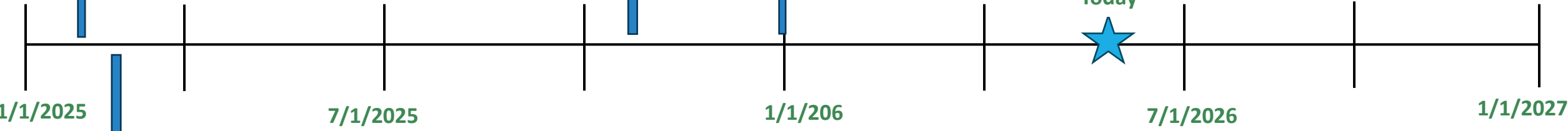


President Trump's Inauguration  
Executive Order 14163  
"Realigning the United States Refugee Admissions Program."

ORR takes over ALL domestic resettlement activities

FY2026 Presidential Determination of 7,500 refugees announced

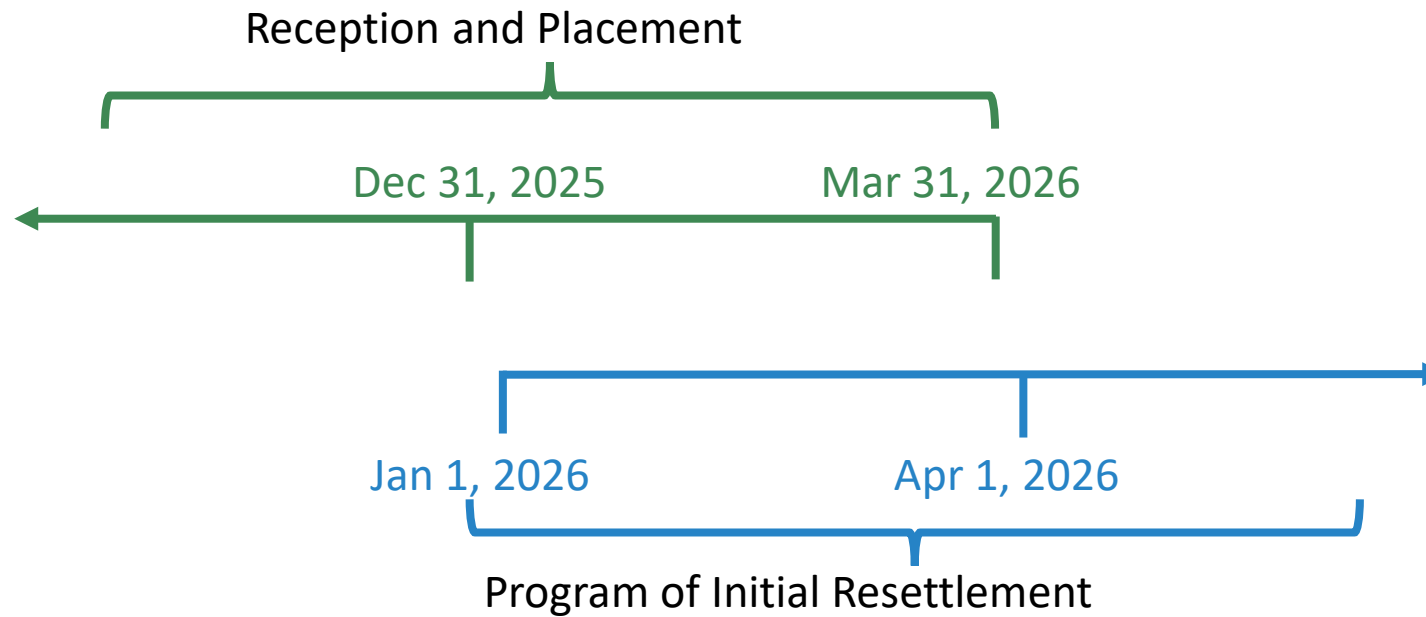
Executive Order 14204  
"Addressing Egregious Actions of the Republic of South Africa."

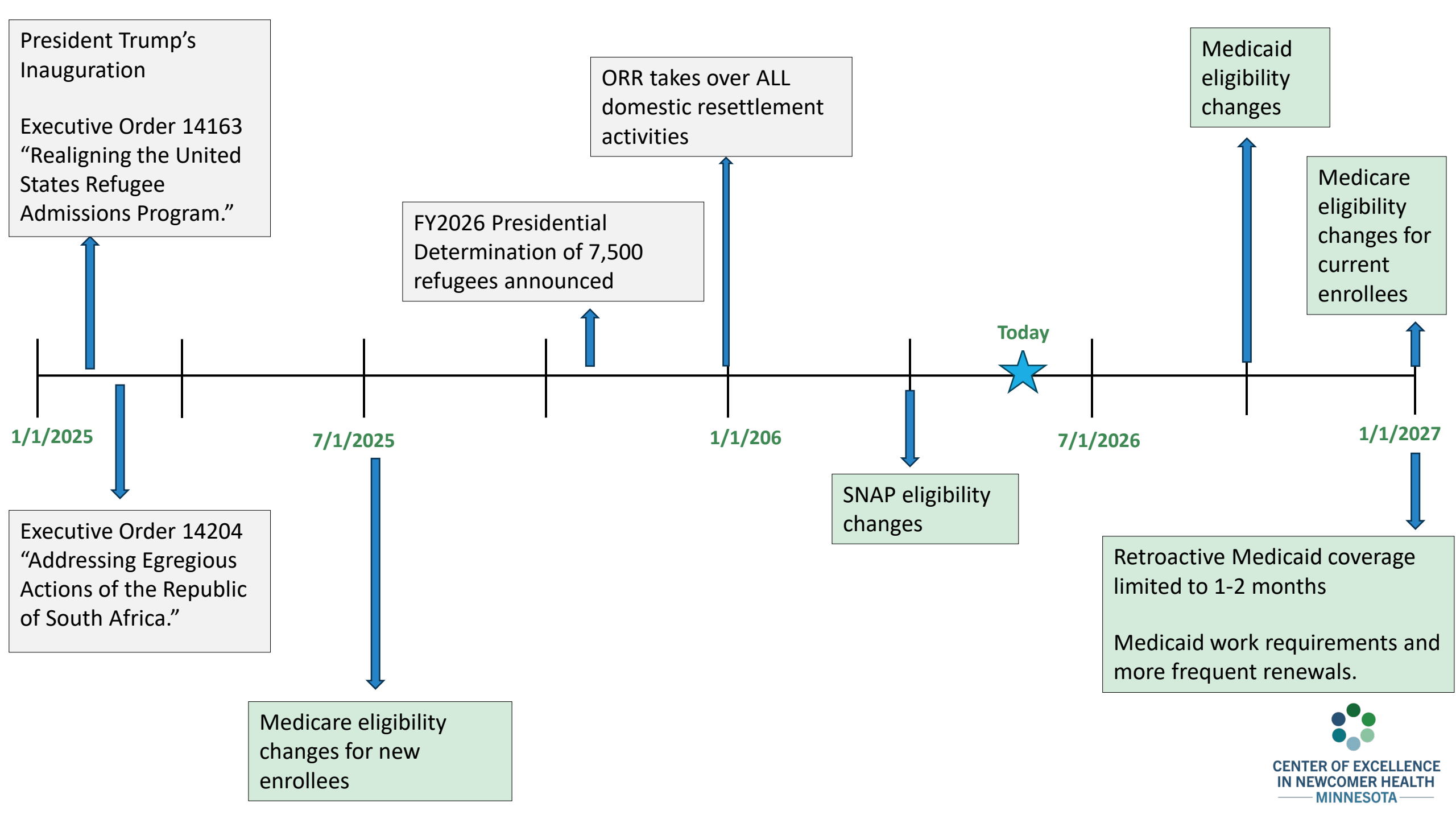


# United States Refugee Admissions Program

**January 1, 2026:** Administration of initial resettlement transferred from the US Department of State to the Office of Refugee Resettlement, Office of the Administration for Children & Families, Department of Health and Human Services.

- Program of Initial Resettlement (formerly "Reception and Placement")





President Trump's Inauguration

Executive Order 14163 "Realigning the United States Refugee Admissions Program."

FY2026 Presidential Determination of 7,500 refugees announced

ORR takes over ALL domestic resettlement activities

Today

Medicaid eligibility changes

Medicare eligibility changes for current enrollees

SNAP eligibility changes

Retroactive Medicaid coverage limited to 1-2 months

Medicaid work requirements and more frequent renewals.

Medicare eligibility changes for new enrollees

# H.R.1 Effects on Federal Benefits

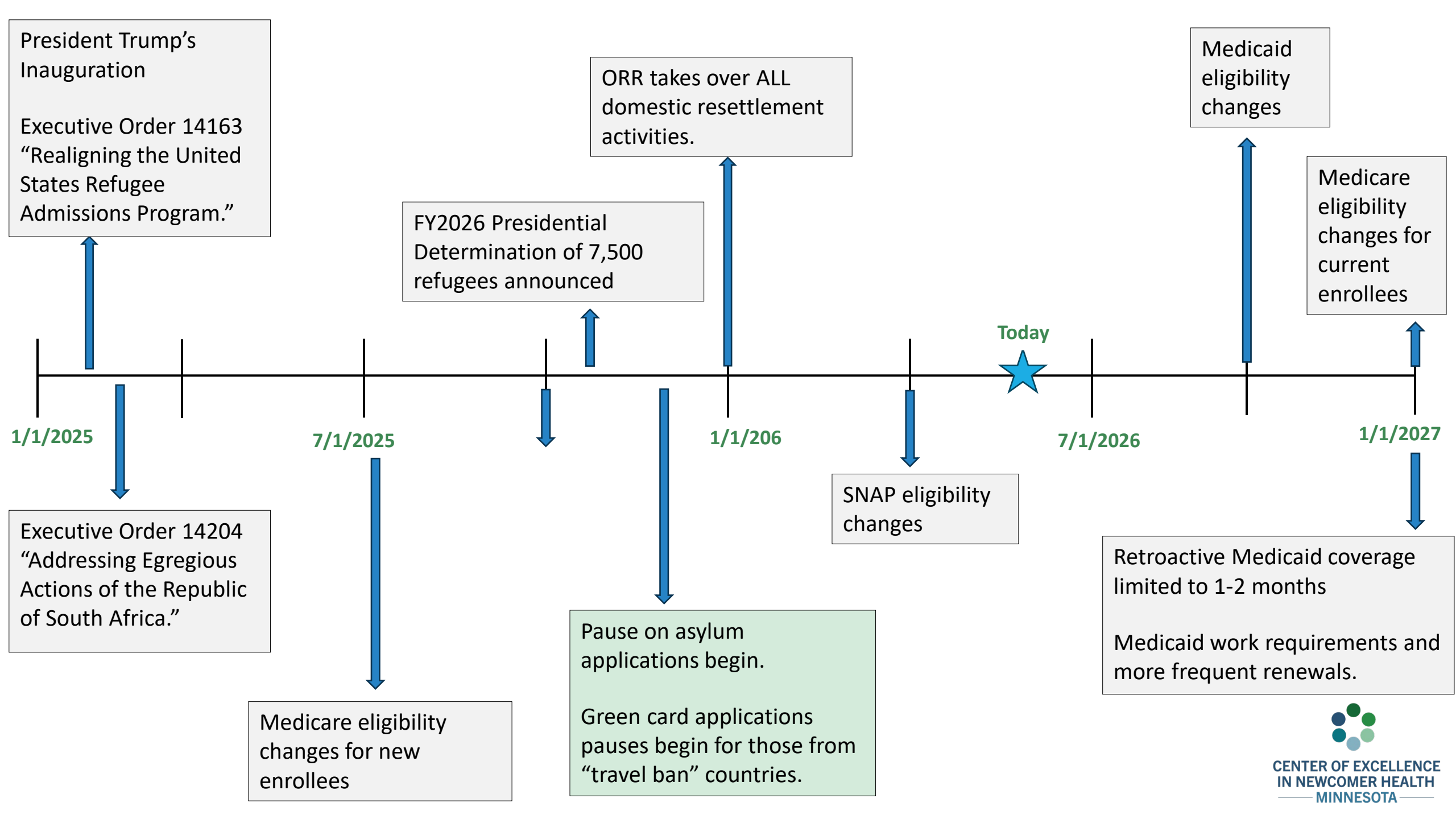
Program	Change	Effective Date
SNAP	Eligibility limited to U.S. citizens, LPRs, CHEs, and COFA residents.	March 1, 2026
Medicaid	Eligibility limited to U.S. citizens, LPRs, CHEs, and COFA residents.	October 1, 2026
	Retroactive coverage limited to 1-2 months, work requirements, and more frequent renewals.	January 1, 2027
Medicare	Eligibility limited to U.S. citizens, LPRs, CHEs, and COFA residents.	July 4, 2025 (new enrollees) January 1, 2027 (current enrollees)

**LPR:** Lawful Permanent Resident

**CHE:** Cuban-Haitian Entrant

**COFA:** Compacts of Free Association (Federated States of Micronesia, Republic of the Marshall Islands, and Palau)





President Trump's Inauguration

Executive Order 14163 "Realigning the United States Refugee Admissions Program."

ORR takes over ALL domestic resettlement activities.

FY2026 Presidential Determination of 7,500 refugees announced

Medicaid eligibility changes

Medicare eligibility changes for current enrollees

Executive Order 14204 "Addressing Egregious Actions of the Republic of South Africa."

Medicare eligibility changes for new enrollees

Pause on asylum applications begin.

Green card applications pauses begin for those from "travel ban" countries.

SNAP eligibility changes

Retroactive Medicaid coverage limited to 1-2 months

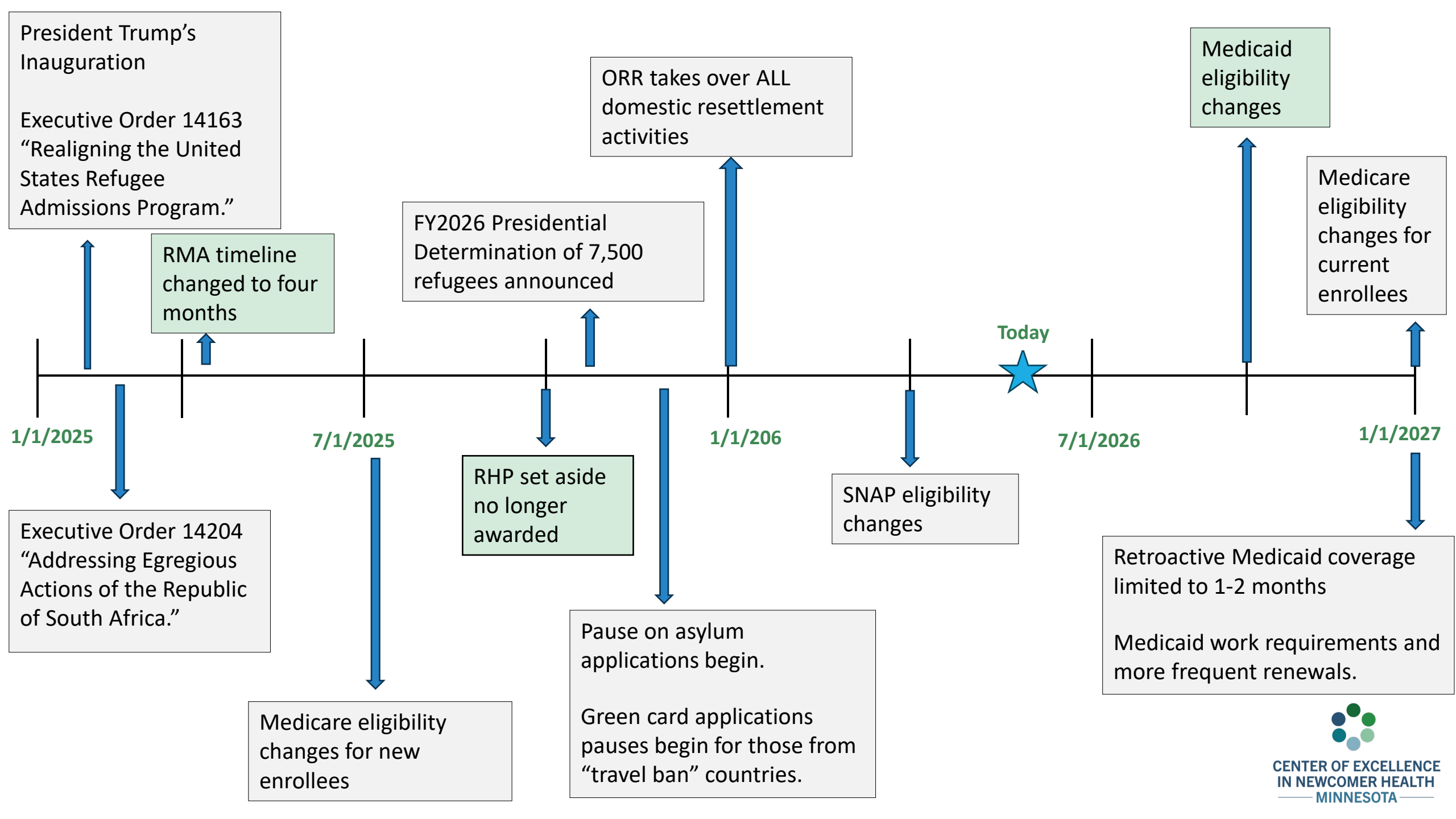
Medicaid work requirements and more frequent renewals.

Today

# Changes and Uncertainty in Humanitarian Protection Statuses

- Changes in Immigration Enforcement strategies
  - Re-vetting and re-interviewing of refugees who have not adjusted their status.
  - Increased immigration enforcement operations.
- Humanitarian Parole changes
  - New USCIS fee for parole and re-parole.
- Processing delays and suspension, travel ban effects
  - Significant delays and backlogs for adjustment of status application. Processing pause for “travel ban” countries.
  - Afghan nationals (including Special Immigrant Visa holders) subject to travel ban.





President Trump's Inauguration

Executive Order 14163 "Realigning the United States Refugee Admissions Program."

RMA timeline changed to four months

Executive Order 14204 "Addressing Egregious Actions of the Republic of South Africa."

Medicare eligibility changes for new enrollees

FY2026 Presidential Determination of 7,500 refugees announced

RHP set aside no longer awarded

ORR takes over ALL domestic resettlement activities

Pause on asylum applications begin.

Green card applications pauses begin for those from "travel ban" countries.

Today

SNAP eligibility changes

Medicaid eligibility changes

Medicare eligibility changes for current enrollees

Retroactive Medicaid coverage limited to 1-2 months

Medicaid work requirements and more frequent renewals.

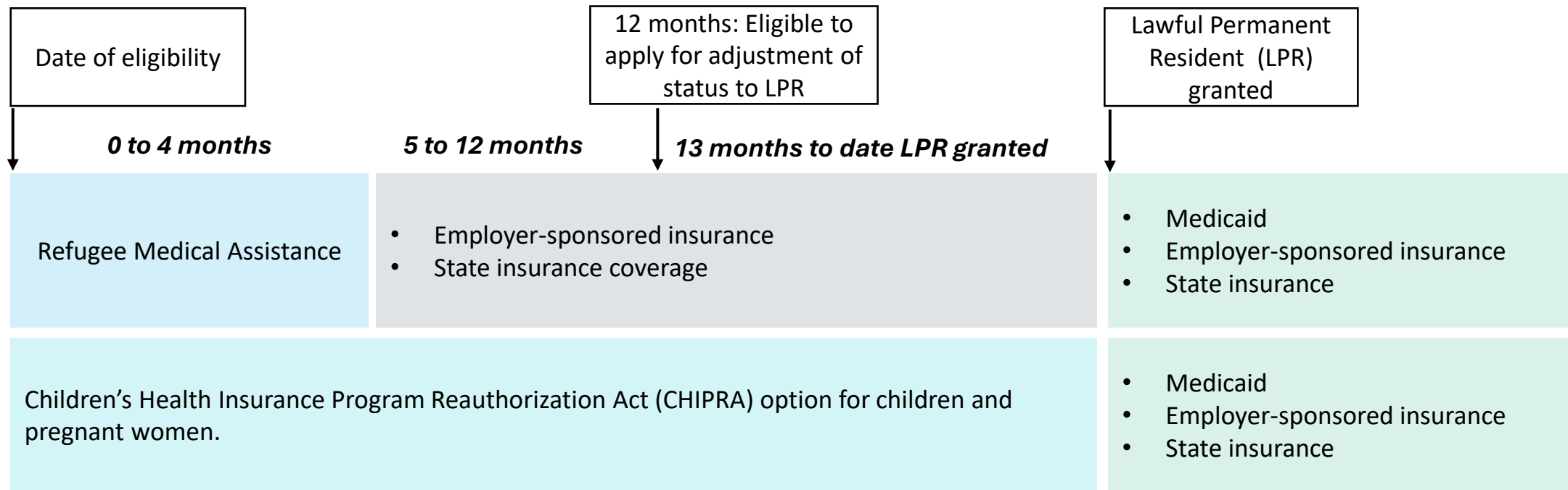
# Federal program changes: Refugee Health Promotion and Refugee Medical Assistance


- **May 5, 2025:** Refugee Medical Assistance (RMA) eligibility period shortened to four months.
- **October 1, 2025:** Dedicated Refugee Health Promotion (RHP) funding no longer awarded. States may continue using other ORR funding for health activities per their discretion.
  - Supports community organizations, local resettlement agencies, clinics, etc. providing health-related support during the first five years after arrival.
  - Activities include health navigation support, community health workers, and health education.
- **October 1, 2026:** Refugees ineligible for Medicaid; most states will now rely on RMA for the Domestic Medical Exam and other initial health care needs.



# Health Insurance

- Options will vary by state
  - Refugees may be eligible for state insurance after RMA eligibility period and before becoming eligible for Medicaid upon getting LPR status.
  - Children and pregnant people may be able to access insurance through Children’s Health Insurance Program (CHIP) funding.





**We want to  
hear from you!**

# Family Health Centers, Inc. (FHC)

## Elizabeth Edghill, BA, RN, BSN

### *Louisville, Kentucky*

- **Setting:** Health system across 8 locations in Louisville, KY. FHC-Americana is located on the campus of the Americana World Community Center; partnership with several other non-profits.
- **Specialties and Services:** Refugee services including the Domestic Medical Exam (DME), Refugee & Immigrant-focused CHWs, primary care across the lifespan in addition to specialty services and programs, including Survivors of Torture Services.
- **Primary population:** ~40,000 patients per year; ~40% of them preferring to receive services in a language other than English; a large refugee and Cuban patient population.
- **What is your reimbursement model?** FQHC with sliding fee discounts.
- [Family Health Centers](https://www.fhclouisville.org/) (<https://www.fhclouisville.org/>)



# Hennepin Healthcare

Sheyanga Beecher, CNP, MSN, MPH

*St. Paul - Minneapolis, Minnesota*

- **Setting:** Provision of care within a small mobile unit (parked outside patient homes) and via pop up clinics at community spaces (schools, Head Start Centers, shelters and places of worship).
- **Specialties:** Pediatric primary care, postpartum dyadic care for birthing parent and newborn together, most recently prenatal care as well as vaccine only clinics.
- **Primary population:** Predominantly Black, Indigenous, and people of color (BIPOC) patients who are underinsured, uninsured, and living in high-risk zip codes within the twin cities metro (not county specific).
- **Reimbursement model:** Insurance, when possible, and grant funds help support underinsured or uninsured patients. Grants and philanthropy help support non-billable staff.
- **Hennepin Healthcare: Mobile Health** (<https://hennepinhealthcare.org/services/primary-care/mobile-health>)



# Hansjorg Wyss Wellness Center

Jessica Deffler, MD

*Philadelphia, Pennsylvania*

- **Setting:** A community-based primary care office affiliated with Thomas Jefferson University Hospital. Located in a culturally and linguistically diverse neighborhood in South Philadelphia.
- **Specialties:** On-site family medicine for all ages - newborns and pediatrics, women's health, prenatal care. Domestic Medical Exams (DME), civil surgeon exams, and continued primary care for refugees.
- **Primary population:** Includes newcomers including Syrians, Afghans, Rohingya, Congolese, Venezuelans, as well as immigrants from Mexico and Central America and Southeast Asia.
- **Reimbursement model:** Uninsured patients covered with the Jefferson financial assistance program.
- **Wyss Wellness Center** ([www.jeffersonhealth.org/locations/wyss-wellness-center](http://www.jeffersonhealth.org/locations/wyss-wellness-center))





# Structured Discussion





**Thank you!**

Questions



# Center of Excellence Reminders!

- **Subscribe to Center of Excellence in Newcomer Health Updates**  
([https://public.govdelivery.com/accounts/MNMDH/subscriber/new?topic\\_id=MNMDH\\_463](https://public.govdelivery.com/accounts/MNMDH/subscriber/new?topic_id=MNMDH_463))  
for training announcements and other guidance and resources.
- **Trainings: Minnesota Center of Excellence in Newcomer Health**  
([www.health.state.mn.us/communities/rih/coe/webinars.html](http://www.health.state.mn.us/communities/rih/coe/webinars.html))



Thank You!

Please remember to  
complete your  
evaluation



# References

- Office of Refugee Resettlement <https://acf.gov/orr>
- Executive Order 14163 “Realigning the United States Refugee Admissions Program.” <https://www.whitehouse.gov/presidential-actions/2025/01/realigning-the-united-states-refugee-admissions-program/>
- Executive Order 14204 “Addressing Egregious Actions of the Republic of South Africa.” <https://www.whitehouse.gov/presidential-actions/2025/02/addressing-egregious-actions-of-the-republic-of-south-africa/>
- ORR DCL 25-13 Reduction of the Refugee Cash Assistance and Refugee Medical Assistance Eligibility Period <https://acf.gov/orr/policy/dear-colleague-letters/25-13>
- ORR Dear Colleague Letter 26-02 Conclusion of Refugee Support Services Set-Aside Awards <https://acf.gov/orr/dcl-26-02>
- Presidential Determination on Refugee Admissions for Fiscal Year 2026 <https://www.federalregister.gov/documents/2025/10/31/2025-19752/presidential-determination-on-refugee-admissions-for-fiscal-year-2026>
- USCIS PM-602-0192 Hold and Review of all Pending Asylum Applications and all USCIS Benefit Applications Filed by Aliens from High-Risk Countries <https://www.uscis.gov/sites/default/files/document/policy-alerts/PM-602-0192-PendingApplicationsHighRiskCountries-20251202.pdf>
- Expanded “Travel Ban” to Take Effect January 1, 2026 <https://www.congress.gov/crs-product/IN12631>
- Presidential Determination on Transferring the United States Program of Initial Refugee Resettlement <https://www.federalregister.gov/documents/2025/10/31/2025-19753/presidential-determination-on-transferring-the-united-states-program-of-initial-refugee-resettlement>
- USCIS PM-602-0194 Hold and Review of USCIS Benefit Applications Filed by Aliens from Additional High-Risk Countries <https://www.uscis.gov/sites/default/files/document/policy-alerts/PM-602-0194-PendingApplicationsAdditionalHighRiskCountries-20260101.pdf>
- Supplemental Nutrition Assistance Program (SNAP) Implementation of the One Big Beautiful Bill Act of 2025 – Alien SNAP Eligibility <https://www.fns.usda.gov/snap/obbb-alien-eligibility>
- USCIS Update on USCIS’ Strengthened Screening and Vetting <https://www.uscis.gov/newsroom/alerts/update-on-uscis-strengthened-screening-and-vetting>
- H.R.1 - An act to provide for reconciliation pursuant to title II of H. Con. Res. 14. <https://www.congress.gov/bill/119th-congress/house-bill/1/text>
- CMS SHO #26-001 Implementation of Section 71109 “Alien Medicaid Eligibility” of the Working Families Tax Cut Legislation (Public Law 119-21) <https://www.medicaid.gov/federal-policy-guidance/downloads/sho26001.pdf>
- USCIS Implements New Immigration Parole Fee Required by H.R. 1 <https://www.uscis.gov/newsroom/alerts/uscis-implements-new-immigration-parole-fee-required-by-hr-1>
- USCIS DHS Launches Landmark USCIS Fraud Investigation in Minnesota <https://www.uscis.gov/newsroom/news-releases/dhs-launches-landmark-uscis-fraud-investigation-in-minnesota>
- USCIS Update on USCIS’ Strengthened Screening and Vetting <https://www.uscis.gov/newsroom/alerts/update-on-uscis-strengthened-screening-and-vetting>

