

Center of Excellence in Newcomer Health Webinar

From Arrival to Aisles: Pharmacy Support for Newcomers



Tuesday, September 23, 2025

2:30 – 3:30 p.m. ET | 1:30 – 2:30 p.m. CT | 12:30 – 1:30 p.m. MT | 11:30 a.m. – 12:30 p.m. PT

REGISTER NOW FOR THIS FREE TRAINING

Microsoft Teams Webinar Registration:

[From Arrival to Aisles: Pharmacy Support for Newcomers](https://events.gcc.teams.microsoft.com/event/164c9de0-b3c3-4f33-a9c4-9bfaee8367e2@eb14b046-24c4-4519-8f26-b89c2159828c)

[\(https://events.gcc.teams.microsoft.com/event/164c9de0-b3c3-4f33-a9c4-9bfaee8367e2@eb14b046-24c4-4519-8f26-b89c2159828c\)](https://events.gcc.teams.microsoft.com/event/164c9de0-b3c3-4f33-a9c4-9bfaee8367e2@eb14b046-24c4-4519-8f26-b89c2159828c)

LEARNING OBJECTIVES

- Describe common barriers to medication adherence faced by newcomers.
- Discuss opportunities for anticipatory guidance and patient education to support appropriate medication use.
- Identify tools to assist newcomers in improving appropriate medication use and navigation of pharmacies.

PRESENTERS



Ann Philbrick, PharmD, FCCP, BCACP

MTM Pharmacist, Bethesda Family Medicine Clinic

Professor, University of Minnesota College of Pharmacy and University of Minnesota Medical School



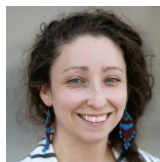
Katie Freeman, MD

Assistant Professor, University of Minnesota Medical School and Woodwinds Family Medicine

Residency Program

Family Medicine Doctor, Woodwinds Hospital and Bethesda Family Medicine Clinic

MODERATOR



Lily Rubenstein, RN, BSN, PHN

Refugee Health Nurse Consultant

Minnesota Department of Health

CME/CONTINUING EDUCATION

This activity has been planned and implemented in accordance with the accreditation requirements and policies of the Accreditation Council for Continuing Medical Education (ACCME) through the joint providership of the Minnesota Medical Association and Minnesota Department of Health. The Minnesota Medical Association (MMA) is accredited by the ACCME to provide continuing medical education for physicians.

The Minnesota Medical Association designates this live internet activity for a maximum of *1.0 AMA PRA Category 1 Credit(s)*[™]. Physicians should claim only the credit commensurate with the extent of their participation in the activity. Other participants will receive a proof of attendance document from MDH following completion of a post-webinar evaluation and are responsible for determining if this training meets CE criteria for their professional organization.

The Center of Excellence in Newcomer Health is supported by NU50CK000563 (MN) from the U.S. Centers for Disease Control and Prevention.

For more information or disclosures, please visit [Center of Excellence in Newcomer Health \(www.health.state.mn.us/communities/rih/coe/index.html\)](http://www.health.state.mn.us/communities/rih/coe/index.html). Contact the Minnesota Department of Health Refugee Health Program at MNCOENewcomerHealth@state.mn.us or 651-201-5414 for questions.