

# A HEALTHIER STATE OF MINNESOTA

BETTER HEALTH TOGETHER.



## SHIP IS CREATING HEALTH IN YOUR COMMUNITIES

Statewide Health Improvement Partnership (SHIP) investments support community-driven solutions to expand opportunities for active living, healthy eating and commercial tobacco-free living, helping all people in Minnesota prevent chronic diseases including cancer, heart disease, stroke and type 2 diabetes. Ninety percent of the nation's health care costs are for people with chronic conditions, and the majority of those costs are preventable.

### Senator

Eric R. Pratt

### Representative

Brad Tabke, 55A

### Representative

Tony Albright, 55B

## SHIP supports health across the lifespan

With a solid infrastructure and strong relationships in place, SHIP communities are well positioned to address emerging public health issues and continue creating better health across a lifespan.



For more information about SHIP, contact your local coordinator:

### Scott

Lindsay Aijala, LAijala@co.scott.mn.us

## Working together to support Scott County food shelves

The Food Shelf Networking Group provides a unique opportunity for food shelves in Scott County to collaborate and share best practices.

Scott County's Statewide Health Improvement Partnership (SHIP) facilitates the networking group and provides information about food access and food shelf management. The Food Shelf Networking Group has helped to break down silos between food shelves and move towards a collective approach to increasing access to healthy food.

Two food shelves, Belle Plaine Food Shelf and Peace Center, are partnering to improve their evaluation and tracking methods as a result of being a part of the Food Shelf Networking Group. While both Belle Plaine and Peace Center made strides to improve their food shelves to highlight and offer healthier options, gaps were still evident in their food tracking and evaluation systems.

With funding from SHIP, both food shelves implemented a food tracking software program called Pantry Saver. This software program has the ability to track produce tracking that integrates with a scale to track pounds. The tracking system allows the food shelf to better monitor and evaluate their changes made around healthy food options.

This year, through SHIP, both the Peace Center and Belle Plaine Food Shelf fully implemented Pantry Saver. The Peace Center has trained 29 volunteers to use and assist others with the software. The Belle Plaine Food Shelf has trained 40 volunteers. Historically they have only used paper documents and everything is now in one user-friendly database. The food shelf managers and volunteers are excited about the software and support from SHIP.

# SHIP: LOCAL LEADERSHIP, LOCAL PARTNERS, LOCAL EXPERTISE

These community partners are leading SHIP activities in your communities.

## Child Care

Readmobile

## Community

Backstretch Gardens  
 Belle Plaine Food Shelf  
 Boessling Lutheran Village  
 Apartments  
 CAP Agency  
 City of Prior Lake  
 Empire Gas & Grocery  
 Peace Center Food Shelf  
 Scott County Community  
 Development Agency  
 Top Star Market

## Health Care

River Valley Nursing Center  
 Scott County Mobile Clinic

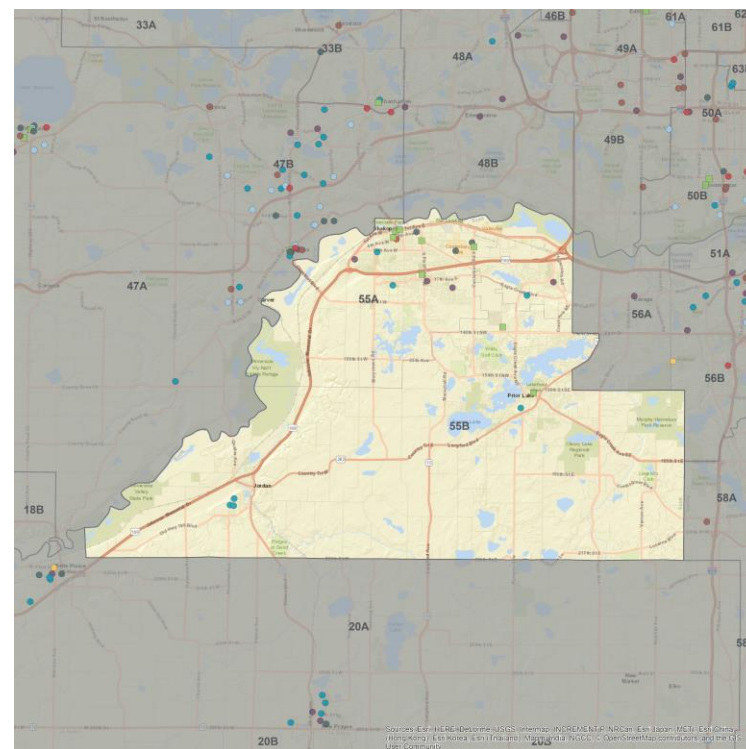
## Schools

Belle Plaine Junior/Senior High  
 Chatfield Elementary  
 Eagle Creek Elementary  
 Five Hawks Elementary  
 Jordan Elementary  
 Jordan High  
 Jordan Middle  
 Oakcrest Elementary  
 Raven Stream Elementary  
 Shakopee High  
 South West Metro Intermediate  
 District #288  
 Sweeney Elementary

## Workplace

All Saints Senior Living  
 Belle Plaine Public Schools  
 Chart Industries  
 City of Savage  
 City of Shakopee  
 Home Depot #2841  
 Jordan School District  
 New Prague Area Schools  
 River Valley YMCA  
 Scott County  
 Shakopee Public Schools  
 Southwest Metro Intermediate  
 District #288  
 St. Francis Reg. Med. Center

## MINNESOTA LEGISLATIVE DISTRICTS 55A & 55B



## SHIP strategies

- Active Living
- Schools
- Workplace Wellness
- Healthy Eating
- Child Care
- Multiple Strategies
- Tobacco-Free Living
- Health Care
- Tribal SHIP and Tobacco Grants

To learn more about SHIP, visit [www.health.mn.gov/ship](http://www.health.mn.gov/ship).