

# A HEALTHIER STATE OF MINNESOTA

BETTER HEALTH TOGETHER.



## SHIP IS CREATING HEALTH IN YOUR COMMUNITIES

Statewide Health Improvement Partnership (SHIP) investments support community-driven solutions to expand opportunities for active living, healthy eating and commercial tobacco-free living, helping all people in Minnesota prevent chronic diseases including cancer, heart disease, stroke and type 2 diabetes. Ninety percent of the nation's health care costs are for people with chronic conditions, and the majority of those costs are preventable.

**Senator**

Jim Carlson

**Representative**

Sandra Masin, 51A

**Representative**

Laurie Halverson, 51B

## SHIP supports health across the lifespan

With a solid infrastructure and strong relationships in place, SHIP communities are well positioned to address emerging public health issues and continue creating better health across a lifespan.



For more information about SHIP, contact your local coordinator:

**Dakota**

Marguerite Zauner, [Marguerite.Zauner@co.dakota.mn.us](mailto:Marguerite.Zauner@co.dakota.mn.us)

## Community network supports Latino child care providers in Dakota County

As early childhood is such a critical time for growth and development, providing quality child care to young children is an important public health concern.

Dakota County Public Health Department and the Statewide Health Improvement Partnership (SHIP) worked with community leaders to create a professional development network of Latino child care providers. This network is the outcome of a series of community listening sessions that sought to better understand current child care practices in the Latino community, their strengths and challenges. It is specifically for Family, Friend and Neighbor (FFN) care, providers not associated with formal, licensed care centers.

Quarterly educational and networking meetings have already begun. Partners include community leaders, the host site YMCA in West St. Paul and the University of Minnesota Extension. All materials and training lectures were provided in Spanish; 91 percent of participants said they felt confident in their ability to use content from the training with the children in their care.

SHIP provides technical assistance for the network by arranging space for the trainings, hiring Spanish-speaking trainers, translating materials, promoting and helping facilitate the events, linking resources and groups together, as well as supporting long-range planning. Free child care provided by the YMCA in West St. Paul allows more attendees to participate at Saturday trainings.

This network aims to build a sustainable group of members who can share resources and support each other in skill building, serving a vital role in promoting the health of the county's youngest members.

# SHIP: LOCAL LEADERSHIP, LOCAL PARTNERS, LOCAL EXPERTISE

These community partners are leading SHIP activities in your communities.

## Child Care

Eagan Montessori Academy North  
Eagan Montessori Academy South  
Head Start - Eagan

## Community

Cedervale Highlands  
Crane Creek Townhome Association  
CV2  
Dakota County CDA - Erin Place  
Dakota County CDA - Lakeshore  
Dakota County CDA - Lakeside Pointe  
Dakota County CDA - Lincoln Place  
Dakota County CDA - Northwood  
Dakota County CDA - Oak Ridge  
Dakota County CDA - Oakwoods  
of Eagan  
Dakota County CDA - OLeary  
Manor  
Dakota County CDA - Parkside  
Dakota County CDA - Riverview  
Ridge  
Royal Oaks Apartments  
Town Centre Apartments  
Willow Pond

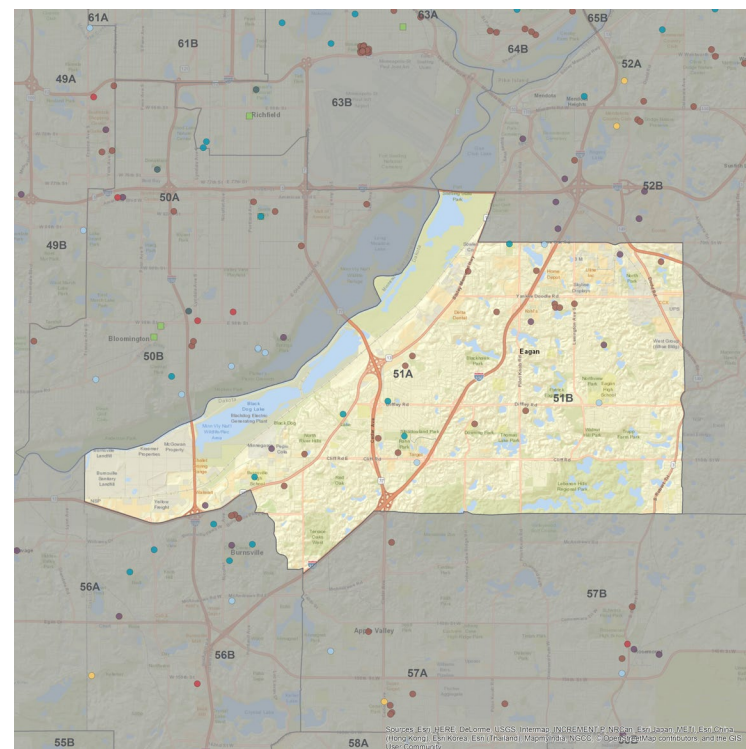
## Schools

Burnsville Alternative High  
Burnsville High  
Pilot Knob STEM Magnet School  
Rahn Elementary  
Sioux Trail Elementary

## Workplace

Apothecary Products  
Better Business Bureau  
John Henry Foster  
Woodland Elementary  
Yankee Eye Clinic

## MINNESOTA LEGISLATIVE DISTRICTS 51A & 51B



## SHIP strategies

- Active Living
- Healthy Eating
- Tobacco-Free Living
- Schools
- Child Care
- Health Care
- Workplace Wellness
- Multiple Strategies
- Tribal SHIP and Tobacco Grants

To learn more about SHIP, visit [www.health.mn.gov/ship](http://www.health.mn.gov/ship).