

A HEALTHIER STATE OF MINNESOTA

BETTER HEALTH TOGETHER.



SHIP IS CREATING HEALTH IN YOUR COMMUNITIES

Statewide Health Improvement Partnership (SHIP) investments support community-driven solutions to expand opportunities for active living, healthy eating and commercial tobacco-free living, helping all people in Minnesota prevent chronic diseases including cancer, heart disease, stroke and type 2 diabetes. Ninety percent of the nation's health care costs are for people with chronic conditions, and the majority of those costs are preventable.

Senator
Carrie Ruud

Representative
Josh Heintzeman, 10A

Representative
Dale Lueck, 10B

SHIP supports health across the lifespan

With a solid infrastructure and strong relationships in place, SHIP communities are well positioned to address emerging public health issues and continue creating better health across a lifespan.



For more information about SHIP, contact your local coordinator:

Crow Wing
Kalsey Stults, Kalsey.Stults@EssentiaHealth.org

Crow Wing energized by choice model

In 2014, 30 percent of people in Crow Wing County worried about food running out, according to the Crow Wing County Community Health Survey.

In response, Crow Wing Energized, a public-private partnership between the Crow Wing Statewide Health Improvement Partnership (SHIP) and Essentia Health, decided to focus on helping local food shelves transform by using the "Choice model."

According to U of M Extension's Carolyn McQueen, "Choice model gives clients at the food shelves a sense of dignity and respect for their choices as they shop for their food, and also provides healthier options along the way."

Crow Wing Energized, through the guidance of SHIP staff, SNAP-Ed educators and the regional food bank, has supported county food shelves in adopting this model. Today, all but two food shelves have made the switch to a client-choice model, and 100 percent participate in monthly Food Shelf Coalition meetings.

A recent Crow Wing Energized Community Health Survey found the percentage of people concerned about food decreased to 17 percent.

SHIP has funded displays, shelving and refrigeration. At Food Shelf Coalition meetings, volunteers learn techniques to attract clients to the supply of healthy foods, nudging them toward healthier food choices.

"I credit SHIP, Second Harvest and the Crow Wing Energized food shelf coalition for the support in moving forward," said Linda Loftis, Brainerd Salvation Army President. "We asked participants for feedback on a number of issues concerning the new Choice shopping. The response was very positive, having the option to pick from the foods available not only gave them choice of foods they would use, but gives them the dignity they deserve."

SHIP: LOCAL LEADERSHIP, LOCAL PARTNERS, LOCAL EXPERTISE

These community partners are leading SHIP activities in your communities.

Community

Brainerd Public Library
 Central Lakes College
 Central MN Adult and Teen Challenge
 City of Aitkin
 City of Baxter
 City of Brainerd
 City of Pequot Lakes
 Clarisse's Day Care
 Cub Foods
 Cummings Treasured Adult Day Care Center
 Cuyuna Range Farmers Market
 Cuyuna Range Youth Center
 Emily Food Shelf
 Ideal Green Market Co-Op
 Lakes Area Food Shelf
 Nisswa Chamber of Commerce
 Northland Arboretum
 Pointway Church
 Riverwood Healthcare Center
 The Burlington House
 TheShop
 United Way of Crow Wing County and Southern Cass County

Health Care

Brainerd Park United Methodist Church
 Carefree Living
 Clow Stamping
 Consolidated
 Telecommunications Company – Brainerd
 Crosslake Lutheran Church
 Crow Wing County

Crow Wing Power

Cuyuna Regional Medical Center
 Edgewood Vista
 Essentia Health - St. Joseph's Medical Center
 Hallett Center
 Home Instead Senior Care
 Journey North Community Church
 Lord of Life Lutheran Church
 Mid Minnesota Women's Center
 Mills Company
 Salvation Army- Brainerd
 St. Christopher's Church
 Takedown Gym
 The Center
 Trailside Center
 Trinity Lutheran Church – Crow Wing
 YMCA- Brainerd

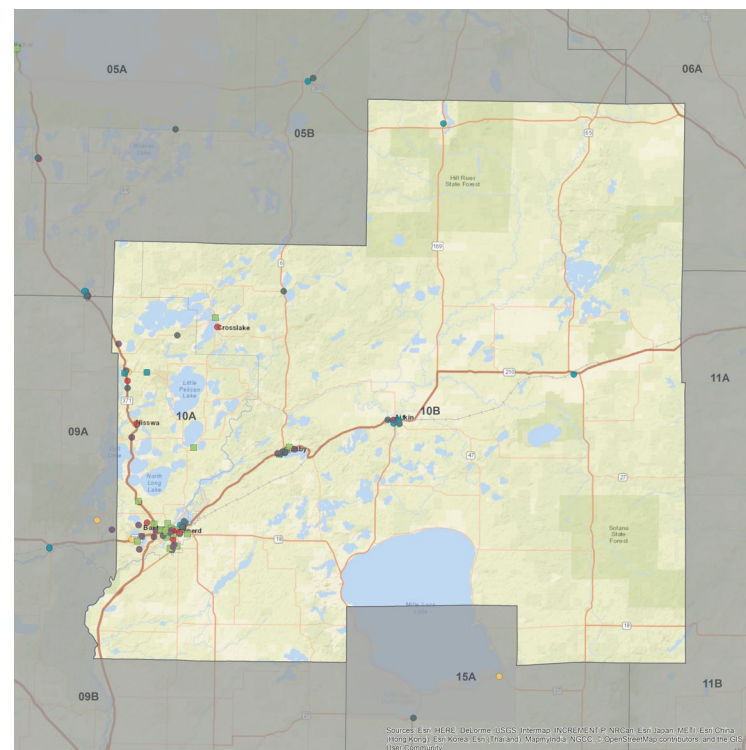
Schools

Brainerd Senior High
 Crosslake Community Charter
 Cuyuna Range Elementary
 Eagle View Elementary
 Forestview Middle
 Garfield Elementary
 Harrison Elementary
 ISD 182 Crosby School District
 Lincoln Education Center
 Lowell Elementary
 Nisswa Elementary
 Pequot Lakes Middle
 Pequot Lakes School Dist. ISD 186
 Pequot Lakes Senior High
 Riverside Elementary

Workplace

Backyard Greenhouse
 Cuyuna Lakes Chamber
 Brainerd Daily Dispatch
 Brainerd HRA ROSS
 Brainerd Lakes Chamber of Commerce
 City of Crosby
 Dangerzone Gym
 Essentia Health Brainerd Clinic
 Goldleaf Partners
 Good Samaritan Society - Bethany
 Good Samaritan Society - Home Care and Hospice
 Good Samaritan Society - Woodland
 Good Samaritan Society Hospice
 Graphic Packaging
 Hopkins Health and Wellness
 ISD 181 Community Education
 Lord of Life Church
 Lutheran Social Services
 MnDOT
 Pequot Tool

MINNESOTA LEGISLATIVE DISTRICTS 10A & 10B



SHIP strategies

- Active Living
- Healthy Eating
- Tobacco-Free Living
- Schools
- Child Care
- Health Care
- Workplace Wellness
- Multiple Strategies
- Tribal SHIP and Tobacco Grants

To learn more about SHIP, visit www.health.mn.gov/ship.