

Suicide in Minnesota, 1999-2015

DATA BRIEF

Suicides continue to be a serious public health concern in Minnesota. This Data Brief analyzes suicide data from death certificates from 1999-2015, highlighting the fact that suicide is not experienced equally across age groups, genders or geography in Minnesota.

Over the last decade adult suicide rates have increased. From 2014-2015 the rate of suicide increased for males 20-44 years of age, decreased among youth and seniors, and stayed steady for females.

Minnesota Suicide Prevention Program: Suicide is Preventable

Minnesota's suicide prevention efforts are based on the evidence that most suicides are preventable, mental illness is treatable and recovery is possible. In 2015 the Minnesota Department of Health (MDH) and the Minnesota State Suicide Prevention Taskforce released the *Minnesota Suicide Prevention Plan: Goals and Objectives for Action 2015-2020*. The ultimate goal of the Plan is to reduce suicide in Minnesota by 10% in 2020 and by 20% in 2025, ultimately working toward zero deaths. The plan calls for a comprehensive, public health approach of promoting health, wellness and connectedness in communities. Key partners include school personnel, coaches, faith communities, law enforcement, tribal nations and mental health care practitioners.

In 2015, the Minnesota Legislature invested \$47 million in new spending for mental health services. Investments include an additional \$3 million to the Minnesota Department of Human Services for mobile mental health crisis grants, and \$16.6 million for mental health teams to offer psychiatric services to people at home and other locations outside of traditional clinic settings. The teams respond to a crisis, work to assess the people involved, resolve the crisis and link people to needed services.

Starting July 2015, the Minnesota Legislature increased suicide prevention funds to \$348,000 annually. These funds support MDH suicide prevention coordination and community-based grants to increase communities' capacity to prevent suicides. The MDH also has federal funding to implement a public health data tool, the Minnesota Violent Death Reporting System, to better describe the circumstances leading up to deaths and identify areas for prevention or system changes to help decrease suicides in Minnesota.

Minnesota Suicides: Number and Rate Increasing

In 2015 there were 726 suicide deaths reported in Minnesota, up from 686, for an increase of 6 percent, from 2014. The 2015 rate was 13.1 per year per 100,000 Minnesotans, up from 12.2 in 2014. Previously, the highest rate was 13 per 100,000 in 1986 (541 deaths).

Chart 1. Minnesota Suicide Deaths, 1999-2015

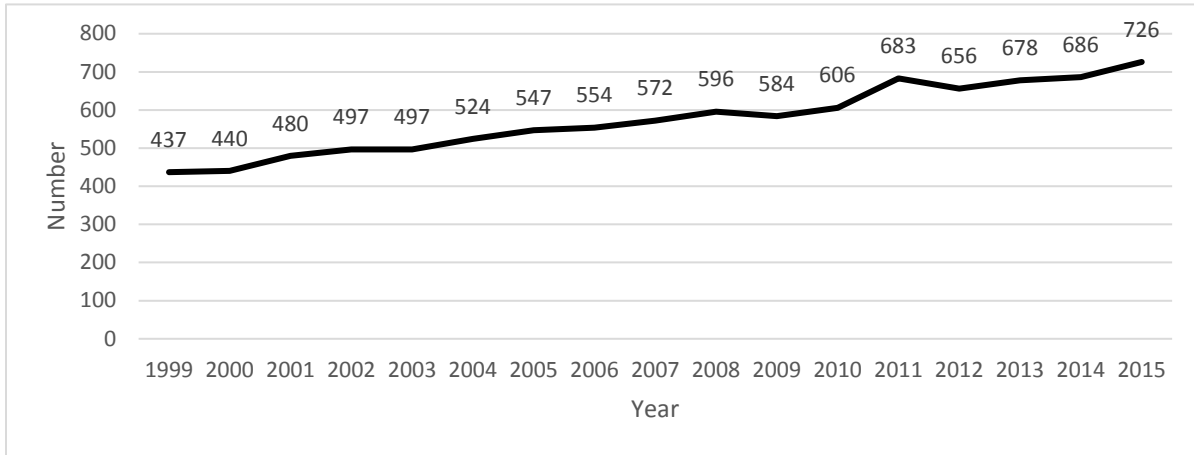
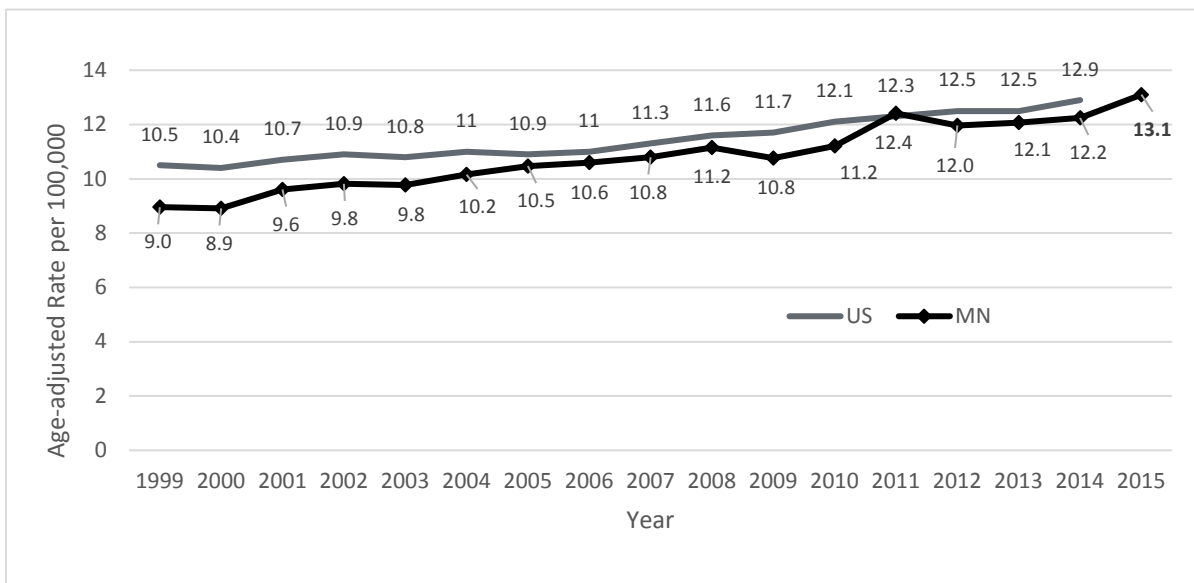


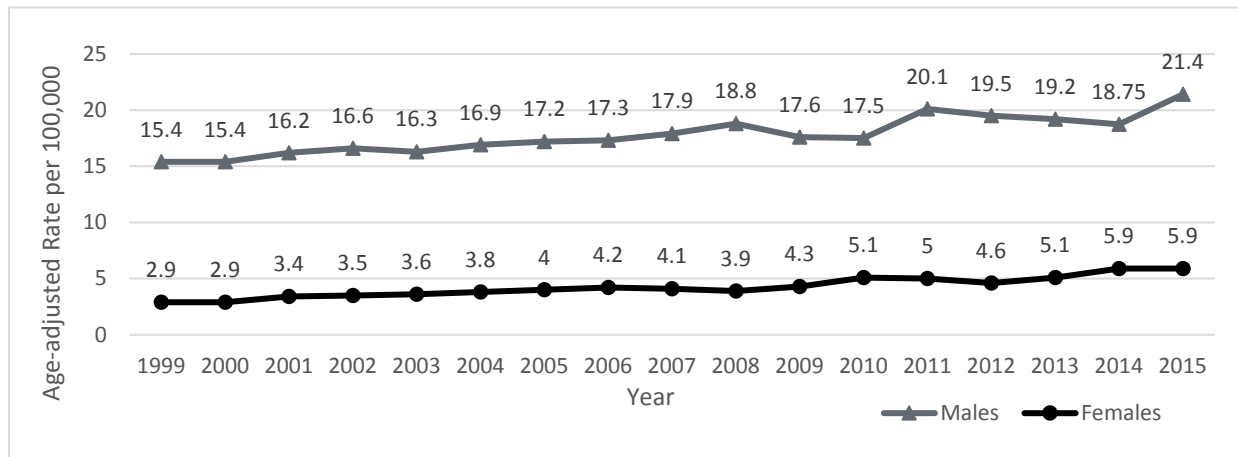
Chart 2. Minnesota and U.S. Suicide Rates, 1999-2015



Male Suicide Rate: Higher Rate than Females

The suicide rate has increased for both males and females since 1999, with the male rate three to five times higher than the female rate. In 2015, the Minnesota male suicide rate increased from 18.75 per 100,000 in 2014 to 21.4 per 100,000, **while the female suicide rate remained stable at 5.9 per 100,000.**

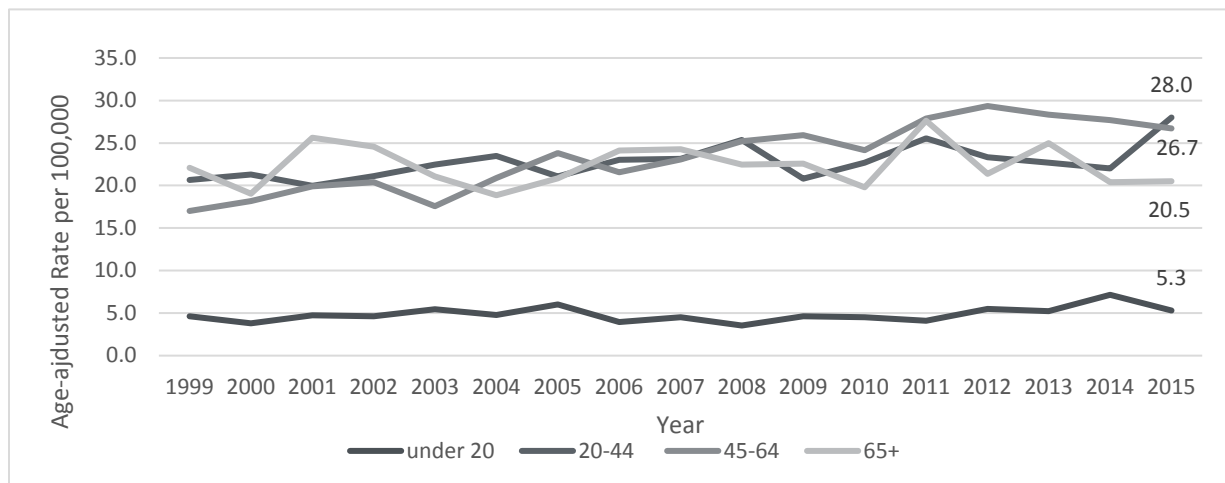
Chart 3. Minnesota Suicide Rate by Gender, 1999-2015



Males 20-44 Years Old: Highest Suicide Rate in 2015

In 2015, the suicide rate for males 20-44 years old increased from 22.0 per 100,000 to 28.0 per 100,000, surpassing the rate among males 45-64 years old (26.7 per 100,000). **The suicide rate decreased in 2015 for males under 20 years of age, 45-64 years of age and remained stable for males 65 and older.**

Chart 4. Minnesota Male Suicide Rates by Age Group, 1999-2015



MINNESOTA SUICIDES 1999-2015

Table 1. Suicide Data by County: 2010-2015

Region	2015	2014	2013	2012	2011	2010	2010-2014 Total	2010-2014 Age-Adjusted Rate
AITKIN	1	1	4	3	2	1	11	.
ANOKA	55	43	53	52	41	49	238	13.7
BECKER	6	5	5	5	5	3	23	15.2
BELTRAMI	8	11	14	8	6	5	44	18.5
BENTON	5	5	7	4	7	3	26	13.5
BIG STONE	0	1	1	0	0	0	2	.
BLUE EARTH	12	7	8	11	5	7	38	12.6
BROWN	1	6	4	2	2	2	16	.
CARLTON	3	7	6	5	7	9	34	18.2
CARVER	13	10	10	14	10	7	51	11.3
CASS	4	7	7	3	2	0	19	.
CHIPPEWA	2	2	2	2	1	0	7	.
CHISAGO	9	7	4	9	8	4	32	12.1
CLAY	6	6	6	9	10	5	36	12.5
CLEARWATER	0	1	2	2	0	1	6	.
COOK	0	1	0	0	0	1	2	.
COTTONWOOD	1	3	1	1	4	2	11	.
CROW WING	18	6	11	7	11	6	41	12.9
DAKOTA	54	52	42	45	63	41	243	11.9
DODGE	3	2	1	8	5	3	19	.
DOUGLAS	5	2	4	6	6	2	20	10
FARIBAULT	3	3	1	0	3	2	9	.
FILLMORE	0	3	1	2	3	1	10	.
FREEBORN	4	3	3	2	4	4	16	.
GOODHUE	8	7	6	6	8	5	32	12.8
GRANT	1	0	1	2	0	1	4	.
HENNEPIN	143	125	134	132	114	122	627	10.2
HOUSTON	2	1	5	3	2	2	13	.
HUBBARD	3	6	2	3	4	3	18	.
ISANTI	10	3	6	3	2	2	16	.
ITASCA	14	15	8	2	7	10	42	17.4
JACKSON	1	1	1	2	2	3	9	.
KANABEC	5	0	1	3	3	4	11	.
KANDIYOHI	12	3	4	6	11	0	24	11.1
KITTSOON	1	1	1	0	0	1	3	.
KOOCHICHING	0	4	2	1	4	2	13	.
LAC QUI PARLE	2	1	0	3	0	0	4	.
LAKE	4	1	5	0	1	1	8	.

MINNESOTA SUICIDES 1999-2015

Region	2015	2014	2013	2012	2011	2010	2010-2014 Total	2010-2014 Age-Adjusted Rate
LAKE OF THE WOODS	1	3	0	1	0	0	4	.
LE SUEUR	2	4	5	5	4	1	19	.
LINCOLN	1	1	1	1	1	0	4	.
LYON	4	2	2	1	5	0	10	.
MC LEOD	3	6	2	6	4	6	24	11.8
MAHNOMEN	0	1	0	1	1	0	3	.
MARSHALL	1	0	0	1	0	1	2	.
MARTIN	2	5	4	3	5	3	20	19.9
MEEKER	3	6	2	0	2	4	14	.
MILLE LACS	5	7	3	5	2	4	21	15.4
MORRISON	2	2	4	8	3	8	25	14.5
MOWER	4	4	4	6	8	4	26	14.8
MURRAY	0	0	3	4	2	2	11	.
NICOLLET	5	3	2	7	3	4	19	.
NOBLES	0	2	0	2	2	2	8	.
NORMAN	1	1	0	0	4	0	5	.
OLMSTED	15	16	13	10	16	17	72	9.5
OTTER TAIL	13	7	19	6	6	8	46	16.5
PENNINGTON	2	0	2	4	2	1	9	.
PINE	4	5	6	4	3	7	25	17.6
PIPESTONE	1	0	2	1	0	2	5	.
POLK	3	5	10	4	5	4	28	18.7
POPE	1	1	2	0	1	2	6	.
RAMSEY	69	71	49	52	58	53	283	10.8
RED LAKE	1	0	0	2	0	1	3	.
REDWOOD	3	2	7	3	2	1	15	.
RENVILLE	1	3	2	4	5	3	17	.
RICE	5	5	6	6	10	5	32	10.6
ROCK	2	3	1	1	1	1	7	.
ROSEAU	4	1	4	0	3	2	10	.
ST LOUIS	42	33	33	39	33	22	160	15.2
SCOTT	17	14	14	15	11	11	65	9.5
SHERBURNE	5	18	16	17	11	16	78	17.8
SIBLEY	1	1	0	2	2	4	9	.
STEARNS	15	22	18	15	23	23	101	14.1
STEELE	5	3	7	5	5	5	25	14.3
STEVENS	0	0	0	0	2	1	3	.
SWIFT	0	0	2	0	0	1	3	.
TODD	5	5	2	4	6	4	21	17.3

MINNESOTA SUICIDES 1999-2015

Region	2015	2014	2013	2012	2011	2010	2010-2014 Total	2010-2014 Age-Adjusted Rate
TRAVERSE	1	0	0	0	2	0	2	.
WABASHA	1	2	5	1	4	2	14	.
WADENA	2	1	4	2	2	2	11	.
WASECA	1	2	2	1	3	3	11	.
WASHINGTON	21	25	28	25	29	22	129	10.3
WATONWAN	5	2	1	1	1	1	6	.
WINONA	8	10	4	4	4	7	29	11.4
WRIGHT	18	15	15	12	22	15	79	12.4
YELLOW MEDICINE	2	2	4	2	2	0	10	.
7-COUNTY METRO	372	340	330	335	326	305	1636	10.9
GREATER MINNESOTA	354	343	353	324	357	294	1671	13.5
TOTAL MINNESOTA	726	683	683	659	683	599	3307	12

* Rate not calculated for less than 20 deaths.

Data Sources

1999-2014: Centers for Disease Control and Prevention, National Center for Health Statistics. Underlying Cause of Death on CDC WONDER Online Database, released 2015.

2015: Minnesota Department of Health, Injury & Violence Prevention Unit. Unpublished data, compiled from Minnesota Certificate of Death Data. 2016. September 23, 2016.

Age-adjusted rates: Age-adjusted rates were formulated using a weight based on age groupings of the U.S. population as reported by the U.S Census Bureau.

Suggested Citation

Heinen M, Wright N, Lopez A, Roesler J. Suicide in Minnesota, 1999-2015 - Data Brief. Saint Paul, MN: Minnesota Department of Health, September 2016.

[Minnesota Department of Health](#)

Injury and Violence Unit

PO Box 64822,

St. Paul, MN 55164-0882

(phone) 652-201-5640

Melissa.Heinen@state.mn.us

Nate.Wright@state.mn.us

Amy.Lopez@state.mn.us

Jon.Roesler@state.mn.us

Upon request, this material will be made available in an alternative format such as large print, Braille or audio recording. Printed on recycled paper.

09/23/2016