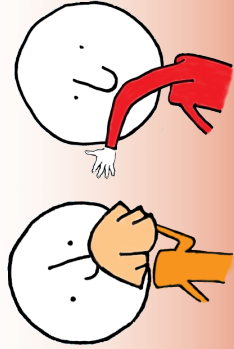
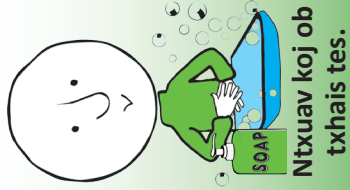


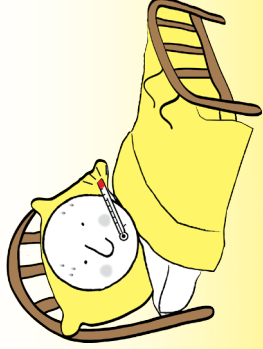
Tiv thairv Khaub Thuas



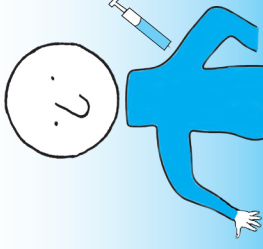
Npog koj thaum
koj hnoos.



Ntxuav koj ob
txhais tes.

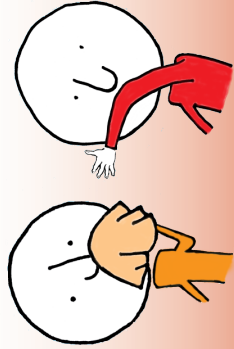


Nyob twj ywrm tom tsev
thaum muaj mob.

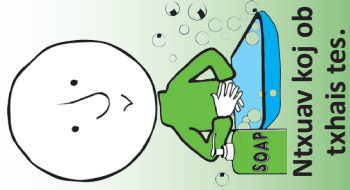


Mus xav tshuaj
tiv thairv.

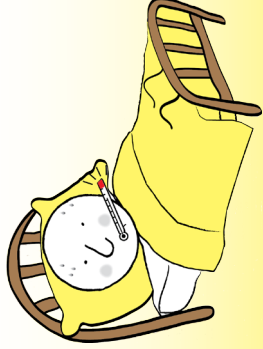
Tiv thairv Khaub Thuas



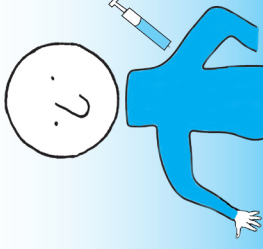
Npog koj thaum
koj hnoos.



Ntxuav koj ob
txhais tes.

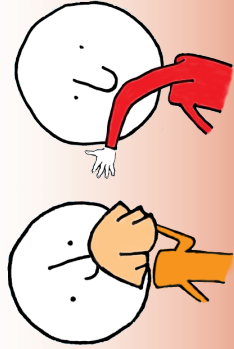


Nyob twj ywrm tom tsev
thaum muaj mob.

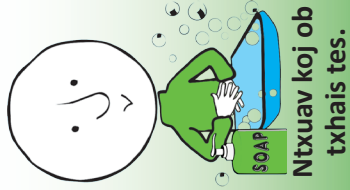


Mus xav tshuaj
tiv thairv.

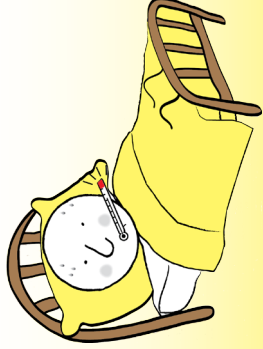
Tiv thairv Khaub Thuas



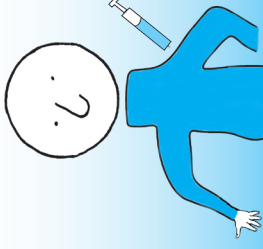
Npog koj thaum
koj hnoos.



Ntxuav koj ob
txhais tes.

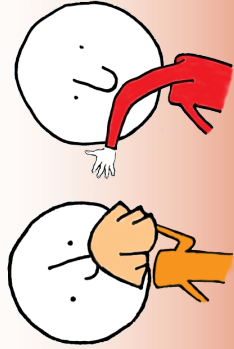


Nyob twj ywrm tom tsev
thaum muaj mob.

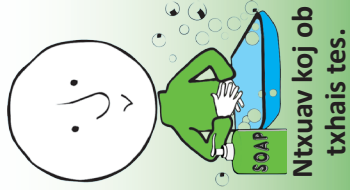


Mus xav tshuaj
tiv thairv.

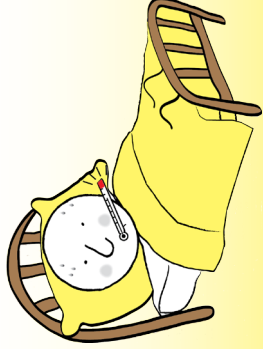
Tiv thairv Khaub Thuas



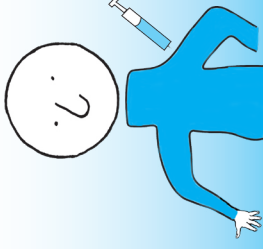
Npog koj thaum
koj hnoos.



Ntxuav koj ob
txhais tes.



Nyob twj ywrm tom tsev
thaum muaj mob.



Mus xav tshuaj
tiv thairv.

FIGHT the FLU

Tiv thaiv Khaub Thuas

Questions about flu?

Minnesota Department
of Health

www.mdhflu.com

Centers for Disease Control

www.cdc.gov

1-800-CDC-INFO
(800-232-4636)

TTY: 1-888-232-6348

24 hours/every day

Your city or county public
health department

FIGHT the FLU

Tiv thaiv Khaub Thuas

Questions about flu?

Minnesota Department
of Health

www.mdhflu.com

Centers for Disease Control

www.cdc.gov

1-800-CDC-INFO
(800-232-4636)

TTY: 1-888-232-6348

24 hours/every day

Your city or county public
health department

FIGHT the FLU

Tiv thaiv Khaub Thuas

Questions about flu?

Minnesota Department
of Health

www.mdhflu.com

Centers for Disease Control

www.cdc.gov

1-800-CDC-INFO
(800-232-4636)

TTY: 1-888-232-6348

24 hours/every day

Your city or county public
health department

FIGHT the FLU

Tiv thaiv Khaub Thuas

Questions about flu?

Minnesota Department
of Health

www.mdhflu.com

Centers for Disease Control

www.cdc.gov

1-800-CDC-INFO
(800-232-4636)

TTY: 1-888-232-6348

24 hours/every day

Your city or county public
health department