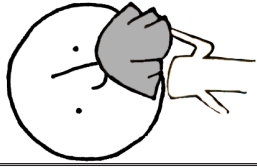
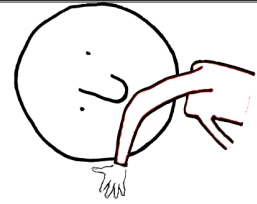


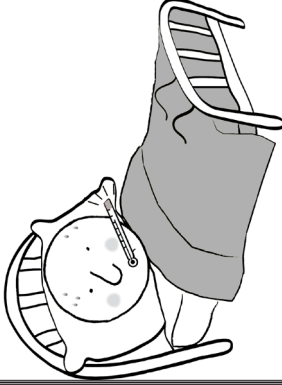
**Fight the Flu**



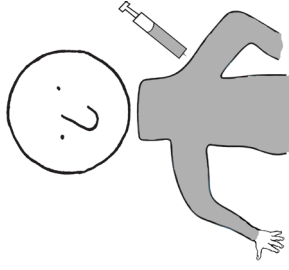
**Cover your cough!**



**Wash your hands.**

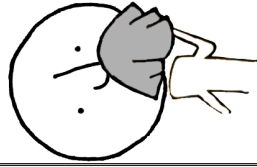


**Stay home when sick.**

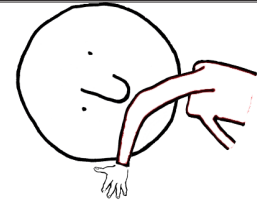


**Get vaccinated.**

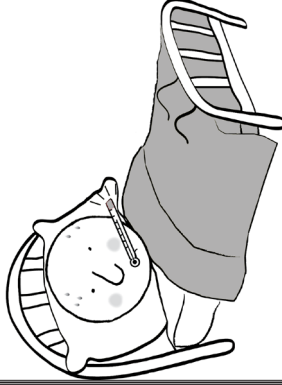
**Fight the Flu**



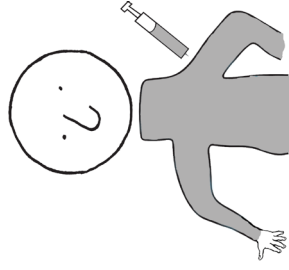
**Cover your cough!**



**Wash your hands.**

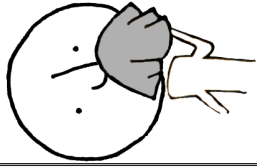


**Stay home when sick.**

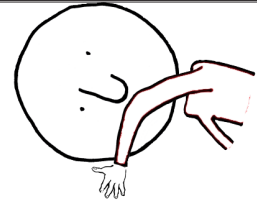


**Get vaccinated.**

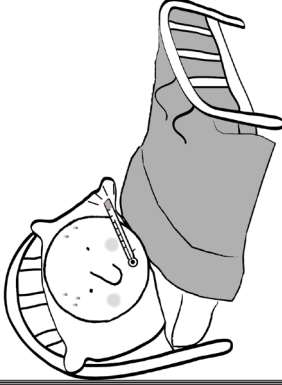
**Fight the Flu**



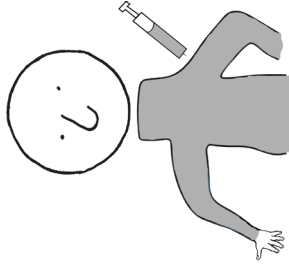
**Cover your cough!**



**Wash your hands.**

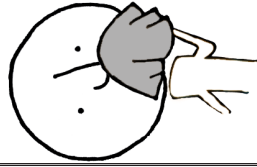


**Stay home when sick.**

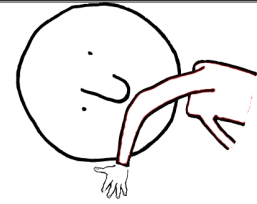


**Get vaccinated.**

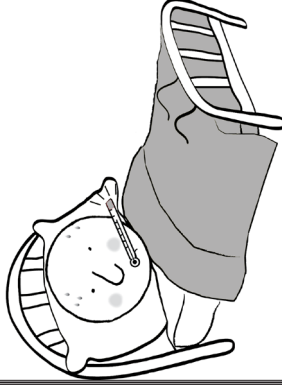
**Fight the Flu**



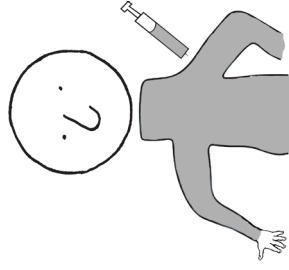
**Cover your cough!**



**Wash your hands.**



**Stay home when sick.**



**Get vaccinated.**

# FIGHT the FLU

## Questions about flu?

Minnesota Department  
of Health

[www.mdhflu.com](http://www.mdhflu.com)

## Centers for Disease Control

[www.cdc.gov](http://www.cdc.gov)

1-800-CDC-INFO  
(800-232-4636)

TTY: 1-888-232-6348

24 hours/every day

Your city or county public  
health department

# FIGHT the FLU

## Questions about flu?

Minnesota Department  
of Health

[www.mdhflu.com](http://www.mdhflu.com)

## Centers for Disease Control

[www.cdc.gov](http://www.cdc.gov)

1-800-CDC-INFO  
(800-232-4636)

TTY: 1-888-232-6348

24 hours/every day

Your city or county public  
health department

# FIGHT the FLU

## Questions about flu?

Minnesota Department  
of Health

[www.mdhflu.com](http://www.mdhflu.com)

## Centers for Disease Control

[www.cdc.gov](http://www.cdc.gov)

1-800-CDC-INFO  
(800-232-4636)

TTY: 1-888-232-6348

24 hours/every day

Your city or county public  
health department

# FIGHT the FLU

## Questions about flu?

Minnesota Department  
of Health

[www.mdhflu.com](http://www.mdhflu.com)

## Centers for Disease Control

[www.cdc.gov](http://www.cdc.gov)

1-800-CDC-INFO  
(800-232-4636)

TTY: 1-888-232-6348

24 hours/every day

Your city or county public  
health department