

# Weekly Influenza & Respiratory Illness Activity Report

A summary of influenza surveillance indicators prepared by the Division of Infectious Disease Epidemiology Prevention & Control

**Week Ending April 11, 2020 | WEEK 15**

All data are preliminary and may change as more information is received

## Minnesota Influenza Geographic Spread

No Activity

Sporadic

Local

Regional

Widespread

During the week ending April 11, 2020 (Week 15), surveillance indicators showed sporadic geographic spread of influenza *(based on CDC's Activity Estimates Definitions)*.

Since the start of the influenza season, 3 pediatric influenza-related deaths have been reported.

[Minnesota Influenza Surveillance \(www.health.state.mn.us/diseases/flu/stats/\)](http://www.health.state.mn.us/diseases/flu/stats/)

[Weekly U.S. Influenza Surveillance Report \(www.cdc.gov/flu/weekly/\)](http://www.cdc.gov/flu/weekly/)

[World Health Organization \(WHO\) Surveillance \(www.who.int/influenza/surveillance\\_monitoring/updates/en/\)](http://www.who.int/influenza/surveillance_monitoring/updates/en/)

Neighboring states' influenza information:

Iowa: [Iowa Flu Reports \(idph.iowa.gov/influenza/reports\)](http://idph.iowa.gov/influenza/reports)

Wisconsin: [Influenza \(Flu\) \(www.dhs.wisconsin.gov/communicable/influenza/\)](http://www.dhs.wisconsin.gov/communicable/influenza/)

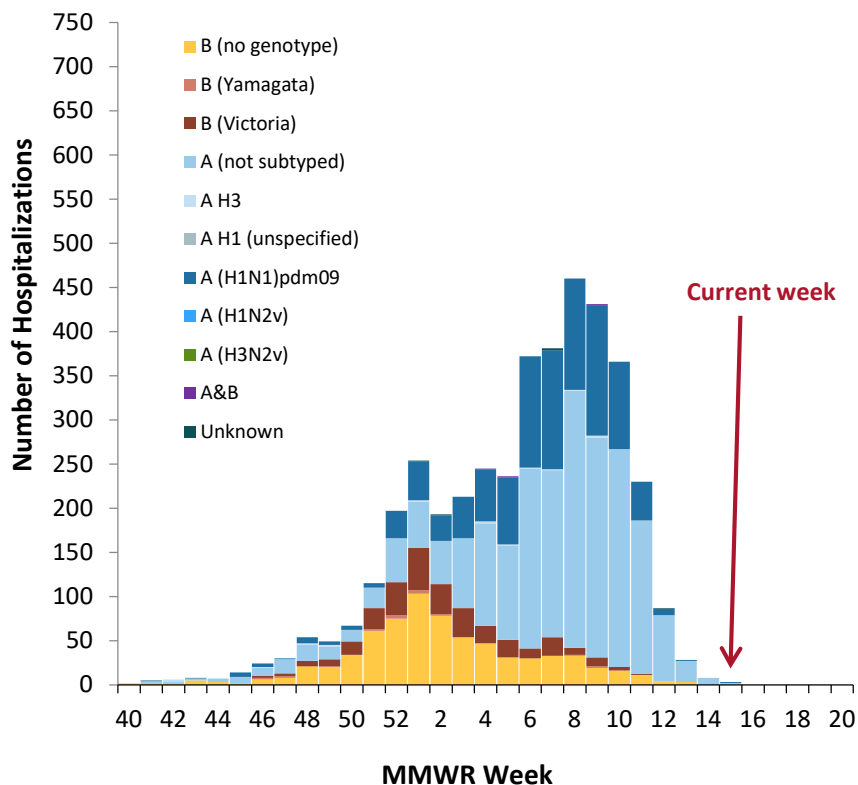
North Dakota: [Reported Seasonal Influenza Activity in North Dakota \(www.ndflu.com/default.aspx\)](http://www.ndflu.com/default.aspx)

South Dakota: [South Dakota Influenza Information \(doh.sd.gov/diseases/infectious/flu/\)](http://doh.sd.gov/diseases/infectious/flu/)

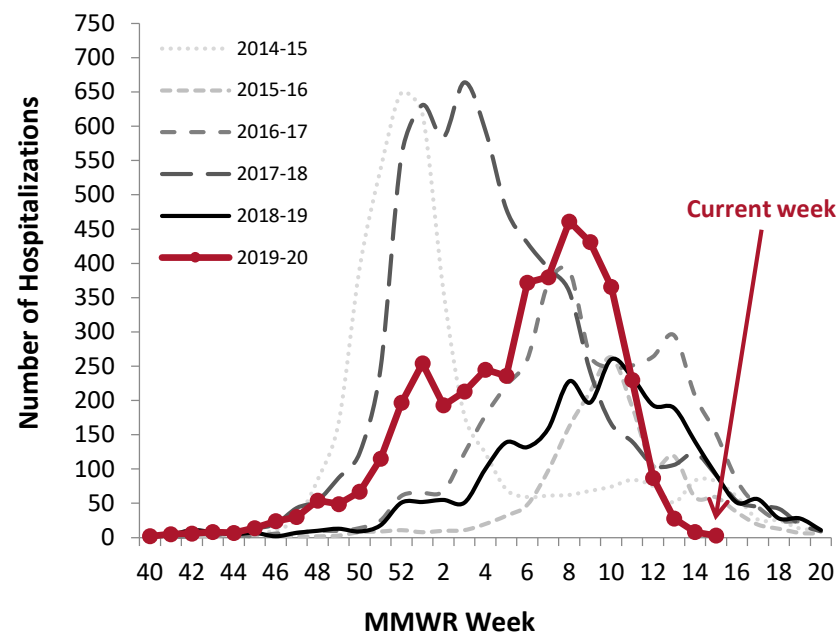
# Hospitalized Influenza Surveillance

Hospitalized influenza cases are based on disease reports of laboratory-positive influenza (via DFA, IFA, viral culture, EIA, rapid test, paired serological tests or RT-PCR) and specimens from hospitalized patients with acute respiratory illness submitted to MDH-PHL by hospitals and laboratories. **Due to the need to confirm reports and reporting delays, consider current week data preliminary.**

## Hospitalized Influenza Cases by Type Minnesota (FluSurv-NET\*)



## Hospitalized Influenza Cases by Season, Minnesota (FluSurv-NET\*)



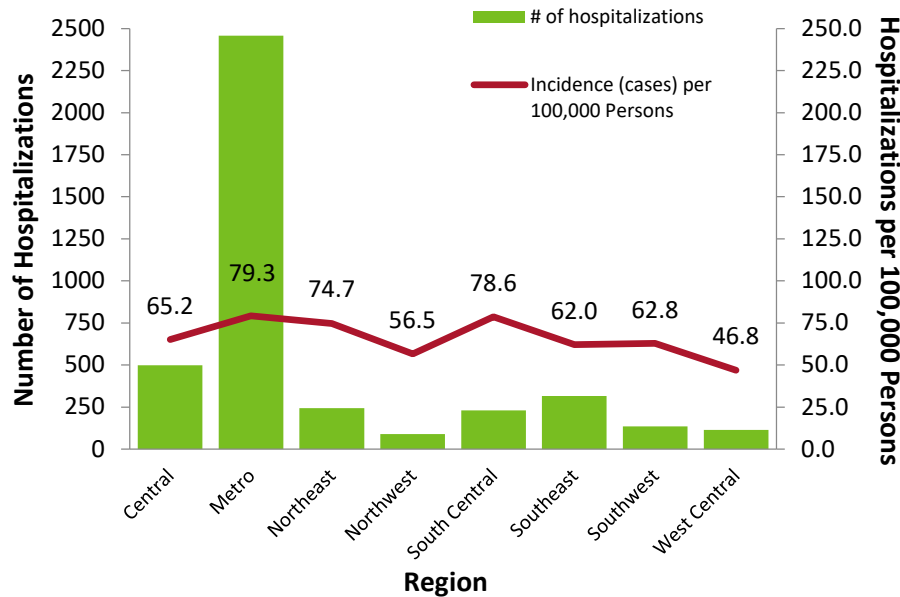
Hospitalizations this week	Hospitalizations last week	Total hospitalizations (to date)
3	8	4,085

Season	Total hospitalizations (historic)
2014-2015	4,081
2015-2016	1,538
2016-2017	3,695
2017-2018	6,446
2018-2019	2,543
<b>2019-2020</b>	<b>4,085 (to date)</b>

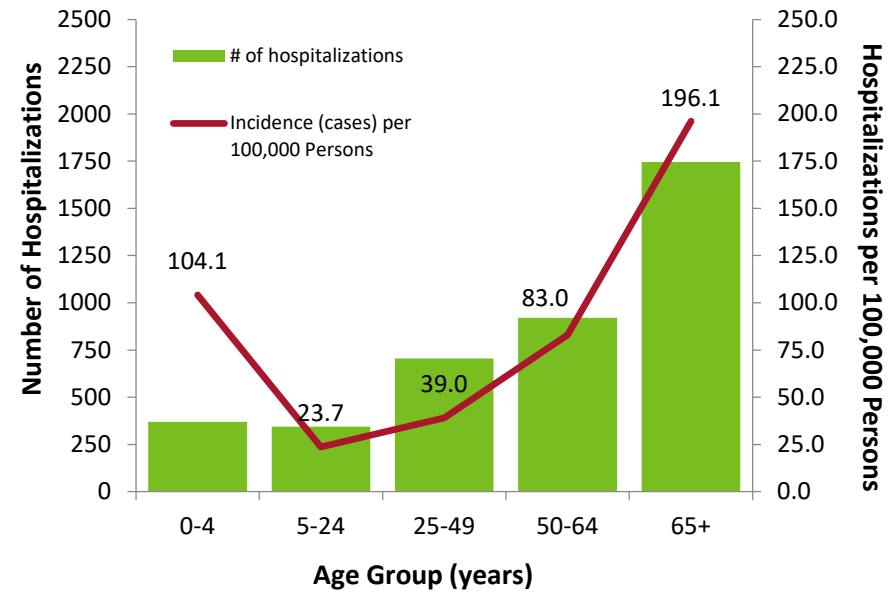
\*Influenza Surveillance Network

# Hospitalized Influenza Surveillance (continued)

## Number of Influenza Hospitalizations and Incidence by Region, Minnesota September 29, 2019 – April 11, 2020



## Number of Influenza Hospitalizations and Incidence by Age, Minnesota September 29, 2019 – April 11, 2020



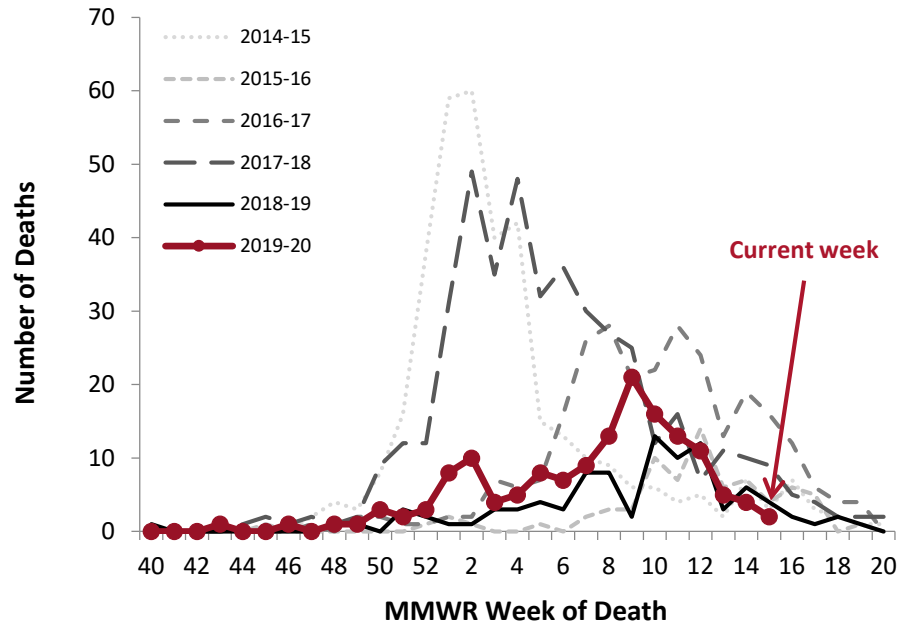
Region	Hospitalizations this week	Total (to date)
Central	1 (33%)	499 (12%)
Metro	2 (67%)	2,457 (60%)
Northeast	0 (0%)	243 (6%)
Northwest	0 (0%)	90 (2%)
South Central	0 (0%)	230 (6%)
Southeast	0 (0%)	316 (8%)
Southwest	0 (0%)	136 (3%)
West Central	0 (0%)	114 (3%)

Median age (years) at time of admission
60.0

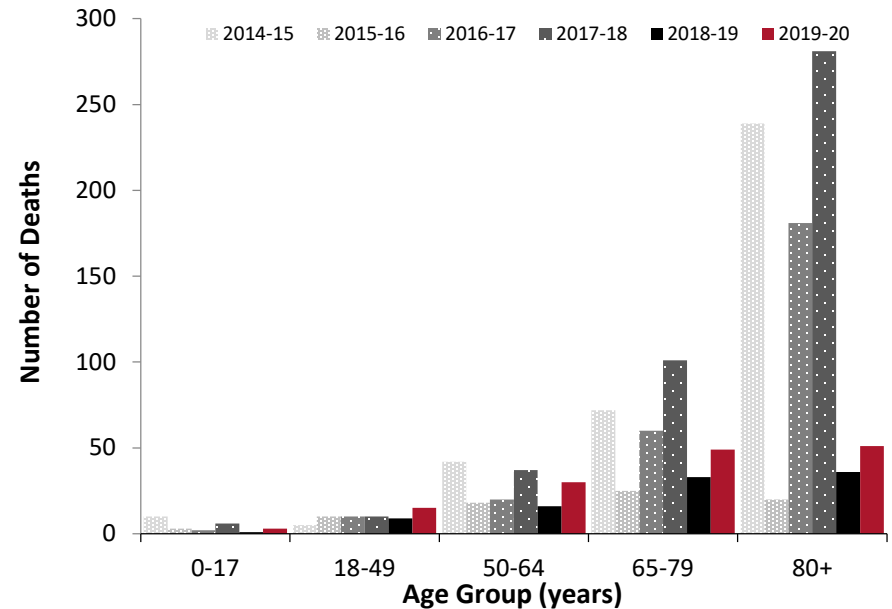
# Influenza-Associated Death Surveillance

Influenza deaths are collected via reports from Minnesota's death certificate database, hospitals, and long-term care facilities. Decedents with influenza listed as a cause of or contributor to death, have recent laboratory confirmation of influenza, or are part of an ongoing influenza outbreak at a long-term care facility are reported to influenza surveillance. **Due to the need to confirm reports and reporting delays, consider current week data preliminary.**

## Deaths Associated with Influenza by Season, Minnesota



## Deaths Associated with Influenza by Age Group and Season, Minnesota



Season	Total deaths (historic)	Total pediatric (<18 years) deaths (historic)
2014-2015	368	10
2015-2016	76	3
2016-2017	273	2
2017-2018	440	6
2018-2019	95	1
<b>2019-2020</b>	<b>148 (to date)</b>	<b>3 (to date)</b>

Season	Median age (years) at time of death
2014-2015	85
2015-2016	68
2016-2017	86
2017-2018	85
2018-2019	75
<b>2019-2020</b>	<b>72.5 (to date)</b>

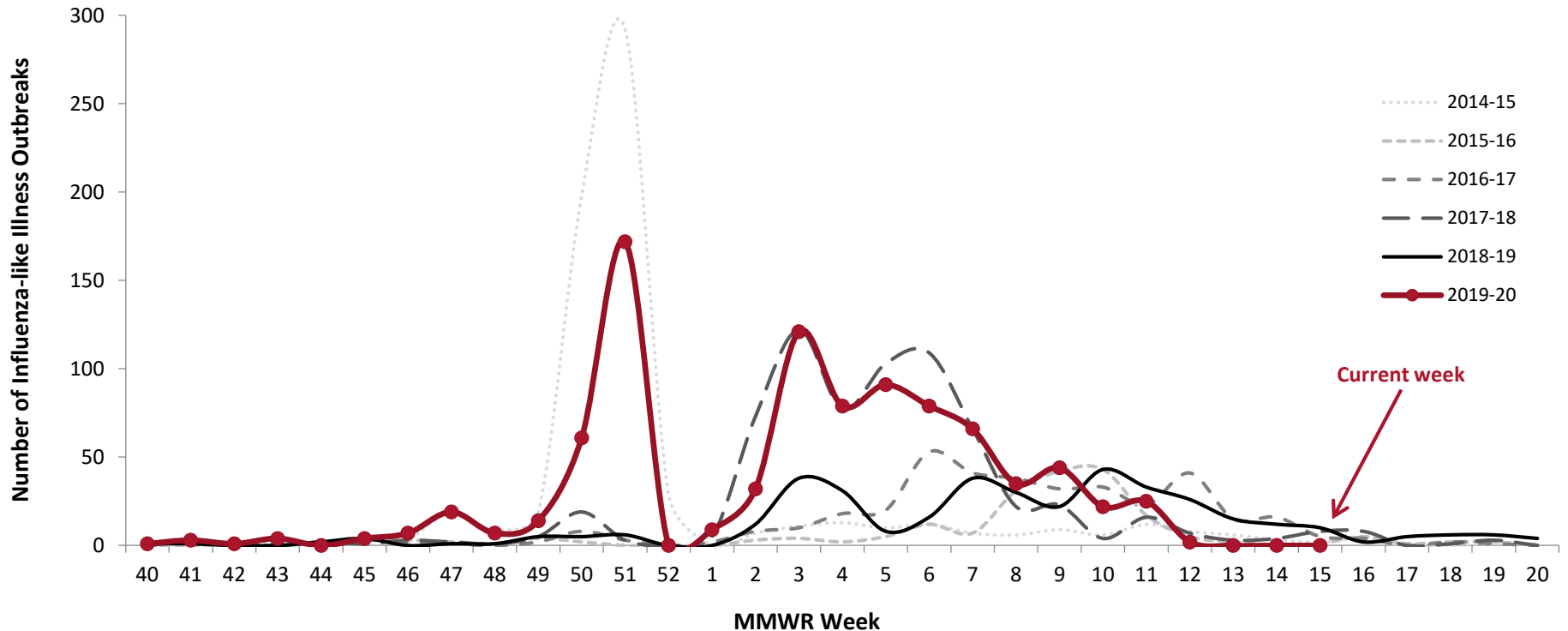
\*Influenza Surveillance Network

# Respiratory Disease Outbreak Surveillance

## School Outbreaks

K-12 schools report an outbreak of influenza-like illness (ILI) when the number of students absent with ILI reaches 5% of total enrollment or three or more students with ILI are absent from the same elementary classroom.

### Influenza-like Illness (ILI) in Schools by Season

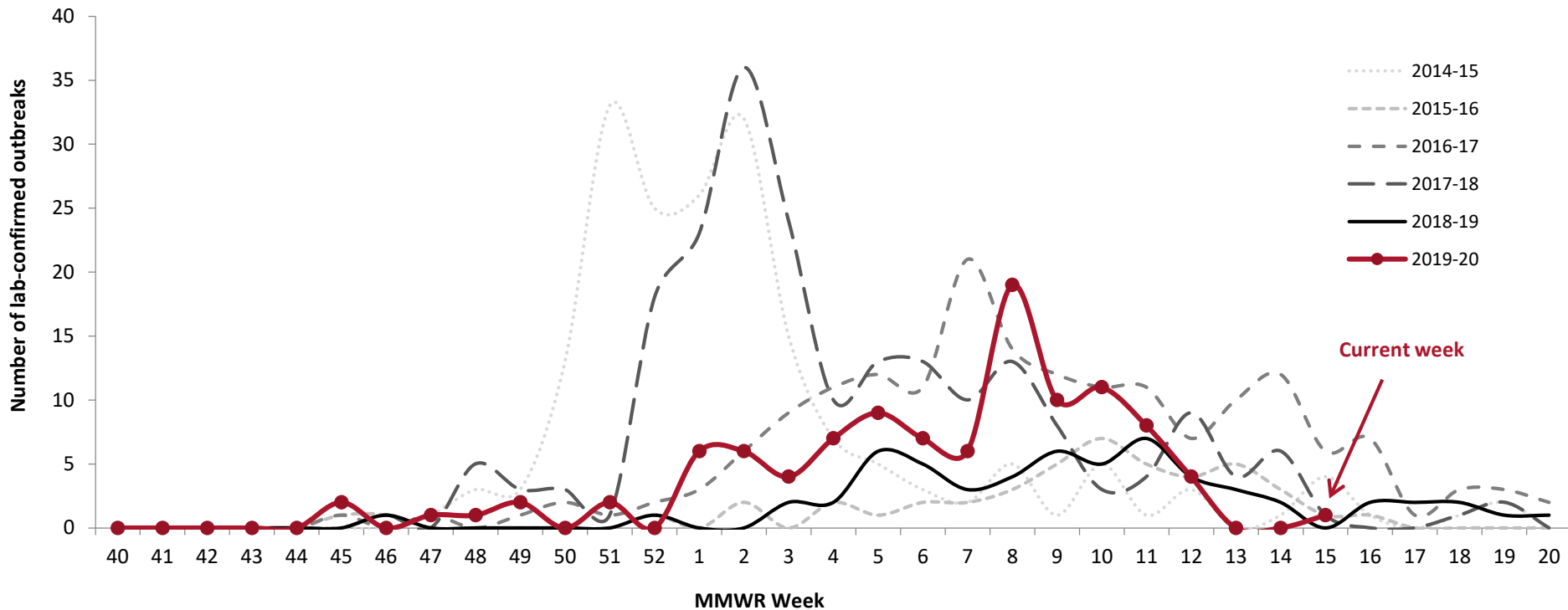


New school outbreaks this week	New school outbreaks last week	Total this season (to date)
0	0	921

## Long-Term Care (LTC) Outbreaks

LTC facilities report to MDH when they suspect an outbreak of influenza in their facility. Laboratory-confirmed outbreaks are reported here.

### Confirmed Influenza Outbreaks in LTC by Season

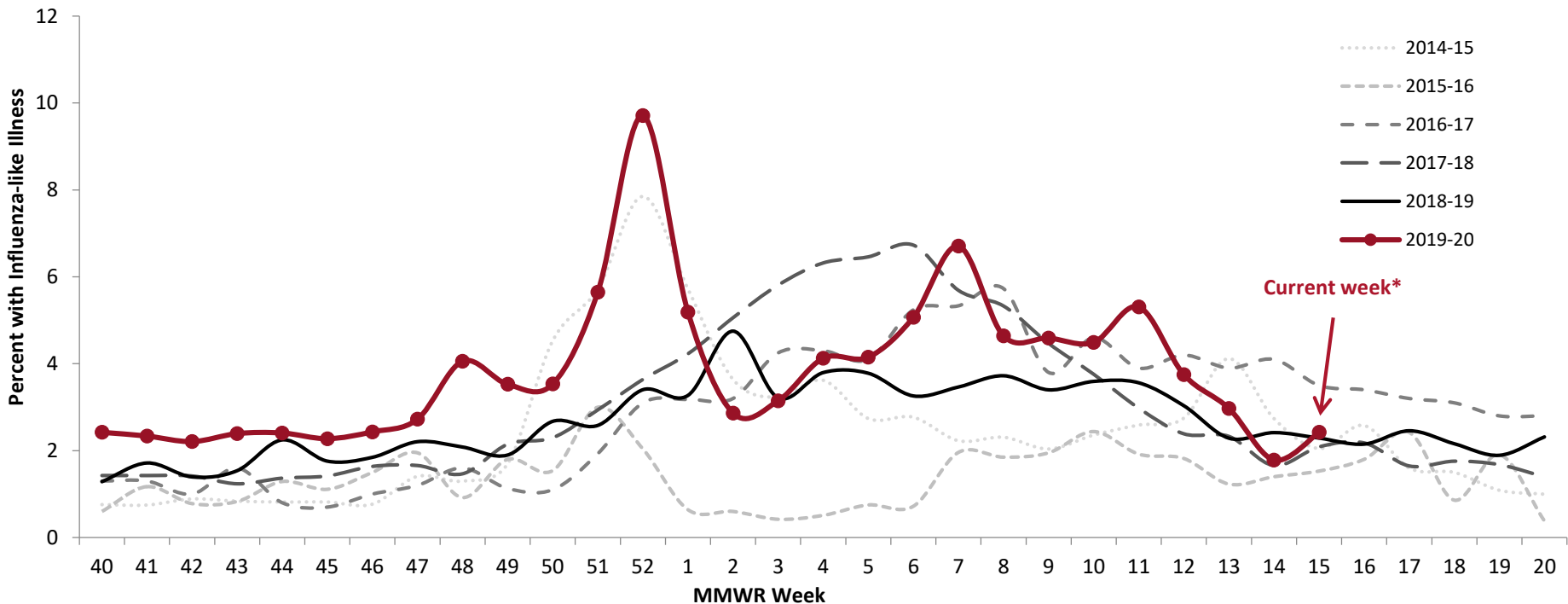


New LTC outbreaks this week	New LTC outbreaks last week	Total this season (to date)
1	0	109

# Sentinel Provider Surveillance (Outpatients)

MDH collaborates with healthcare providers who report the total number of patients seen and the total number of those patients presenting to outpatient clinics with influenza-like illness.

## Percentage of Persons Presenting to Outpatient Clinics with Influenza-Like Illness (ILI)



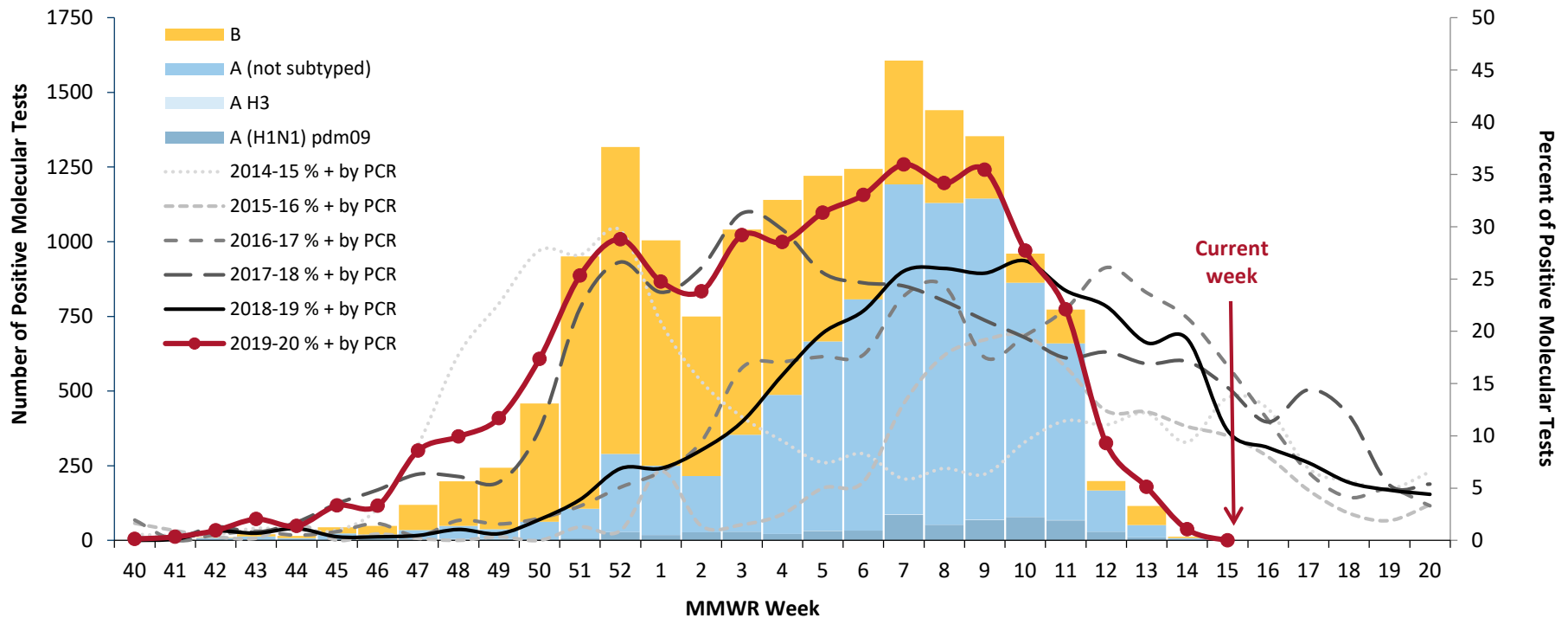
% of outpatients with ILI this week	% of outpatients with ILI last week
2.4%	1.8%

\* Indicates current week-data may be delayed by 1 or more weeks

# Laboratory Surveillance

The MN Lab System (MLS) Laboratory Influenza Surveillance Program is made up of more than 310 clinic- and hospital-based laboratories, voluntarily submitting testing data weekly. These laboratories perform rapid testing for influenza and Respiratory Syncytial Virus (RSV). Significantly fewer labs perform PCR testing for influenza and three also perform PCR testing for other respiratory viruses. MDH-PHL provides further characterization of submitted influenza isolates to determine the hemagglutinin serotype to indicate vaccine coverage. Tracking the laboratory results assists healthcare providers with patient diagnosis of influenza-like illness and provides an indicator of the progression of the influenza season as well as prevalence of disease in the community.

## Specimens Positive for Influenza by Molecular Testing\*, by Week



% molecular tests positive this week	% molecular tests positive last week
0.0%	1.1%

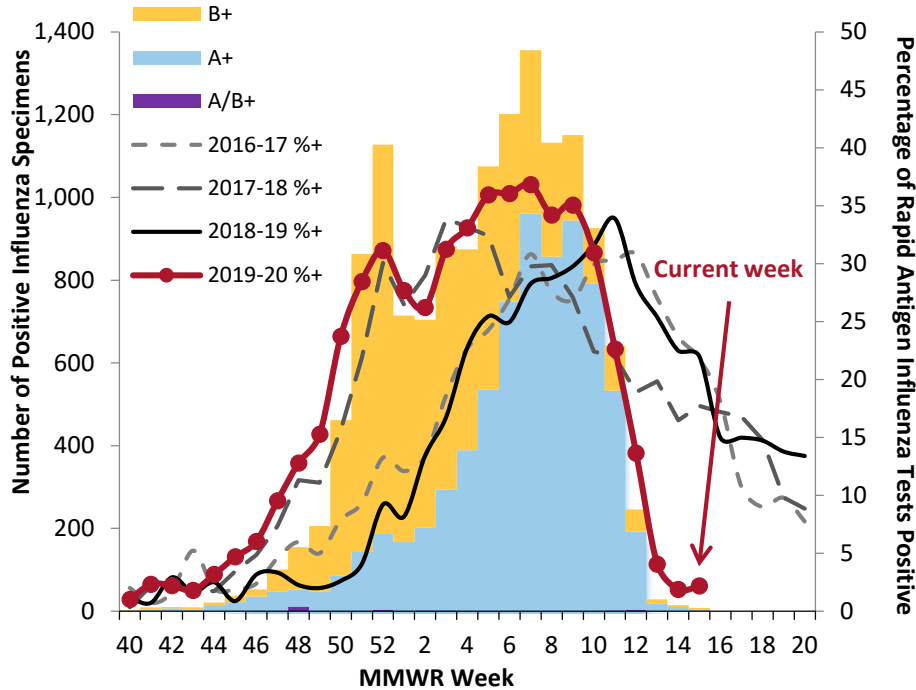
\* Beginning in 2016-17, laboratories report results for rapid molecular influenza tests in addition to RT-PCR results



# Laboratory Surveillance (continued)

## MLS Laboratories – Influenza Testing

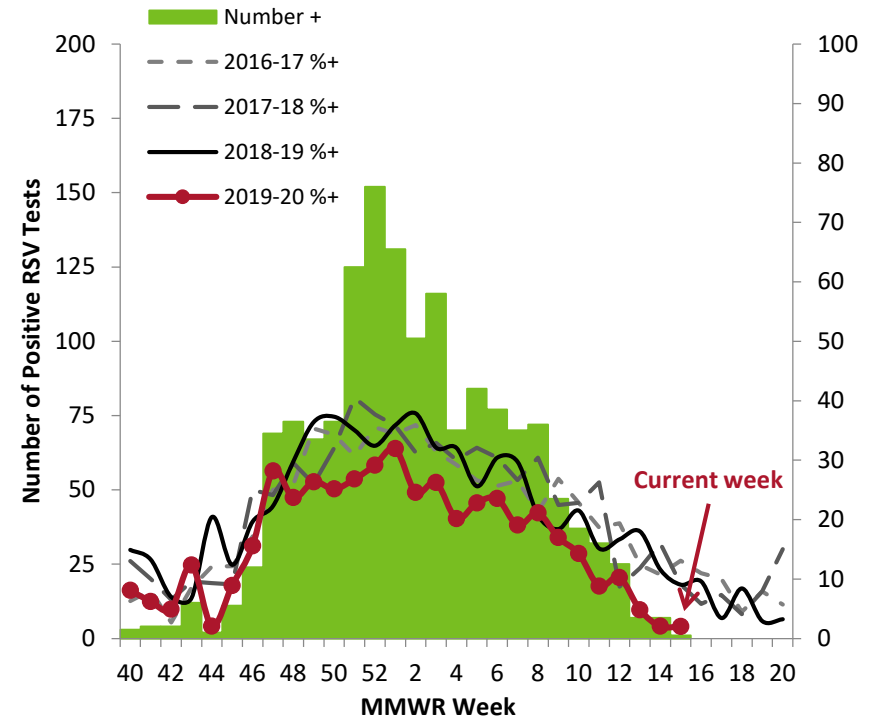
### Specimens Positive by Influenza Rapid Antigen Test, by Week



Region	% rapid antigen influenza tests + (current week)
Central	0%
Metro	6%
Northeast	0%
Northwest	0%
South Central	0%
Southeast	5%
Southwest	5%
West Central	0%
State (overall)	2%

## MLS Laboratories – RSV Testing

### Specimens Positive by RSV Rapid Antigen Test, by Week

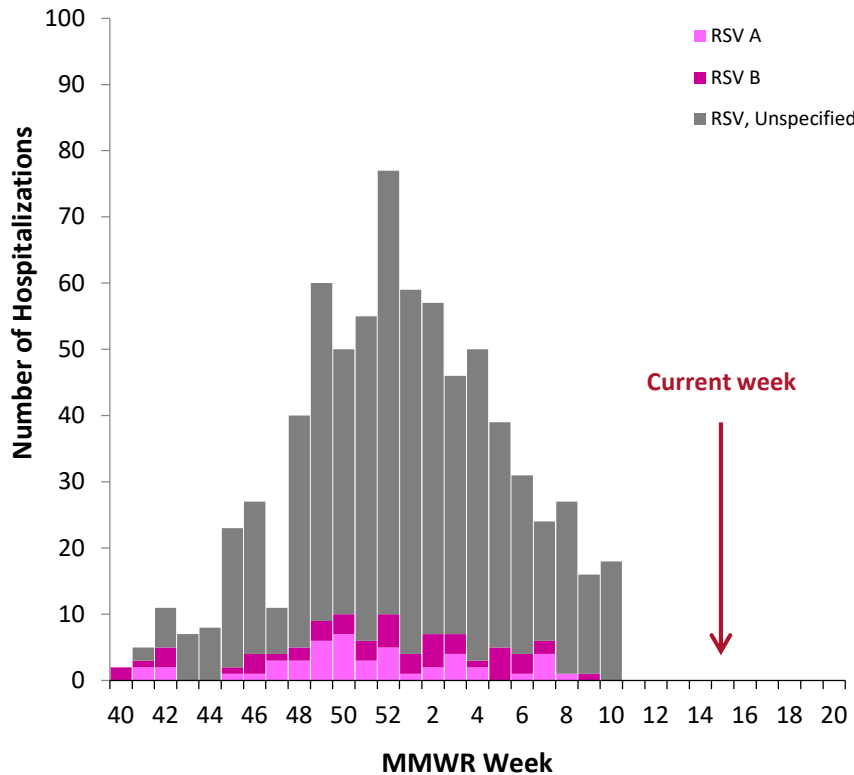


Region	% rapid antigen RSV tests + (current week)
Central	0%
Metro	0%
Northeast	0%
Northwest	---
South Central	---
Southeast	0%
Southwest	100%
West Central	0%
State (overall)	2%

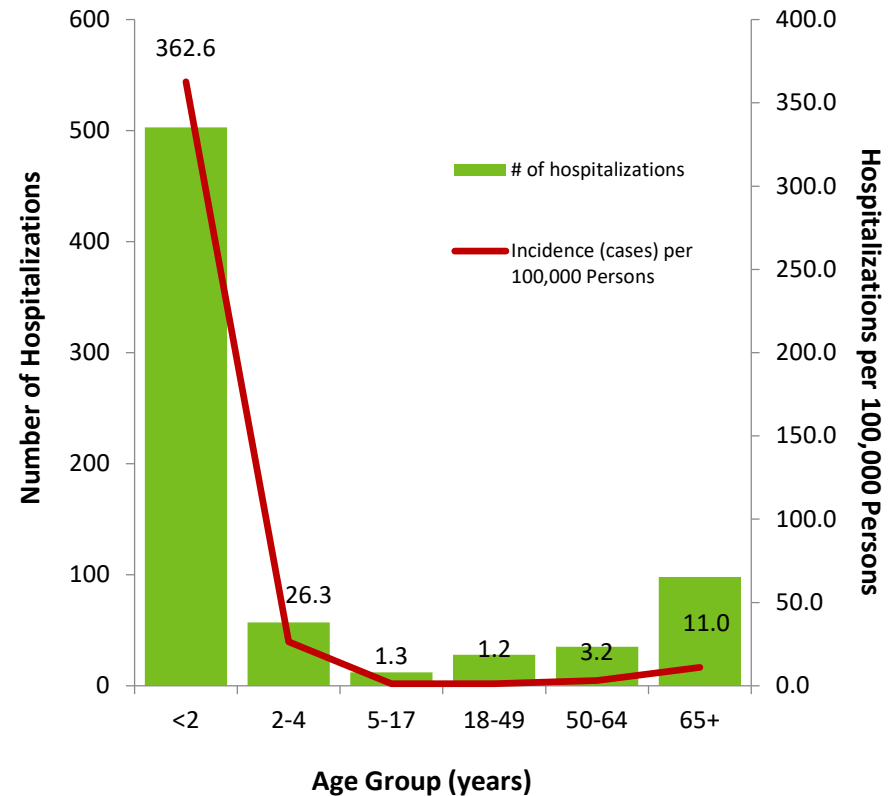
# Hospitalized RSV Surveillance

Surveillance for respiratory syncytial virus (RSV) began in September 2016. Hospitalized inpatients of all ages who reside in the 7-county Twin Cities metropolitan area (Anoka, Carver, Dakota, Hennepin, Ramsey, Scott, and Washington) with laboratory-confirmed RSV are reportable. **Due to the need to confirm reports and reporting delays, consider current week data preliminary.**

## Hospitalized RSV Cases by Subtype, Minnesota



## Number of RSV Hospitalizations and Incidence by Age, Minnesota



Hospitalizations this week

n/a

Hospitalizations last week

n/a

Total hospitalizations

733

Median age at time of admission

9 months

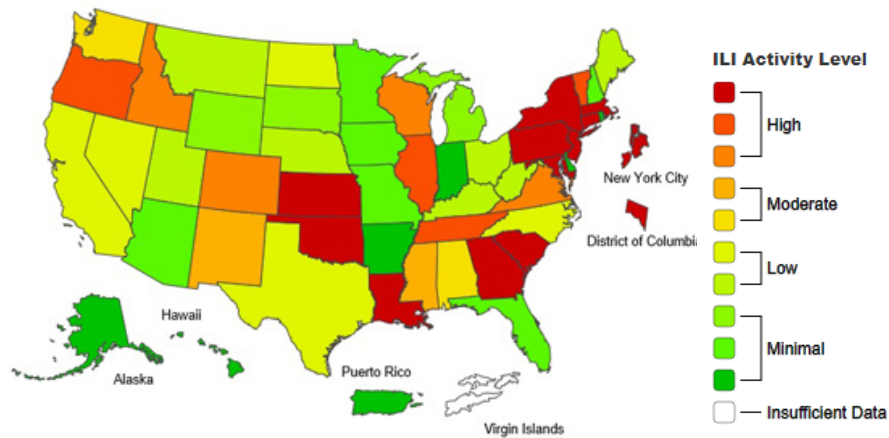
# Weekly U.S. Influenza Surveillance Report

2019-2020 Influenza Season Week 14, ending April 4, 2020

Note: The COVID-19 pandemic is affecting healthcare seeking behavior, impacting data from ILINet. ILINet data should be interpreted with caution.

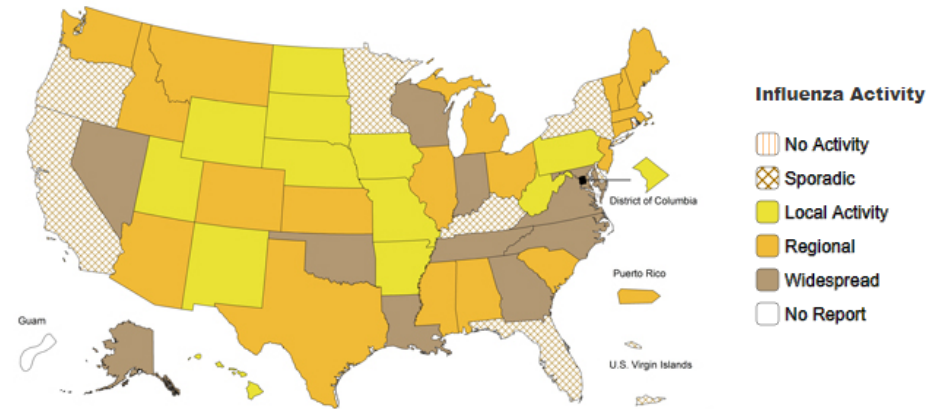
Laboratory confirmed flu activity as reported by clinical laboratories continues to decrease sharply and is now low. Influenza-like illness activity, while lower than last week, is still elevated.

## Influenza-Like Illness (ILI) Activity: Outpatient Illness



The number of jurisdictions experiencing high ILI activity decreased from 31 last week to 21 this week.

## Geographic Spread of Influenza



The number of jurisdictions reporting regional or widespread influenza activity decreased from 41 last week to 31 this week.

## Key Messages from CDC

- Nationally, the percent of laboratory specimens testing positive for influenza at clinical laboratories continued to decrease and is now low.
- ILI activity continued to decrease nationally but remains elevated.
- Recent changes in healthcare seeking behavior, including increasing use of telemedicine and recommendations to limit emergency department (ED) visits to severe illness, as well as increasing levels of social distancing, are affecting the number of persons with ILI and their reasons for seeking care in outpatient and ED settings.
- Laboratory confirmed influenza-associated hospitalization rates for the U.S. population overall are higher than most recent seasons and rates for children 0-4 years and adults 18-49 years are the highest CDC has on record for these age groups, surpassing rates reported during the 2009 H1N1 pandemic. Hospitalization rates for school-aged children (5-17 years) are higher than any recent regular season but remain lower than rates experienced by this age group during the pandemic.
- The percent of deaths associated with pneumonia and influenza is above the epidemic threshold. The increase is due to an increase in pneumonia deaths rather than influenza deaths and likely reflects COVID-19 activity.
- 166 influenza-associated deaths in children have been reported so far this season. This number is high compared to recent seasons, but remains lower than the 2017-2018 season during which 188 pediatric deaths were reported.
- CDC estimates that so far this season there have been at least 39 million flu illnesses, 410,000 hospitalizations and 24,000 deaths from flu.