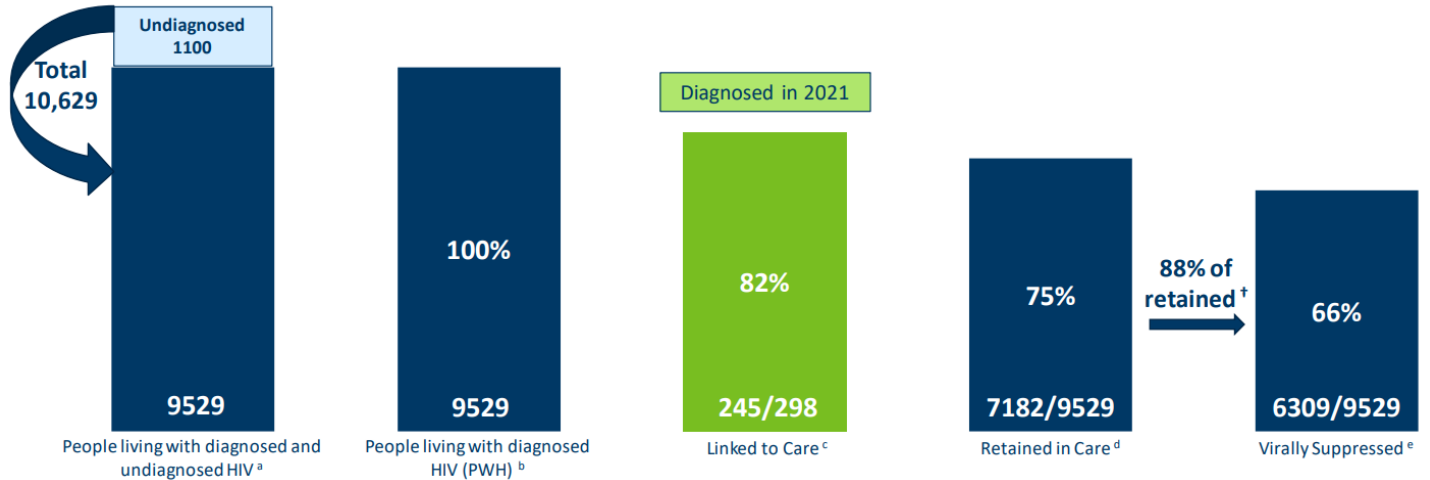


## Percentages of people with HIV engaged in selected stages of the care continuum, Minnesota, 2022



<sup>a</sup> Defined as persons undiagnosed (estimate 1,100 (450-1,800), 95% CI) and persons diagnosed (n=9,529) aged 13 or more with HIV infection (regardless of stage at diagnosis) through year-end 2021, who were alive at year-end 2022.

<sup>b</sup> Defined as persons diagnosed aged 13 or more with HIV infection (regardless of stage at diagnosis) through year-end 2021, who were alive at year-end 2022.

<sup>c</sup> Calculated as the percentage of persons linked to care within 30 and 90 days after initial HIV diagnosis during 2021. Linkage to care is based on the number of persons diagnosed during 2021 and is therefore shown in a different color than the other bars with a different denominator.

<sup>d</sup> Calculated as the percentage of persons who had  $\geq 1$  CD4 or viral load test results during 2022 among those diagnosed with HIV through year-end 2021 and alive at year end 2022.

<sup>e</sup> Calculated as the percentage of persons who had suppressed viral load ( $\leq 200$  copies/mL) at most recent test during 2022, among those diagnosed with HIV through year-end 2021 and alive at year end 2022.

<sup>†</sup> Calculated as number of persons who had suppressed VL ( $\leq 200$  copies/mL) at most recent test during 2022, among those who were retained in care during 2022 (6,309/7,182).

Minnesota Department of Health  
651-201-5414  
[www.health.state.mn.us/hiv](http://www.health.state.mn.us/hiv)

9/19/2023

To obtain this information in a different format, call: 651-201-5414.