

WIC Matters Newsletter for Vendors

APRIL 2023 VOLUME 23 ISSUE 1

- Mapping fresh produce at Integrated Stores
- 2% milk no longer allowed for most beginning June 1st
- Enfamil Formula update
- Transaction errors with sale items at Integrated Stores
- Reauthorization of WIC vendors complete – Thank you!
- Educational materials at your next visit
- Email communications

Mapping Fresh Produce at Integrated Stores

Many of you know that mapping or linking fresh produce must happen at stores with integrated Point of Sale (POS) systems. What this means is that when a fresh produce item has a UPC, it must be linked to a like PLU in the system for that item. Minnesota WIC does not keep track of all the UPCs at various stores, so stores must make sure that those UPCs will scan for WIC. This process is typically done by a corporate office or scanning coordinator, depending on the store type.



There have been many reports lately of stores not having items mapped, and we do understand that it is a challenge to map/link the item before it gets placed for sale, but it is important to keep up with mapping, so that participants are able to purchase fresh fruits and vegetables and they are not paying out of pocket for items WIC should be covering.

For more information on mapping, you may visit the Minnesota WIC website and select the “Mapping” drop down menu:

[WIC Vendors \(www.health.state.mn.us/people/wic/vendor/index.html\)](http://www.health.state.mn.us/people/wic/vendor/index.html). If you need to find the list of PLUs that are in the Minnesota WIC Approved Product List (APL) please see the following: [UPC Codes - MN WIC APL \(Approved Product List\)](#)

(www.health.state.mn.us/people/wic/vendor/fpchng/upc/index.html). You will have to scroll through the tabs at the bottom of the spreadsheet to find “Fresh Produce PLUs”.

2% milk no longer allowed for most beginning June 1st

As part of the Public Health Emergency that started with COVID-19, WIC was allowed a federal waiver to offer flexibility for 2% milk to participants with skim and 1% milk benefits. That waiver is expiring and on **June 1, 2023, 2% milk will NO longer be allowed for those WIC participants, and those who have skim and 1% milk on their WIC cards will only be allowed skim or 1% milk.** This may affect a number of your WIC customers who might be used to getting 2% milk with their low-fat milk benefits. Participants will be educated on this change in the coming months and app notifications will go out to all users of the My Minnesota WIC app.

Formula Update

Because of supply issues, we have been able to offer substitute formulas, like Similac, Gerber, and store brands in place of Enfamil formulas. The waiver for allowing these substitutes ends on April 29, 2023. You should begin decreasing your orders for formula other than Enfamil products. The following tables show the contract formulas and their sizes and Enfamil large can substitutes, which will be allowed until the end of May. These larger can substitutes will deduct two or three cans of the regular contract size from the WIC card, depending on the size of the substitute. Participants should use their My Minnesota WIC app to determine which formula and how many cans they have on their WIC cards. They are being educated on this change at their WIC appointments and through app notifications.

If you are experiencing issues ordering stock of Enfamil formula, please email health.wicvendor@state.mn.us, and include your distributor information.

Contract formulas and sizes

12.5 oz powder Enfamil Infant UPC 300871365421
13 oz concentrate Enfamil Infant UPC 300871367418
12.9 oz powder Enfamil A.R. UPC 300870201423
12.4 oz powder Enfamil Gentlease UPC 300875100691
12.4 oz powder Enfamil Reguline UPC 300875111321
12.4oz powder Similac Soy Isomil UPC 070074559643
13.0 oz concentrate Similac Soy Isomil UPC 070074569765

Larger can sizes allowed through May 2023 (deducts 2-3 cans of contract size formula)

Enfamil Infant, 12.5oz powder substitutes

29.4 oz powder Enfamil Infant UPC 300875121276
21.1 oz powder Enfamil Infant UPC 300875119761
28.3 oz powder Enfamil NeuroPro Infant UPC 300875121092
31.4 oz powder Enfamil NeuroPro Infant UPC 300875121115

Enfamil Gentlease, 12.4oz powder substitutes

27.7 oz powder Enfamil Gentlease UPC 300875121252
19.9 oz powder Enfamil Gentlease UPC 300875119785
19.5 oz powder Enfamil NeuroproGentlease UPC 300875121191
27.4 oz powder Enfamil NeuroproGentlease UPC 300875121214
30.4 oz powder Enfamil NeuroproGentlease UPC 300875121238
35.2 oz powder Enfamil NeuroproGentlease UPC 300875127506

Enfamil AR, 12.9oz powder substitutes

30.4 oz powder Enfamil AR UPC 300875100967
19.5 oz powder Enfamil AR UPC 300870201652
27.4 oz powder Enfamil AR UPC 300875126424

Enfamil Reguline 12.4oz powder substitutes

19.5 oz powder Enfamil Reguline UPC 300875111574
--

Transaction Errors with Sale Items at Integrated Stores



Even though rare, sometimes transaction errors happen at stores with integrated POS systems. Most often the cause is sale prices not set up correctly for WIC. When these errors happen, the whole transaction for WIC fails, resulting in the participant not being able to purchase any of their WIC foods. These errors happen typically at medium-sized independent stores but can also happen at some larger chain stores.

The state WIC office monitors and communicates with stores that have these errors, but one of the ways to troubleshoot at the register at the time of checkout, if an

error happens, is to remove the sale items from the transaction and re-ring it without the sale item or with just one of the sale items, and then ring the additional sale items one by one.

If you run into errors like this at your store or get an email from the WIC office about an error like this, you can review how to set up sale items in your POS manual, or you can contact your service provider. It is extremely important to correct the error, since it can continue to cause other WIC transactions to fail.

Reauthorization Complete – Thank you!

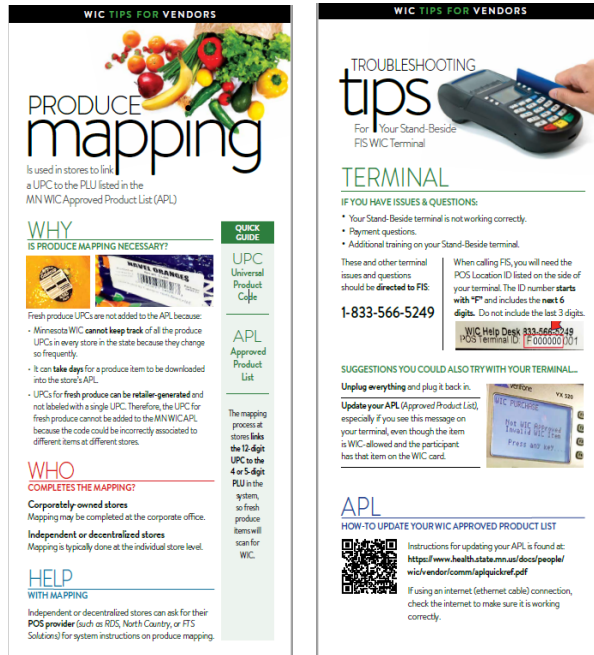
Unless advance notice was given that your contract would not be renewed, each of your stores will be in a new authorization period that began April 1, 2023. Your current contracts will run through March 31, 2026. You do not need to do anything in advance of your 2026 contract end date, and we will initiate the process again through email in 2025.

Thank you for serving WIC participants in your community! Without your valued partnership, the WIC Program would not be able to function. We appreciate the customer service you provide to our WIC participants every day!

New Education Materials at your next Monitoring Visit

A couple of new materials have been created for WIC-authorized stores. These are on color card stock, so they may be used as training materials. One of the materials is for integrated stores and gives information on produce mapping, the importance of it, and what to do if a

fresh produce item doesn't ring up as WIC allowed. The other material is for stores with Stand-Beside terminals and shows tips when using the terminals and troubleshooting, if an item doesn't ring up as allowed. These materials will be provided at your next Monitoring Visit.



Email communications – What you need to do

Important communications come to Minnesota WIC vendors through our health.wicvendor@state.mn.us email address. This may show up in your email from MN_MDH_wicvendor. Some vendors have reported that these communications sometimes go to their spam folders. Please check your spam folder from time to time to make sure you are not missing any important communications from the Minnesota WIC Program.

It is important to make sure you have your current email address in your store record. If you need to update your email address with the WIC Program, please visit our website to make the change:

[Unsubscribe - MN WIC Vendor Emails \(https://survey.vovici.com/se/56206EE331D67222\)](https://survey.vovici.com/se/56206EE331D67222).

Minnesota Department of Health - WIC Program, 625 Robert St N, PO BOX 64975, ST PAUL MN 55164-0975; 1-800-657-3942, health.wic@state.mn.us, www.health.state.mn.us; to obtain this information in a different format, call: 1-800-657-3942.

This institution is an equal opportunity provider.