

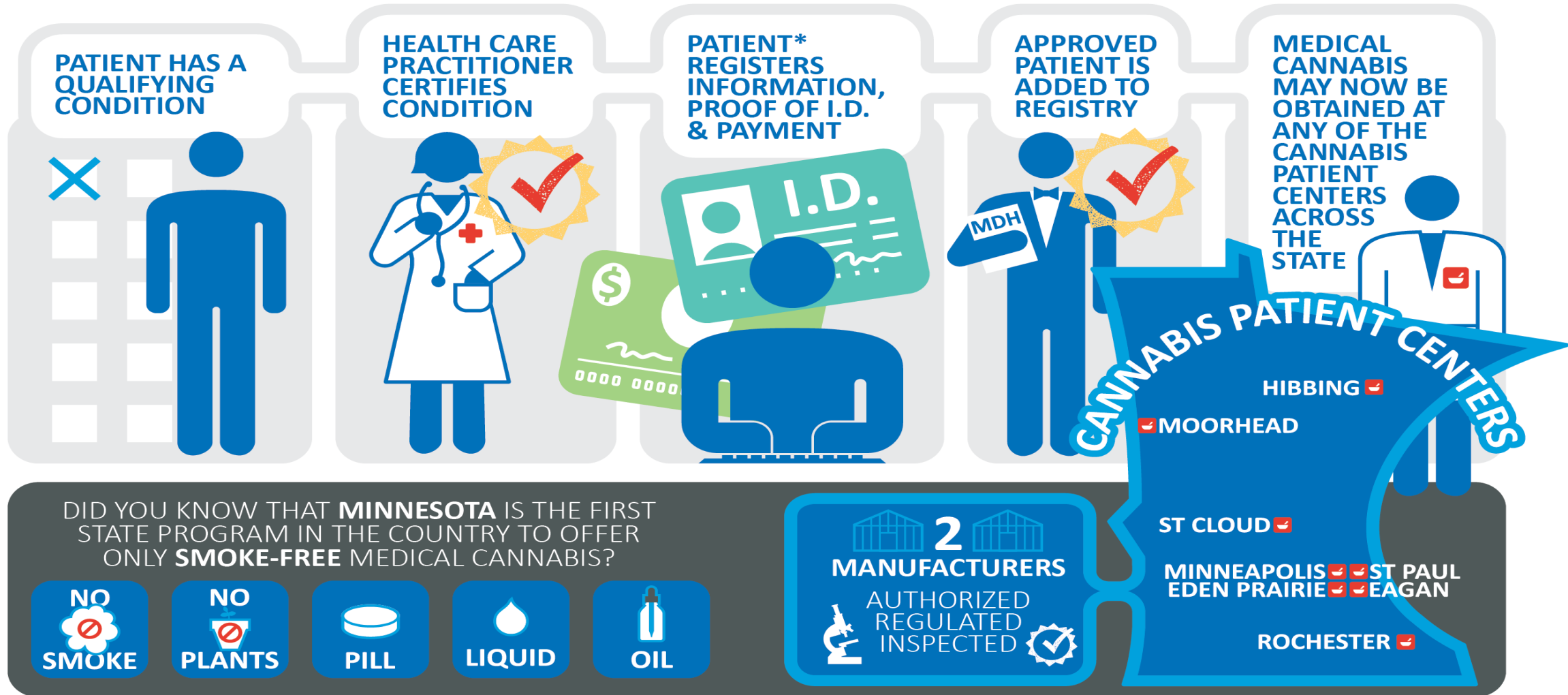
MINNESOTA MEDICAL CANNABIS PROGRAM UPDATE

MICHELLE LARSON, DIRECTOR
OFFICE OF MEDICAL CANNABIS

SEPTEMBER 25, 2015

MEDICAL CANNABIS PATIENT REGISTRY

Current status



*Care-giver may represent a patient by applying and meeting conditions including a background check.

Patient Registry

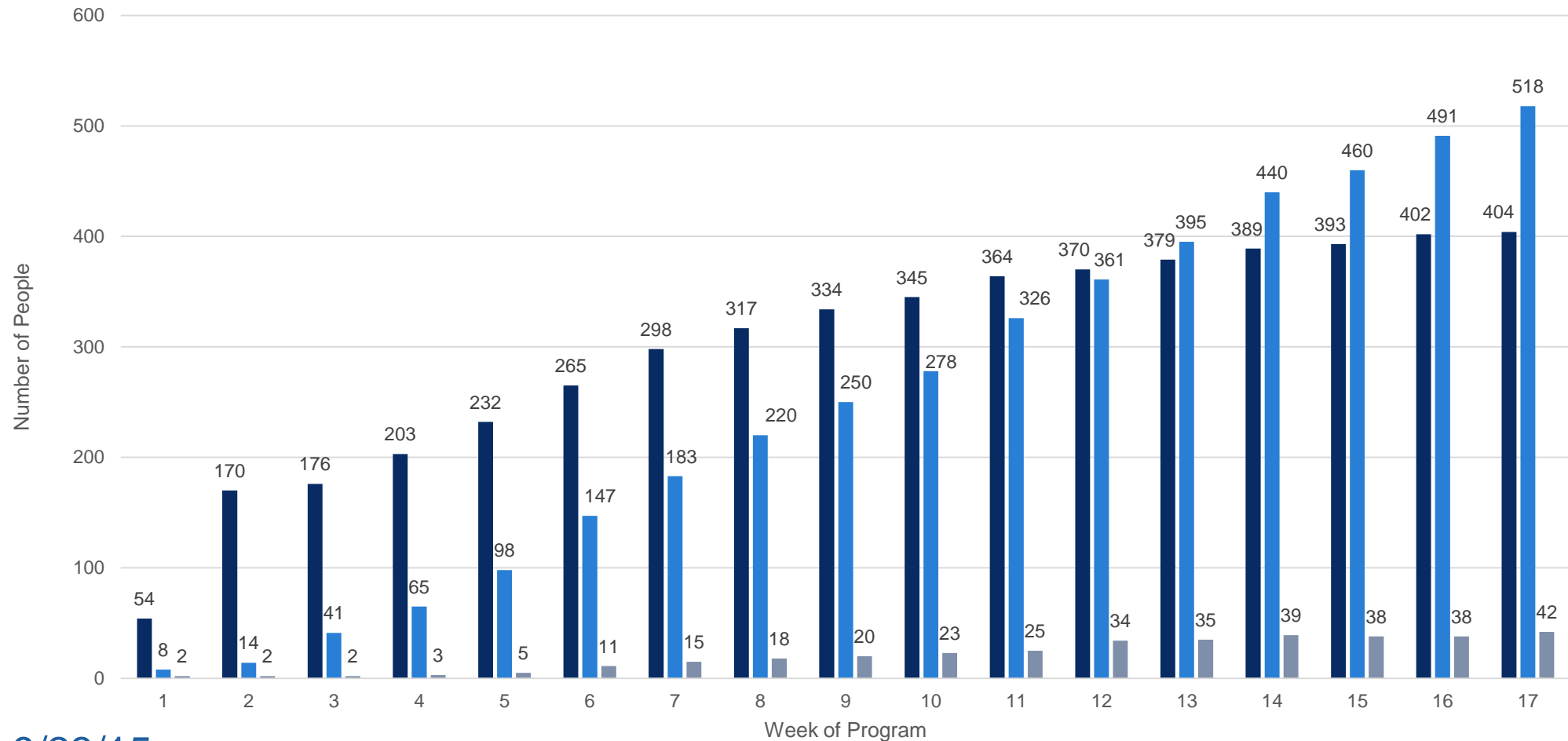
- Soft launch – June 2015
- Program launch – July 1, 2015

- First quarter nearly complete
 - data collection

- Data security

Registry Profiles – general counts

MN Medical Cannabis Patient Registry Numbers



As of 9/23/15

■ Approved Health Care Practitioners ■ Approved Patients ■ Approved Caregivers

Patients – age group profiles

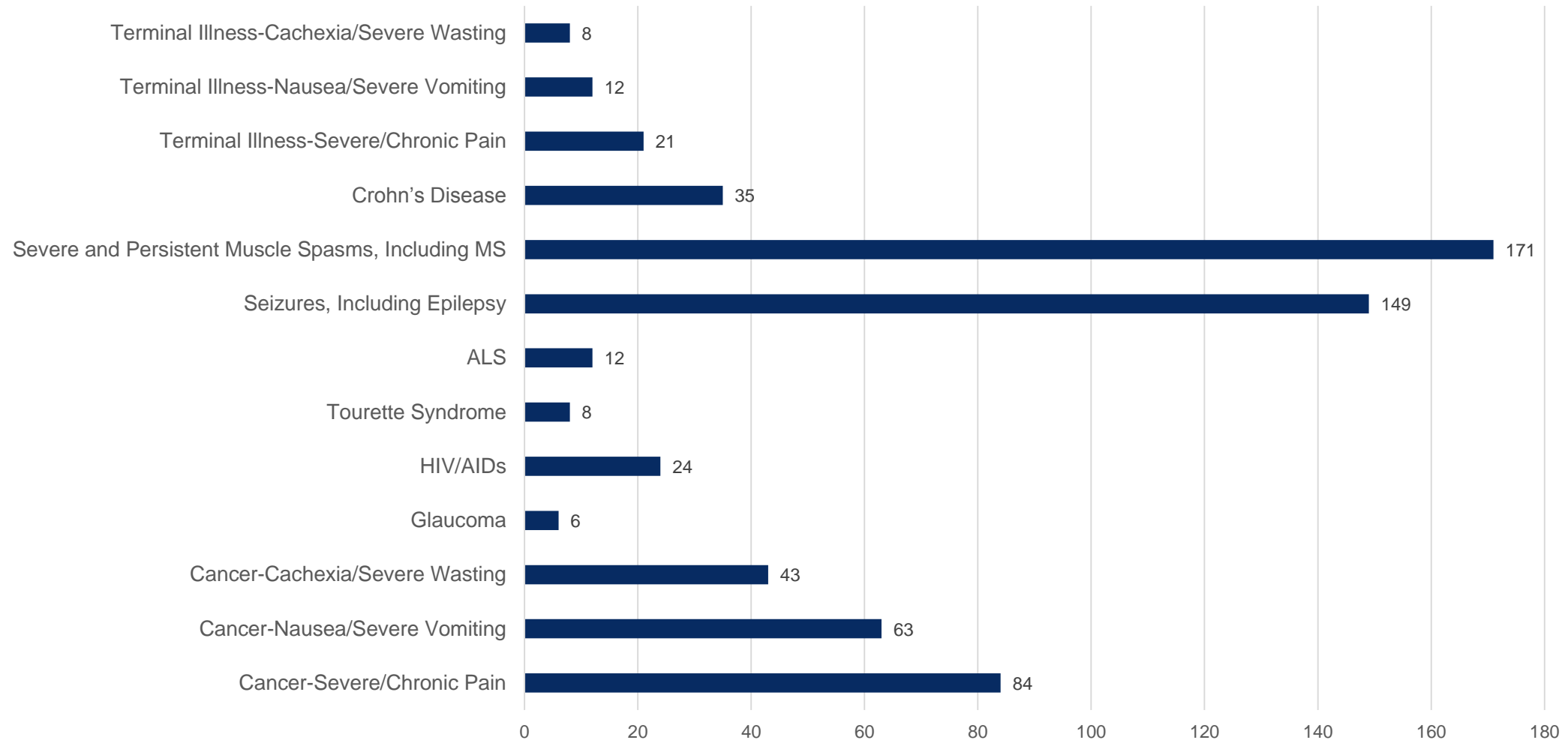
	Number	Percent
• Less than 18 yrs:	94	18.2%
• 18 yrs to 30 yrs:	70	13.5%
• 31 yrs to 50 yrs:	167	32.2%
• 51 yrs to 70 yrs:	162	31.3%
• 71 yrs and older:	25	4.8%

Patients – gender profile

	Number	Percent
•Female:	220	42.5%
•Male:	296	57.1%
•No answer	2	.4%

Patients – Qualifying Medical Conditions

Approved Patients by Condition



Situation: Caregiver Security Issue in Registry:

- Potential data security concern that was limited in scope that associated with a link MDH emailed to people applying to become caregivers in the state's medical cannabis program.
- Link sent to these applicants did not return to the logon screen, creating the possibility that if other parties acquired the link they could access certain information submitted by that caregiver applicant as a part of the application process.
- Only the person with the email that contained the link would have access to or see that information. However, if at some point the email containing the link was accessed by someone other than the caregiver, it potentially could have allowed access to the information submitted by the caregiver.

Response: Caregiver Security Issue in Registry

- MNIT@MDH was notified of an issue with the Caregiver registration email on the afternoon of Thursday, 9/17
- MNIT@MDH immediately assembled a core response team to work on the issue
- The immediate problem was contained by Thursday evening by putting a block on new Caregiver registrations
- The permanent fix was deployed at 6:00 a.m. on Tuesday 9/22 and the Caregiver registration was re-opened

Manufacturers

- Each opened one distribution facility (Cannabis Patient Center) on July 1, 2015
- Currently 3 Cannabis Patient Centers are open
- Each have own product lines
- Both manufacturers are here today

OTHER PROGRAM ELEMENTS

Current status

OMC Observational Research

- Led by Dr. Tom Arneson, MD
- IT capacity now being developed
- Two research scientists joined OMC staff in August
- Data sources:
 - Application/enrollment information
 - Transaction data
 - Surveys
 - Adverse event reports
 - Medical records (future)

Other statutory requirements

- Rulemaking:
 - Expedited manufacturer rules – Minn.R. 7440.0100 – 7400.2800
 - Expedited patient/health care practitioner rules – Minn.R. 7440.4000 – 7440.4018
 - Standard rulemaking proceeding – On-going
 - Rulemaking advisory committee of stakeholders
- Independent Laboratories:
 - Two have been approved by MDH
 - Continuous enrollment so could be more

OMC Communications and Outreach

Support Center

- Toll free and local phone numbers
- Open during business hours
- Assist patients and their caregivers through registration
- Assist health care practitioner registration; verification
- Troubleshoot registry issues, technical and administrative
- General research

OMC Communications and Outreach

OMC staff have completed over 90 presentations across the state

- Groups include
 - Medical facilities
 - Condition support associations
 - Law enforcement
 - County/Local health officials
 - Health care practitioner associations
 - General public-community sessions continue through October and are statewide

The OMC website is also a key part of the communication plan

- Has specific resources available for each role in the program
- Had over 30,000 unique hits in July and averaged 20,000 hits/month from June-Aug

INTRACTABLE PAIN PROCESS

Current status

Intractable Pain

- Intractable pain is defined in statute as “a pain state in which the cause of the pain cannot be removed or otherwise treated with the consent of the patient and in which, in the generally accepted course of medical practice, no relief or cure of the cause of the pain is possible, or none has been found after reasonable efforts.”

Intractable Pain

- Commissioner required to make decision by end of 2015 whether intractable pain should be added to list of qualifying conditions
- To support and provide information to the commissioner:
 - Eight member Advisory Panel
 - Literature review and grading of evidence; report due late September
 - Public input

Intractable Pain - advisory panel

- **First meeting: June 15, 2015**
 - Presentation on current status of pain management – Miles Belgrade, MD
- **Second Meeting: September 3, 2015**
 - Presentation on medical science supporting role for cannabis in managing pain – Kalpna Gupta, PhD; Public testimony in front of Panel
- **Third Meeting: October 6, 2015**
 - Presentation on addiction implications of medical cannabis for pain management, Charles Reznikoff, MD; Discussion of literature review by MN Evidence-based Practice Center, Mary Butler, PhD; begin deliberations
- **Fourth Meeting (if needed): October 29, 2015**
- **Goal: Recommendation by early November**

Intractable Pain - public input

- Written comments received through Office of Medical Cannabis website and posted on website.
 - Have received around 200 – mostly from patients who support inclusion of intractable pain
- Oral testimony in front of Advisory Panel September 3, 2015
- Opportunity for oral and written testimony at 11 presentations on MN medical cannabis program across the state

References and Resources

<http://www.health.state.mn.us/topics/cannabis/>

<http://www.lcc.leg.mn/mctrtf/>

<http://www.house.leg.state.mn.us/hrd/pubs/medcannabis.pdf>

<http://leafline labs.com/>

<http://minnesotamedicalsolutions.com/>