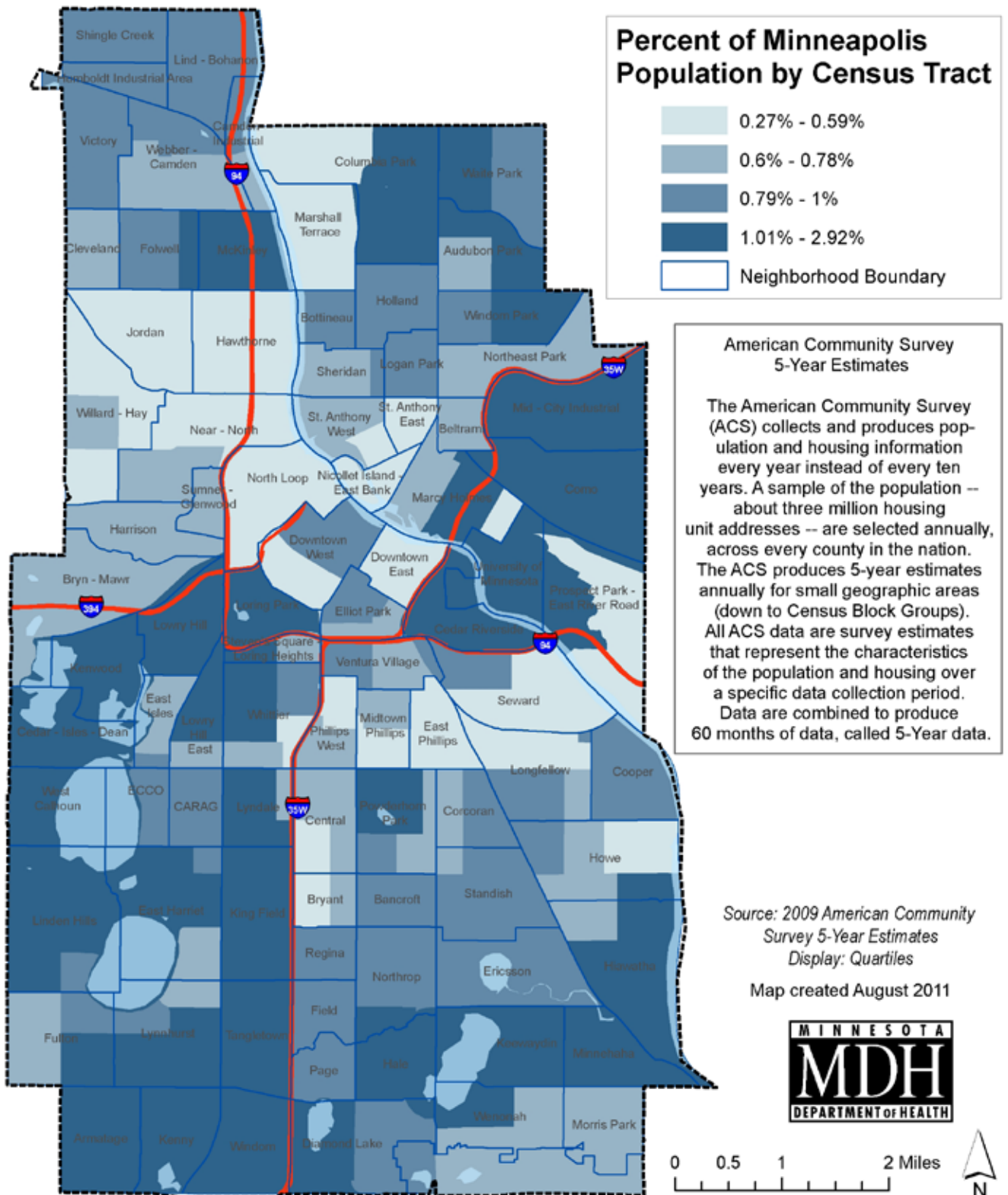


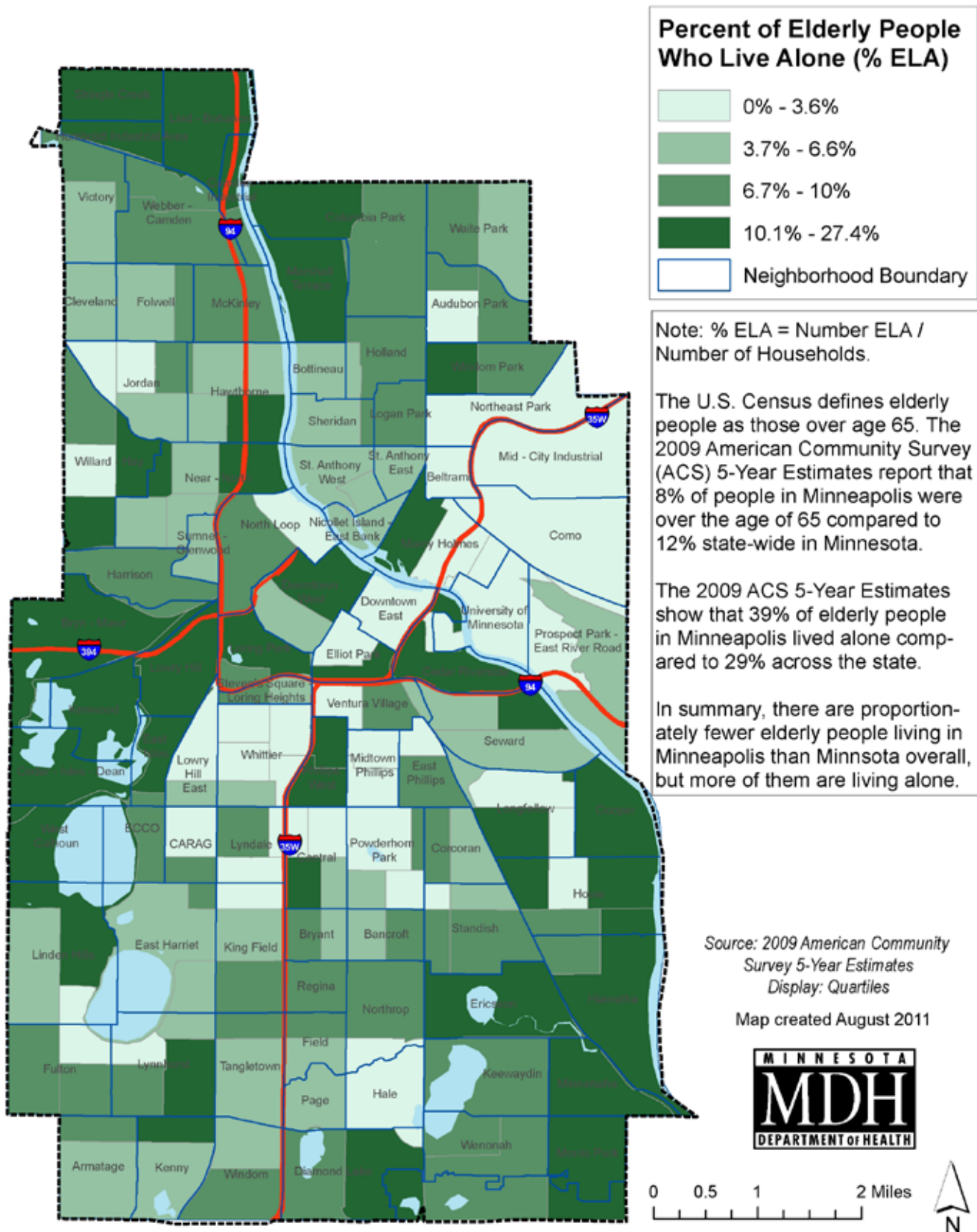
Appendix H: Minneapolis Case Study Maps

- Percent of population by census tract
- Percent of elderly living alone (ELA) by census tract
- Percent of population who live below the poverty line (BPL) by census tract
- Percent ELA overlaid by air conditioned residential buildings
- Percent BPL overlaid by air conditioned residential buildings
- Percent children (less than 5 years old) BPL overlaid by air conditioned residential buildings
- Percent ELA overlaid by public air conditioned spaces
- Percent BPL overlaid by public air conditioned spaces
- Percent children (less than 5 years old) BPL overlaid by public air conditioned spaces
- Percent ELA overlaid by special residential facilities
- Child/Day care centers
- Multi-unit residential buildings
- Land cover - percent impervious surface

Percent of Minneapolis Population by Census Tract



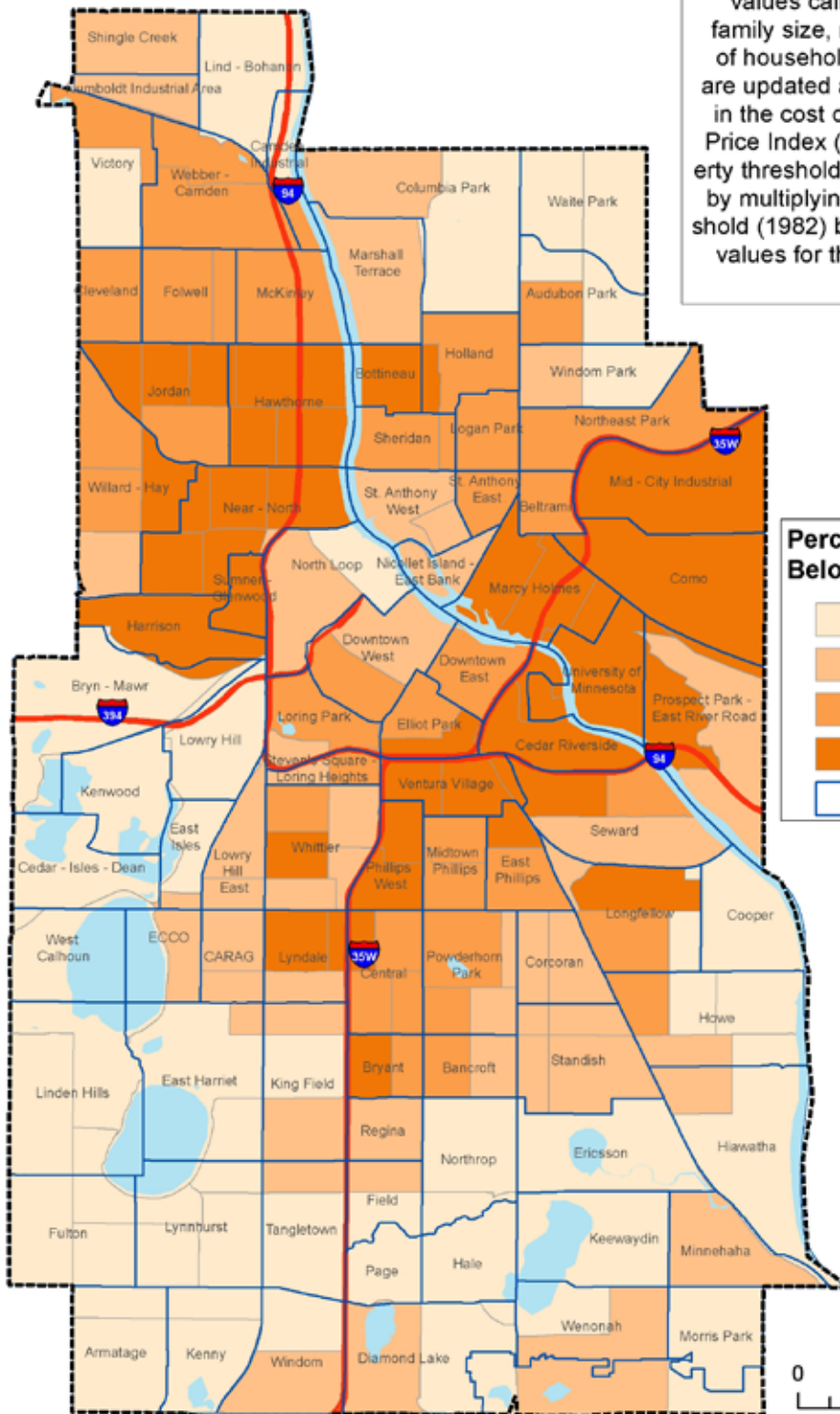
The Percent of Elderly People Who Live Alone in Minneapolis



Percent of People Who Live Below the Poverty Line

Poverty Threshold by Census Tract:

Poverty status is determined by comparing annual income to a set of dollar values called thresholds that vary by family size, number of children, and age of householder. The poverty thresholds are updated annually to allow for changes in the cost of living using the Consumer Price Index (CPI-U). The appropriate poverty threshold for each family is determined by multiplying the base-year poverty threshold (1982) by the average of monthly CPI values for the 12 months preceding the survey month.



Percent of People Who Live Below the Poverty Line (% BPL)

- 0.8% - 8.6%
- 8.7% - 22.9%
- 23% - 32.8%
- 32.9% - 68.7%

Neighborhood Boundary

Map created August 2011

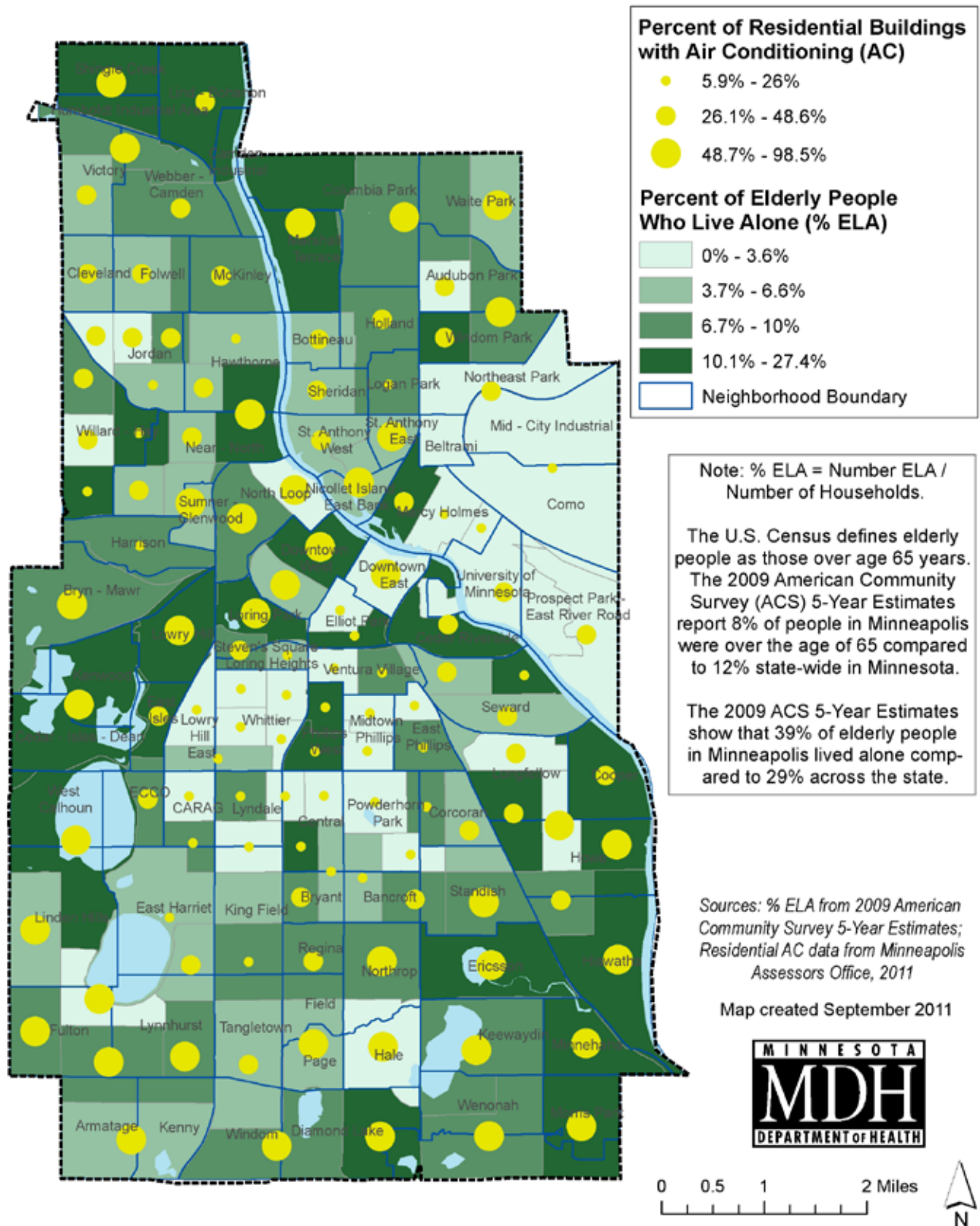
Source: 2009 American Community Survey 5-Year Estimates
Display: Quartiles



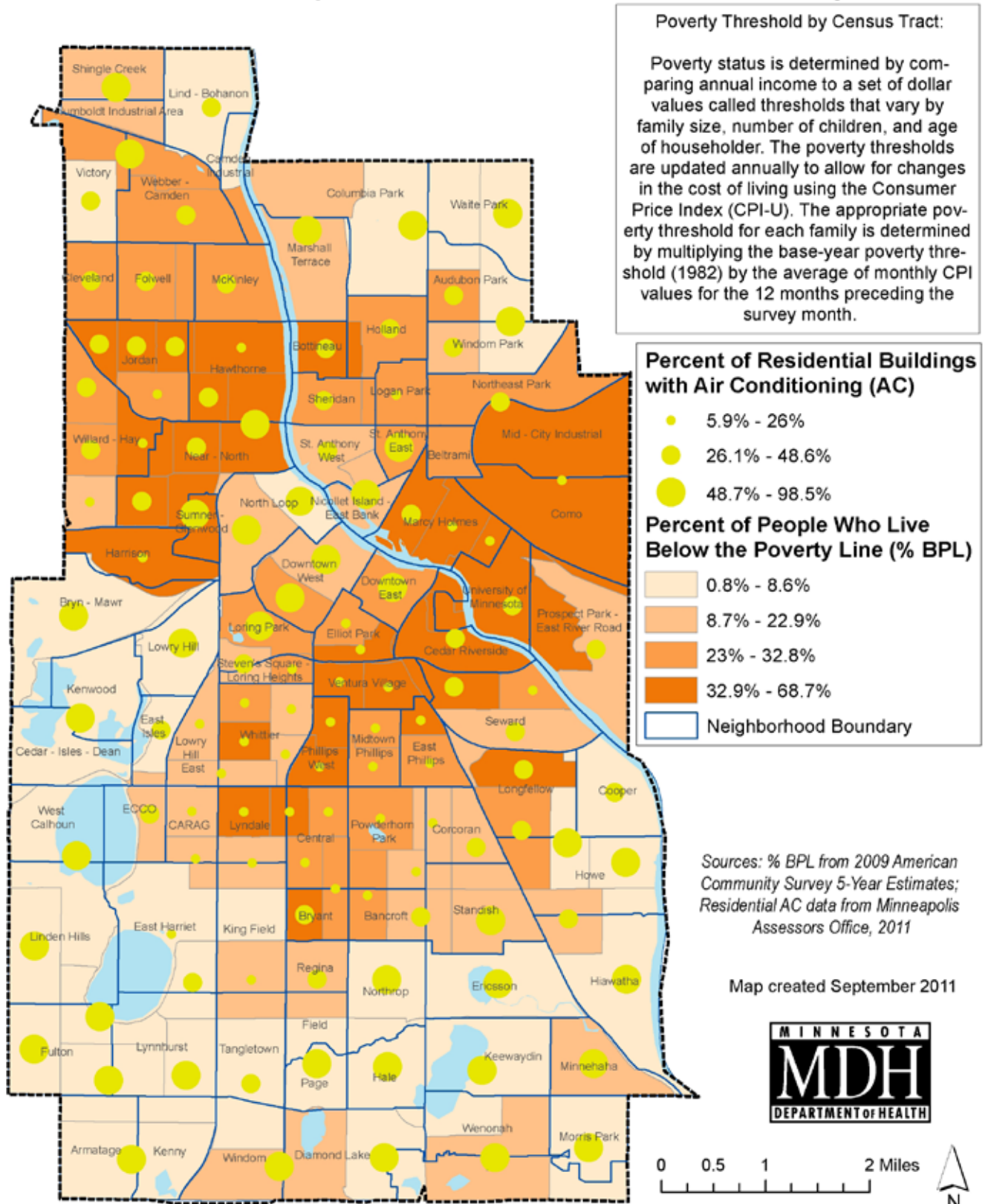
0 0.5 1 2 Miles



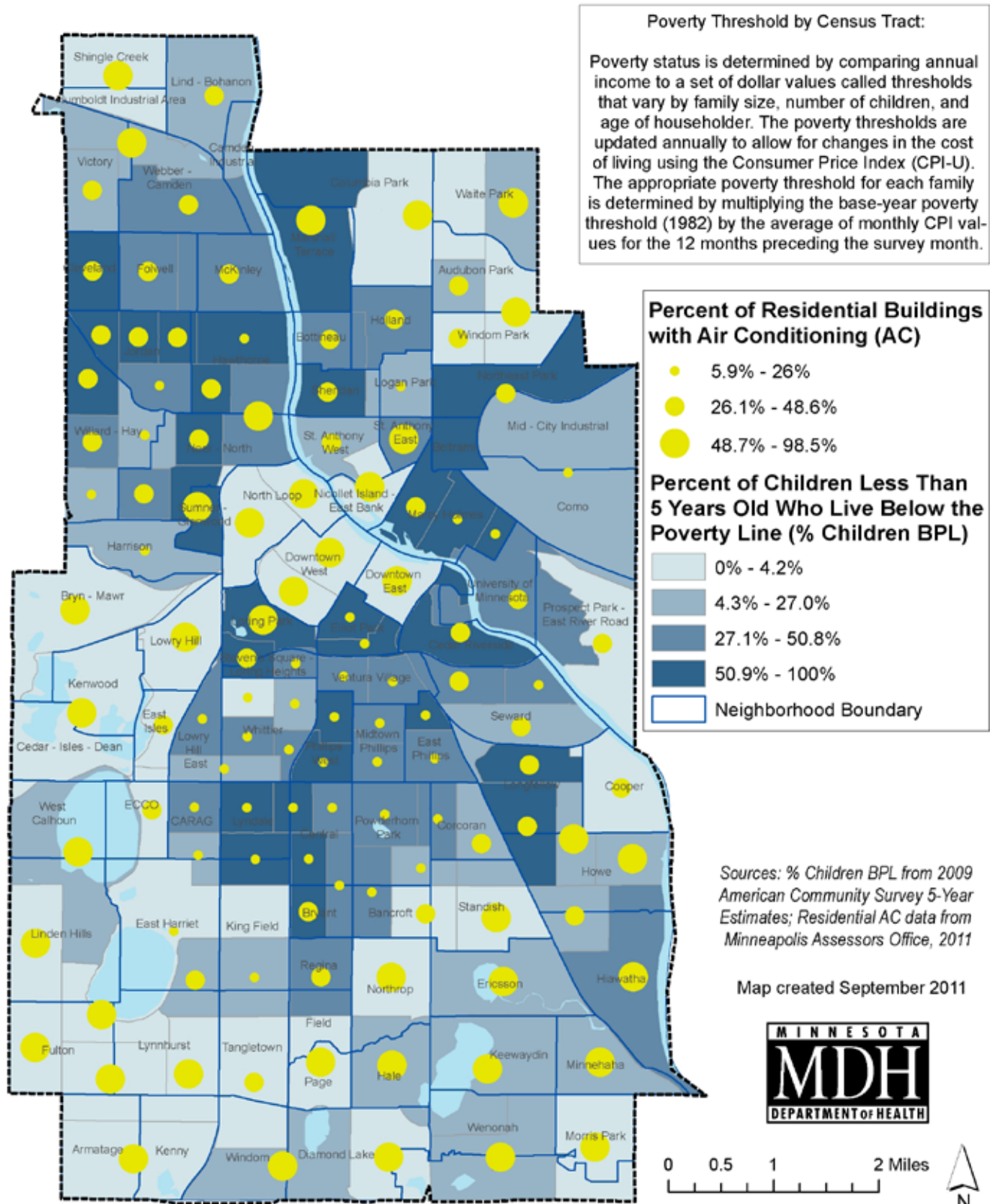
Air Conditioned Residential Buildings & Percent of Elderly People Who Live Alone in Minneapolis



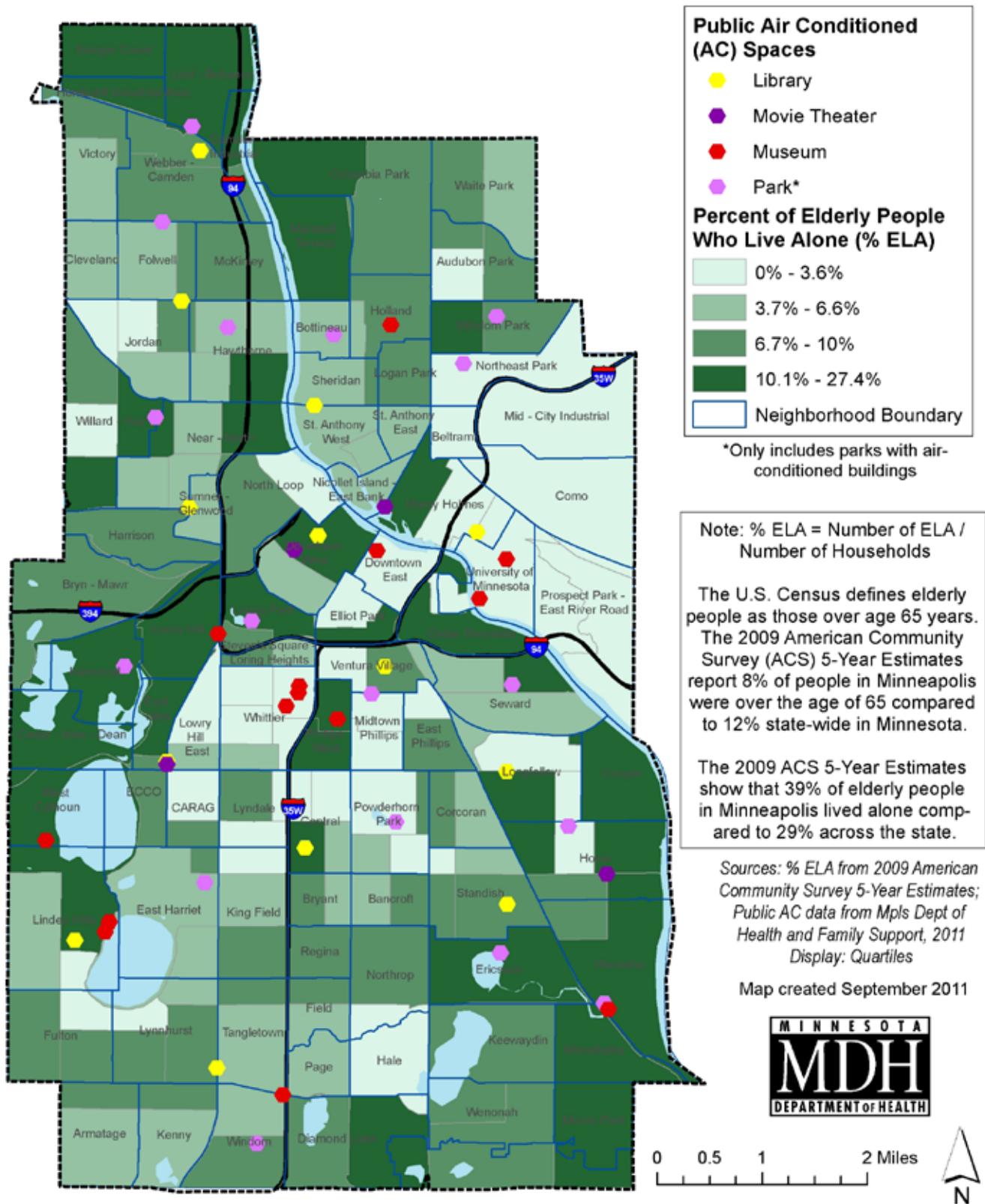
Air Conditioned Residential Buildings & Percent of People Who Live Below the Poverty Line



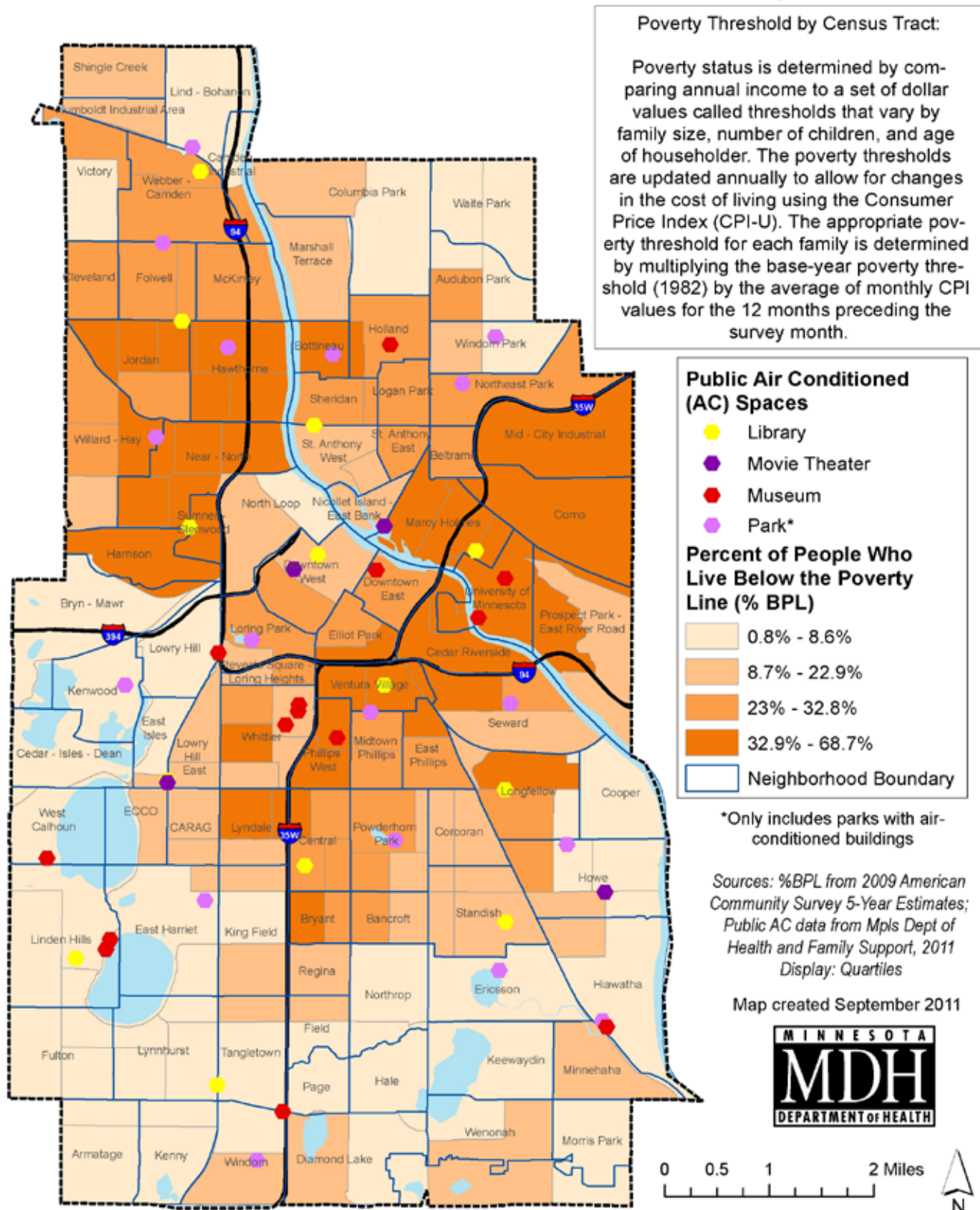
Air Conditioned Residential Buildings & Percent of Children Less Than 5 Years Old Who Live Below the Poverty Line



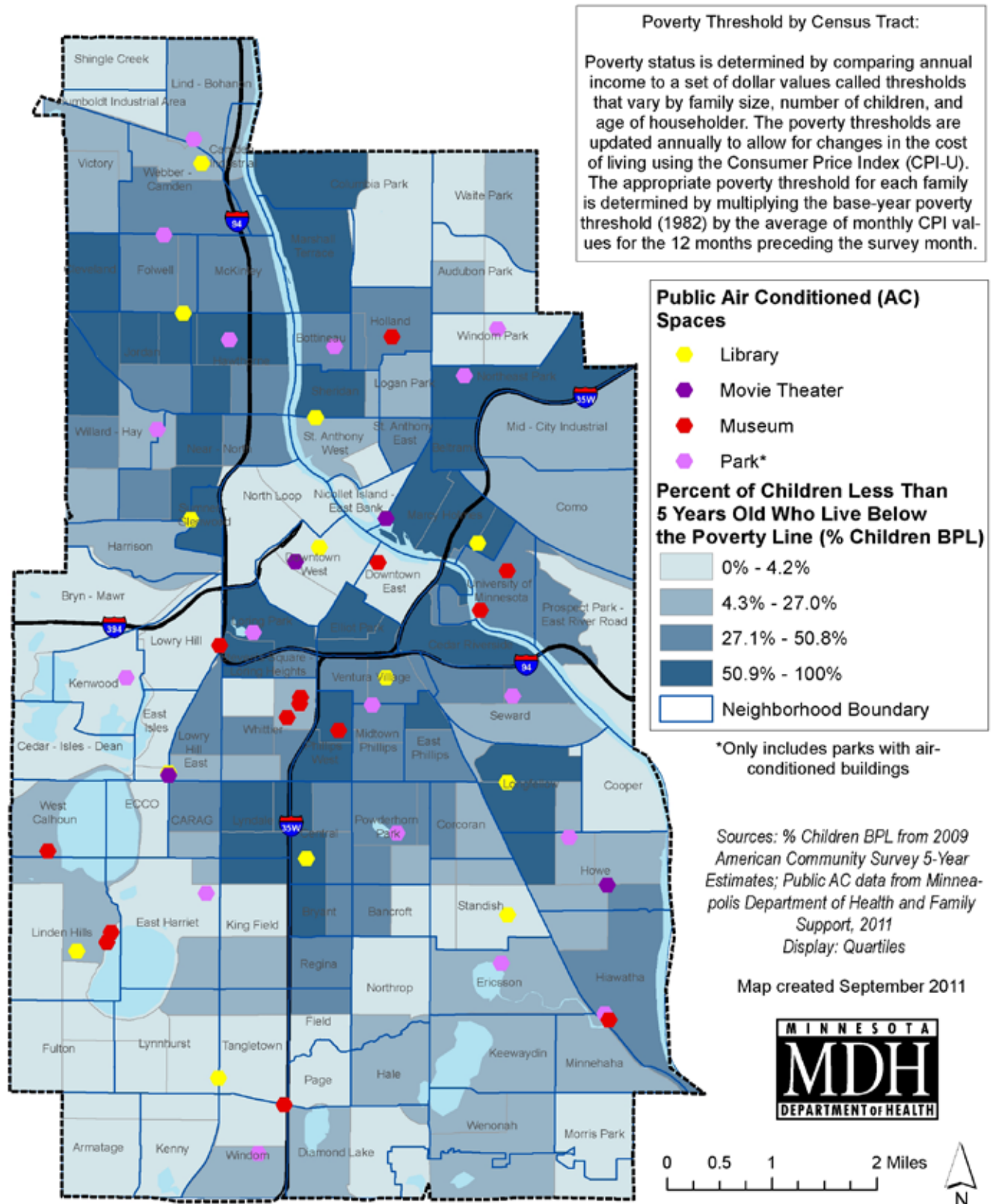
Public Air Conditioned Spaces & Percent of Elderly People Who Live Alone in Minneapolis



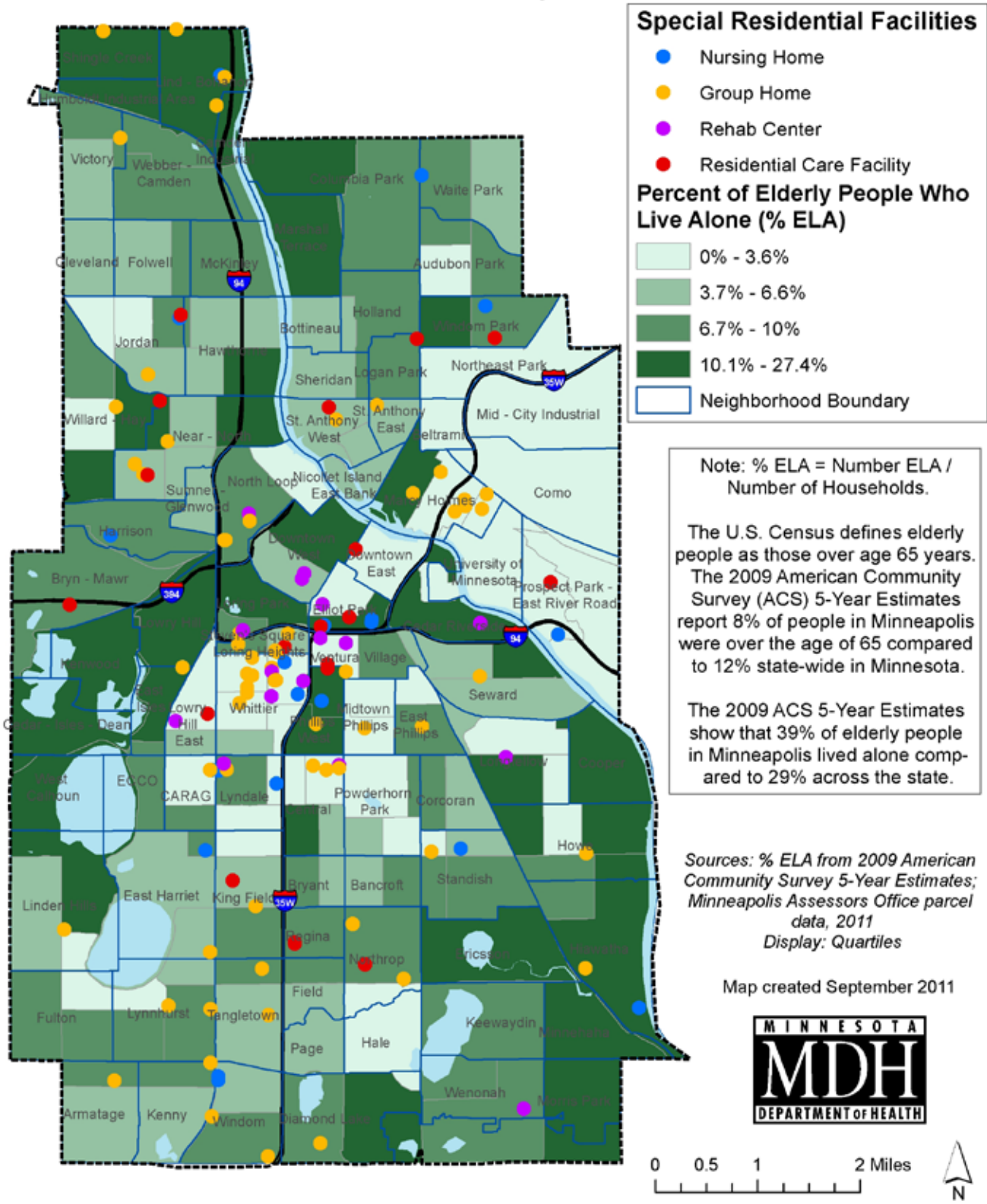
Public Air Conditioned Spaces & Percent of People Who Live Below the Poverty Line



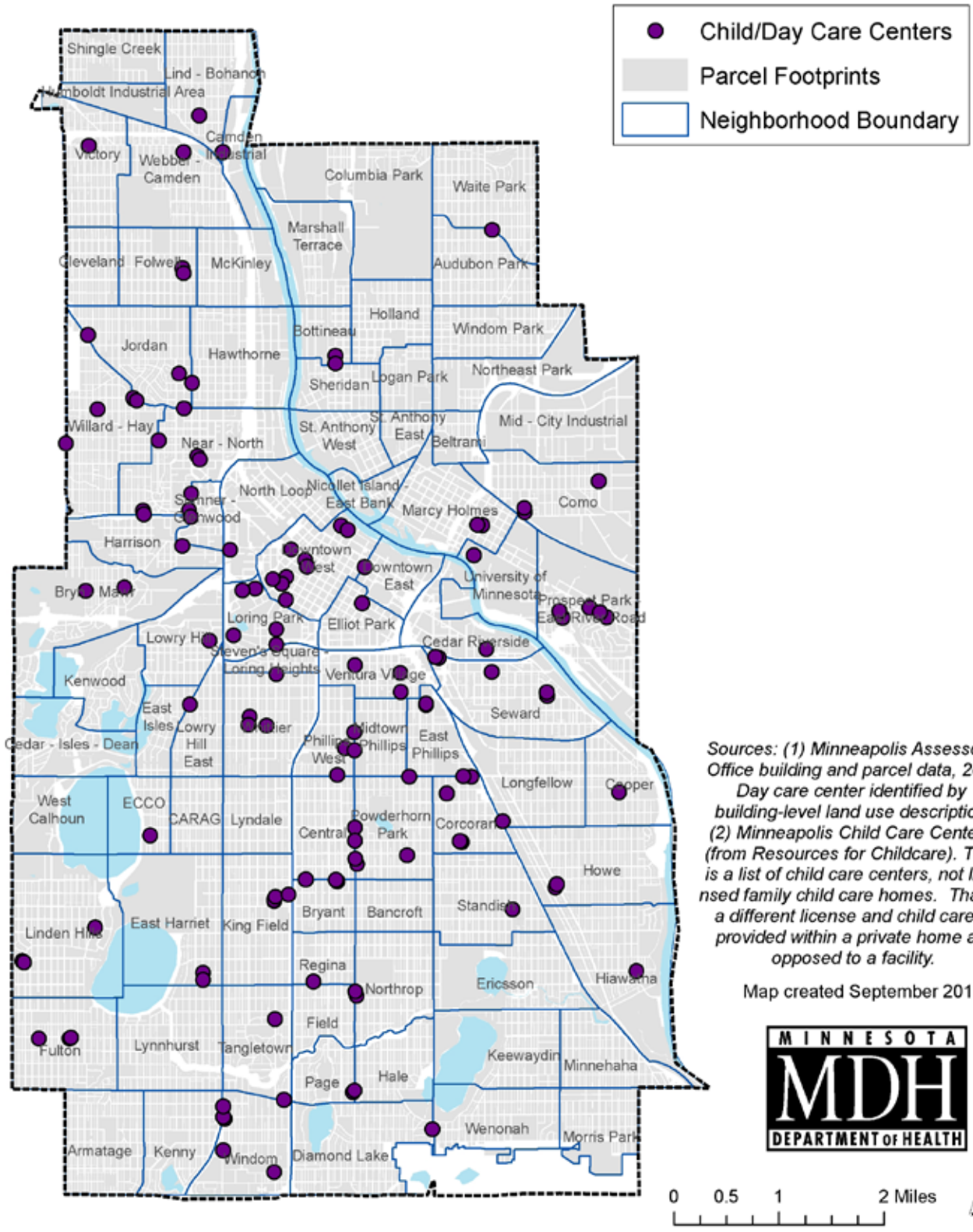
Public Air Conditioned Spaces & Percent of Children Less Than 5 Years Old Who Live Below the Poverty Line



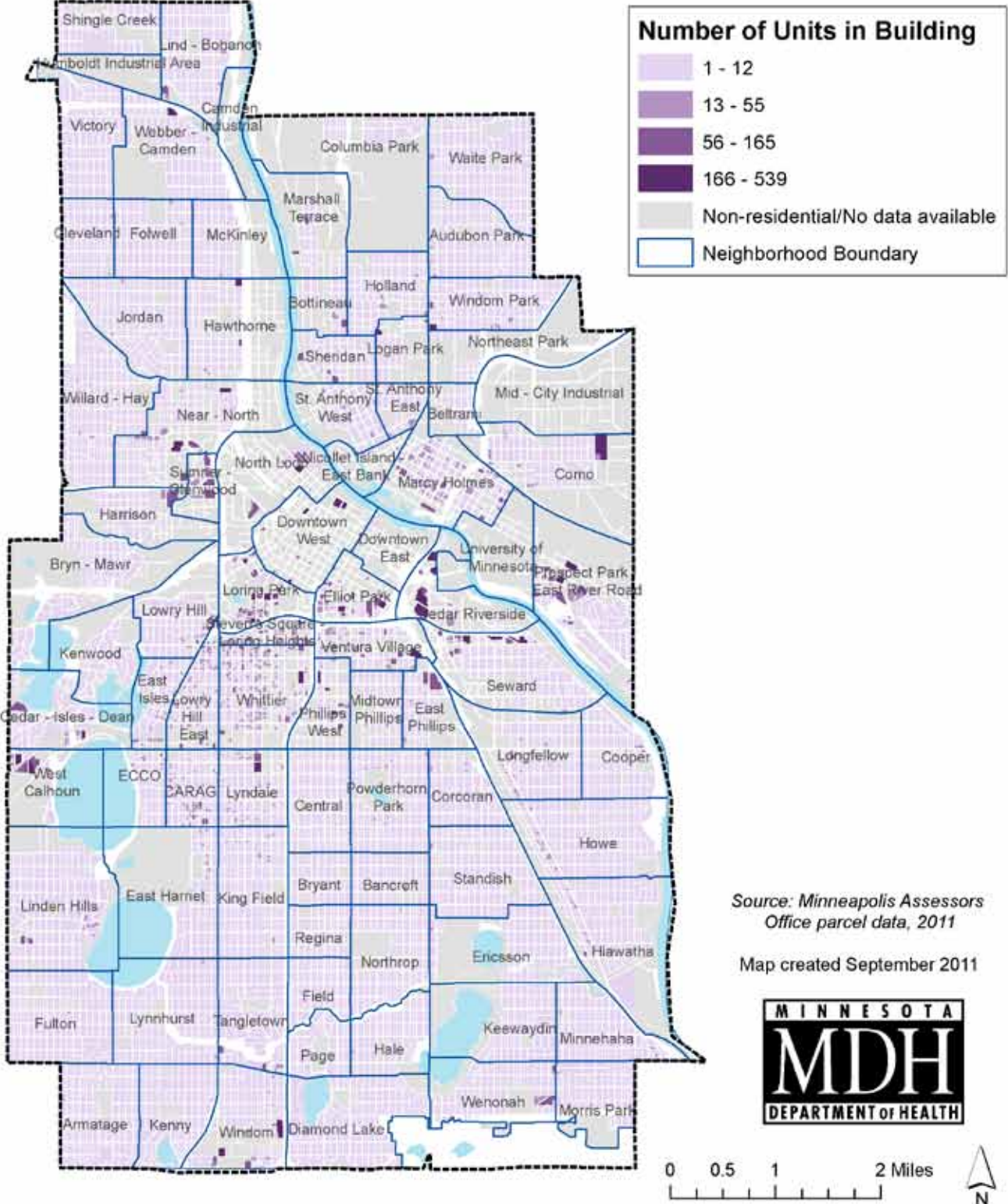
Special Residential Facilities & Percent of Elderly People Who Live Alone in Minneapolis



Child/Day Care Centers



Mutli-Unit Residential Buildings (as proxy for buildings with top-floor tenants at-risk for heat-related illnesses)



Minneapolis Land Cover Impervious Surfaces

