

Nemadji River Watershed (NRW)

Groundwater Restoration and Protection Strategies Report



March 2020

GRAPS Report #15



Nemadji River Watershed Groundwater Restoration and Protection Strategies Report

Minnesota Department of Health
Source Water Protection Unit
PO Box 64975,
St. Paul, MN 55164-0975
(651) 201-4695
carrie.raber@state.mn.us
www.health.state.mn.us

Upon request, this material will be made available in an alternative format such as large print, Braille, or audio recording. Printed on recycled paper.



The development of the GRAPS report was funded by money received from the Clean Water Fund through the Clean Water, Land, and Legacy Amendment. The goal of the Clean Water Fund is to protect, enhance, and restore Minnesota's lakes, rivers, streams, and groundwater.

Contributors

The following agencies dedicated staff time and resources toward the development of the Nemadji River Watershed GRAPS report:

- Minnesota Board of Water and Soil Resources (BWSR)
- Minnesota Department of Agriculture (MDA)
- Minnesota Department of Health (MDH)
- Minnesota Department of Natural Resources (DNR)
- Minnesota Pollution Control Agency (MPCA)

Photo Credit: The photo on the front page is the Nemadji River Watershed, courtesy of the MPCA.

Summary

Groundwater is an important resource in the Nemadji River Watershed (NRW) One Watershed One Plan (1W1P) planning effort¹. Groundwater accounted for 100 percent of reported water use in 2017 used for agricultural irrigation. Additionally, groundwater accounts for 100 percent of the region's drinking water. It is important to ensure adequate supplies of high quality groundwater remain available for the region's residents, businesses, and natural resources.

The NRW depends on buried sand and gravel aquifers for drinking water in the northern part of the watershed, relying less on low permeability bedrock and surficial sand and gravel aquifers. As you move further south, the bedrock sandstone aquifer becomes the primary aquifer for drinking water wells.

Groundwater has a greater risk to contamination in areas of high pollution sensitivity and karst geology². Pollution sensitivity is highly variable throughout the watershed. The near-surface geology ranges from karst features to impermeable clay layers. Areas of higher pollution sensitivity generally indicate more permeable glacial outwash at the land surface. A large band of high pollution sensitivity (permeable glacial outwash) is present in the northern part of the watershed, along with another pocket in the southern portion of the watershed. Karst-like features exist in northern Pine County and southeastern Carlton County. Understanding pollution sensitivity is a key consideration to prevent groundwater pollution. Many land-use activities (including row crop agriculture, stormwater, septic systems, and tanks/landfills) within the watershed could contaminate groundwater if pollutants are not carefully managed, especially in areas of high pollution sensitivity and karst geology.

Contamination, both naturally occurring and from human activity, is present in parts of the watershed groundwater, specifically:

- **Nitrate** – none of the tested drinking water wells had levels at or above the SDWA standard of 10 mg/L.
 - There are no MDA ambient monitoring wells in the watershed.
 - There are no MDA Township Testing Program (TTP) areas in the NRW.
- **Arsenic** – nearly six percent of the 17 tested wells had levels exceeding the Safe Drinking Water Act (SDWA) of 10 µg/L. The EPA has set a goal of 0 µg/L for arsenic in drinking water because there is no safe level of arsenic in drinking water.
- **Pesticides** – there are no MDA ambient monitoring wells in the NRW.
- **Contaminated sites** – there are seven active tank sites that could leak chemicals into the environment if not properly managed. The risk to groundwater is greatest in areas of high pollution sensitivity and karst geology.

These contaminants can affect both private wells and public water systems when levels exceed drinking water standards. One hundred percent of the people living in the watershed get their drinking water from private wells. There are 743 private drinking water wells with known locations ranging from 16 ft. to 591 ft. deep.

¹ For this report, the boundary of the NRW is limited to areas within Minnesota excluding the portion in Wisconsin to match the 1W1P planning boundaries.

² Areas of high pollution sensitivity allow the rapid downward movement of water into surficial sands (water table) aquifers, increasing the risk for groundwater contamination from surface pollutants. Karst is considered to be very highly sensitive to pollution.

There is one active groundwater-level monitoring well in the NRW. This surficial sand (water table) well has been measured since the 1970s and had no trend.

Activities on the land surface can affect groundwater levels by reducing infiltration (groundwater recharge) especially in the northeastern portion of the watershed; these activities include tiling, changes in vegetation, increased areas of impervious surface, and changing surface water or stormwater flow.

The NRW includes significant natural features, including surface waters that depend on groundwater to sustain them. If groundwater quantity or quality is degraded, these resources are at risk. The following features occur within the watershed:

- Eleven lakes in the NRW have a watershed to lake area ratio of 10 or less and are considered a groundwater-dominated lake.

To address risks both from groundwater overuse and from the introduction of pollutants, this report outlines a broad range of strategies that can be implemented, as well as specific actions that individuals, local government, and other partners can take. The nine categories of strategies highlighted below were selected to address the key risks to groundwater and drinking water within the 1W1P planning area. Areas of higher pollution sensitivity and karst geology are often an appropriate place to prioritize pollution prevention activities.

1. **Education and Outreach:** Educate landowners, private well users, and others about how their actions affect groundwater and how they can conserve, restore, and protect groundwater.
2. **SSTS Management:** Monitor, maintain, and/or upgrade SSTS to ensure proper operation and treatment.
3. **Irrigation Water Management:** Control the volume, frequency, and application rate of irrigation water to sustain groundwater.
4. **Land Use Planning and Management:** Use city or county government planning and regulations along with land management goals that implement best management practices (BMPs), conserve water, and educate stakeholders to protect groundwater levels, quality, and contributions to groundwater dependent features.
5. **Contaminant Planning and Management:** Use land use planning, ordinances, and collaboration with state regulatory agencies to protect groundwater and drinking water supplies from contaminant releases.
6. **Conservation Easements:** Maintain and expand the amount of land protected from being converted to high intensity uses, such as row crop agriculture.
7. **Cropland Management:** Encourage the implementation of voluntary practices to manage resource concerns while minimizing environmental loss.
8. **Nutrient Management:** Assure that application of crop fertilizer or manure follows guidelines for the right source, right rate, right time, and right place.
9. **Integrated Pest Management:** Implement a pest management approach that incorporates the many aspects of plant health care/crop protection in ways that mitigate harmful environmental impacts and protect human health.

This GRAPS report was designed to help prioritize and target local efforts to restore and protect groundwater resources in the watershed. Representatives from BWSR, MDA, MDH, DNR, and MPCA compiled existing state and regional data, and developed maps to establish a baseline understanding of groundwater conditions and associated resource management concerns for the 1W1P planning boundary. The team highlighted strategies and supporting actions that can be applied at a county or watershed-level to help restore and protect groundwater. To target local implementation, actions listed in this report are paired with those counties and subwatersheds (HUC-10) where risks have been identified. This report should be used in conjunction with the WRAPS report, which focuses on surface

water issues and needs, to ensure that both groundwater and surface water are effectively addressed during the 1W1P planning process.³

³ It is important to note that groundwater science lacks the predictive tools available for surface water analysis and as such cannot provide quantifiable strategies commonly found in WRAPS. BWSR recognizes this challenge and has provided guidance in the [Setting Measurable Goals document](http://www.bwsr.state.mn.us/planning/1W1P/Setting_Measurable_Goals.pdf) (www.bwsr.state.mn.us/planning/1W1P/Setting_Measurable_Goals.pdf) to meet the 1W1P measurability requirement.

Contents

Nemadji River Watershed (NRW).....	1
Groundwater Restoration and Protection Strategies Report.....	1
Summary.....	3
Contents	6
Figures.....	7
Tables	8
Introduction	9
What Is the GRAPS Report?.....	9
How to Use this Report	10
Nemadji River Watershed Overview	11
Land Use.....	12
Geology and Hydrogeology	12
Pollution Sensitivity	13
Wellhead Protection Planning and Drinking Water Supply Management Areas	18
Private Wells.....	19
Extreme Weather	20
Nemadji River Watershed Groundwater Issues and Concerns	21
Groundwater Quality Issues and Concerns	21
Nitrate.....	22
Pesticides	24
Arsenic	25
Radionuclides.....	26
Ambient Groundwater Monitoring	27
Potential Contaminant Sources	28
Groundwater Quantity Issues and Concerns.....	34
Groundwater Use.....	34
Groundwater Level Monitoring.....	37
Groundwater Connected Natural Features at Risk	40
How to Address Groundwater Quantity Issues.....	41
Nemadji River Watershed Strategies and Actions to Restore and Protect Groundwater.....	42
Tips for Prioritizing and Targeting Strategies and Actions	42
Strategies and Actions for Nemadji River Watershed	43
How to Use the Table of Actions and Strategies	44

Summary of Key Findings and Issues	46
Table of Actions and Strategies to Restore and Protect Groundwater	47
Descriptions of Supporting Strategies	61
Making Sense of the Regulatory Environment	68
Appendices	71
List of Acronyms	71
Glossary of Key Terms	72
Dataset Sources.....	74
Additional Resources.....	75

Figures

Figure 1: Watershed Approach Framework	9
Figure 2: Nemadji River Watershed - is comprised of four subwatersheds (HUC-10)	11
Figure 3: Nemadji River Watershed - Land Cover..	12
Figure 4: Nemadji River Watershed – Primary Regional Aquifers.....	13
Figure 5: Nemadji River Watershed - Pollution Sensitivity of Near Surface Materials	15
Figure 6: Recharge Travel Time for Near-Surface Materials	15
Figure 7: Nemadji River Watershed - Pollution Sensitivity of Wells.....	16
Figure 8: Recharge Travel Time for Buried Aquifers.....	16
Figure 9: Nemadji River Watershed – Drinking Water Supply Management Areas.....	19
Figure 10: Nemadji River Watershed - Density of drinking water wells per section.....	20
Figure 11: Nemadji River Watershed – Drinking water wells and flood zone risk to contamination.	21
Figure 12: Nemadji River Watershed - Nitrate Results and Pollution Sensitivity of Near Surface Materials	23
Figure 13: Nemadji River Watershed - Arsenic Results.....	26
Figure 14: Nemadji River Watershed - MPCA Ambient Groundwater Monitoring Well Network.....	28
Figure 15: Nemadji River Watershed – Active Feedlots.....	30
Figure 16: Nemadji River Watershed - MPCA Active Tank Sites and Pollution Sensitivity of Near-Surface Materials.....	32
Figure 17: Reported water use from DNR permit holders by resource category..	34
Figure 18: Reported groundwater use from DNR permit holders by aquifer category.	35
Figure 19: Reported groundwater use from DNR permit holders by use category.	35
Figure 20: Nemadji River Watershed - Distribution of groundwater appropriation permits for 2017 by volume reported and use category.	37
Figure 21: Nemadji River Watershed – Active Groundwater-Level Monitoring Wells in the watershed by decade monitoring started.....	38

Figure 22: Location of active groundwater-level monitoring wells with enough data to calculate a statistical trend..... 39

Figure 23: Hydrograph of groundwater-level monitoring well 09030. 40

Figure 24: Groundwater-Dominated Lakes in the Nemadji River Watershed.. 41

Figure 25: Visual representation of the relationship between goals, supporting strategies, and recommended groundwater action. 44

Figure 26: Minnesota State Agency Roles in Groundwater..... 68

Figure 27: Roles agencies play within the Minnesota Water Management Framework..... 70

Figure 28: Sensitivity Assessment and Calculation for Pollution Sensitivity of Wells (Figure 9)..... 77

Figure 29: Sensitivity Assessment and Calculation for Pollution Sensitivity of Wells (Figure 9) continue... 78

Tables

Table 1: Sensitivity rating and the associated recharge travel times for surficial and buried aquifer..... 17

Table 2: Summary of nitrate results in drinking water wells of the Nemadji River Watershed..... 22

Table 3: Nitrate protection framework and associated land use management goals. 24

Table 4: Summary of arsenic (As) concentrations in wells of the Nemadji River Watershed..... 25

Table 5: Number of registered feedlots and the delegated counties 29

Table 6: Reported number of failing SSTS in each county within the Nemadji River Watershed..... 31

Table 7 : Reported 2017 water use from DNR groundwater permit holders in million gallons per year. ... 36

Table 8: HUC 10 subwatersheds within the Nemadji River Watershed 45

Table 9: Actions and Strategies to Restore and Protect Groundwater 47

Introduction

What Is the GRAPS Report?

The State of Minnesota adopted a watershed approach to address the state’s 80 major watersheds⁴. Major watersheds are denoted by an 8-digit hydrologic unit code (HUC). This watershed approach incorporates water quality assessment, watershed analysis, civic engagement, planning, implementation, and measurement of results into a 10-year cycle that addresses both watershed restoration and protection (Figure 1).



Figure 1: Watershed Approach Framework

Groundwater Restoration and Protection Strategies (GRAPS) reports are designed to help prioritize and target local efforts to restore and protect groundwater resources in the One Watershed One Plan (1W1P) planning process. While groundwater is not broken into watersheds like surface water, several state agencies have worked together to compile information and strategies for groundwater below surface water watersheds. A GRAPS report uses existing state data and information about groundwater and land-use practices that affect groundwater in the watershed to identify key groundwater quality and quantity concerns. The report also suggests targeted strategies and actions to restore and protect groundwater. GRAPS reports are meant to be used in conjunction with Watershed Restoration and Protection Strategies (WRAPS) reports in the development of 1W1P plans. WRAPS inform how to restore and protect surface water, and GRAPS inform how to restore and protect groundwater in the same geographic area.

WRAPS is initiated through an intensive monitoring effort to determine if a surface water body is meeting its designated use. WRAPS identify actions and the rate of adoption needed to restore water quality, as well as recognizing protection based activities to maintain the health of high quality surface waters. GRAPS is largely protection-based—identifying actions to maintain groundwater quality and quantity.

⁴ You can learn more about the Watershed Approach at Watershed approach to restoring and protecting water quality (<https://www.pca.state.mn.us/water/watershed-approach-restoring-and-protecting-water-quality>).

However, if contaminants exist or overuse is suspected, the strategies and actions identified to address the issue can result in restoration as well as protection. In most cases it is very difficult to determine the rate of BMP adoption needed to restore groundwater, therefore quantification is not part of GRAPS.

How to Use this Report

This report is a resource and tool for developing local water management plans. The report is divided into six parts to accommodate the different needs and information partners and agencies may seek. This report is not necessarily designed to be read cover to cover. Rather, you can flip to the parts that are most relevant to the issues facing your community. If you are accessing this document electronically, you can click on hyperlinks throughout the report to jump to related information and/or access webpages (all hyperlinks are in blue type).

The report is divided into the following parts:

1. [Watershed Overview](#): This section provides a brief overview of the watershed.
2. [Watershed Groundwater Issues and Concerns](#): This section highlights the main groundwater quality and quantity concerns, where each concern is most prevalent within the watershed, and general ways to address the concern.
3. [Watershed Strategies and Actions to Protect and Restore Groundwater](#): This section provides tips for prioritizing and targeting restoration and protection strategies, makes suggestions about what strategies and actions would be most appropriate in which counties and subwatersheds, describes the suggested strategies, and provides information about existing programs and resources for each strategy.
4. [Making Sense of the Regulatory Environment](#): This section provides an overview of the roles state agencies play in managing groundwater and drinking water.
5. [Appendices](#)

Nemadji River Watershed Overview

This report provides a brief overview of land use, geology, hydrogeology, pollution sensitivity, wellhead protection planning and drinking water, and water use and groundwater withdrawals affecting the Nemadji River Watershed (NRW) 1W1P planning boundary groundwater quality and quantity. You can find more detailed information about the NRW and groundwater through the following resources:

Restoration and Protection Plans

- MPCA [Nemadji Watershed Reports](https://www.pca.state.mn.us/water/watersheds/nemadji-river) (https://www.pca.state.mn.us/water/watersheds/nemadji-river)

The Nemadji River Watershed 1W1P planning boundary covers 276 square miles in northeastern Minnesota and is located within the Lake Superior basin. The majority of the watershed is within eastern Carlton County and northeastern Pine County ([Figure 2](#)). There are a limited number of municipalities in this rural watershed. Blackhoof is the largest community with 893 people, followed by Atkinson with 406 people. The NRW has seen a population increase of more than 600 people between 2000 and 2010.

Of the roughly 3,890 people living in the watershed, 100 percent obtain their drinking water from private wells.

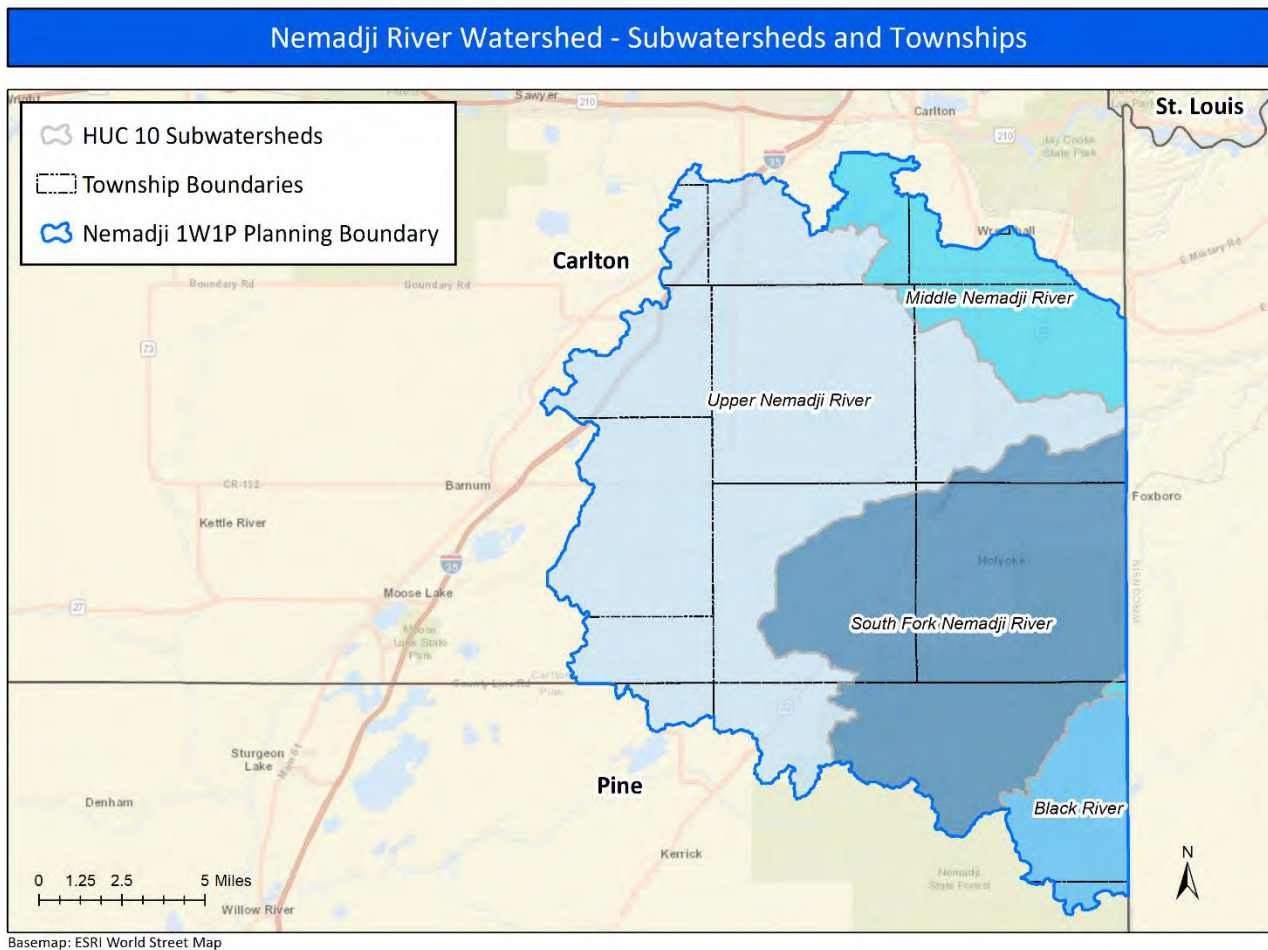


Figure 2: Nemadji River Watershed - is comprised of four subwatersheds (HUC-10)

Land Use

The NRW has more than 80 percent of forest and wetlands that support timber production, hunting, fishing, hiking and other recreational opportunities. Large tracks of public land exist in the watershed, including county land, state forests, wildlife management areas and other public lands ([Figure 3](#)).

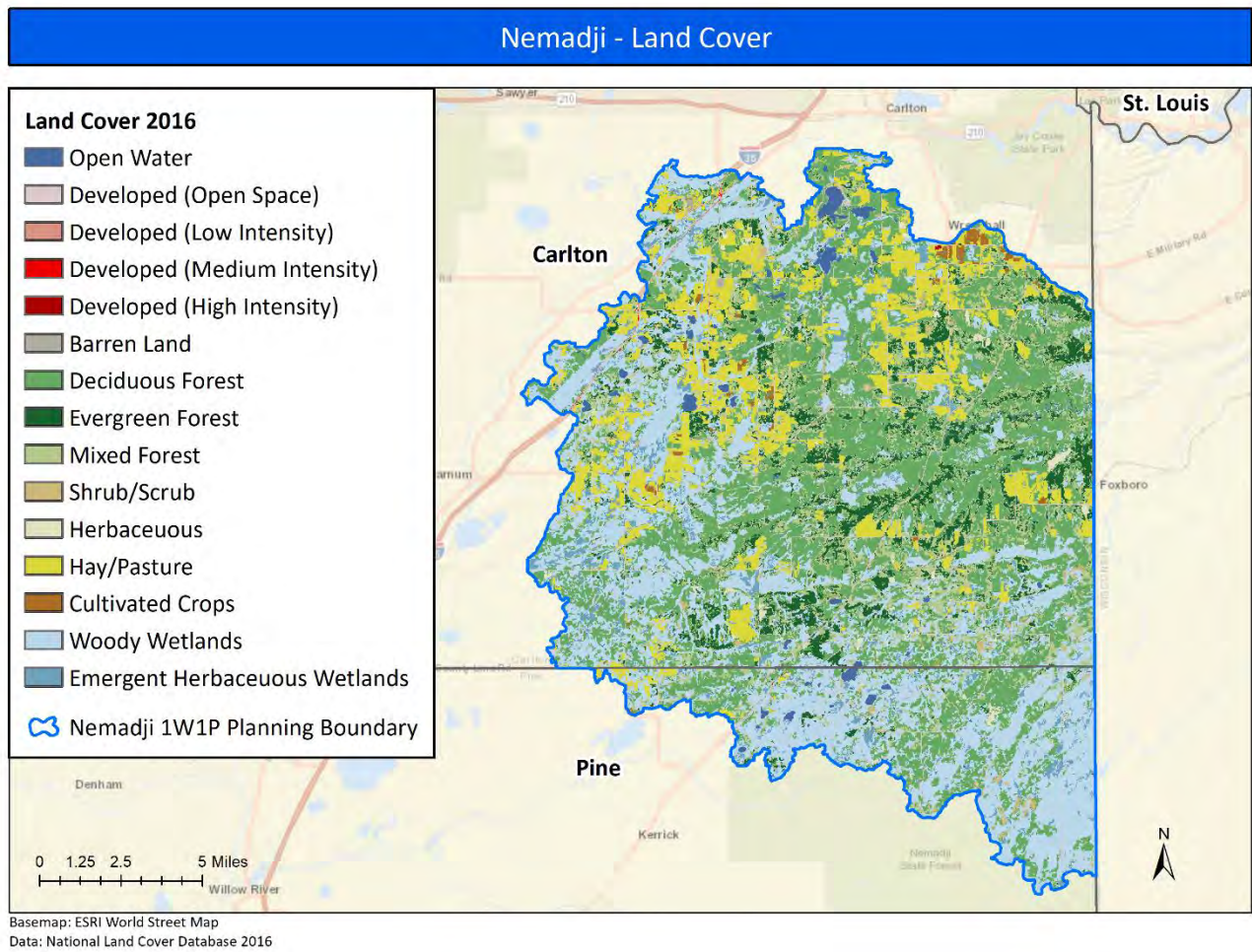


Figure 3: Nemadji River Watershed - Land Cover. Forests account for more than 40 percent of land cover in the watershed.

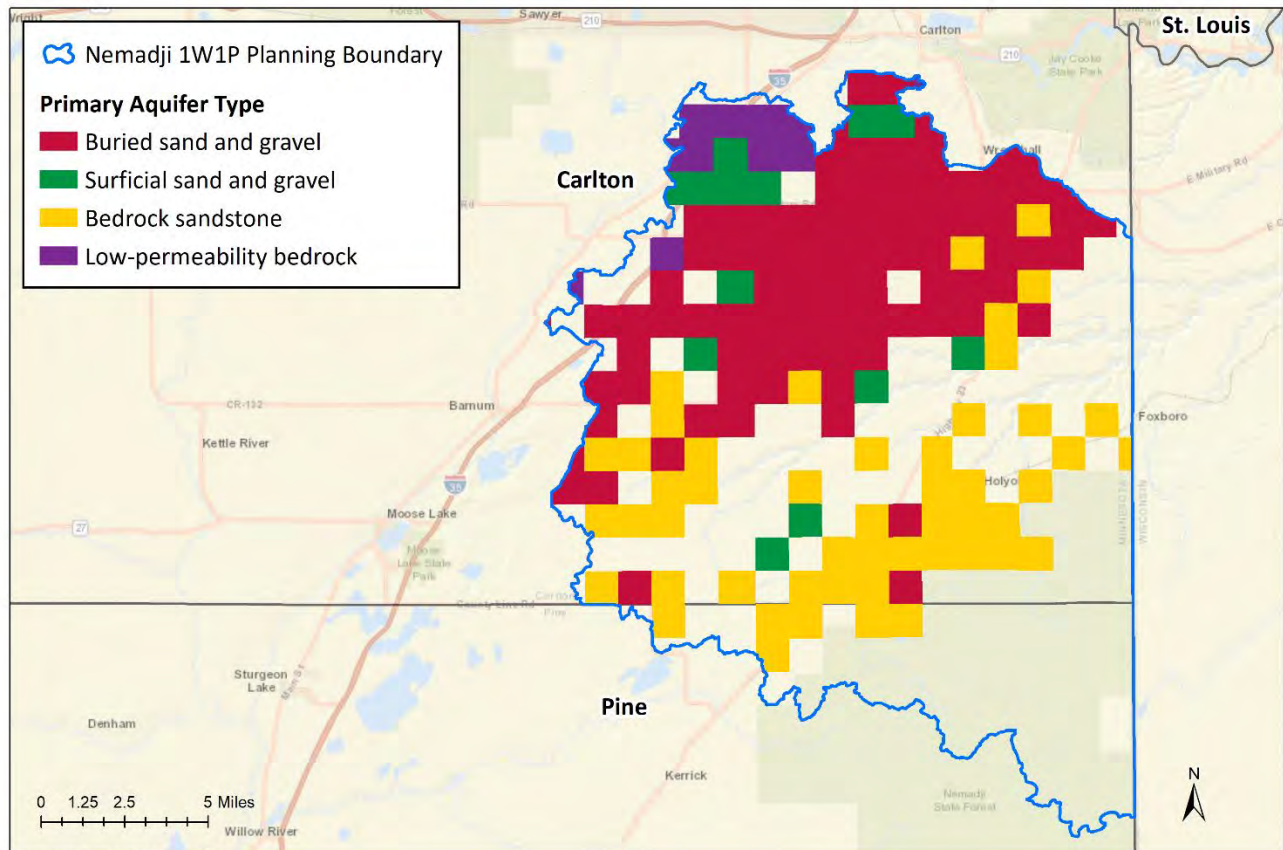
Geology and Hydrogeology

Groundwater sources within the NRW vary according to the underlying geology. The geology in the NRW is the result of metamorphic, sedimentary, and glacial processes that took place in the region over more than one billion years. [Figure 4](#) depicts a generalized map of aquifers in the watershed.

There are several main types of aquifers in the watershed ([Figure 4](#)):

- Buried sand and gravel aquifers of glacial origin. These are the primary water source within the NRW—approximately 60% of all drinking water wells draw from these aquifers.
- Bedrock sandstone aquifers in the Hinckley Sandstone and Fond du Lac Formation. These aquifers supply water to about 20% of the drinking water wells within the watershed.
- Surficial sand and gravel aquifers of glacial origin. About 10% of drinking water wells use these aquifers.
- Crystalline bedrock, where groundwater is found locally in faults and fractures. Only about 6% of wells draw from these aquifers.

Nemadji River Watershed - Primary Aquifers by Section



Basemap: ESRI World Street Map
Data: CWI

Figure 4: Nemadji River Watershed – Primary Regional Aquifers. Buried sand and gravel aquifers are the primary drinking water source for the watershed.

Pollution Sensitivity

Understanding pollution sensitivity is important for prioritizing and targeting implementation efforts. Pollution sensitivity (also known as aquifer vulnerability or geologic sensitivity) refers to the time it takes recharge and contaminants at the ground surface to reach the underlying aquifer.

It is important to understand the target aquifer when assessing pollution sensitivity. Certain aquifers may be deeper and more geologically protected than water table aquifers, or surficial sand aquifers, in a given area. [Figure 5](#) depicts the pollution sensitivity of near-surface materials dataset developed by the DNR. This dataset only takes into account the top ten feet of soil and geologic material when assigning a sensitivity rating. This figure shows that the pollution sensitivity is highly variable throughout the NRW, since the near-surface geology ranges from karst features to impermeable clay layers. The large area of “ultra low” sensitivity in the northeast portion of the NRW reflects fine-grained glacial lake sediments (clay and silt) at the surface, while other areas of relatively low vulnerability mainly reflect glacial tills. Areas of higher vulnerability generally indicate more permeable glacial outwash at the land surface. Karst-like features exist in northern Pine County and southeastern Carlton County, where the Hinckley Sandstone is only thinly covered by sandy glacial deposits. More information on this dataset can be found on the DNR website [Minnesota Hydrogeology Atlas \(MHA\)](http://www.dnr.state.mn.us/waters/programs/gw_section/mapping/platesum/mha_ps-ns.html) (http://www.dnr.state.mn.us/waters/programs/gw_section/mapping/platesum/mha_ps-ns.html).

The pollution sensitivity of deeper aquifer materials depicted in [Figure 7](#) was created by calculating the sensitivity at individual wells in the watershed and then interpolating between them to create a smooth layer. The wells used to make this figure vary in depth but overall provide a picture of the geologic sensitivity of aquifers below the water table. This method was employed due to the absence of an available statewide dataset depicting pollution sensitivity, or vulnerability, of aquifers. [Figure 7](#) shows that the groundwater pollution sensitivity rating in the NRW ranges from “low” to “high”. In the central portion of the NRW, where the Hinckley Sandstone and Fond du Lac Formation are covered by thick layers of fine-grained glacial sediment, pollution sensitivity is mostly “low”. Sensitivity ratings are higher in the northwest region of the watershed, where faulted/fractured metamorphic bedrock exists underneath only relatively thin and permeable glacial deposits. In the southeastern portion of the watershed, where broad areas are rated as “moderate” or “undefined, note that the data is scarce due to a lack of wells. More information on the geologic sensitivity calculations used to make this figure is included in the references section of this report as [Figure 28](#) and [Figure 29](#).

It is also important to understand how recharge travel time ratings ([Figure 6](#) and [Figure 8](#)) for surficial water table aquifers differ from those used for deeper aquifers ([Table 1](#)). For example, a pollution sensitivity rating of ‘moderate’ for surficial materials reflects vertical travel times on the order of weeks ([Figure 5](#)); whereas, for deeper aquifers more commonly used for drinking water, a rating of ‘moderate’ reflects travel times of years to decades ([Figure 8](#)). This difference stems from the fact that infiltrating water and contaminants reach surficial materials more quickly than deeper aquifers. Deeper aquifers often have protective clay layers that make travel time significantly longer. As noted above, this distinction is important when determining the potential impact of various contaminants on surficial materials and drinking water aquifers.

Nemadji - Pollution Sensitivity of Near-Surface Materials

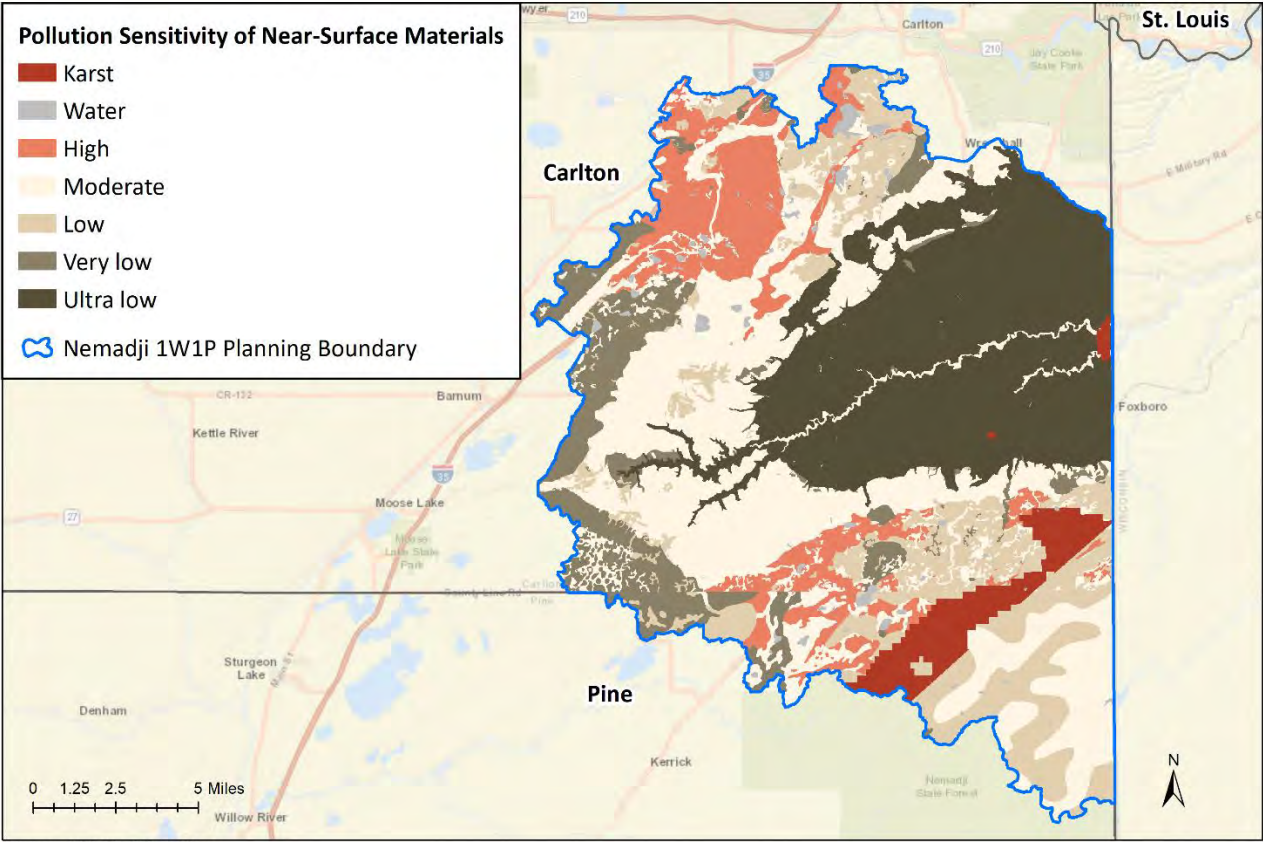


Figure 5: Nemadji River Watershed - Pollution Sensitivity of Near Surface Materials

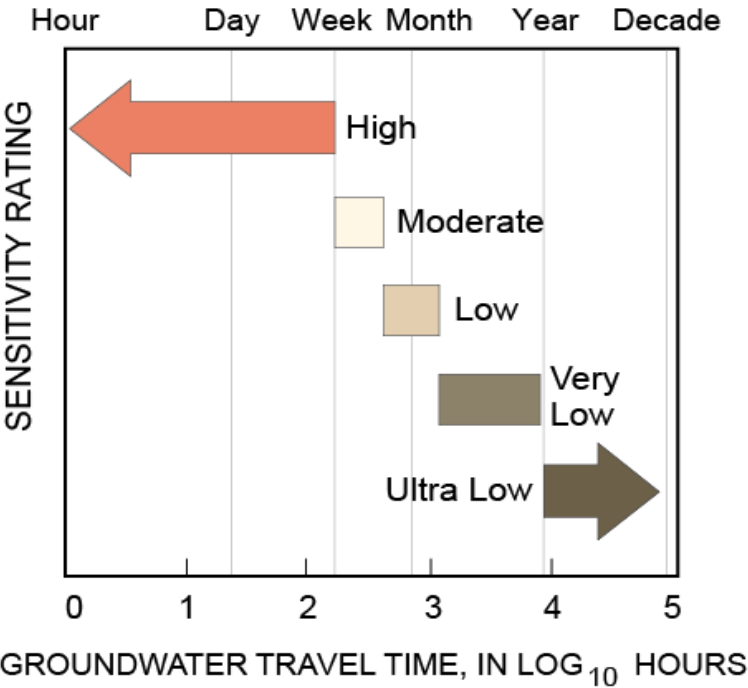


Figure 6: Recharge Travel Time for Near-Surface Materials

Table 1: Sensitivity rating and the associated recharge travel times for surficial and buried aquifer

Pollution Sensitivity Rating	Aquifer Recharge Time Period ⁵ for Surficial Aquifers	Aquifer Recharge Time Period for Buried Aquifers
High	Hours to a week	Days to months
Moderate	A week to weeks	Years up to one or two decades
Low	Weeks to a year	Several decades to a century

⁵ Aquifer recharge time periods refer to the time it takes aquifers to receive recharge from the land surface. Aquifer recharge rate informed by the Geologic Sensitivity Project Workgroup, 1991.

Wellhead Protection Planning and Drinking Water Supply Management Areas

Wellhead protection (WHP), planning is the process whereby public water systems examine land uses in the recharge area for their wells and develop strategies for land use management. The strategies are based on vulnerability and are appropriate for safeguarding drinking water supplies. Community public water supplies⁶, including municipal and nonmunicipal systems, are required to prepare Wellhead Protection Plans. As part of this effort, the recharge area that contributes water to the public water supply well(s) is delineated based on physical and chemical characteristics of the aquifer being used. These areas, known as wellhead protection areas (WHPAs), provide an assessment of the aquifer vulnerability (sensitivity) of the public water supply wells. Once the WHPA is established, a Drinking Water Supply Management Area (DWSMA) is created to provide planning boundaries on the land surface in order to manage the groundwater below. Learn more about MDH [Source Water Protection](http://www.health.state.mn.us/divs/eh/water/swp/) (www.health.state.mn.us/divs/eh/water/swp/).

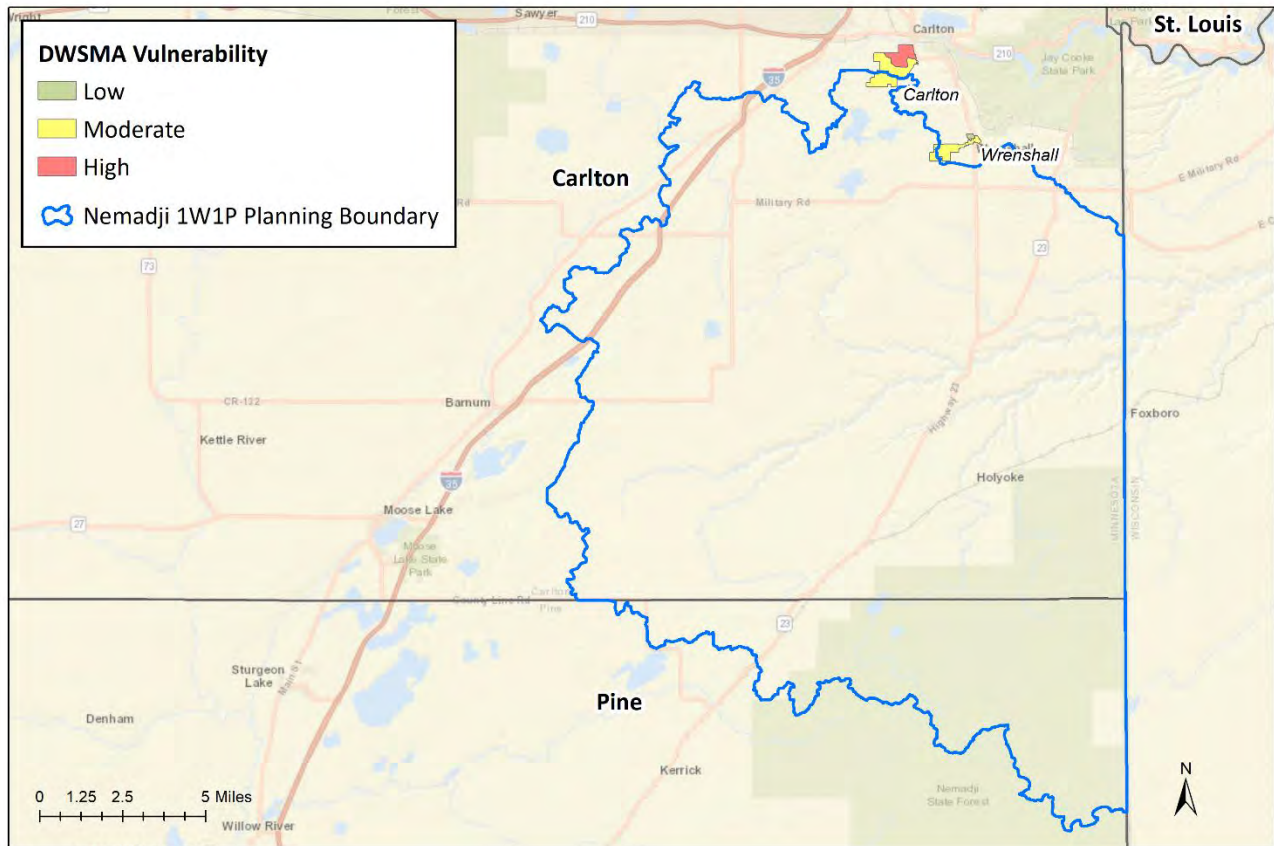
The word ‘sensitivity’ is used to describe groundwater generally throughout the state; ‘vulnerability’ is the term used for wellhead protection planning to protect public sources of drinking water. While there are minor differences between how these words are used as described above, the words are essentially the same for the purposes of planning and management.

Aquifers and wells used for public water supplies vary widely. Some are very shallow and unprotected and can be easily contaminated by activities at the ground surface. Others are deeper or more protected by geologic materials; these tend to exhibit a low vulnerability to overlying land uses. The types of management activities required within WHPAs will vary based largely on the vulnerability assessments. Highly vulnerable WHPAs require a greater level of management to prevent potential contaminants at the ground surface from entering the aquifer. Whereas for WHPAs with low vulnerability the primary focus is on sealing unused/unsealed wells, since this is the primary pathway for contaminants to reach the aquifer.

There are no community water systems within the NRW. The city of Carlton and Wrenshall DWSMAs extend into the Middle Nemadji River subwatershed despite being located in the St. Louis River watershed ([Figure 9](#)).

⁶ Community public water supplies serve at least 25 persons or 15 service connections year-round. Community public water supplies include municipalities (cities), manufactured mobile home parks, etc. Currently there are almost 1,000 community water supplies in Minnesota.

Nemadji River Watershed - DWSMA Vulnerability



Basemap: ESRI World Street Map
Data: MDH

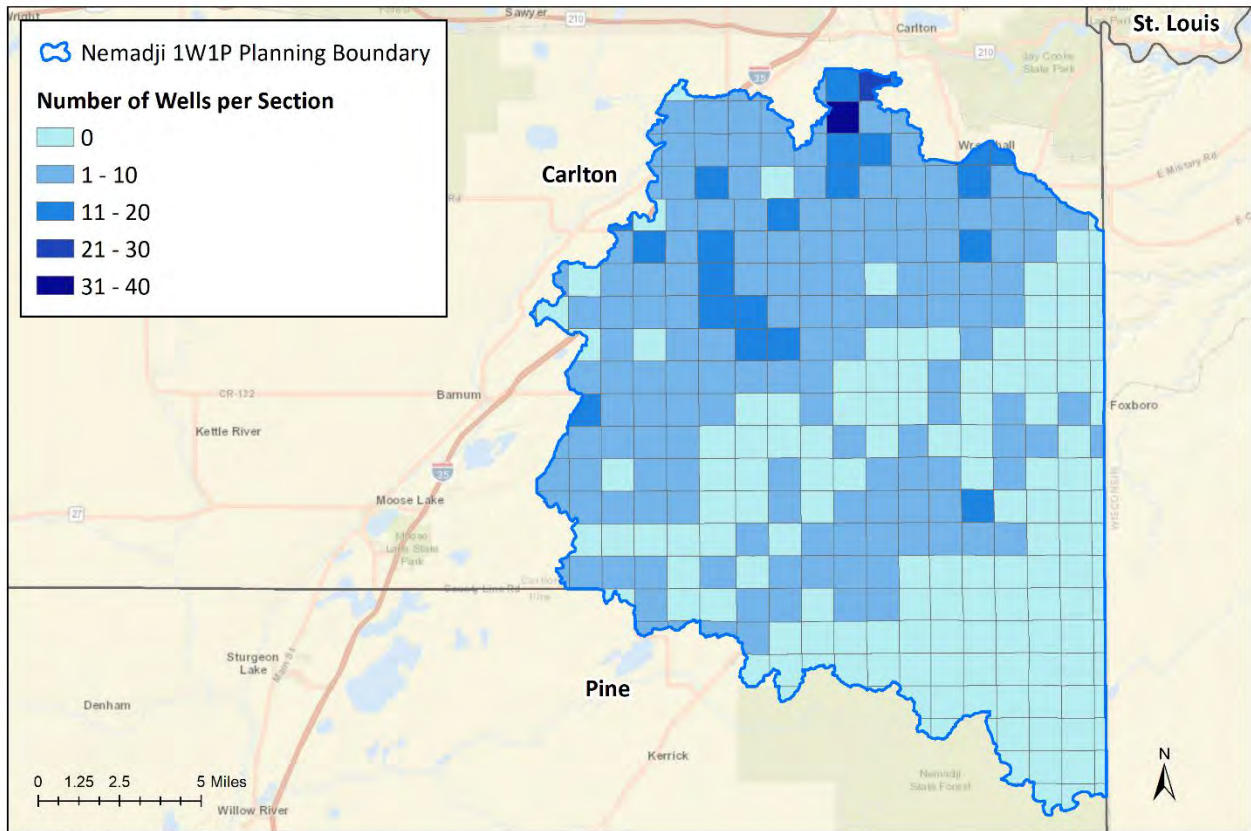
Figure 9: Nemadji River Watershed – Drinking Water Supply Management Areas. There are no Community Public Water Systems within the watershed, however the city of Carlton and Wrenshall DWSMAs extend into the northern part of the watershed.

Private Wells

The NRW has approximately 742 private wells with known locations ranging from 16 feet to 591 feet deep, with an average depth of 168 ft. that provide drinking water to residents. Of the 742 private wells, 133 wells are located in a highly vulnerable setting. Private well users are not afforded the same water quality safeguards as people who get their water from public water systems. While public water systems make sure water is safe for the end-user, private well users are responsible for making sure their water is safe for everyone in the household to drink.

The Minnesota Well Code ensures that private wells are properly located and constructed. However, once the well is put into service, private well users are responsible for properly maintaining their well, testing it regularly, and treating the water when necessary.

Nemadji River Watershed - Drinking Water Wells per Section



Basemap: ESRI World Street Map
Data: CWI

Figure 10: Nemadji River Watershed - Density of drinking water wells per section. There are 742 private wells identified.

[Figure 10](#) illustrates well density and water use data in the NRW. This figure contains a grid that depicts the number of wells in each six by six-mile section of the watershed. Deeper colors correspond to a higher concentration of wells. Well density is variable across the watershed. Only wells used for drinking water were included in this analysis.

Extreme Weather

Climate records show that across Minnesota there has been an increase in average rainfall, as well as heavy precipitation events. As storms become more frequent and intense, flooding will be an ongoing challenge for public water systems and private wells. Flood events can threaten the safety and availability of drinking water by washing pathogens (bacteria, viruses, and parasites) and chemical contamination into source aquifers or by overwhelming the capacity of treatment systems to clean the water. The full extent of floodwater contamination depends on land use and associated infrastructure in the affected area. [Figure 11](#) displays drinking water wells and flood zone risk to contamination in the NRW.

Extreme weather may also affect drought conditions by changing how and where precipitation falls. Increased rainfall over frozen ground and reduced snowpack from spring melt can decrease infiltration into groundwater when converted to runoff. The [Groundwater Quantity Issues and Concerns](#) section of the report assesses aquifer sustainability by evaluating long term monitoring well trends.

For more information on [Climate and Health](#) (www.health.state.mn.us/communities/environment/climate/) or visit the DNR’s webpage [Climate Change and Minnesota](#) (www.dnr.state.mn.us/climate/climate_change_info/index.html).

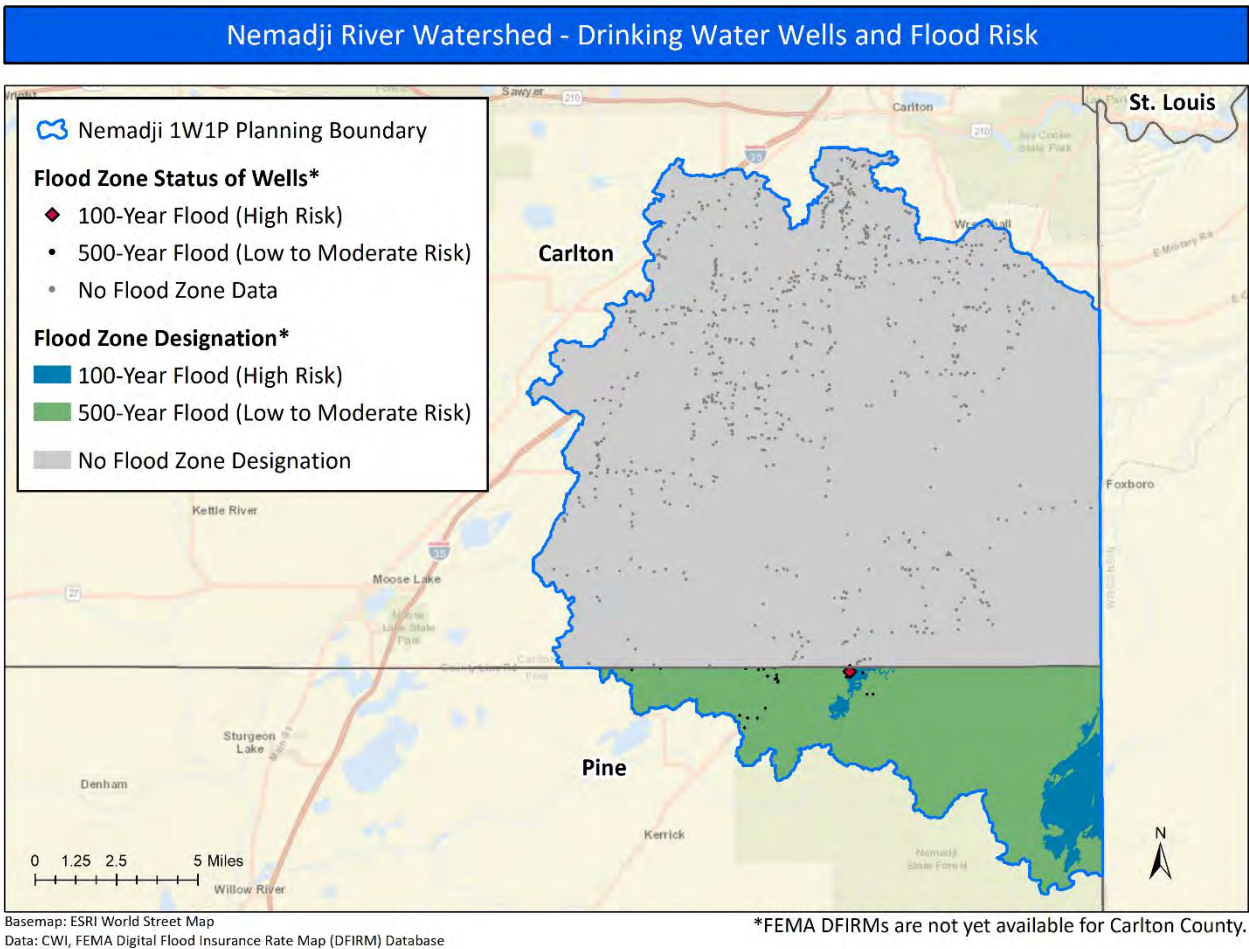


Figure 11: Nemadji River Watershed – Drinking water wells and flood zone risk to contamination.

Nemadji River Watershed Groundwater Issues and Concerns

This section of the report describes the key groundwater quality and quantity issues for the NRW. The descriptions each include an overview of the issue, where the issue is most prevalent, and a few key approaches to address the issue. The NRW [Strategies and Actions to Protect and Restore Groundwater](#) provides a more detailed list of actions to address groundwater issues and concerns.

Groundwater Quality Issues and Concerns

Both naturally occurring and human-made contaminants affect the NRW groundwater quality. Multiple state agencies monitor different types of groundwater wells and public water systems for contaminants. Nitrate and arsenic have been detected in wells sampled in the NRW. This section provides context and data about these contaminants and their occurrence in the watershed. It also

provides information about the following land uses: feedlots, row crop production, subsurface sewage treatment systems, contaminated sites (leaky tank sites and closed landfills), and household hazardous waste in the watershed that may affect groundwater quality.

All public water systems in the watersheds strive to meet Safe Drinking Water Act (SDWA)⁷ requirements for the quality of water served to their customers. However, some public water systems may have water quality issues in their untreated source water that requires either blending or treatment to meet SDWA standards.

Nitrate

Nitrate-nitrogen (referred to as nitrate) is a compound that occurs naturally and has many human-made sources. When nitrate levels are above 3 milligrams per liter (mg/L)⁸ in groundwater, human activity is the likely cause (State of Minnesota Workgroup). Human-induced sources of nitrate include animal manure, fertilizers used on agricultural crops, failing SSTS, fertilizers used at residences and commercially, and nitrous oxides from the combustion of coal and gas.

Nitrate is one of the most common contaminants of groundwater in Minnesota and is a public health concern where found in groundwater used for drinking water. The SDWA standard for nitrate in drinking water is 10 mg/L. Most of the samples taken from wells within the watersheds did not exceed the SDWA standard for nitrate. This dataset includes newly constructed wells, private wells, and other drinking water supply wells. Sampling of newly constructed wells for nitrate began in 1974. Many older wells, pre-well code, are not included in this dataset. [Table 2](#) shows nitrate test results for samples taken from these wells.

Table 2: Summary of nitrate results in drinking water wells of the Nemadji River Watershed.

Depth Completed Range (feet)	Total samples (nitrate)	Minimum concentration (mg/L)	Maximum concentration (mg/L)	Median concentration (mg/L)	Samples at or above 3 mg/L (%)	Samples at or above 10 mg/L (%)
< 50	32	0	9	0.5	18.8	0
50 - 99	124	0	8.6	0.5	7.3	0
100 - 149	131	0	4.2	0.5	3.1	0
150 - 199	71	0	3.5	0.5	1.4	0
>= 200	135	0	2.73	0.5	0	0
Total	493	0	9	0.5	4.1	0

Where Is Nitrate in the Nemadji River Watershed?

High levels of nitrate are present in areas where there are both human-caused sources of nitrate and high pollution sensitivity. The following images help identify where nitrate is detected and at what levels in the watershed:

- [Figure 12](#) compares nitrate levels in wells in the NRW with the pollution sensitivity of the area. The absence of elevated nitrate concentrations throughout most of the watershed may be a

⁷ The Safe Drinking Water Act (SDWA) is the federal law that protects public drinking water supplies throughout the nation. Under the SDWA, EPA sets standards for drinking water quality; MDH is delegated to implement the program in MN to ensure drinking water safety.

⁸ One milligram per liter is the same as 1 part per million (ppm).

function of low-impact land use near the wells or the presence of favorable geochemical conditions in the aquifers. Nitrate requires relatively oxidizing conditions to persist in groundwater, and the presence of locally reducing conditions can remove nitrate. The dataset used to create this figure is the same as that used in [Table 2](#). These nitrate samples were taken from newly constructed wells, private wells, and other drinking water supply wells sampled by the Minnesota Department of Health (MDH).

- [Figure 14](#) shows the location of the two MPCA Ambient Monitoring Wells in the NRW. Samples demonstrated concentrations of most chemicals were below drinking standards, but there are occasional exceedances of drinking water standards by metals, such as beryllium, boron, and manganese.
- MDA Township Testing Program (TTP) was not extended into the NRW due to the lack of row crop agriculture. For more information on the [Township \(Nitrate\) Testing Program](http://www.mda.state.mn.us/townshiptesting) (<http://www.mda.state.mn.us/townshiptesting>).
- There are no MDA ambient monitoring wells locations in the NRW.

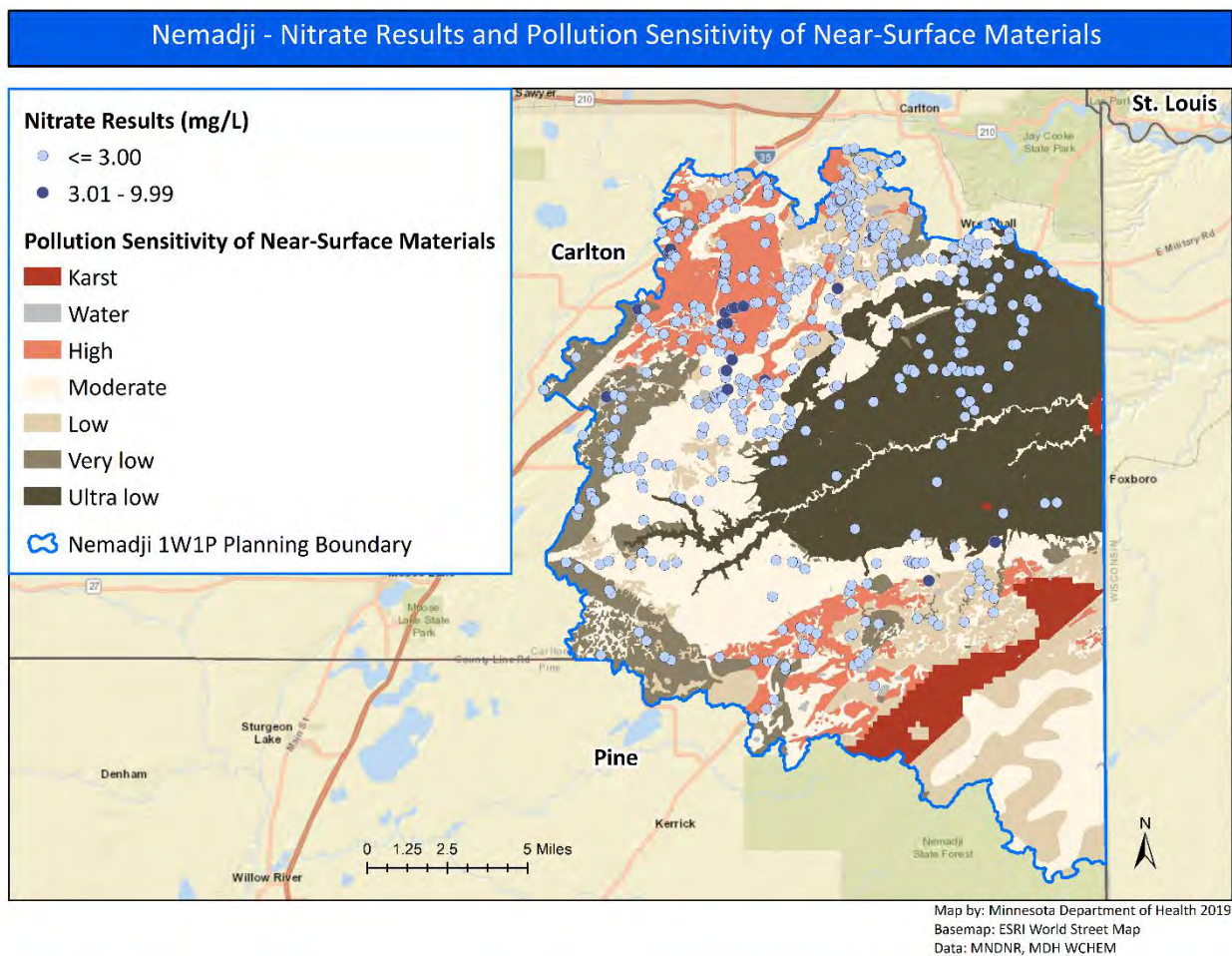


Figure 12: Nemadji River Watershed - Nitrate Results and Pollution Sensitivity of Near Surface Materials

How to Address Nitrate in Groundwater

The Minnesota Groundwater Protection Act established a prevention goal that groundwater be maintained in its natural condition, free from any degradation caused by human activity. When degradation exists, it is important to understand the reflected level of management required based on the nitrate concentration. [Table 3](#) provides a protection framework that identifies management priorities reflective of nitrate concentrations.

Table 3: Nitrate protection framework and associated land use management goals. Implementation activities should build as you move from one classification to the next.

Nitrate Protection Framework	Nitrate Concentration	Implementation Emphasis
Protection – Maintain	0 – 4.9 mg/L	Proactive and preventive; <ul style="list-style-type: none"> ▪ Maintain existing land cover by discouraging or preventing land conversion ▪ Contaminant source management on existing land uses (Agricultural BMPs, SSTS management, easements, forest management plans)
Protection – Threatened	5.0 – 9.9 mg/L	Contaminant source reduction or elimination; <ul style="list-style-type: none"> ▪ Shifting land uses away from those that may leach excess nitrogen (Alternative Management Tools⁹, upgrade failing SSTS, easements)
Restoration – Treatment	10.0 mg/L and above	Active intervention required by public water supplies to avoid drinking water consumption (new sources; treatment) while still aiming for long term contaminant source mitigation through reduction and elimination

[Table 9](#) provides a more comprehensive list of specific actions counties and subwatersheds in the NRW can take to restore and protect groundwater quality related to nitrate.

Pesticides

A pesticide is any substance or mixture of substances intended for preventing, destroying, repelling or lessening the damage of any pest and may be a chemical substance or a biological agent. Consuming water with different types of pesticides in it can cause a variety of health problems. MDA monitors for ‘common detection pesticides’ as a part of the [MDA Pesticide Management Plan](#) (www.mda.state.mn.us/protecting/waterprotection/pmp.aspx). Common detection pesticides are pesticides frequently used in row crop production and include acetochlor, alachlor, atrazine, metolachlor and metribuzin.

⁹ MN Dept. of Agriculture developed Alternative Management Tools to protect groundwater quality from nitrate contamination. For more information, visit MDA [Alternative Management Tools](#) (www.mda.state.mn.us/chemicals/fertilizers/nutrient-mgmt/nitrogenplan/nitrogenmgmt/amts)

Where Are Pesticides in Nemadji River Watershed?

MDA does not have any monitoring wells in the NRW to monitor for common detection pesticides.

How to Address Pesticides in Groundwater

General approaches to reduce the amount of pesticides that may enter groundwater include:

- Providing educational opportunities about pesticide and insecticide BMPs for both agricultural lands and residential/commercial lawns (turf)
- Increasing the adoption of water quality BMPs for pesticides and insecticides

[Table 9](#) provides a more comprehensive list of specific actions the counties and subwatersheds in the NRW can take to restore and protect groundwater quality related to pesticides.

Arsenic

Nearly six percent of the 17 arsenic samples taken from located wells in the NRW have levels of arsenic higher than the SDWA standard of 10 micrograms per liter ($\mu\text{g/L}$).¹⁰ Arsenic occurs naturally in rocks and soil across Minnesota and can dissolve into groundwater. Consuming water with low levels of arsenic over a long time (chronic exposure) is associated with diabetes and increased risk of cancers of the bladder, lungs, liver and other organs. The SDWA standard for arsenic in drinking water is 10 $\mu\text{g/L}$; however, drinking water with arsenic at levels lower than the SDWA standard over many years can still increase the risk of cancer. The EPA has set a goal of 0 $\mu\text{g/L}$ for arsenic in drinking water because there is no safe level of arsenic in drinking water.

Since 2008, the State of Minnesota has required that water from new water supply wells be tested for arsenic. [Table 4](#) outlines the number of well water samples tested for arsenic in the NRW, using the dataset from the Minnesota Well Index (MWI) and well for newly constructed private wells. The table shows the percentage of samples with arsenic levels over the SDWA standard. It is important to remember that arsenic concentrations can be drastically different from nearly identical wells installed on adjoining properties.

Table 4: Summary of arsenic (As) concentrations in wells of the Nemadji River Watershed.

Depth Completed Range (feet)	Total samples (n)	Minimum concentration ($\mu\text{g/L}$)	Maximum concentration ($\mu\text{g/L}$)	Median concentration ($\mu\text{g/L}$)	Samples at or above 5 $\mu\text{g/L}$ (%)	Samples at or above 10 $\mu\text{g/L}$ (%)
< 50	1	0.81	0.81	-	0	0
50 - 99	4	1	11.5	4.8	50	25
100 - 149	5	1	7.7	3.7	40	0
150 - 199	0	-	-	-	-	-
>= 200	7	1	3.68	1	0	0
Total	17	0.81	11.5	2	23.5	5.9

Where Is Arsenic in the Nemadji River Watershed?

[Figure 13](#) shows that arsenic is not found in elevated concentrations throughout the watershed. The dataset used to create [Figure 13](#) is the same information displayed in [Table 4](#). There are elevated levels of arsenic above the drinking water standard of 10 $\mu\text{g/L}$ in wells completed in glacial Quaternary Buried

¹⁰ One microgram per liter is the same as 1 part per billion (ppb).

Artesian aquifer. Typically, elevated arsenic in Minnesota groundwater is associated with glacial lobes originating from northwest Canada. Elevated arsenic is correlated with clay layers and reducing geochemical conditions that release arsenic into the groundwater. Well depths with elevated arsenic range from 60 to 121 feet in the NRW. For wells with arsenic detected but below the drinking water standard, the wells were completed in the Quaternary Buried Artesian aquifer.

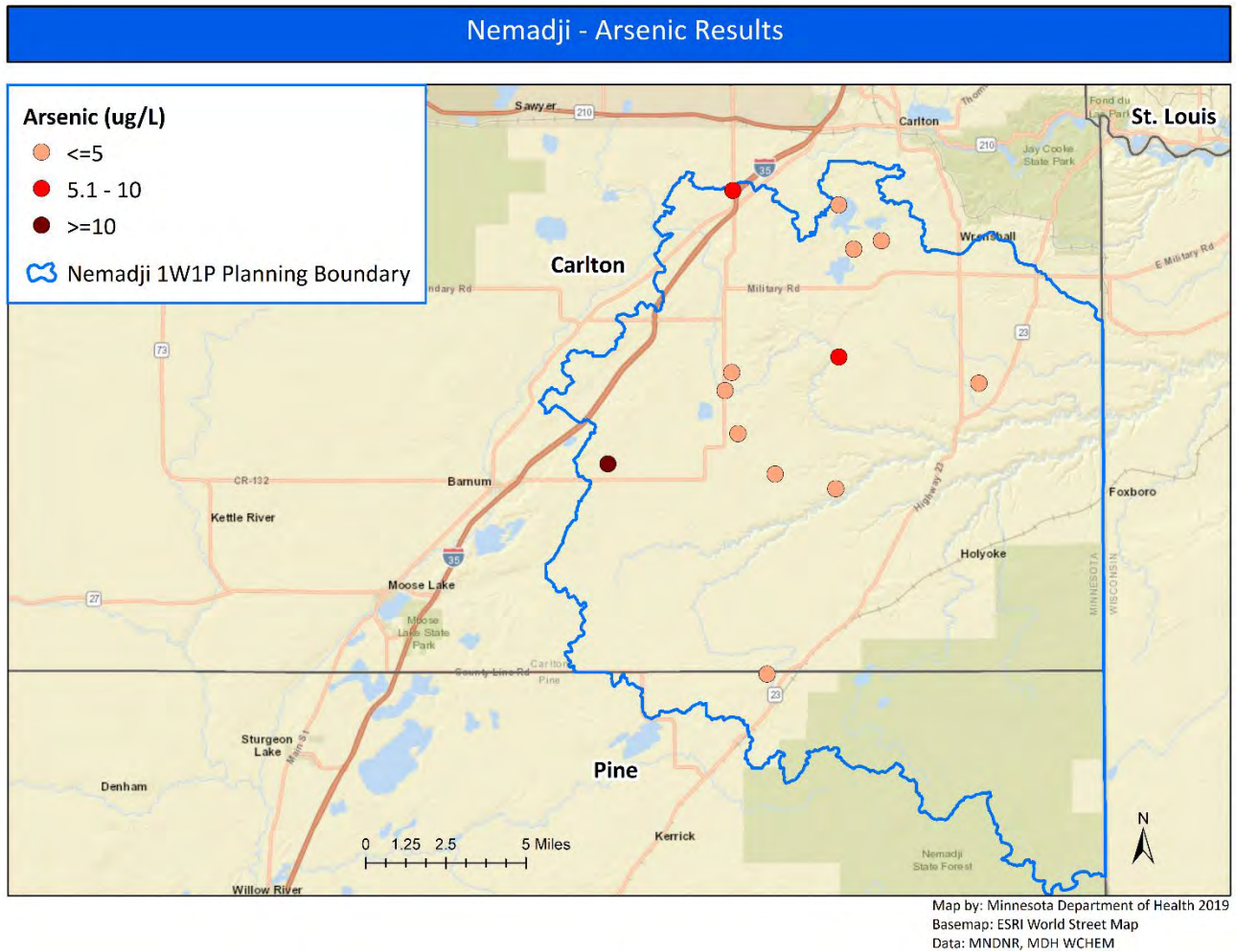


Figure 13: Nemadji River Watershed - Arsenic Results

How to Address Arsenic in Groundwater

Unlike nitrate and pesticides, human activity rarely causes arsenic in Minnesota groundwater, except for local releases of insecticides or wood preservatives into the environment. Therefore, few actions can reduce the amount of arsenic in groundwater. Implementation efforts should focus on making private well users aware of the health risks associated with arsenic, encouraging them to test their water for arsenic, and providing them with treatment options to keep their drinking water safe when arsenic is present.

Radionuclides

Radioactive materials, also called radionuclides (Radium), are both naturally occurring and human-made. Drinking water that has radium in it puts you contact with very low doses of radiation every day. You have a higher risk of getting cancer if you drink water with radium in it every day for many years.

Concentrations of naturally occurring radioactive radium has not been detected in groundwater samples in the NRW. The exact source of these compounds is not well understood. Radium is

associated with granitic and metamorphosed crystalline rocks and sandstone aquifers (Szabo, Z., Fischer, J. M., Hancock, T. C., 2012). It is commonly found the Mt. Simon Aquifer or fractured Sioux Quartzite geologic units. Their presence in the groundwater is related to reducing geochemical conditions with low oxygen, acidic water, high dissolved solids, and the very slow rate of groundwater flow in these bedrock layers (Szabo, Z., Fischer, J. M., Hancock, T. C., 2012).

Where are Radionuclides in the Nemadji River Watershed?

Not enough is known about radium (or other radionuclide) distribution in the aquifers beneath the NRW. The sparse results do not indicate a problem at this time.

How to Address Radionuclides in Groundwater

Implementation efforts should focus on awareness that radionuclides may be found in groundwater. The factors that contribute to the presence of radionuclides in groundwater are not well understood at this point. If private well users are concerned about radionuclides in their well, they can pay to have their water tested through an accredited laboratory. Water softeners and reverse osmosis are effective at removing radium from groundwater. Learn more at [Radionuclides \(Radium\) in Drinking Water](http://www.health.state.mn.us/divs/eh/water/contaminants/radionuclides.html) (www.health.state.mn.us/divs/eh/water/contaminants/radionuclides.html).

Ambient Groundwater Monitoring

The MPCA's Ambient Groundwater Monitoring Program monitors trends in statewide groundwater quality by sampling for a comprehensive suite of over 100 chemicals including nutrients, metals, anions and cations, and volatile organic compounds. The Ambient Groundwater Network currently consists of approximately 270 sites that represent a mix of deep domestic wells and shallow monitoring wells in non-agricultural regions across the state. The primary focus is on shallow aquifers that underlie urban areas, due to the higher tendency of sensitivity to pollution, and are predominately located in sand and gravel and Prairie du Chien-Jordan aquifers.

From 2013 to 2019, one ambient network well within the NRW were sampled annually for the ambient groundwater suite. The second ambient network well was sampled from 2016 to 2022. Results from the ambient groundwater samples indicate that the detections were within the human health guidelines set by either the Environmental Protection Agency or the MDH. The detections of inorganic nitrogen occurred at one of the monitoring wells, five out of the ten years, but was detected at very low levels. Chloride was detected in both wells.

MDH hosts information on a [List of Contaminants in Water](http://www.health.state.mn.us/communities/environment/water/contaminants/index.html) (www.health.state.mn.us/communities/environment/water/contaminants/index.html), as well as [CECs](http://www.health.state.mn.us/communities/environment/risk/guidance/dwec/index.html) (www.health.state.mn.us/communities/environment/risk/guidance/dwec/index.html).

Nemadji River Watershed - MPCA Ambient Groundwater Monitoring Well Network

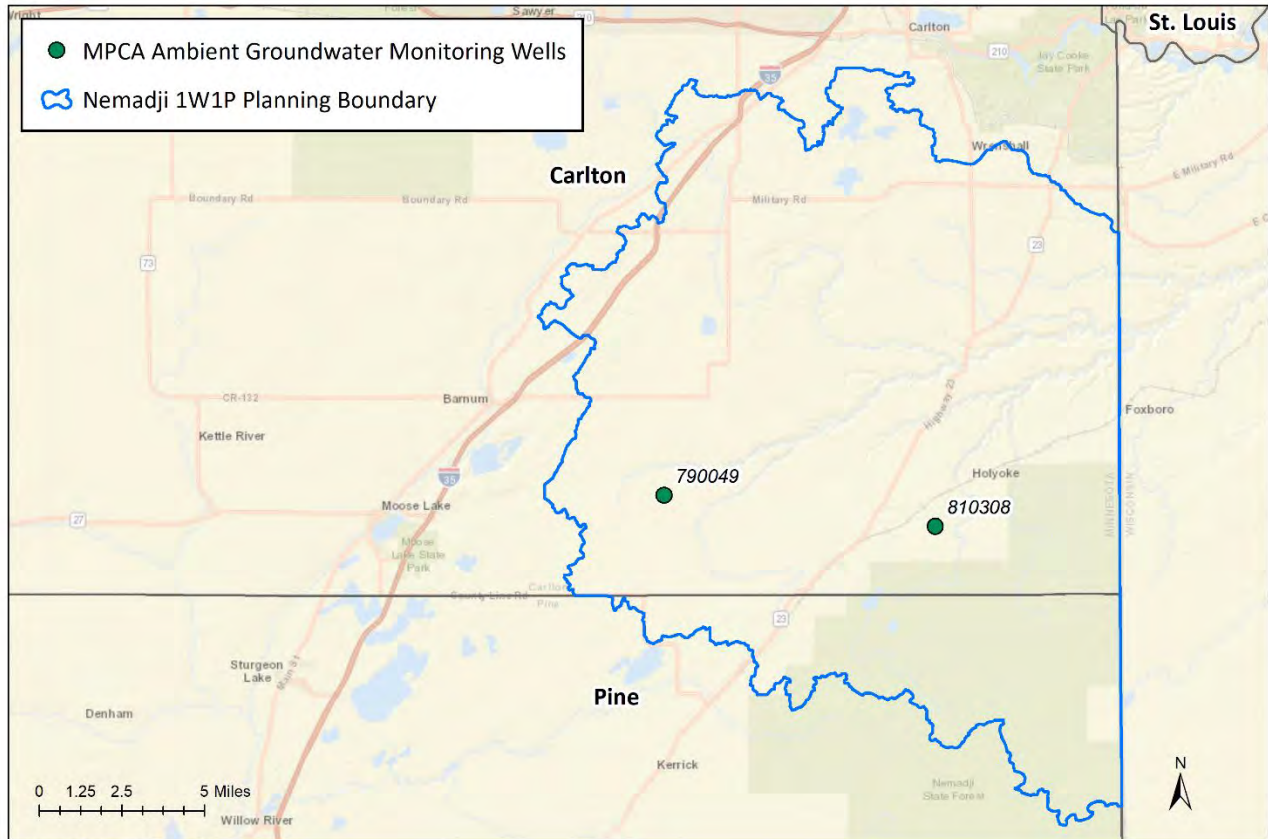


Figure 14: Nemadji River Watershed - MPCA Ambient Groundwater Monitoring Well Network

Potential Contaminant Sources

Some land use practices make it easier for contaminants to get into groundwater. Key land uses that are potential contaminant sources in the NRW are described below.

Animal Feedlots

MPCA regulates the land application and storage of manure generated from animal feedlots in accordance with Minnesota Rule Chapter 7020. The MPCA [Feedlots Program](https://www.pca.state.mn.us/quick-links/feedlots) (<https://www.pca.state.mn.us/quick-links/feedlots>) requires that the land application and storage of manure be conducted in a manner that prevents nitrate contamination to both groundwater and surface water. Animal manure contains significant quantities of nitrogen and pathogens. Improper management of manure, especially in places with high pollution sensitivity, can contaminate groundwater.

MDA hosts an interactive map that provides information on local ordinances regulating animal agriculture in Minnesota's counties. The information includes the most common areas of regulations, such as setbacks and separation distances, conditional use permits, feedlot size limitations, and minimum acreage requirements. For more information, visit the [Local Ordinances Regulating Livestock - Web Mapping](http://www.mda.state.mn.us/local-ordinances-regulating-livestock-minnesota) (www.mda.state.mn.us/local-ordinances-regulating-livestock-minnesota).

MDA developed a new tool in collaboration with the National Weather Service called the [Minnesota Runoff Risk Advisory Forecast \(RRAF\) system](http://www.mda.state.mn.us/protecting/cleanwaterfund/toolstechnology/runoffrisk) (www.mda.state.mn.us/protecting/cleanwaterfund/toolstechnology/runoffrisk). RRAF is designed to

help farmers and commercial applicators determine the best time to apply manure to reduce the probability of off target movement of valuable nutrients and protect water resources.

Where Are Animal Feedlots in Nemadji River Watershed?

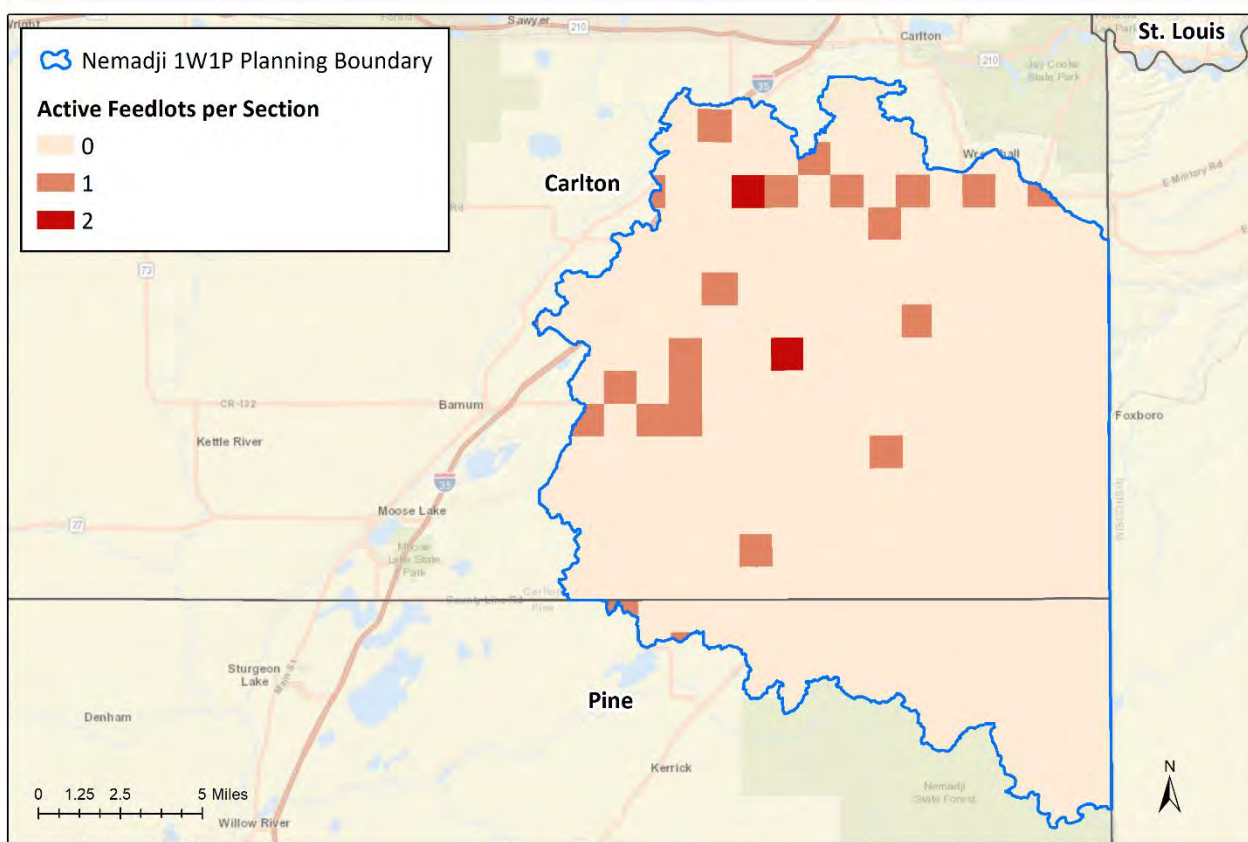
The NRW has 22 active feedlots. Minnesota Rule 7020 allows the MPCA to transfer or ‘delegate’ regulatory authority and administration of certain parts of the feedlot program to a county. A delegated county regulates feedlots with less than 1,000 animal units; MPCA regulates anything above that threshold. County feedlot programs have responsibility for implementing state feedlot regulations including: registration, permitting, inspections, education/assistance and complaint follow-up. Both Carlton and Pine County rely on the MPCA to administer the feedlot program locally.

[Table 5](#) outlines the number of registered feedlots in the NRW for each county. [Figure 15](#) contains a grid that depicts the number of active feedlots in each six by six-mile section of the watershed. Darker colors correspond to a higher concentration of active feedlots.

Table 5: Number of registered feedlots and the delegated counties

Counties	Number of Registered Feedlots per County	Delegated County
Carlton	21	No
Pine	1	No

Nemadji River Watershed - Count of Active Feedlots per Section



Basemap: ESRI World Street Map
Data: MPCA

Figure 15: Nemadji River Watershed – Active Feedlots. There are 22 active feedlots within the watershed

How to Protect Groundwater from Contamination

Manure management plans, feedlot inspections, permitting, technical assistance and record keeping are all used to manage nitrogen impacts to water quality. It is important to prioritize activities in the areas most sensitive to groundwater first. [Table 9](#) provides a more comprehensive list of specific actions partners in can take to protect groundwater from nitrate and pathogen contamination.

Row Crop Agriculture

Row crop agriculture or cultivated crops ([Figure 3](#)) is limited in the NRW covering 11 percent of the watershed. Impacts from row crop production to water resources include nitrogen loss in the form of nitrate to groundwater, which can move downward to aquifers or be laterally dispersed to lakes and rivers. Tile drainage is another pathway for nitrogen to reach surface water systems, however this is not a focus of the GRAPS report being the TMDL and WRAPS reports assess impacts. Agricultural chemicals, including pesticides, are another risk for groundwater contamination from row crop agriculture. Both nitrate and pesticides are addressed in the [Groundwater Quality Issues and Concerns](#) section of this report.

Subsurface Sewage Treatment Systems (SSTS)

Of the approximately 450,000 SSTS (commonly called septic systems) across the state, slightly over 100,000 of them are estimated to be failing. As more time passes, additional systems are likely to fail. Failing SSTS can pollute both surface and groundwater. A failing system is one that does not provide

adequate separation between the bottom of the drain field and seasonally saturated soil. The wastewater in SSTS contains bacteria, viruses, parasites, nutrients, and some chemicals. SSTS infiltrate treated sewage into the ground, which ultimately travels to groundwater.

Where Are SSTS in the Nemadji River Watershed?

SSTS are found in all six counties in the NRW. Information reported by counties indicate a relatively small to high number of failing SSTS in the watershed ([Table 6](#)). State regulations require each county to adopt a local SSTS ordinance and that eminent health threats or failing systems be replaced and brought up to current standards. Even with a required ordinance, some counties still have identified gaps in their SSTS program, ranging from lack of records on treatment system age, type or function, known unsewered communities, and lack of a point of sale requirement triggering an inspection through a property sale.

Table 6: Reported number of failing SSTS in each county within the Nemadji River Watershed. Data reported is from 2017.

County	Estimated number of failing SSTS per 1,000 acres
Carlton	2 – 3
Pine	0 – 1

How to Protect Groundwater from SSTS Contamination

SSTS must be properly sited, designed, constructed and maintained to minimize the potential for disease transmission and groundwater contamination. Each county carries out permitting, inspections and operation of the SSTS program locally. [Table 9](#) provides a more comprehensive list of specific actions the NRW can take to assure SSTS do not contaminate groundwater. You can find more information about building and maintaining SSTS at [Subsurface Sewage Treatment Systems](https://www.pca.state.mn.us/water/subsurface-sewage-treatment-systems) (<https://www.pca.state.mn.us/water/subsurface-sewage-treatment-systems>).

Contaminated Sites

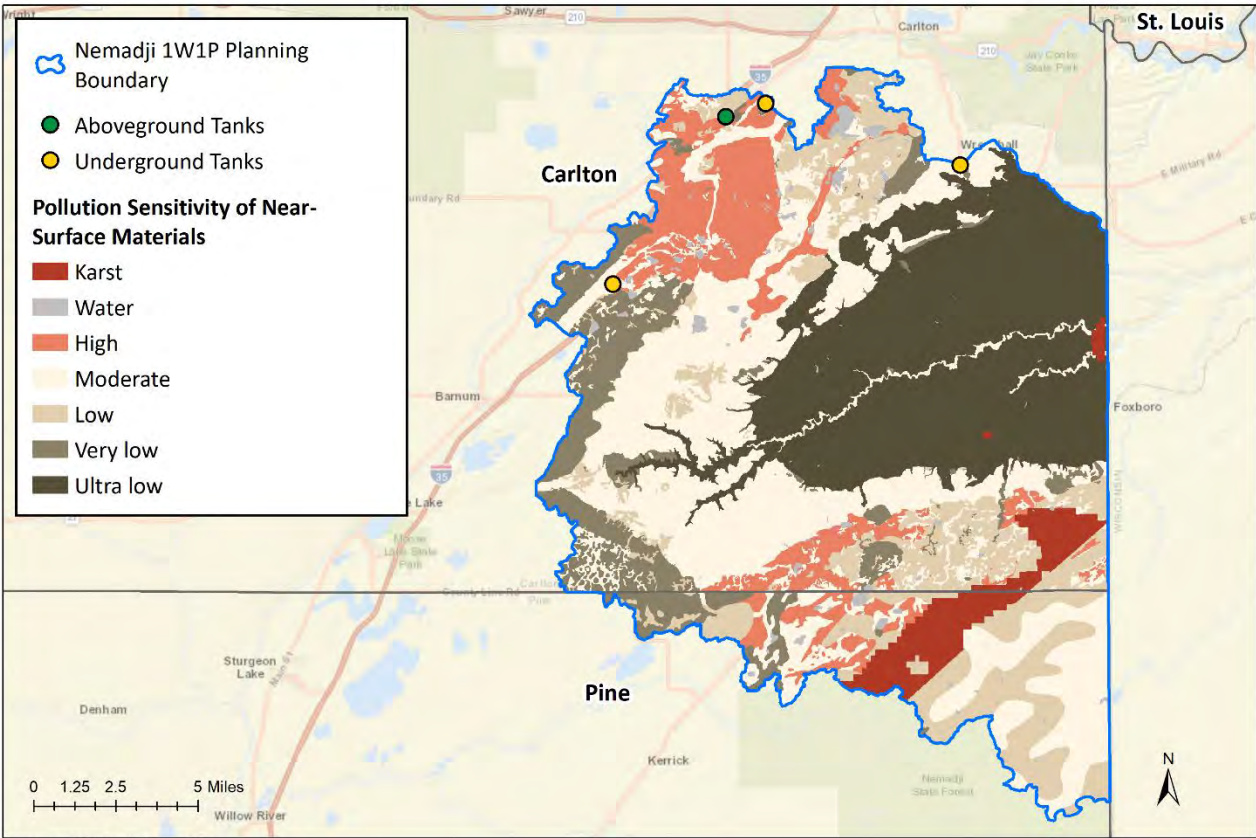
The MPCA identified seven active tanks in the NRW. These types of contaminated sites (also referred to as point sources) have the potential to contaminate groundwater with a variety of chemicals.

Where Are Contaminated Sites in the Nemadji River Watershed?

[Figure 16](#), maps active tank and leak sites compared to pollution sensitivity of near-surface materials in the NRW. The following site also provide maps to help identify contaminated sites.

- [What's in My Neighborhood](https://www.pca.state.mn.us/data/whats-my-neighborhood) (<https://www.pca.state.mn.us/data/whats-my-neighborhood>): This app identifies potential contamination sites for water quality, feedlots, hazardous waste, investigation and clean up, air quality and solid waste.

Nemadji River Watershed - Active Above-Ground and Underground Tank Sites



Basemap: ESRI World Street Map
Data: Tank Sites from MPCA, Pollution Sensitivity from DNR

Figure 16: Nemadji River Watershed - MPCA Active Tank Sites and Pollution Sensitivity of Near-Surface Materials

How to Protect Groundwater from Contaminated Sites

Contaminated sites should be identified before making or changing any land use plans, zoning maps, and/or ordinances. [Table 9](#) provides a more comprehensive list of specific actions the NRW can do to assure contamination sites do not further contaminate groundwater.

Stormwater

The MPCA [Stormwater Program](https://www.pca.state.mn.us/water/stormwater) (<https://www.pca.state.mn.us/water/stormwater>) regulates the discharge of stormwater and snowmelt runoff from municipal separate storm sewer systems (MS4s), construction activities and industrial facilities, mainly through the administration of the National Pollutant Discharge Elimination System (NPDES)/State Disposal System (SDS) Program. MS4s in Minnesota must satisfy the requirements for the MS4 General Permit if they are located in an urbanized area and used by a population of 1,000 or more or owned by a municipality with a population of 10,000 or more, or a population of at least 5,000 and the system discharges to specially classified bodies of water. Entities with an MS4 permit require the treatment and management of stormwater runoff.

The management of stormwater runoff is increasingly reliant on the infiltration of stormwater into the soil to control the volume of runoff. A number of stormwater practices concentrate runoff and force infiltration into the soil where it can recharge groundwater aquifers. The impacts of these practices on groundwater quality have not been thoroughly evaluated.

How to Manage Potential Stormwater Infiltration Risk

Caution should be observed when infiltrating stormwater, especially in areas with vulnerable drinking water sources. Use the MDH [Stormwater Guidance for Sites in Drinking Water Supply Management Areas](https://stormwater.pca.state.mn.us/images/d/d3/Flow_Chart_-_MDH_Stormwater_Guidance_for_Sites_in_Drinking_Water_Supply_Management_Areas.pdf) (https://stormwater.pca.state.mn.us/images/d/d3/Flow_Chart_-_MDH_Stormwater_Guidance_for_Sites_in_Drinking_Water_Supply_Management_Areas.pdf) to better understand when infiltration is appropriate in wellhead protection areas. [Table 9](#) provides a more comprehensive list of additional actions the NRW can take to prevent stormwater infiltration from contaminating groundwater.

Household Hazardous Waste

Many household products you use to clean your home, maintain your yard, and control animals and insects contain hazardous materials. When these products are disposed of improperly, it may lead to groundwater contamination.

Minnesota's household hazardous waste (HHW) program is a partnership with the MPCA and the counties. Together, they provide education about HHW storage and disposal as well as maintain a network of regional, local and mobile facilities to collect HHW statewide. In addition, many counties offer temporary collection sites, including one-day events. The MPCA has a searchable database to find HHW collection sites for your county, [Household Hazardous Waste Collection Sites](https://www.pca.state.mn.us/living-green/find-your-household-hazardous-waste-collection-site) (<https://www.pca.state.mn.us/living-green/find-your-household-hazardous-waste-collection-site>).

Similar to the partnership for HHW, MDA partners with counties to provide a means to safely dispose of unwanted and unusable pesticides through the Waste Pesticide Collection Program. Through this program, pesticide users in every county around the state have opportunities to dispose of unwanted agricultural pesticides through county HHW facilities, mobile collection events or by attending MDA schedule events. Participants can drop off up to 300 pounds free of charge. MDA manages a waste pesticide collection schedule to learn about partnerships and scheduled events, MDA [Waste Pesticide Collection Schedule](http://www.mda.state.mn.us/chemicals/spills/wastepesticides/schedule.aspx) (www.mda.state.mn.us/chemicals/spills/wastepesticides/schedule.aspx).

How to Protect Groundwater from Household Hazardous Waste Contamination

Promote HHW and the pesticide collection program availability to residents, and evaluate opportunities to expand services to increase participation. [Table 9](#) provides a more comprehensive list of specific actions the NRW can take to assure consumer products do not contaminate groundwater.

Pharmaceuticals

The presence of pharmaceuticals in water is of increasing concern because they may cause harm to humans and aquatic life. Pharmaceuticals enter rivers, lakes and groundwater when human waste, animal waste or discarded medications move from stormwater systems, sewer systems or septic tanks into water. Wastewater and drinking water treatment may not completely remove pharmaceuticals. As a result, these chemicals can be found in drinking water sources.

How to Protect Groundwater from Pharmaceutical Contamination

Do not flush old or unwanted prescription or over the counter medications down the toilet or drain, and do not put them in the trash. There are more than 240 medication collection boxes located at law enforcement facilities and pharmacies in Minnesota. These collection sites do not charge for disposal. You can use the Earth 911 website to identify collection sites by zip code, [Locations that take medications](http://search.earth911.com/?what=Medications&where=MN) (search.earth911.com/?what=Medications&where=MN). If a disposal site is not available, follow the MPCA guidance to minimize risk to the environment, [Medication Disposal Guidance](https://www.pca.state.mn.us/living-green/managing-unwanted-medications) (<https://www.pca.state.mn.us/living-green/managing-unwanted-medications>).

Groundwater Quantity Issues and Concerns

There is only one long-term permit holder in the NRW, who uses the water for agricultural irrigation. Because of this the permitted groundwater use is only a few million gallons per year. There are some dewatering permits with intermittent usage, mostly for construction. There is one active observation well in the watershed; it is a surficial sand (water table) well and had no statistical trend in water level.

Groundwater Use

A water-use appropriation permit is required from the DNR for groundwater users withdrawing more than 10,000 gallons of water per day or 1 million gallons per year. This provides the DNR with the ability to assess which aquifers are being used and for what purpose. Permits require annual water-use reporting. This information is recorded using Minnesota Permitting and Reporting System (MPARS), which helps the DNR track the volume, source aquifer, and type of water use. The DNR has records of reported water use from 1988 to the present.

[Figure 17](#) - [Figure 19](#) show graphs of water use over time from 1988 to 2017. A summary of reported 2017 water use by use category versus source aquifer is shown in [Table 7](#). [Figure 20](#) show the distribution of permitted wells with reported 2017 water use, categorized by use category and aquifer type, respectively.

Annual groundwater use in the NRW was zero most years prior to 2008 and jumped up to 8 million gallons in 2009 when the single permittee switched from surface water to groundwater ([Figure 17](#)). Starting in 2009, surface water use dropped to 0 most years.

The permitted groundwater withdrawals are pumped from surficial sand (water table) aquifers ([Figure 18](#)). Agricultural irrigation is the largest use category in every year from 2009 to present ([Figure 20](#)).

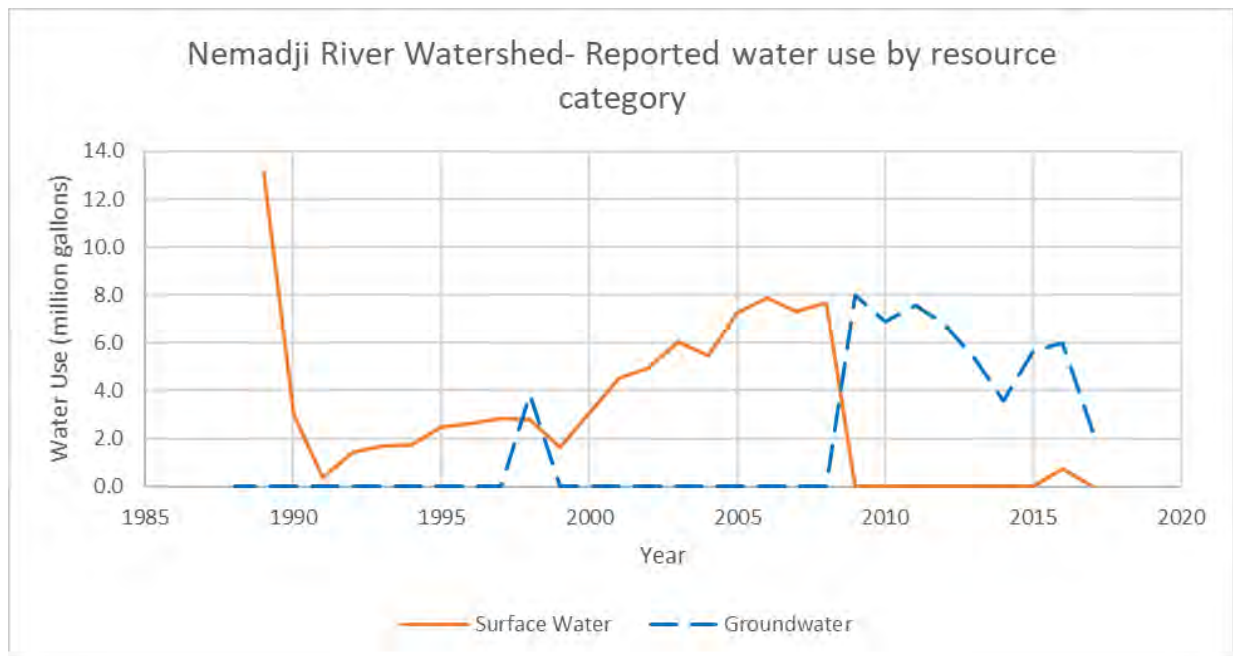


Figure 17: Reported water use from DNR permit holders by resource category. There are very few appropriation permit holders in the NRW planning area. The same permit holder used surface water until 2008 and then started using groundwater.

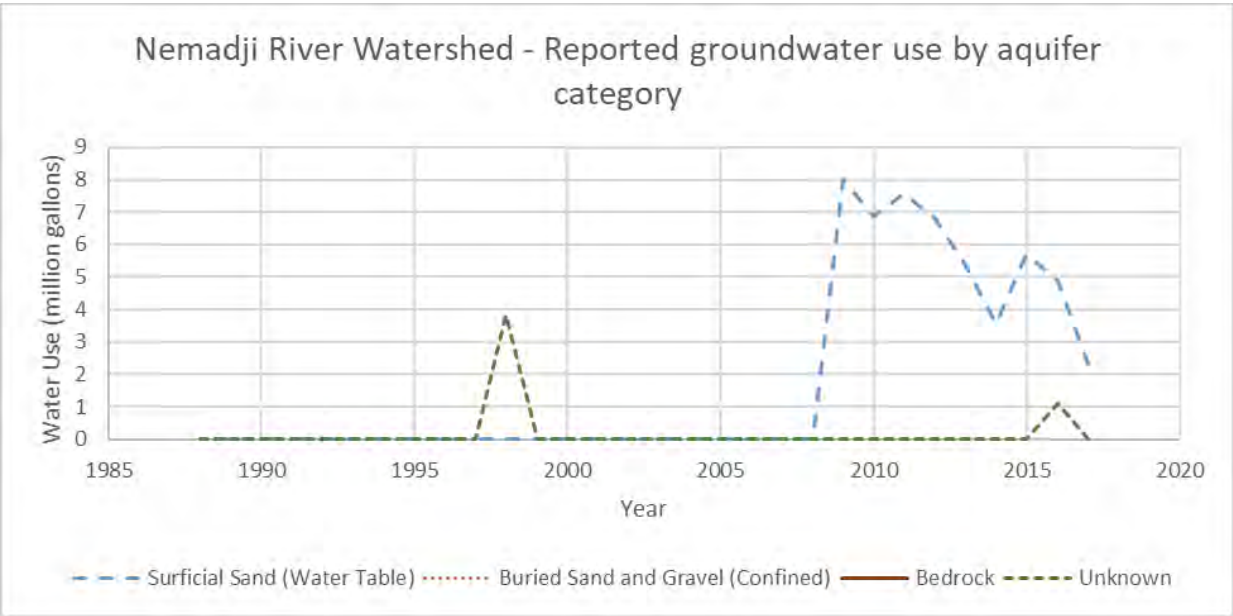


Figure 18: Reported groundwater use from DNR permit holders by aquifer category. There is one primary permit holder whose wells are completed in the surficial sand (water table) aquifer.

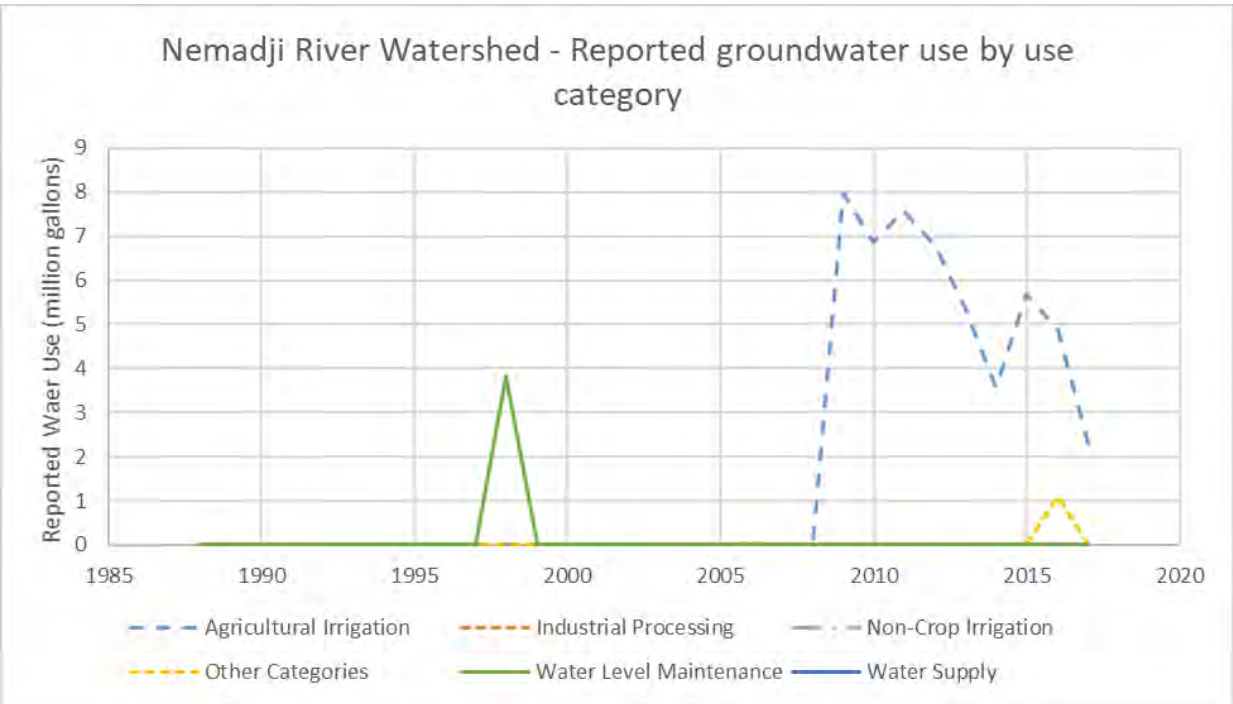


Figure 19: Reported groundwater use from DNR permit holders by use category. The one predominant permit is for agricultural irrigation.

Table 7¹¹: Reported 2017 water use from DNR groundwater permit holders in million gallons per year.

Use Category	Surficial Sand Aquifer (Water Table)	Buried Sand & Gravel Aquifer (Confined)	Bedrock Aquifer	Unknown	Total (mgy)	Total (percent)
Agricultural Irrigation	2.3	—	—	—	2.3	100.0
Heating/Cooling	—	—	—	—	—	—
Industrial Processing	—	—	—	—	—	—
Non-Crop Irrigation	—	—	—	—	—	—
Other Categories	—	—	—	—	—	—
Power Generation	—	—	—	—	—	—
Water Level Maintenance	—	—	—	—	—	—
Water Supply	—	—	—	—	—	—
Total (mgy)	2.3	—	—	—	2.3	—
Total (percent)	100.0	—	—	—	—	100 *

¹¹ Data from MPARS; mgy, million gallons per year; dash marks (-) indicate no use in those categories; * percentages may not equal 100 due to rounding.

Nemadji River Watershed - Active DNR Groundwater Appropriation Permits

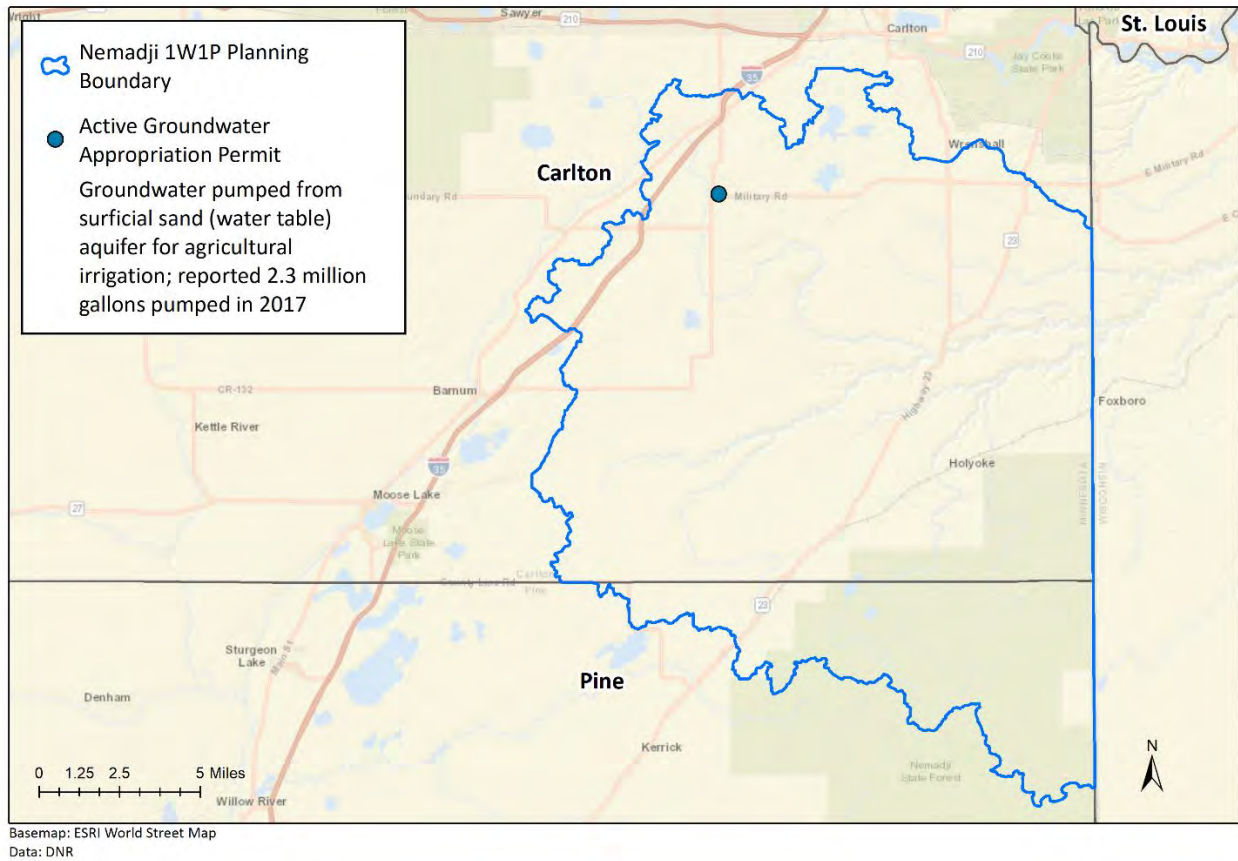


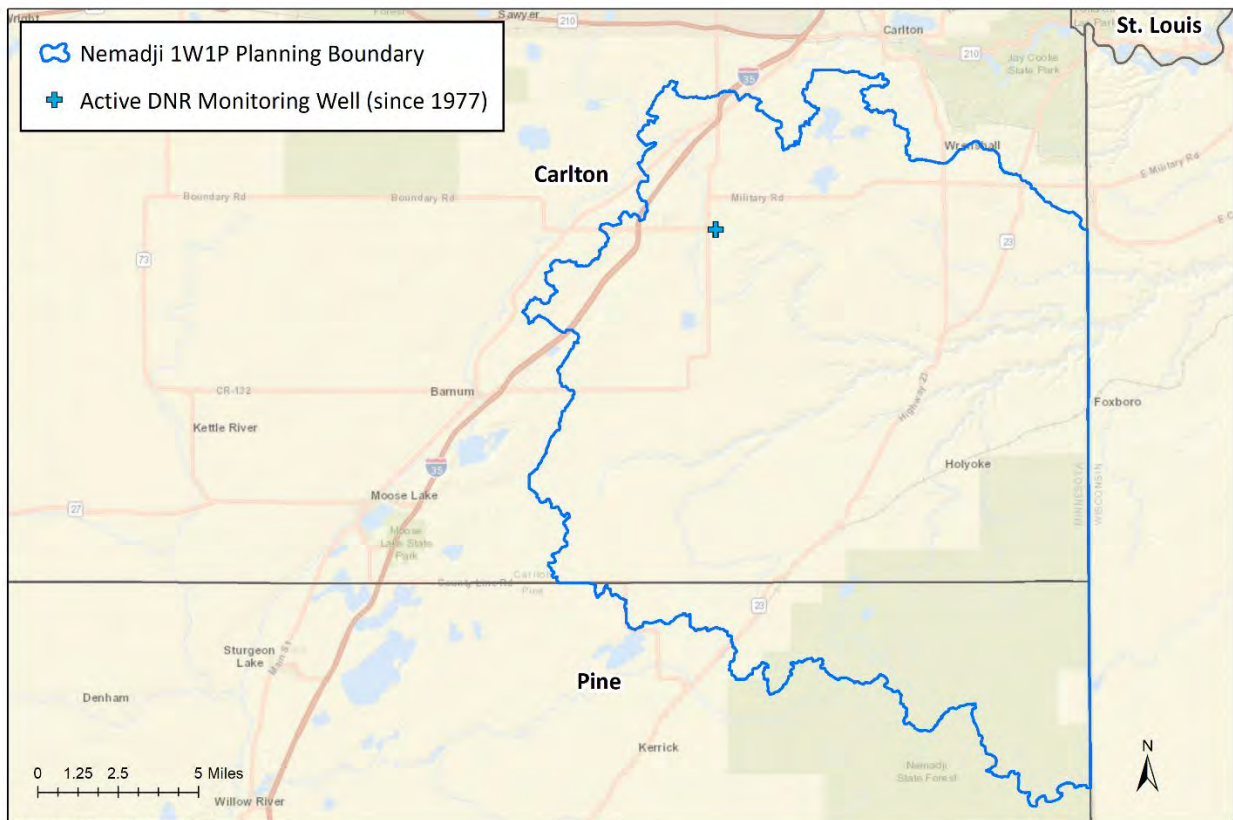
Figure 20: Nemadji River Watershed - Distribution of groundwater appropriation permits for 2017 by volume reported and use category. There is only one active permit; the water use was for agricultural irrigation. The well is completed in the surficial sand (water table) aquifer.

Groundwater Level Monitoring

The DNR maintains a statewide groundwater-level monitoring program for assessing groundwater resources, determining long-term trends, interpreting impacts of pumping and climate, planning for water conservation, evaluating water conflicts, and managing water resources.

There is one active groundwater-level monitoring well in the watershed study area (Figure 20). This surficial sand (water table) well has been measured since the 1970s. Because of the length of record there were enough water-level measurements to calculate a statistical trend using the Mann-Kendall non-parametric statistical method. This one surficial sand (water-table) well had no trend.

Nemadji River Watershed - Active DNR Monitoring Wells



Basemap: ESRI World Street Map
Data: DNR

Figure 21: Nemadji River Watershed – Active Groundwater-Level Monitoring Wells in the watershed by decade monitoring started. There is only one active obwell that was installed in the 1970s.

Nemadji River Watershed - Active DNR Observation Wells with Hydrographs



Basemap: ESRI World Street Map
Data: DNR

Figure 22: Location of active groundwater-level monitoring wells with enough data to calculate a statistical trend. Trends are calculated by the Mann-Kendall non-parametric statistical method. The one well with enough data to calculate a trend had no trend. A hydrograph for the well is also shown.

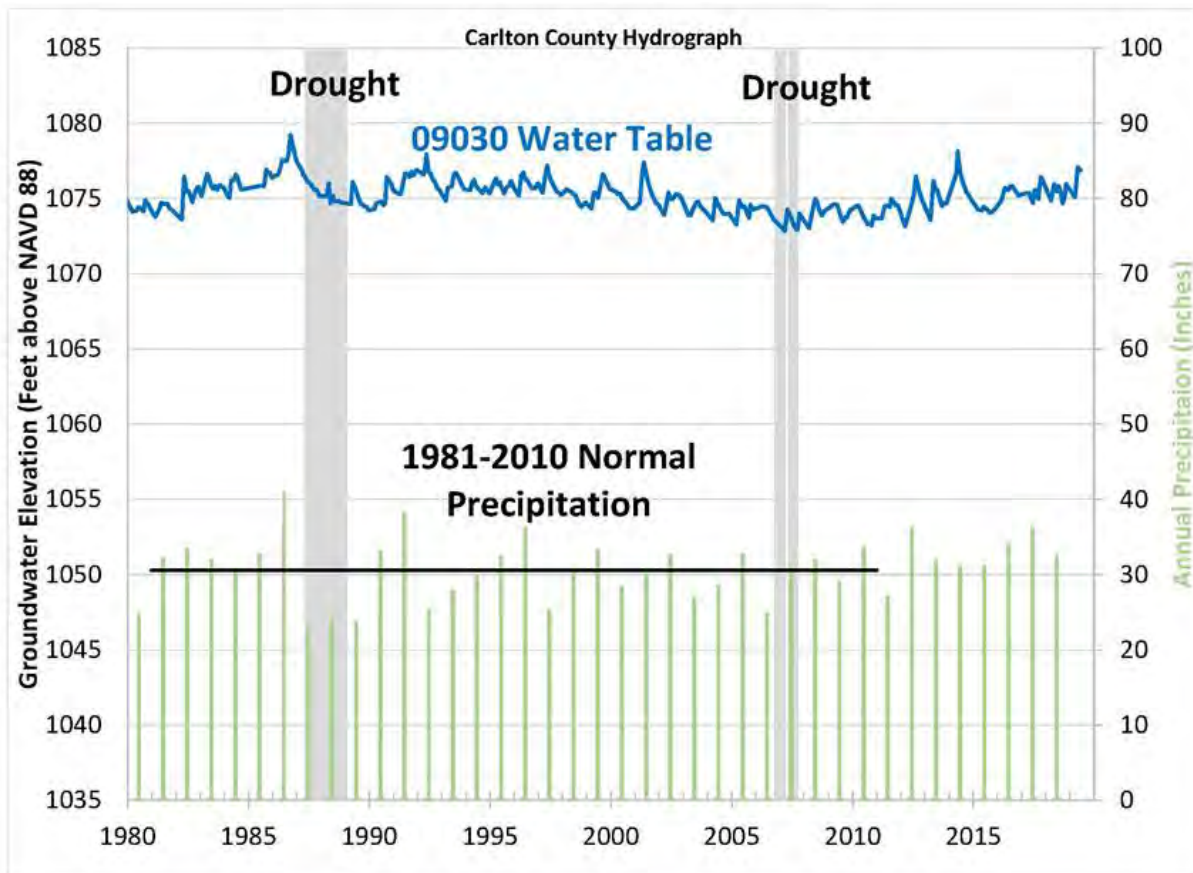


Figure 23: Hydrograph of groundwater-level monitoring well 09030. The water level has no trend over the period 1980-2018.

Groundwater Connected Natural Features at Risk

The NRW includes significant natural features, including surface waters that depend on groundwater to sustain them. Groundwater appropriations and land-use changes can impact the health of these natural resources. If groundwater quantity or quality is degraded, these resources are at risk.

Groundwater Flow Dominated Lakes

All lakes are connected to groundwater, but the specific interaction between lake water and groundwater depends on the geology, topography, and volume of surface-water inflow and outflow associated with the lake. There are three basic lake types (Petersen and Solstad, 2007):

1. Lakes dominated by surface water inflow and outflow resulting from a large ratio of contributing surface watershed area to lake area.
2. Lakes dominated by groundwater inflow and outflow resulting from a smaller ratio of contributing surface watershed area to lake area (10 or less). This lake type is often landlocked with no surface outlet. Although for the purposes of this GRAPS report, the lake level outlet elevation has not been studied. Lakes have been put into this classification solely by watershed to lake area ratio.
3. Lakes intermediate between the first and second types. This applies to lakes that typically have a large watershed to lake area ratio, but during times of drought, the lake level will drop below the outlet level. Groundwater often becomes a significant part of the inflow to these lakes during extended dry periods.

Only the groundwater-dominant lakes as defined in type 2 above are shown in this report ([Figure 24](#)). Eleven lakes in the NRW have a watershed to lake area ratio of 10 or less and are considered a groundwater-dominated lake. Large-scale groundwater pumping near a lake will likely have more impact on groundwater-dominated lakes than on surface water-dominant lakes.

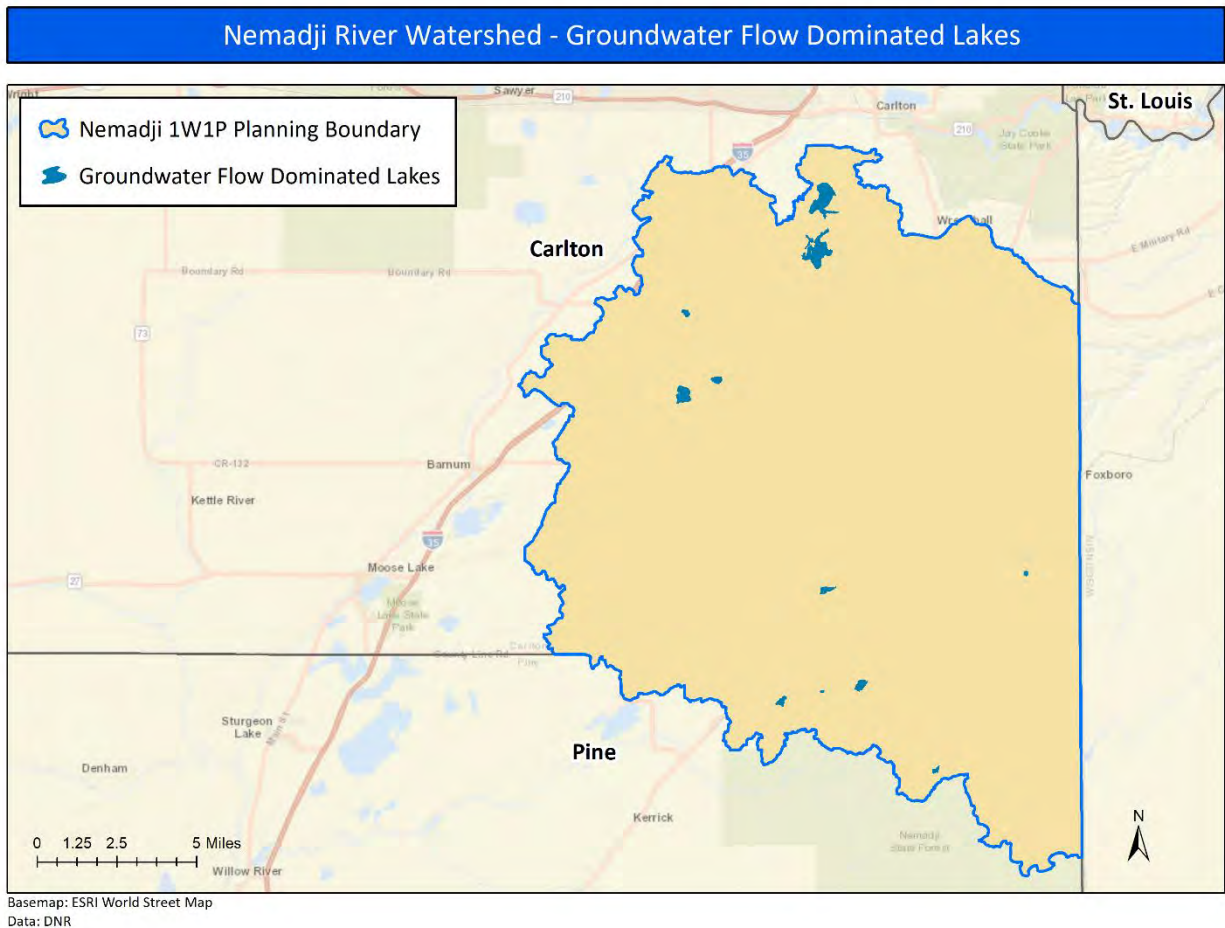


Figure 24: Groundwater-Dominated Lakes in the Nemadji River Watershed. There are eleven groundwater-flow dominated lakes in the watershed.

How to Address Groundwater Quantity Issues

Most groundwater quantity (sustainability) issues are the result of overuse of groundwater and/or reduction in recharge to the underlying aquifer. Therefore, the strategies to address water quantity issues are similar, regardless of the groundwater quantity issue. The two primary goals to assure water sustainability are:

- **Water conservation:** Reduce or limit the amount of groundwater used
- **Promote or protect recharge:** Find ways for water to infiltrate back into the ground

There are a variety of strategies to help meet water conservation and recharge goals. The type of strategy used depends on the primary factor affecting quantity in the area in question. Strategies include: conservation easements, cropland management, education and outreach, irrigation water management and land use planning and management. ([Table 9](#)) provides a more comprehensive list of specific actions the NRW can take to conserve water and promote recharge.

Nemadji River Watershed Strategies and Actions to Restore and Protect Groundwater

This section provides tips for prioritizing and targeting restoration and protection strategies and makes suggestions about what strategies and actions would be most appropriate within different areas of the watershed. Information on the geological, ecological and sociological conditions for each county and subwatershed (HUC-10) informs which strategies and actions would be effective for each HUC-10 and county.

Tips for Prioritizing and Targeting Strategies and Actions

Determine Your Goal

You may decide to address an issue because of known instances or threats in an area, or maybe you are working in a geographic area because of jurisdiction or some other factors. The Actions and Strategies Table ([Table 9](#)) will help you focus on the goal, for instance, reducing nitrate in groundwater. Then you will need to decide, using the table, if you would like to focus on conservation easements, outreach and education, nutrient management, or some other strategy.

Match the Right Action with the Right Location

The Actions and Strategies Table ([Table 9](#)) will help you determine where the actions would be most effective. For instance, an activity that reduces nitrate in groundwater may be more valuable in sensitive areas or vulnerable wellhead protection areas. Or, if you are focused on a limited geography, the table will help you determine what actions are applicable to that area. Considering the sensitivity combined with the presence of drinking water wells and vulnerable wellhead protection areas can help further focus efforts. In another example, factors such as the presence of groundwater dependent features and a concentration of large appropriation wells can help determine where efforts to promote conservation and recharge would be most effective.

Know the Pollution Sensitivity

Groundwater quality is impacted by both point and non-point source pollution. These potential contaminant sources need to be managed according to the pollution sensitivity of the aquifer ([Figure 5](#)). Examining the sensitivity of the aquifer as it relates to contamination risk helps determine the level of management necessary to protect groundwater quality. For example, a failing septic system has a greater potential to contaminate the aquifer in a highly sensitive setting with coarse textured material than an area with low sensitivity that has a protective clay layer that retards the movement of water into the aquifer.

Consider Multiple Benefits

Oftentimes, the restoration and protection strategies identified for both groundwater and drinking water positively influence other ecosystem services, such as surface waters, habitat, and pollinators, among others. Managing water as ‘one water’, rather than parceling it out to reflect the different aspects of water as it moves through the hydrologic cycle, allows for better planning and allocation of resources. The far right columns of the Actions and Strategies Table ([Table 9](#)) identifies the multiple benefits that could result from implementing the action.

Leverage Other Programs and Practices

Utilize existing Federal and State programs that are already working in the NRW to conserve land, prevent erosion and protect or improve surface water quality. Many of the practices that are being implemented have a benefit for groundwater. You can further target some of these efforts based on the information provided in this report to maximize the benefits by protecting groundwater. ([Table 9](#)) includes a column that identifies which agencies can assist with a specific action; the listed agencies typically have some type of program in place that you can leverage. The [Descriptions of Supporting Strategies](#) section of this report lists existing programs and resources for each of the suggested strategies.

Emphasize Protection

There is often a bias in groundwater management towards strategies that emphasize protection because of the cost and difficulty of remediating already-contaminated resources. In contrast to surface water bodies, groundwater:

- is difficult to access;
- cannot be observed, sampled or measured easily;
- travels slowly, often along complex pathways and through aquifer media that can absorb and store contaminants over long time periods; and
- is very difficult and expensive to treat if contaminated.

Timeframes associated with groundwater cleanup activities are often measured in decades and cost millions of dollars. Groundwater management strategies that emphasize prevention and protection are critical.

Although the tide is changing within water resources management in Minnesota, many funding streams and priorities are focused on restoration activities that can show measureable outcomes. Even though it is difficult to demonstrate 'improvements' from protection strategies, it is important to stress the need to take a balanced approach and protect groundwater resources.

Strategies and Actions for Nemadji River Watershed

This section provides a table of strategies and actions local partners in the NRW can take to restore and protect groundwater resources. Many of the proposed actions require the participation of a willing landowner to execute. Other actions reflect opportunities to manage land use through local controls. Many of the proposed strategies and actions align with strategies to protect surface waters.

Each action aligns with one or more supporting strategies and goals.

- **Goals** identify how an action helps restore and/or protect groundwater.
- **Supporting Strategies** are key approaches to achieving the goal.
- **Recommended Groundwater Actions** are specific actions prescribed to a specific county or HUC-10 within the watershed that will help achieve the goal and pertains to the supporting strategy.

[Figure 25](#) provides a visual representation of the relationship between goals, supporting strategies, and recommended groundwater actions. Note that each goal is supported by many supporting strategies, and each supporting strategy may have a variety of recommended groundwater actions.

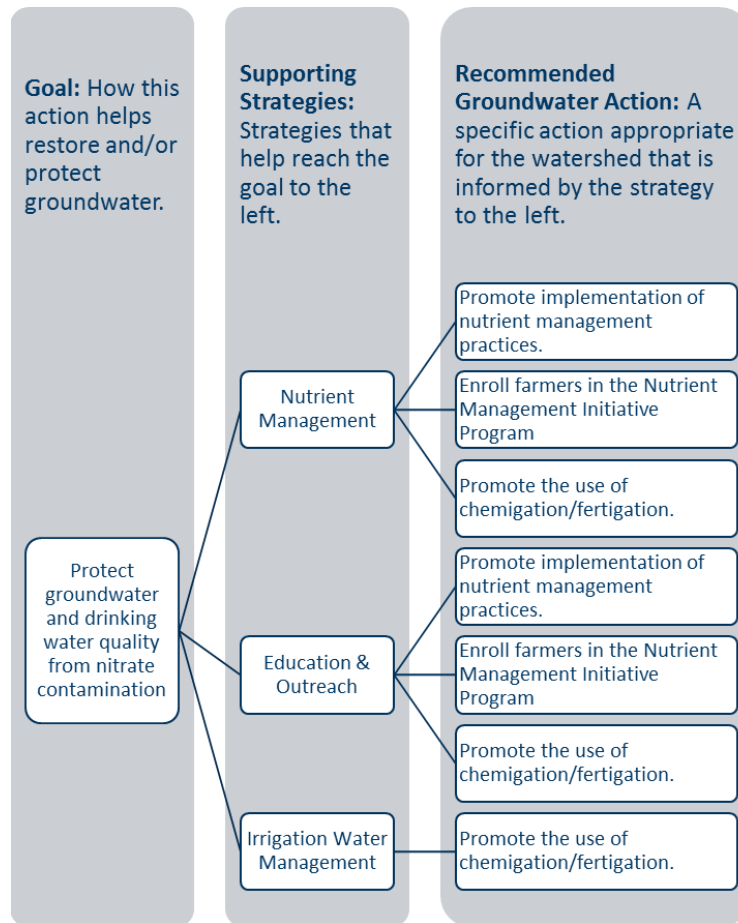


Figure 25: Visual representation of the relationship between goals, supporting strategies, and recommended groundwater action.

How to Use the Table of Actions and Strategies

The Table of Actions and Strategies ([Table 9](#)) is designed so that you can find actions and strategies related to whatever your priorities may be when it comes to restoring and protecting groundwater. There are a variety of columns to facilitate the following:

- finding actions for specific geographic areas (counties or HUC-10s);
- finding actions or strategies that would help achieve a specific goal;
- learning the additional benefits of implementing a specific action; and
- tips for determining where to target a specific action if you cannot implement the action in the entire recommended area.

The following list defines what each of the columns in [Table 9](#) represent:

- **Goal:** How the action in this row helps restore and/or protect groundwater. The goals have been sorted alphabetically as much as possible. Each goal identifies the main objective—such as whether it protects groundwater quality or sustains the amount of water available—and includes a keyword to explain how the goal is achieved. For example, a goal that is listed as ‘Protect Groundwater and Drinking Water Quality: Closed Landfills’ can be interpreted as: Protect groundwater and drinking water quality from landfill contamination.
- **Supporting Strategies:** Identifies and links you to general strategies that help accomplish the goal for the action in this row. Each strategy is hyperlinked to a section of the report that provides more information about the strategy and connects you with existing tools and programs that may assist you in implementing this strategy or implementing actions related to this strategy.

- **Recommended Groundwater Action:** A specific action you can take to help achieve the goal to the left in the row and is informed by the strategy to the left in the same row.
- **Target _____ Co.:** The 'X's' denote which counties should consider using the action described in the corresponding row. An 'X' denotes the action would be most beneficial for that county. The addition of the counties helps to further prioritize and target where recommended groundwater actions should be implemented, narrowing the focus from a larger subwatershed to a specific geographic area. For example, many of the subwatersheds identify the need to work with irrigators; by adding the additional filter of counties, you are able to eliminate specific counties that do not have irrigators, targeting where implementation should occur. It also works as a quick reference to identify groundwater actions specific to the county in which you work.
- **HUC-10s Involved:** This column denotes which HUC-10 subwatershed(s) within the NRW to consider using the action described in the corresponding row. There are 19 HUC-10s within the watershed. [Table 8](#) provides the name and the HUC-10 number assigned to each major watershed. [Figure 2](#) is a map of the HUC-10s.
- **Agencies that can assist**¹²: This column lists agencies that may be able to assist with implementing the strategy through existing programs or providing more information or technical assistance.
- **Tips for Targeting & Helpful Maps:** This column helps identify the areas that should be targeted for the specific action if it is not feasible to implement the action in all the recommended counties or HUC-8s. The column also includes links to maps within the GRAPS report that may be helpful in identifying which specific areas within a county or HUC-8 to target. The maps are listed in *italicized font*. You can click on the [blue text](#) that says the figure number for the map to hyperlink directly to the map being referenced.
- **Benefit: _____**¹³: This series of 'X' marks whether the corresponding action may have additional benefits. An 'X' denotes the action could create the described additional benefit.

Table 8: HUC 10 subwatersheds within the Nemadji River Watershed

HUC-10 Name	Reference Name in Implementation Table	HUC-10 Number
Black River	Black	0401030103
Middle Nemadji River	Middle Nemadji	0401030104
South Fork Nemadji River	South Fork	0401030101
Upper Nemadji River	Upper Nemadji	0401030102

¹² **BWSR**=Board of Soil and Water Resources; **FSA**=Farm Service Agency; **MDA**=Minnesota Department of Agriculture; **MDH**=Minnesota Department of Health; **MPCA**=Minnesota Pollution Control Agency; **NRCS**=Natural Resources Conservation Service; **UMN**=University of Minnesota Extension (*not a comprehensive list of agencies/partners*)

¹³ **Habitat**=Improve/Protect Habitat, including pollinators; **GWCF**=Improve/Protect Groundwater Connected Features; **Soil Health**=Improve/Protect Soil Health; **Erosion**=Control Erosion; **Carbon**=Carbon Sequestration; **Nutrient Runoff**=Control Nutrient Runoff, including pesticides (*The multiple benefits achieved are dependent on the placement and type of BMPs implemented; seed mixes planted; and other site conditions*).

Summary of Key Findings and Issues

Below is a summary of key groundwater quality and quantity findings found in the NRW. This summary can be used to help target groundwater actions during the 1W1P exercise.

Key Groundwater Quality Findings and Issues

- **Nitrate** – none of the 493 tested drinking water wells had levels at or above the SDWA standard of 10 mg/L.
 - There are no MDA ambient monitoring well in the NRW.
 - There are no MDA TTP areas in the NRW.
 - Two MPCA ambient monitoring wells detected nitrate and chloride, both at low levels.
- **Arsenic** – nearly six percent of the 17 tested wells had levels exceeding the SDWA standard of 10 µg/L. The EPA has set a goal of 0 µg/L for arsenic in drinking water because there is no safe level of arsenic in drinking water.
- **Pesticides** – there are no MDA monitoring wells within the watershed.
- **DWSMAs** – There are no community public water supply systems in the NRW.
- **Private wells** – there are 743 private drinking water wells with known locations ranging from 16 ft. to 591 ft. deep.
 - 100 percent of the nearly 3900 people living in the watershed obtain their drinking water from private wells.
- **Flood events** can threaten the safety and availability of drinking water by washing pathogens and chemical contamination into source aquifers. Carlton County lacks flood zone mapping, therefore the risk to flooding could not be assessed. Pine County has one well within the 100 year flood zone at highest risk, along with a limited number of wells in the 500 year flood zone that pose a low to moderate risk to flooding.
- **Animal feedlots** – there are 22 active feedlots in the watershed with the greatest concentration in Carlton County. Both Carlton and Pine County rely on the MPCA to administer the feedlot rule.
- **Row crop agriculture** accounts for 11 percent of land cover in the watershed. In areas with high pollution sensitivity, agricultural inputs can contaminate the underlying aquifer.
- **SSTS** are found throughout the watershed. Information reported by counties indicate Carlton County has the highest number of failing SSTS at two to three per 1,000 acres.
- **Contaminated sites** – there are seven active tank sites that could leak chemicals into the environment if not properly managed. The risk to groundwater is greatest in areas of high pollution sensitivity.

Key Groundwater Quantity Findings and Issues

- The northern half of the NRW depends primarily on buried sand and gravel aquifers for drinking water, while the southern half relies more on the bedrock sandstone aquifer. Permitted groundwater use reports suggest that overall use is sustainable.
- Groundwater accounts for approximately 100 percent of the total appropriated water use within the watershed.
 - There is one appropriation permit in the NRW for agriculture irrigation.
- There is one active groundwater-level monitoring well in the NRW. This surficial sand (water table) well has been measured since the 1970s and had no trend.
- Eleven lakes are present in the NRW with a watershed to lake ratio of 10 or less and are considered groundwater dependent lakes, susceptible to changing aquifer levels.

Table of Actions and Strategies to Restore and Protect Groundwater

Table 9: Actions and Strategies to Restore and Protect Groundwater

Goal	Supporting Strategy	Recommended Groundwater Actions	Target Carlton Co.	Target Pine Co.	HUC-10s Involved	Lead Agency that can assist	Tip(s) for Targeting & Helpful Maps	Benefit: Habitat	Benefit: GWCF	Benefit: Soil Health	Benefit: Erosion	Benefit: Carbon	Ben: Nutrient Runoff
Protect Private Well Users: Arsenic	<u>Education and Outreach</u>	<ul style="list-style-type: none"> Educate well users about the health risks of elevated arsenic levels in drinking water. Promote testing of private wells through education or cost share. Provide information from MDH about arsenic in Minnesota’s well water to private well users to help answer health related questions and information on arsenic removal. 	X	X	All	MDH Well MGMT	<p>Prioritize areas with a high density of private wells and areas with evidence of high levels of arsenic in private wells.</p> <p><i>Arsenic Map (Figure 13)</i></p> <p><i>Drinking Water Wells Map (Figure 10)</i></p>						
Protect Private Well Users: Well Testing	<u>Education and Outreach</u>	<p>Make information available to private well users about local drinking water quality and well testing. Host a well testing clinic or provide resources to well users to have their water tested for:</p> <ul style="list-style-type: none"> Coliform Bacteria (every year) Nitrate (every other year) Arsenic (at least once) Lead (at least once) Manganese (at least once) 	X	X	All	MDH Well MGMT	<p>Prioritize areas with a high density of private wells, high pollution sensitivity, karst geology and/or where there are known groundwater contaminants.</p> <p><i>Pollution Sensitivity Map (Figure 5)</i></p> <p><i>Pollution Sensitivity Wells (Figure 7)</i></p> <p><i>Arsenic Map (Figure 13)</i></p> <p><i>Drinking Water Wells Map (Figure 10)</i></p> <p><i>Nitrate Map (Figure 12)</i></p>						
Protect Private Well Users: Manage Wells Protect Groundwater and Drinking	<u>Education and Outreach</u>	Promote proper management of wells through MDH tools, such as the ‘Well Owners Handbook’ in landowner outreach efforts.	X	X	All	MDH Well MGMT	<p>Prioritize areas with a high density of private wells</p> <p><i>Drinking Water Wells Map (Figure 13)</i></p>						

Goal	Supporting Strategy	Recommended Groundwater Actions	Target Carlton Co.	Target Pine Co.	HUC-10s Involved	Lead Agency that can assist	Tip(s) for Targeting & Helpful Maps	Benefit: Habitat	Benefit: GWCF	Benefit: Soil Health	Benefit: Erosion	Benefit: Carbon	Ben: Nutrient Runoff
Water Quality: Manage Wells													
Protect Groundwater and Drinking Water Quality: Well Sealing	<u>Education and Outreach</u>	<ul style="list-style-type: none"> Provide cost share to well owners for sealing of unsealed, unused wells. Provide educational materials on well sealing. 	X	X	All	MDH Well MGMT	Prioritize areas with a high density of private wells and DWSMAs. <i>Drinking Water Wells Map (Figure 10)</i> <i>DWSMA Map (Figure 9)</i>						
Protect Groundwater and Drinking Water Quality: Well Inventory	<u>Land Use Planning and Management</u>	To understand water quality trends, establish a well inventory to record baseline data or changes in groundwater quality. An example of a successful model is the Southeast MN Domestic Well Network.	X	X	All	MDH Well MGMT	N/A						
Protect Groundwater and Drinking Water Quality: Leaky Tanks	<u>Contaminant Planning and Management</u> <u>Land Use Planning and Management</u>	<ul style="list-style-type: none"> Identify leaky and active tank sites in your area in comprehensive land use plans, zoning maps and ordinances. Identifying these locations will help assure drinking water and public health implications are considered when evaluating future growth or development near these sites. Contact the MPCA Tank Compliance and Assistance Program for current information and any concerns or changes to the groundwater area of concern when considering land use changes or developments near these areas. Request to be notified regarding any changes in the migration or movement of contaminants. 	X		Middle Nemadji Upper Nemadji	MPCA Tanks Program	Focus in areas with high pollution sensitivity, karst geology and highly vulnerable DWSMAs. <i>Pollution Sensitivity Map (Figure 5)</i> <i>Pollution Sensitivity Wells (Figure 7)</i> <i>DWSMA Map (Figure 9)</i> <i>Tank & Leak Site Map (Figure 16)</i>						

Goal	Supporting Strategy	Recommended Groundwater Actions	Target Carlton Co.	Target Pine Co.	HUC-10s Involved	Lead Agency that can assist	Tip(s) for Targeting & Helpful Maps	Benefit: Habitat	Benefit: GWCF	Benefit: Soil Health	Benefit: Erosion	Benefit: Carbon	Ben: Nutrient Runoff	
Protect Groundwater and Drinking Water Quality: Feedlots	<u>Contaminant Planning and Management</u>	Prioritize feedlot inspections, regardless of size, in areas of greatest risk to pollution, to minimize the loss of nitrate and harmful bacteria.	X	X	All	MPCA Feedlot Program	<p>Focus in areas with high pollution sensitivity, karst geology and highly vulnerable DWSMAs.</p> <p><i>Pollution Sensitivity Map (Figure 5)</i></p> <p><i>Pollution Sensitivity Wells (Figure 7)</i></p> <p><i>DWSMA Map (Figure 9)</i></p> <p><i>Active Feedlot Map (Figure 15)</i></p>							X
Protect Groundwater and Drinking Water Quality: Manure Management	<u>Education and Outreach</u> <u>Nutrient Management</u>	<ul style="list-style-type: none"> In delegated counties, all feedlots that apply manure in areas of high risk will conduct a Level 2 records review completed regardless of the size of facility. In delegated counties, conduct annual Level 3 review of manure acres in areas of high risk. Assist feedlot owners, especially sites with 300 or fewer animal units, in the development of a manure management plan. Host field days that promote; emergency response training, manure crediting, calibration of equipment, and the manure testing process. Evaluate local ordinances and revise to include manure timing guidelines to protect from nitrate loss. Follow the UMN Extension guidelines, including no summer application and fall application only after soil temperature is below 50 degrees. 	X	X	All	MPCA Feedlot Program	<p>Focus in areas with high pollutions sensitivity, karst geology and highly vulnerable DWSMAs.</p> <p><i>Pollution Sensitivity Map (Figure 5)</i></p> <p><i>Pollution Sensitivity Wells (Figure 7)</i></p> <p><i>DWSMA Map (Figure 9)</i></p> <p><i>Active Feedlot Map (Figure 15)</i></p>			X	X			X

Goal	Supporting Strategy	Recommended Groundwater Actions	Target Carlton Co.	Target Pine Co.	HUC-10s Involved	Lead Agency that can assist	Tip(s) for Targeting & Helpful Maps	Benefit: Habitat	Benefit: GWCF	Benefit: Soil Health	Benefit: Erosion	Benefit: Carbon	Ben: Nutrient Runoff
Protect Groundwater and Drinking Water Quality: Manure Management	<u>Education and Outreach</u>	Promote actions to prepare for field application of manure:	X	X	All	MPCA Feedlot Program	Focus in areas with high pollution sensitivity, karst geology and highly vulnerable DWSMAs. <i>Pollution Sensitivity Map (Figure 5)</i> <i>Pollution Sensitivity Wells (Figure 7)</i> <i>DWSMA Map (Figure 9)</i> <i>Active Feedlot Map (Figure 15)</i>			X	X		X
	<u>Nutrient Management</u>	<ul style="list-style-type: none"> Inspect equipment to ensure everything is functioning properly to avoid leaks or spills Get manure sampled and analyzed for nutrient availability Plan applications for each field Determine any setbacks needed in fields and mark locations of sensitive features to avoid Use the Minnesota Runoff Risk Advisory Forecast system tool to determine the best time to apply manure. Put together an emergency action plan that identifies leak and spill containment 											
	<u>Contaminant Planning and Management</u>												
Protect Groundwater and Drinking Water Quality: Nitrate	<u>Nutrient Management</u> <u>Education and Outreach</u>	Promote implementation of nutrient management practices to improve farm profitability and reduce nitrogen loss. Practices include: <ul style="list-style-type: none"> Improve nitrogen efficiency by practicing the 4 R's of nitrogen stewardship (right source, right rate, right timing, and right place) Adopt and use of the UMN 'Best Management Practices for Nitrogen use in Minnesota Properly credit nitrogen sources (soil/manure tests, past crops, & mineralization) Implement comprehensive nutrient management plans to improve nitrogen 	X		Middle Nemadji	MDA Pesticide & Fertilizer Division	Focus on areas with high pollution sensitivity, karst geology, highly vulnerable DWMSAs, and vulnerable townships identified by MDA through their township testing program. <i>Pollution Sensitivity Map (Figure 5)</i> <i>Pollution Sensitivity Wells (Figure 7)</i> <i>DWSMA Map (Figure 9)</i>						X

Goal	Supporting Strategy	Recommended Groundwater Actions	Target Carleton Co.	Target Pine Co.	HUC-10s Involved	Lead Agency that can assist	Tip(s) for Targeting & Helpful Maps	Benefit: Habitat	Benefit: GWCF	Benefit: Soil Health	Benefit: Erosion	Benefit: Carbon	Ben: Nutrient Runoff
		<ul style="list-style-type: none"> crediting, equipment calibration, and record keeping Spoon feed nitrogen to sync with plant growth through side dressing and split fertilizer application 											
Protect Groundwater and Drinking Water Quality: Nitrate	<u>Nutrient Management</u> <u>Education and Outreach</u>	Increase the number of farmers enrolled in the Nutrient Management Initiative Program to evaluate alternative nutrient management practices.	X		Middle Nemadji	MDA Pesticide & Fertilizer Division	Focus on areas with high pollution sensitivity, karst geology, highly vulnerable DWMSAs, and vulnerable townships identified by MDA through their township testing program. <i>Pollution Sensitivity Map (Figure 5)</i> <i>Pollution Sensitivity Wells (Figure 7)</i> <i>DWSMA Map (Figure 9)</i>						X
Protect Groundwater and Drinking Water Quality: Nitrate	<u>Nutrient Management</u> <u>Education and Outreach</u> <u>Cropland Management</u>	Identify programs and opportunities for growers to test and implement new nitrogen practices, innovative technology or cropping systems that protect groundwater quality that prevent or reduce nitrogen loss. (E.g. Cover Crops, Alternative Crops, Precision Ag / New Technologies, Nutrient Management Initiative, etc.)	X		Middle Nemadji	MDA Pesticide & Fertilizer Division	Focus on areas with high pollution sensitivity, karst geology, highly vulnerable DWMSAs, and vulnerable townships identified by MDA through their township testing program. <i>Pollution Sensitivity Map (Figure 5)</i> <i>Pollution Sensitivity Wells (Figure 7)</i> <i>DWSMA Map (Figure 9)</i>	X		X		X	X
Protect Groundwater and Drinking Water Quality: Nitrate	<u>Nutrient Management</u> <u>Education and Outreach</u>	Promote the adoption of cover crops for scavenging nutrients under row crops.	X		Middle Nemadji	MDA Pesticide & Fertilizer Division	Focus on areas with high pollution sensitivity, karst geology, irrigated row crops, highly vulnerable DWMSAs, and vulnerable townships identified by MDA through their township testing program.	X		X	X	X	X

Goal	Supporting Strategy	Recommended Groundwater Actions	Target Carleton Co.	Target Pine Co.	HUC-10s Involved	Lead Agency that can assist	Tip(s) for Targeting & Helpful Maps	Benefit: Habitat	Benefit: GWCF	Benefit: Soil Health	Benefit: Erosion	Benefit: Carbon	Ben: Nutrient Runoff
							<i>Pollution Sensitivity Map (Figure 5)</i> <i>Pollution Sensitivity Wells (Figure 7)</i> <i>DWSMA Map (Figure 9)</i> <i>Drinking Water Wells Map (Figure 10)</i>						
Protect Groundwater and Drinking Water Quality: Nitrate Groundwater Sustainability: Water Conservation	<u>Education and Outreach</u> <u>Nutrient Management</u> <u>Cropland Management</u>	Promote the benefits of farming using soil health principles that increase soil moisture holding capacity, organic matter, and nutrient cycling.	X		Middle Nemadji	NRCS Field Office	Focus on areas with high pollution sensitivity, karst geology, highly vulnerable DWMSAs, and vulnerable townships identified by MDA through their township testing program. <i>Pollution Sensitivity Map (Figure 5)</i> <i>Pollution Sensitivity Wells (Figure 7)</i> <i>DWSMA Map (Figure 9)</i> <i>Nitrate in Wells Maps (Figure 12)</i>			X	X	X	X
Protect Groundwater and Drinking Water Quality: Nitrate Protect Groundwater and Drinking Water Quality: Pesticides	<u>Education and Outreach</u> <u>Cropland Management</u> <u>Integrated Pest Management</u>	Promote the benefits of crop diversity and rotation, which include high yields for each crop in the rotation, pest and weed control, and enhanced soil fertility.	X		Middle Nemadji	MDA Pesticide & Fertilizer Division	Focus on areas with high pollution sensitivity, karst geology, highly vulnerable DWMSAs, and vulnerable townships identified by MDA through their township testing program. <i>Pollution Sensitivity Map (Figure 5)</i> <i>Pollution Sensitivity Wells (Figure 7)</i> <i>DWSMA Map (Figure 9)</i> <i>Nitrate in Wells Maps (Figure 12)</i>		X	X	X	X	X
Protect Groundwater and Drinking	<u>Education and Outreach</u>	Promote to farmers and area businesses the Agricultural and Non-Agricultural Waste	X	X	All	MDA Pesticide & Fertilizer Division	Focus in areas of pesticide detection in MDA's monitoring wells, along with areas of high pollution sensitivity,						

Goal	Supporting Strategy	Recommended Groundwater Actions	Target Carlton Co.	Target Pine Co.	HUC-10s Involved	Lead Agency that can assist	Tip(s) for Targeting & Helpful Maps	Benefit: Habitat	Benefit: GWCF	Benefit: Soil Health	Benefit: Erosion	Benefit: Carbon	Ben: Nutrient Runoff
Water Quality: Pesticides		<ul style="list-style-type: none"> Pesticide Collection Program to dispose of unwanted and unusable pesticides. 					karst geology, highly vulnerable DWMSAs, and vulnerable townships identified by MDA through their Township Testing program. <i>Pollution Sensitivity Map (Figure 5)</i> <i>Pollution Sensitivity Wells (Figure 7)</i> <i>DWSMA Map (Figure 9)</i>						
Protect Groundwater and Drinking Water Quality: SSTS	<u>SSTS Management</u>	<ul style="list-style-type: none"> Enforce state and locally adopted SSTS ordinances for the protection of groundwater and drinking water sources. Evaluate existing SSTS ordinances and identify opportunities to enhance groundwater protection. Activities may include adding a Point of Sale requirement to trigger a SSTS inspection during real estate transactions. Improve SSTS records by obtaining information on treatment system; age, type and function to understand potential risks to groundwater. 	X	X	All	MPCA SSTS Field Staff	Focus in areas with high pollution sensitivity, karst geology, highly vulnerable DWMSAs, and areas with a density of SSTS. You can use the Well Density Map as an imperfect surrogate for SSTS density. <i>Drinking Water Wells Map (Figure 13)</i> <i>Pollution Sensitivity Map (Figure 5)</i> <i>Pollution Sensitivity Wells (Figure 7)</i> <i>DWSMA Map (Figure 9)</i>						
Protect Groundwater and Drinking Water Quality: SSTS	<u>Education and Outreach</u> <u>SSTS Management</u>	Educate citizens about SSTS including: <ul style="list-style-type: none"> The basic principles of how a septic system works How to operate the system efficiently and effectively Risks to human health and the environment Financial options to repair or replace failing or non-compliant system 	X	X	All	MPCA SSTS Field Staff	Focus in areas with high pollution sensitivity, karst geology, highly vulnerable DWMSAs, and areas with a density of SSTS. You can use the Well Density Map as an imperfect surrogate for SSTS density. <i>Drinking Water Wells Map (Figure 13)</i> <i>Pollution Sensitivity Map (Figure 5)</i>						

Goal	Supporting Strategy	Recommended Groundwater Actions	Target Carlton Co.	Target Pine Co.	HUC-10s Involved	Lead Agency that can assist	Tip(s) for Targeting & Helpful Maps	Benefit: Habitat	Benefit: GWCF	Benefit: Soil Health	Benefit: Erosion	Benefit: Carbon	Ben: Nutrient Runoff
							<i>Pollution Sensitivity Wells (Figure 7)</i> <i>DWSMA Map (Figure 9)</i>						
Protect Groundwater and Drinking Water Quality: SSTS	<u>Education and Outreach</u> <u>SSTS Management</u>	Host local SSTS training and workshops for area contractors and citizens regarding SSTS technology, compliance, and maintenance.	X	X	All	MPCA SSTS Field Staff	Focus in areas with high pollution sensitivity, karst geology, highly vulnerable DWSMAs, and areas with a density of SSTS. You can use the Well Density Map as an imperfect surrogate for SSTS density. <i>Drinking Water Wells Map (Figure 13)</i> <i>Pollution Sensitivity Map (Figure 5)</i> <i>Pollution Sensitivity Wells (Figure 7)</i> <i>DWSMA Map (Figure 9)</i>						
Protect Groundwater and Drinking Water Quality: Wellhead Protection (WHP)	<u>Education and Outreach</u> <u>Cropland Management</u> <u>Land Use Planning and Management</u>	Serve on WHP planning teams to assist public water suppliers with planning and implementation activities to address land use planning concerns.	X		Middle Nemadji	MDH SWP Unit	<i>Wellhead Protection Plan Development Status (Figure 9)</i> <i>DWSMA Map (Figure 9)</i>						
Protect Groundwater and Drinking Water Quality: Wellhead Protection	<u>Land Use Planning and Management</u>	Integrate WHP plan strategies into local plans, such as the 1W1P and land use plans.	X		Middle Nemadji	MDH SWP Unit	<i>DWSMA Map (Figure 9)</i>						

Goal	Supporting Strategy	Recommended Groundwater Actions	Target Carlton Co.	Target Pine Co.	HUC-10s Involved	Lead Agency that can assist	Tip(s) for Targeting & Helpful Maps	Benefit: Habitat	Benefit: GWCF	Benefit: Soil Health	Benefit: Erosion	Benefit: Carbon	Ben: Nutrient Runoff
Protect Groundwater and Drinking Water: Household Hazardous Waste (HHW)	Education and Outreach Land Use Planning and Management	<ul style="list-style-type: none"> Educate the public about the risks of improperly disposing of HHW and promote community-supported collection sites. Make disposal of HHW easy for the public by expanding collection sites through mobile units by stopping in different communities throughout the summer for free drop off. Promote other recycling options of various products at area businesses throughout the year. 	X	X	All	MPCA Hazardous Waste Program	<p>Focus on areas with high pollution sensitivity, karst geology, and highly vulnerable DWMSAs</p> <p><i>Pollution Sensitivity Map (Figure 5)</i></p> <p><i>Pollution Sensitivity Wells (Figure 7)</i></p> <p><i>DWSMA Map (Figure 9)</i></p>						
Protect Groundwater and Drinking Water: Pharmaceuticals	Education and Outreach	Keep unused/unwanted medications out of drinking water supplies by educating the public about available safe and secure drop box locations at law enforcement facilities and pharmacies.	X	X	All	MPCA Hazardous Waste Program	<p>Focus on areas with high pollution sensitivity, karst geology, and highly vulnerable DWMSAs</p> <p><i>Pollution Sensitivity Map (Figure 5)</i></p> <p><i>Pollution Sensitivity Wells (Figure 7)</i></p> <p><i>DWSMA Map (Figure 9)</i></p>						
Protect Groundwater and Drinking Water: Contaminants of Emerging Concern (CEC)	Education and Outreach	Enhance Minnesotans' understanding of CEC's by communicating the health impacts and exposure potential of emerging contaminants in drinking water. Outreach and Education Grants are available through the MDH CEC Initiative. See Outreach and Education Grants (www.health.state.mn.us/divs/eh/risk/guidance/dwec/outreachproj.html) for opportunities.	X	X	All	MDH CEC Program	<p>Focus on areas with high pollution sensitivity, karst geology and highly vulnerable DWMSAs</p> <p><i>Pollution Sensitivity Map (Figure 5)</i></p> <p><i>Pollution Sensitivity Wells (Figure 7)</i></p> <p><i>DWSMA Map (Figure 9)</i></p>						

Goal	Supporting Strategy	Recommended Groundwater Actions	Target Carlton Co.	Target Pine Co.	HUC-10s Involved	Lead Agency that can assist	Tip(s) for Targeting & Helpful Maps	Benefit: Habitat	Benefit: GWCF	Benefit: Soil Health	Benefit: Erosion	Benefit: Carbon	Ben: Nutrient Runoff
Protect Groundwater and Drinking Water	<u>Education and Outreach</u>	Educate the public and decision makers about the hydrologic connectivity of groundwater and surface water and how this influences the vulnerability of drinking water resources.	X	X	All	DNR Ecological & Water Resources	Focus in areas with high pollution sensitivity and karst geology. <i>Pollution Sensitivity Map (Figure 5)</i> <i>Pollution Sensitivity Wells (Figure 7)</i>						
Protect Groundwater and Drinking Water Quality Water Sustainability	<u>Education and Outreach</u>	Develop a 'drinking water protection' page on the SWCD or county website or other communication tools that can be used to share information with citizens on what they can do to protect both public and private sources of drinking water. Include information about the connection between surface and groundwater, well sealing and water conservation. Dakota County's webpage <u>Water Quality</u> (https://www.co.dakota.mn.us/Environment/WaterQuality/WellsDrinkingWater/Pages/default.aspx) is a good example.	X	X	All	MDH Well MGMT & SWP Unit	N/A						
Protect Groundwater and Drinking Water Quality Water Sustainability	<u>Land Use Planning and Management</u>	Develop ordinances, overlay districts, performance standards, etc. to further protect drinking water and groundwater connected features from future land use impacts for their long-term sustainability and use.	X	X	All	MN Assoc. of Counties	Focus in areas with high pollution sensitivity, karst geology, highly vulnerable DWSMAs and groundwater connected natural features <i>Pollution Sensitivity Map (Figure 5)</i> <i>Pollution Sensitivity Wells (Figure 7)</i> <i>DWSMA Map (Figure 9)</i>		X				
Protect Groundwater	<u>Land Use Planning and Management</u>	Incorporate basic groundwater and drinking water information into local comprehensive plans and ordinances including:	X	X	All	MDH SWP Unit	<i>Pollution Sensitivity Map (Figure 5)</i> <i>Pollution Sensitivity Wells (Figure 7)</i>						

Goal	Supporting Strategy	Recommended Groundwater Actions	Target Carlton Co.	Target Pine Co.	HUC-10s Involved	Lead Agency that can assist	Tip(s) for Targeting & Helpful Maps	Benefit: Habitat	Benefit: GWCF	Benefit: Soil Health	Benefit: Erosion	Benefit: Carbon	Ben: Nutrient Runoff
and Drinking Water Quality Water Sustainability		<ul style="list-style-type: none"> Local geology and aquifer information The sources of drinking water and the pollution sensitivity of public and private wells Maps of state approved WHP areas Groundwater dependent natural features Contaminant areas of concern Other local information needed to consider and protect groundwater and drinking water resources in local land use planning decisions 					<p>DWSMA Map (Figure 9)</p> <p>Tank & Leak Site Map (Figure 24)</p>						
Groundwater Sustainability: Water Conservation	Land Use Planning and Management	Plan for future population growth by reflecting drinking water quality and quantity issues in land use plans. Use planning tools such as setbacks, performance standards, conditional use permits, zoning districts, etc. that protect aquifer health and yield.	X	X	All	MN Assoc. of Counties	<p>Prioritize highly vulnerable DWSMAs and areas of high water use:</p> <p>DWSMA Map (Figure 9)</p> <p>Monitoring Wells/Pumping (Figure 21)</p>		X				
Protect Groundwater and Drinking Water Quality	Land Use Planning and Management	Conduct a survey of property owners within the flood plain to identify unused/unsealed wells. Seal those wells identified to prevent contamination of the aquifer.		X	Black River South Fork Nemadji Upper Nemadji	MDH Well MGMT	<p>Prioritize areas of greatest risk to flooding:</p> <p>Drinking Water Wells and Flood Risk (Figure 11)</p>						
Protect Groundwater and Drinking Water Quality	Land Use Planning and Management	Request flooded well test kits from MDH Well Management to distribute to private well owners after a flood event.	X	X	All	MDH Well MGMT	<p>Prioritize areas impacted by recent flooding that may be at risk to contamination:</p> <p>Drinking Water Wells and Flood Risk (Figure 11)</p>						

Goal	Supporting Strategy	Recommended Groundwater Actions	Target Carlton Co.	Target Pine Co.	HUC-10s Involved	Lead Agency that can assist	Tip(s) for Targeting & Helpful Maps	Benefit: Habitat	Benefit: GWCF	Benefit: Soil Health	Benefit: Erosion	Benefit: Carbon	Ben: Nutrient Runoff
Protect Groundwater and Drinking Water Quality Water Sustainability: Recharge	<u>Conservation Easements</u>	Enroll private lands in land acquisition programs or conservation easements. Programs may include: Continuous CRP, RIM Reserve for wellhead protection.	X	X	All	BWSR	Prioritize areas of high pollution sensitivity, karst geology and highly vulnerable DWSMAs. Target areas of high water use, known groundwater connected natural features. Examine areas where you can expand on existing easements and protected lands to increase protections. <i>Pollution Sensitivity Map (Figure 5)</i> <i>Pollution Sensitivity Wells (Figure 7)</i> <i>DWSMA Map (Figure 9)</i> <i>Monitoring Wells/Pumping (Figure 21)</i>	X	X	X	X	X	X
Protect Groundwater and Drinking Water Quality: Stormwater Management Water Sustainability: Recharge	<u>Land Use Planning and Management</u> <u>Education and Outreach</u>	Manage stormwater runoff to minimize adverse impacts to groundwater. Refer to the Minnesota Stormwater Manual for infiltration guidance on project sites located in wellhead protection areas.	X	X	All	MPCA MS4 Program	Prioritize MS4 communities, target highly sensitive areas, karst geology and highly vulnerable DWSMAs. <i>Pollution Sensitivity Map (Figure 5)</i> <i>DWSMA Map (Figure 9)</i>	X	X		X		X
Groundwater Sustainability: Water Conservation	<u>Education and Outreach</u>	Provide education on water conservation practices that can be adopted in people's homes and businesses. Use the Met Council's Water Conservation Toolbox.	X	X	All	DNR Ecological & Water Resources	N/A		X				

Goal	Supporting Strategy	Recommended Groundwater Actions	Target Carleton Co.	Target Pine Co.	HUC-10s Involved	Lead Agency that can assist	Tip(s) for Targeting & Helpful Maps	Benefit: Habitat	Benefit: GWCF	Benefit: Soil Health	Benefit: Erosion	Benefit: Carbon	Ben: Nutrient Runoff
Protect Groundwater and Drinking Water Quality: Forestry	Land Use Planning and Management	Promote forest land long-term easements, and forest management on private lands, utilizing local, state, and federal technical and financial assistance options.	X	X	All	DNR Ecological & Water Resources	Prioritize private lands with high sensitivity and karst geology, as well as vulnerable DWSMAs. <i>Pollution Sensitivity Map (Figure 5)</i> <i>DWSMA Map (Figure 9)</i>	X	X	X	X	X	X
Protect Groundwater and Drinking Water Quality: Forestry	Land Use Planning and Management	Promote forestland cover in vulnerable DWSMAs in local comprehensive plans and ordinances, and in comprehensive watershed management plans such as the County Local Water Plan, or 1W1P for drinking water protection.	X	X	All	DNR Ecological & Water Resources	Prioritize private lands with high sensitivity and karst geology, as well as vulnerable DWSMAs. <i>Pollution Sensitivity Map (Figure 5)</i> <i>DWSMA Map (Figure 9)</i>	X	X	X	X	X	X
Protect Groundwater and Drinking Water Quality: Forestry	Land Use Planning and Management	Inform landowners who own 20 acres or more of forested land cover that they are eligible to have private forest management plans prepared for their forested property.	X	X	All	DNR Ecological & Water Resources	Prioritize private lands with high sensitivity and karst geology, as well as vulnerable DWSMAs. <i>Pollution Sensitivity Map (Figure 5)</i> <i>DWSMA Map (Figure 9)</i>	X	X	X	X	X	X
Protect Groundwater and Drinking Water Quality: Forestry	Land Use Planning and Management	Assist private forest landowners to implement a DNR certified and registered private forest management plan.	X	X	All	DNR Ecological & Water Resources	Prioritize private lands with high sensitivity and karst geology, as well as vulnerable DWSMAs. <i>Pollution Sensitivity Map (Figure 5)</i> <i>DWSMA Map (Figure 9)</i>	X	X	X	X	X	X
Protect Groundwater and Drinking Water Quality: Forestry	Land Use Planning and Management	Explore grant opportunities for protecting or establishing forested lands in DWSMAs.	X	X	All	DNR Ecological & Water Resources	Prioritize private lands with high sensitivity and karst geology, as well as vulnerable DWSMAs. <i>Pollution Sensitivity Map (Figure 5)</i>	X	X	X	X	X	X

Goal	Supporting Strategy	Recommended Groundwater Actions	Target Carlton Co.	Target Pine Co.	HUC-10s Involved	Lead Agency that can assist	Tip(s) for Targeting & Helpful Maps	Benefit: Habitat	Benefit: GWCF	Benefit: Soil Health	Benefit: Erosion	Benefit: Carbon	Ben: Nutrient Runoff
							<i>DWSMA Map (Figure 9)</i>						
Protect Groundwater and Drinking Water Quality: Forestry	<u>Education and Outreach</u>	Promote education and awareness of the benefits of forests on groundwater and drinking water.	X	X	All	DNR Ecological & Water Resources	Prioritize private lands with high sensitivity and karst geology, as well as vulnerable DWSMAs. <i>Pollution Sensitivity Map (Figure 5)</i> <i>DWSMA Map (Figure 9)</i>	X	X	X	X	X	X

Descriptions of Supporting Strategies

Conservation Easements

Conservation easements are a legal agreement between a landowner and a land trust or government agency that permanently limits uses of the land in order to protect its conservation values. Easements allow landowners to continue to own and use their land. They can also sell it or pass it on to heirs. Maintaining and expanding set-aside acres, including areas in publicly supported conservation programs (like CRP) from being converted to high intensity land uses, such as row crop agriculture, will help protect groundwater quantity and quality.

Existing Programs and Resources

- MDA [Conservation Reserve Program](http://www.mda.state.mn.us/protecting/conservation/programs/ccrp.aspx) (<http://www.mda.state.mn.us/protecting/conservation/programs/ccrp.aspx>): A voluntary program designed to help farmers restore and protect environmentally sensitive land.
- BWSR [Conservation Reserve Enhancement Program - CREP](http://www.bwsr.state.mn.us/crep/index.html) (<http://www.bwsr.state.mn.us/crep/index.html>): This project is a federal, state and local partnership and will voluntarily retire environmentally sensitive land using the nationally-recognized Reinvest in Minnesota (RIM) Reserve programs. There are no RIM easements in the NRW.

Contaminant Planning and Management

Protect groundwater and drinking water supplies from contaminant releases in the environment through land use planning, ordinances, and collaboration with state regulatory agencies.

Existing Programs and Resources

- MDA [What's in My Neighborhood? Agricultural Interactive Mapping](http://www.mda.state.mn.us/chemicals/spills/incidentresponse/neighborhood.aspx) (www.mda.state.mn.us/chemicals/spills/incidentresponse/neighborhood.aspx): A tool that tracks and maps spills of agricultural chemicals and sites contaminated with agricultural chemicals.
- MPCA [Manure Management](https://www.pca.state.mn.us/quick-links/feedlot-nutrient-and-manure-management) (<https://www.pca.state.mn.us/quick-links/feedlot-nutrient-and-manure-management>): Resources such as fact sheets, guidelines, computer tools and forms for feedlot nutrient and manure management.
- MPCA Tank Compliance and Assistance Program--[Storage Tanks](https://www.pca.state.mn.us/waste/storage-tanks) (<https://www.pca.state.mn.us/waste/storage-tanks>): A program that provides information and assistance to tank owners and others regarding technical standards required of all regulated underground storage tanks and aboveground storage tank systems.
- MPCA [Closed Landfill Program](https://www.pca.state.mn.us/waste/closed-landfill-program) (<https://www.pca.state.mn.us/waste/closed-landfill-program>): A voluntary program to properly close, monitor, and maintain Minnesota's closed municipal sanitary landfills.
- MPCA [Feedlots](https://www.pca.state.mn.us/quick-links/feedlot-program) (<https://www.pca.state.mn.us/quick-links/feedlot-program>): Information about feedlot rules, permits, and management.
- MPCA [What's in My Neighborhood](https://www.pca.state.mn.us/data/whats-my-neighborhood) (<https://www.pca.state.mn.us/data/whats-my-neighborhood>): An online tool for searching information about contaminated sites and facilities all around Minnesota

- UMN Extension [Manure Management in Minnesota](http://www.extension.umn.edu/agriculture/manure-management-and-air-quality/manure-management-basics/manure-management-in-minnesota/) (www.extension.umn.edu/agriculture/manure-management-and-air-quality/manure-management-basics/manure-management-in-minnesota/): Information about manure characteristics, application, and economics.
- USDA & NRCS [Manure Management in Minnesota](http://www.nrcs.usda.gov/wps/portal/nrcs/detail/mn/technical/ecoscience/nutrient/?cid=nrcs142p2_023688) (www.nrcs.usda.gov/wps/portal/nrcs/detail/mn/technical/ecoscience/nutrient/?cid=nrcs142p2_023688): Basic manure management information.
- MDH [Contaminants of Emerging Concern](http://www.health.state.mn.us/cec) (www.health.state.mn.us/cec): A program that investigates and communicates the health and exposure potential of contaminants of emerging concern (CECs) in drinking water.

Cropland Management

Voluntary practices to manage resource concerns while minimizing environmental loss. Practices may include conservation tillage, cover crops, soil health and other agricultural BMPs.

Existing Programs and Resources

- MDA [The Agricultural BMP Handbook for Minnesota](http://www.eorinc.com/documents/AG-BMPHandbookforMN_09_2012.pdf) (www.eorinc.com/documents/AG-BMPHandbookforMN_09_2012.pdf): A literature review of empirical research on the effectiveness of 30 conservation practices.
- NRCS [Conservation Stewardship Program](http://www.nrcs.usda.gov/wps/portal/nrcs/main/mn/programs/financial/csp/) (www.nrcs.usda.gov/wps/portal/nrcs/main/mn/programs/financial/csp/): A voluntary conservation program that encourages producers to address resource concerns in a comprehensive manner.
- NRCS [Environmental Quality Incentives Program](https://www.nrcs.usda.gov/wps/portal/nrcs/main/mn/programs/financial/eqip/) (https://www.nrcs.usda.gov/wps/portal/nrcs/main/mn/programs/financial/eqip/): A program that provides financial and technical assistance to agricultural producers so they can implement structural and management conservation practices that optimize environmental benefits on working agricultural land.
- NRCS [Cover Crops](http://www.nrcs.usda.gov/wps/portal/nrcs/detail/mn/technical/?cid=nrcs142p2_023671) (www.nrcs.usda.gov/wps/portal/nrcs/detail/mn/technical/?cid=nrcs142p2_023671): Provides information, fact sheets, and tools about cover crops.
- NRCS [Soil Health](https://www.nrcs.usda.gov/wps/portal/nrcs/main/mn/soils/health/) (https://www.nrcs.usda.gov/wps/portal/nrcs/main/mn/soils/health/): Provides information about the basics and benefits of soil health.
- [Midwest Cover Crop Council](http://mccc.msu.edu/statesprovince/minnesota/) (mccc.msu.edu/statesprovince/minnesota/): Provides resources to help with technical support and answer questions from a local perspective at no cost.
- MDA [Minnesota Agricultural Water Quality Certification Program](http://www.mda.state.mn.us/awqcp) (www.mda.state.mn.us/awqcp): A voluntary program for farmers to implement conservation practices to protect water quality.

Education and Outreach

Educate landowners, private well users, and other stakeholders about how their actions impact groundwater quality and quantity. Provide information about potential health risks related to groundwater quality. Identify actions individuals, households, and partner agencies can take to sustain groundwater and protect or improve drinking water quality. Some ideas include managing household hazardous waste, maintaining household septic systems, and household water conservation measures.

For educational materials and programs related to a specific topic, go to the strategy about that topic. For example, go to ‘nutrient management’ to learn more about potential education opportunities regarding reducing nitrogen use. The list below provides some additional tools that may be helpful.

Existing Programs and Resources

- Metropolitan Council [Water Conservation Toolbox](https://metro council.org/Wastewater-Water/Planning/Water-Supply-Planning/Guidance-Planning-Tools/Water-Conservation/Toolbox.aspx) (https://metro council.org/Wastewater-Water/Planning/Water-Supply-Planning/Guidance-Planning-Tools/Water-Conservation/Toolbox.aspx): Information about how residents and businesses, suppliers, learners, and communities can conserve water.
- Minnesota Rural Water Association [Source Water Protection Resources](http://www.mrwa.com/sourcewater.html) (www.mrwa.com/sourcewater.html): Resources to help public water suppliers develop plans to use local community resources to protect drinking water quality.
- MPCA [Waste](https://www.pca.state.mn.us/waste) (https://www.pca.state.mn.us/waste): Information about managing waste, recycling, composting, and preventing waste and pollution.
- MPCA [Manual for Turfgrass Maintenance with Reduced Environmental Impacts](https://www.pca.state.mn.us/sites/default/files/p-tr1-04.pdf) (https://www.pca.state.mn.us/sites/default/files/p-tr1-04.pdf): Practical advice for those who manage turfgrass (golf courses and athletic fields excluded).
- MDH [Wells Laws and Rules](http://www.health.state.mn.us/divs/eh/wells/rules/index.html) (www.health.state.mn.us/divs/eh/wells/rules/index.html): Minnesota State Well Code (MR 4725.0050 – 4725.7605).
- MDH [Wells and Borings—Well Management Program](http://www.health.state.mn.us/divs/eh/wells/index.html) (www.health.state.mn.us/divs/eh/wells/index.html): Information about proper well construction, maintenance, testing, and sealing.
- MDH [Wellowner’s Handbook](http://www.health.state.mn.us/divs/eh/wells/construction/handbook.pdf) (www.health.state.mn.us/divs/eh/wells/construction/handbook.pdf): A consumer’s guide to water wells in Minnesota.
- MDH [Arsenic in Minnesota’s Well Water](http://www.health.state.mn.us/divs/eh/wells/waterquality/arsenic.html) (www.health.state.mn.us/divs/eh/wells/waterquality/arsenic.html): Information about arsenic in Minnesota.
- MDH [Water Treatment Units for Arsenic Reduction](http://www.health.state.mn.us/divs/eh/wells/waterquality/arsenic_treat.pdf) (http://www.health.state.mn.us/divs/eh/wells/waterquality/arsenic_treat.pdf)
- MDA [Waste Pesticide Collection Program](https://www.mda.state.mn.us/chemicals/spills/wastepesticides.aspx) (https://www.mda.state.mn.us/chemicals/spills/wastepesticides.aspx): Information about the safe disposal of unwanted and unusable pesticides from farms and area businesses.
- MPCA [Managing Unwanted Medications](https://www.pca.state.mn.us/living-green/managing-unwanted-medications) (https://www.pca.state.mn.us/living-green/managing-unwanted-medications): Information about the safe disposal of unwanted or unused medications from households.

Integrated Pest Management

Integrated Pest Management (IPM) is a balanced approach to pest management which incorporates the many aspects of plant health care/crop protection in ways that mitigate harmful environmental impacts and protect human health. Some of the IPM program activities include generating and distributing IPM information for growers, producers, land managers, schools, and the general public. Information should help them make alternative choices in their pest management decisions.

Existing Programs and Resources

- MDA [Integrated Pest Management Program](https://www.mda.state.mn.us/plants/pestmanagement/ipm.aspx) (https://www.mda.state.mn.us/plants/pestmanagement/ipm.aspx): A program that develops

and implements statewide strategies for the increased use of IPM on private and state managed lands.

- MDA [Water Quality BMPs for Agricultural Pesticides](http://www.mda.state.mn.us/protecting/bmps/herbicidebmps.aspx) (www.mda.state.mn.us/protecting/bmps/herbicidebmps.aspx): Information to address pesticide use and water resource protection.

Irrigation Water Management

The process of determining and controlling the volume, frequency, and application rate of irrigation water in a planned, efficient manner (NRCS Codes 442 & 449).

Existing Programs and Resources

- MDA [Irrigation Management](http://www.mda.state.mn.us/protecting/conservation/practices/irrigation.aspx) (www.mda.state.mn.us/protecting/conservation/practices/irrigation.aspx): Provides information about irrigation management, similar practices, guidance from NRCS, and links to additional resources.
- DNR [Minnesota Water Use Data](http://www.dnr.state.mn.us/waters/watermgmt_section/appropriations/wateruse.html) (www.dnr.state.mn.us/waters/watermgmt_section/appropriations/wateruse.html): Data gathered from permit holders who report the volume of water used each year.

Land Use Planning and Management

This broad strategy encompasses many different concepts including regulations, ordinances, BMP implementation, conservation measures, and education to protect groundwater levels, quality, and contributions to groundwater-dependent features.

Land use planning focuses on the application of city or county government planning and regulations to restore and protect groundwater and groundwater levels. Local planning and regulations can help restrict land uses in groundwater sensitive areas, areas of high aquifer sensitivity, or regions of limited water supply to prevent conflict.

Land management implements voluntary practices that manage resource concerns while minimizing environmental loss. This may include the efficient use of groundwater through conservation measures and use of emerging technology to increase water conservation at the field or local level.

Existing Programs and Resources

- [Association of Minnesota Counties](http://www.mncounties.org/) (www.mncounties.org/): A voluntary, non-partisan statewide organization that helps provide effective county governance to Minnesotans. The Association works closely with the legislative and administrative branches of government in seeing that legislation and policies favorable to counties are enacted.
- DNR [Water Supply Plans](http://www.dnr.state.mn.us/waters/watermgmt_section/appropriations/eandc_plan.html) (www.dnr.state.mn.us/waters/watermgmt_section/appropriations/eandc_plan.html): Provides information about Minnesota public water supply plans.
- DNR [MPARS \(MNDNR Permitting and Reporting System\)](http://www.dnr.state.mn.us/mpars/index.html) (www.dnr.state.mn.us/mpars/index.html): DNR is the permitting authority for high capacity water use.
- DNR [Sustainability of Minnesota's Groundwaters](http://www.dnr.state.mn.us/waters/groundwater_section/sustainability/index.html) (www.dnr.state.mn.us/waters/groundwater_section/sustainability/index.html): Resources to help promote the sustainable use of groundwater, including a statement of issues and needs, as well as factsheets.

- DNR [Water Conservation](http://www.dnr.state.mn.us/waters/watermgmt_section/appropriations/conservation.html) (www.dnr.state.mn.us/waters/watermgmt_section/appropriations/conservation.html): Provides tips and tools for promoting water conservation at home, public water supply systems, and other environments.
- [League of Minnesota Cities](https://www.lmc.org) (https://www.lmc.org): Promotes excellence in local government through effective advocacy, expert analysis, and trusted guidance for all Minnesota cities.
- MPCA [Condition Groundwater Monitoring](https://www.pca.state.mn.us/water/condition-groundwater-monitoring) (https://www.pca.state.mn.us/water/condition-groundwater-monitoring).
- MPCA [Stormwater and Wellhead Protection](http://stormwater.pca.state.mn.us/index.php/Stormwater_and_wellhead_protection) (stormwater.pca.state.mn.us/index.php/Stormwater_and_wellhead_protection): Guidance and recommendations for determining the appropriateness of infiltrating stormwater in a Drinking Water Supply Management Area.
- MPCA [Minnesota Stormwater Manual](http://stormwater.pca.state.mn.us/index.php/Main_Page) (stormwater.pca.state.mn.us/index.php/Main_Page): A manual to help the everyday user better manage stormwater.
- MPCA [Enhancing Stormwater Management in Minnesota](https://www.pca.state.mn.us/water/enhancing-stormwater-management-minnesota) (https://www.pca.state.mn.us/water/enhancing-stormwater-management-minnesota): Information about standards and tools for minimal impact designs for stormwater management.
- MPCA [Stormwater](https://www.pca.state.mn.us/water/stormwater) (https://www.pca.state.mn.us/water/stormwater): MPCA regulates the discharge of stormwater and snowmelt runoff from municipal separate storm sewer systems, construction activities, and industrial facilities.
- MDH [Source Water Protection](http://www.health.state.mn.us/divs/eh/water/swp/) (www.health.state.mn.us/divs/eh/water/swp/): MDH works with communities to protect the source(s) of their drinking water.
- DNR and Minnesota Geological Survey [County Geologic Atlas Program](http://www.dnr.state.mn.us/waters/groundwater_section/mapping/index.html) (www.dnr.state.mn.us/waters/groundwater_section/mapping/index.html): Provides additional information on the groundwater resources and hydrogeology of the watershed through maps and reports of geology, groundwater, pollution sensitivity, and special studies.
- MPCA [Household Hazardous Waste](http://www.pca.state.mn.us/waste/household-hazardous-waste-managers-and-operators) (www.pca.state.mn.us/waste/household-hazardous-waste-managers-and-operators): Resources for HHW managers and operators, education resources, searchable by county HHW facilities.

Nutrient Management

This strategy addresses both nutrient and manure management.

Nutrient management concepts are centered on applying crop fertilizer or manure using the right source, right rate, right time, and right place (NRCS Codes 327, 340, 345, 393, 590, 656).

Manure management targets the collection, transportation, storage, processing, and disposal of animal manure.

Existing Programs and Resources

- MDA [Nutrient Management](http://www.mda.state.mn.us/chemicals/fertilizers/nutrient-mgmt.aspx) (www.mda.state.mn.us/chemicals/fertilizers/nutrient-mgmt.aspx). MDA is the lead state agency for all aspects of pesticide and fertilizer environmental and regulatory functions. This page provides information on nutrient management programs, reports, publications, factsheets, and related external sources.
- MDA [Nutrient Management Initiative Program in Minnesota](http://www.mda.state.mn.us/nmi) (www.mda.state.mn.us/nmi): The program assists farmers and crop advisers in evaluating alternative nutrient management practices for their fields.

- MDA [Township Testing Program](http://www.mda.state.mn.us/townshiptesting) (www.mda.state.mn.us/townshiptesting): The program tests private wells for nitrate and pesticides in areas of the state with the greatest potential for nitrate and pesticide contamination.
- MDA [Nitrogen Fertilizer Best Management Practices](http://www.mda.state.mn.us/nitrogenbmps) (www.mda.state.mn.us/nitrogenbmps): Provides nitrogen BMPs for various areas within Minnesota.
- MDA [Minnesota Nitrogen Fertilizer Management Plan](http://www.mda.state.mn.us/chemicals/fertilizers/nutrient-mgmt/nitrogenplan.aspx) (www.mda.state.mn.us/chemicals/fertilizers/nutrient-mgmt/nitrogenplan.aspx): The state's blueprint for preventing or minimizing impacts of nitrogen fertilizer on groundwater.
- MDA [Ag Chemicals & Fertilizers](http://www.mda.state.mn.us/chemicals.aspx) (www.mda.state.mn.us/chemicals.aspx): Promotes proper use, handling, and safety of agriculture chemicals and fertilizers.
- MDA [Monitoring & Assessment for Agricultural Chemicals in the Environment](http://www.mda.state.mn.us/chemicals/pesticides/maace.aspx) (www.mda.state.mn.us/chemicals/pesticides/maace.aspx): Information about agricultural chemical monitoring and assessment programs and additional resources.
- UMN Extension [Nutrient Management](http://www.extension.umn.edu/agriculture/nutrient-management/) (www.extension.umn.edu/agriculture/nutrient-management/): The page focuses on helping farmers and agriculture professionals optimize crop production using appropriate nutrient inputs while minimizing effects on the environment.
- UMN Extension [Best Management Practices for Nitrogen Use in Southeastern Minnesota](http://www.extension.umn.edu/agriculture/nutrient-management/nitrogen/docs/08557-southeastMN.pdf) (www.extension.umn.edu/agriculture/nutrient-management/nitrogen/docs/08557-southeastMN.pdf): Information about best management practices for nitrogen application.
- UMN Extension [Best Management Practices for Nitrogen Use in South-Central Minnesota](http://www.extension.umn.edu/agriculture/nutrient-management/nitrogen/docs/08554-southcentralMN.pdf) (www.extension.umn.edu/agriculture/nutrient-management/nitrogen/docs/08554-southcentralMN.pdf): Information about best management practices for nitrogen application.
- UMN Extension [Nitrogen Application with Irrigation Water: Chemigation](http://www.extension.umn.edu/agriculture/nutrient-management/nitrogen/nitrogen-application-with-irrigation-water-chemigation/) (www.extension.umn.edu/agriculture/nutrient-management/nitrogen/nitrogen-application-with-irrigation-water-chemigation/): Information about risks, benefits, and methods.
- UMN Extension [Crop Calculators](http://www.extension.umn.edu/agriculture/nutrient-management/crop-calculators/) (www.extension.umn.edu/agriculture/nutrient-management/crop-calculators/): Use crop calculators to help determine needed nutrients.
- UMN Extension [Nutrient/Lime Guidelines](http://www.extension.umn.edu/agriculture/nutrient-management/nutrient-lime-guidelines/) (http://www.extension.umn.edu/agriculture/nutrient-management/nutrient-lime-guidelines/). Guidelines for corn, fruit crops, vegetables crops, lawns, turf, gardens, soybeans, sugar beets, wheat, and more.
- NRCS [Nutrient Management Planning](http://www.nrcs.usda.gov/wps/portal/nrcs/detail/mn/technical/ecoscience/nutrient/?cid=nrcs142p2_023693) (www.nrcs.usda.gov/wps/portal/nrcs/detail/mn/technical/ecoscience/nutrient/?cid=nrcs142p2_023693): Information about nutrient management policy and tools for developing nutrient management plans.
- MDA [The Agricultural BMP Handbook for Minnesota \(PDF\)](http://www.eorinc.com/documents/AG-BMPHandbookforMN_09_2012.pdf) (www.eorinc.com/documents/AG-BMPHandbookforMN_09_2012.pdf): A literature review of empirical research on the effectiveness of 30 conservation practices.
- Nutrient Stewardship [What are the 4Rs](http://www.nutrientstewardship.com/4rs) (www.nutrientstewardship.com/4rs): Information about the 4Rs of Nutrient Stewardship.
- MPCA [Manure Management](https://www.pca.state.mn.us/quick-links/feedlot-nutrient-and-manure-management) (https://www.pca.state.mn.us/quick-links/feedlot-nutrient-and-manure-management): Resources such as fact sheets, guidelines, computer tools, and forms for feedlot nutrient and manure management.
- UMN Extension [Manure Management in Minnesota](http://www.extension.umn.edu/agriculture/manure-management-and-air-quality/manure-management-basics/manure-management-in-minnesota/) (www.extension.umn.edu/agriculture/manure-management-and-air-quality/manure-management-basics/manure-management-in-minnesota/): Information about manure characteristics, application, and economics.

- USDA & NRCS [Manure Management in Minnesota](http://www.nrcs.usda.gov/wps/portal/nrcs/detail/mn/technical/ecoscience/nutrient/?cid=nrcs142p2_023688) (www.nrcs.usda.gov/wps/portal/nrcs/detail/mn/technical/ecoscience/nutrient/?cid=nrcs142p2_023688): Basic manure management information.

SSTS Management

Monitoring, maintenance, and/or upgrading of individual septic treatment systems to maintain proper operation and treatment of septage by the system. In some areas, the intensity of use may require upgrading to a sanitary sewer to eliminate risks to the environment.

Existing Programs and Resources

- MPCA [Subsurface Sewage Treatment Systems](https://www.pca.state.mn.us/water/subsurface-sewage-treatment-systems) (https://www.pca.state.mn.us/water/subsurface-sewage-treatment-systems). This program protects public health and the environment through adequate dispersal and treatment of domestic sewage from dwellings or other establishments generating volumes less than 10,000 gallons per day.
- UMN Extension [Septic System Owner's Guide](http://www.extension.umn.edu/environment/housing-technology/moisture-management/septic-system-owner-guide/) (www.extension.umn.edu/environment/housing-technology/moisture-management/septic-system-owner-guide/): Provides information about the basic principles of how a septic systems works and how to operate and maintain the system.

Making Sense of the Regulatory Environment

State agencies and programs play a variety of roles in restoring and protecting groundwater. Understanding the groundwater-related authorities and resources available at the state level and leveraging strengths of local water resource professionals are key to implementing effective groundwater protection strategies. [Figure 26](#) provides a very basic introduction into the roles Minnesota state agencies have for groundwater.

- MDA works with groundwater that is or could be affected by pesticides and/or fertilizers.
- MDH focuses on proper well construction, assessing health risks related to groundwater, and protecting drinking water supplies.
- MPCA works with groundwater that is or could be affected by chemical releases and/or industrial pollutants.
- DNR focuses on assuring the availability of groundwater and protecting groundwater dependent features.

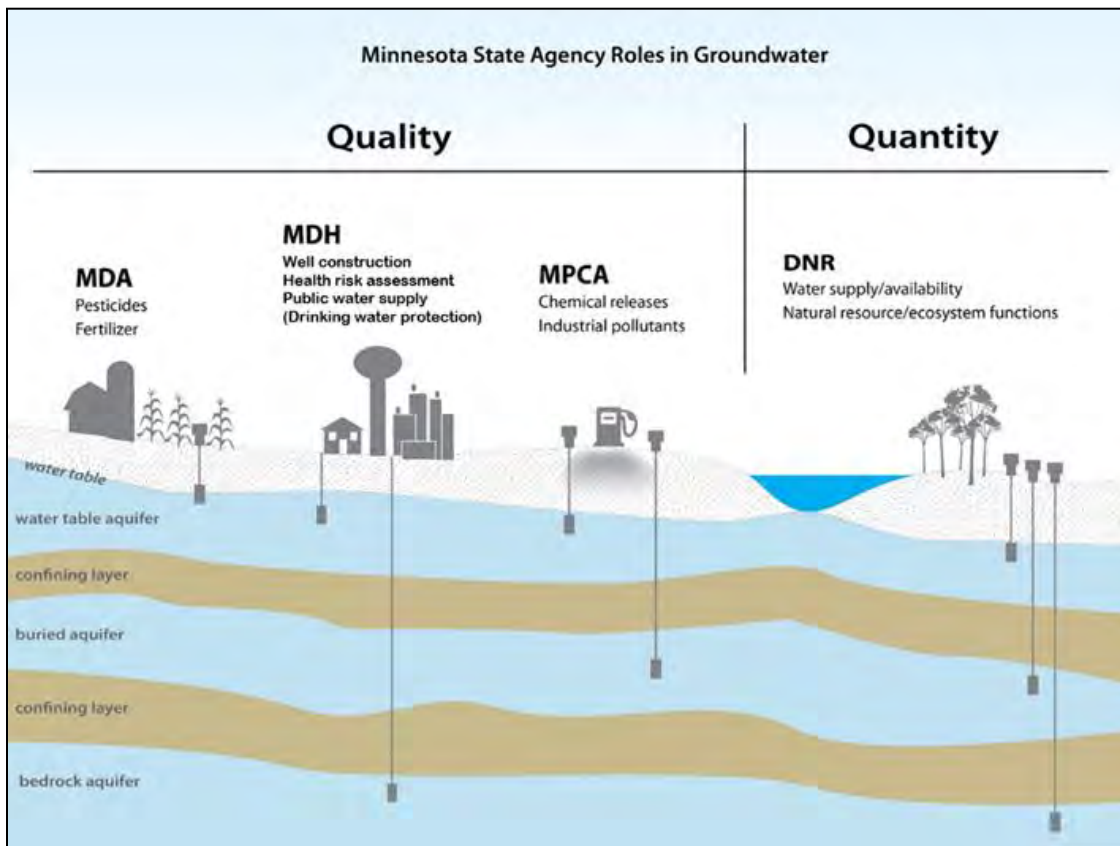


Figure 26: Minnesota State Agency Roles in Groundwater

Each of the state agencies listed above has a variety of programs to help meet their role in groundwater restoration and protection. Programs each of the agencies manage are referenced in the [Descriptions of Supporting Strategies](#) Section. Programs are listed under the restoration or protection strategy they mostly closely correspond to.

[Figure 27](#) provides a more detailed overview of the different roles agencies play within Minnesota's Water Management Framework. Principal water resource management agencies are DNR, MPCA, MDA, BWSR, and MDH. These agencies are responsible for state or federal programs, including:

- the Clean Water Act for MPCA,
- the Safe Drinking Water Act for MDH, and
- Appropriation Permitting for the DNR.

The strength of these programs is that they provide technical assistance and regulatory oversight (including enforcement) to safeguard public health, natural resources, ecological needs, and the environment. These programs are generally effective at managing most types of point sources of contamination in the state and at managing quantity issues at the local and regional level. In addition, these programs often set standards for performance that can be used to drive action.

Two weaknesses of state or federal programs are that they (with few exceptions) are ineffective against non-point sources of contamination and lack authority relative to managing general land use practices. Non-point source management is a difficult issue for water resource managers at all levels. With few regulatory options available, the most common approaches involve the use of financial incentives, technical assistance, and education and communication about sound land and water stewardship. Seldom are representatives from state agencies able to spend the necessary time in the local community to build trust among landowners. As a result, these approaches benefit greatly from the perspectives and relationships that local water resource professionals can forge by working locally.



Figure 27: Roles agencies play within the Minnesota Water Management Framework

Appendices

List of Acronyms

BMP	Best Management Practices
BWSR	Board of Soil and Water Resources
CAFO	Concentrated Animal Feeding Operation
CRP	Conservation Reserve Program
DWSMA	Drinking Water Supply Management Area
EPA	United States Environmental Protection Agency
GRAPS	Groundwater Restoration and Protection Strategies
HUC	Hydrologic Unit Code
IPM	Integrated Pest Management
MCL	Maximum Contaminant Level
MDA	Minnesota Department of Agriculture
MDH	Minnesota Department of Health
DNR	Minnesota Department of Natural Resources
MPCA	Minnesota Pollution Control Agency
MS4	Municipal Separate Storm Sewer Systems
MWI	Minnesota Well Index
NRCS	United States Department of Agriculture Natural Resources Conservation Service
NLCD	National Land Cover Database
NPDES	National Pollutant Discharge Elimination System
PFA	Public Facilities Authority
QBAA	Quaternary Buried Artesian Aquifer
QWTA	Quaternary Water Table Aquifer
RIM	Reinvest in Minnesota Program
SSTS	Subsurface Sewage Treatment System
SDWA	Safe Drinking Water Act
SWCD	Soil and Water Conservation District
TTP	MDA Township Testing Program
UMN	University of Minnesota Extension
USDA	United States Department of Agriculture
USGS	United States Geological Survey

WIMN	What's in My Neighborhood
WHP	Wellhead Protection
WHPAS	Wellhead Protection Areas
WRAPS	Watershed Restoration and Protection Strategy

Glossary of Key Terms

Aquifer

An aquifer is an underground layer of water-bearing permeable rock, rock fractures or unconsolidated materials (gravel, sand, or silt) from which groundwater can be extracted using a water well.

Aquifer Vulnerability

Defined as the ease with which recharge and contaminants from the ground surface can be transmitted into the subsurface aquifer. MDH uses the terminology 'vulnerability'; whereas the MNDNR references 'sensitivity'. Both terms cite the risk to groundwater degradation.

Community Public Water Supply System

A public water supply system that serves at least 25 persons or 15 service connections year-round, which includes municipalities (cities), manufactured mobile home parks, nursing homes, etc.

Drinking Water Supply Management Area (DWSMA)

The surface and subsurface area surrounding a public water supply well, including the wellhead protection area that must be managed by the entity identified in a wellhead protection plan. The boundaries of the DWSMA are roads, public land survey and fractions thereof, property lines, political boundaries, etc. (See MN WHP Rules 4720.5100, Subp. 13.)

Groundwater recharge

The process through which water moves downward from surface water to groundwater. Groundwater recharge is the main way water enters an aquifer.

Hydrologic Unit Code (HUC)

HUCs are assigned by the USGS for each watershed. HUCs are organized in a nested hierarchy by size. For example, the St. Croix River Basin is assigned a HUC-4 of 0703 and the Sunrise River Watershed is assigned a HUC-8 of 07030005.

Maximum Contaminant Level (MCL)

The highest level of a contaminant that EPA allows in drinking water. MCLs ensure that drinking water does not pose either a short-term or long-term health risk. EPA sets MCLs at levels that are economically and technologically feasible.

Protection

This term is used to characterize actions taken in watersheds to maintain conditions and beneficial uses of waters not known to be impaired.

Pollution Sensitivity

The ease with which recharge and contaminants from the ground surface can be transmitted into the subsurface.

Public Water System

A water system with 15 or more service connections or regularly serves at least 25 people for 60 or more days a year. A system that serves water 60 or more days a year is considered to 'regularly serve' water. Public water systems can be publicly or privately owned. Public water systems are subdivided into two categories: community and noncommunity water systems. This division is based on the type of consumer served and the frequency the consumer uses the water.

Restoration

This term is used to characterize actions taken in watersheds to improve conditions to eventually meet water quality standards and achieve beneficial uses of impaired waters.

Source (or Pollutant Source)

Actions, places, or entities that deliver/discharge pollutants (e.g., sediment, phosphorus, nitrogen, pathogens).

Source Water Protection

Protecting sources of water used for drinking, such as streams, rivers, lakes, or underground aquifers.

Transient Noncommunity System

A public water system that serves at least 25 people at least 60 days of the year but does not serve the same 25 people over 6 months of the year (places such as restaurants, campgrounds, hotels, and churches).

Water Budget

An accounting of all the water that flows into and out of a particular area. This area can be a watershed, wetland, lake, or any other point of interest.

Water Table

The boundary between the water filled rock and sediment of an aquifer and the dry rock and sediment above it. The depth to the water table is highly variable. It can range from zero when it is at land surface, such as at a lake or wetland, to hundreds or even thousands of feet deep. In Minnesota, the water table is generally close to the land surface, typically within a few tens of feet in much of the state.

Wellhead Protection (WHP)

A method of preventing well contamination by effectively managing potential contaminant sources in all or a portion of a well's recharge area. This recharge area is known as the wellhead protection area.

Wellhead Protection Area (WHPA)

The surface and subsurface area surrounding a well or well field that supplies a public water system, through which contaminants are likely to move toward and reach the well or well field. This definition is the same for

the federal Safe Drinking Water Act (40 Code of Federal Regulations, Section 1428) and the Minnesota Groundwater Protection Act (Minnesota Statute 103I).

Dataset Sources

- Adams, R., (2016), *Pollution sensitivity of near-surface materials* [electronic file], Minnesota Department of Natural Resources, St. Paul, Minn., Minnesota Hydrogeology Atlas Series HG-02, 15 p., 1 plate, scale 1:1,000,000. Available via Minnesota Department of Natural Resources: [Minnesota Hydrogeology Atlas \(MHA\)](http://www.dnr.state.mn.us/waters/programs/gw_section/mapping/platesum/mha_ps-ns.html) (www.dnr.state.mn.us/waters/programs/gw_section/mapping/platesum/mha_ps-ns.html). [August 8, 2016].
- Jirsa, M.A., Boerboom, T.J., Chandler, V.W., Mossler, J.H., Runkel, A.C., and Setterholm, D.R. (2011), *Geologic Map of Minnesota-Bedrock Geology* [electronic file], Minnesota Geological Survey, St. Paul, Minn., State Map Series S-21, 1 plate, scale 1:500,000. Available via University of Minnesota Digital Conservancy: [S-21 Geologic Map of Minnesota-Bedrock Geology](http://hdl.handle.net/11299/101466) (<http://hdl.handle.net/11299/101466>). [August 9, 2011].
- Minnesota Board of Water and Soil Resources (2018), *State Funded Conservation Easement (RIM Reserve)* [electronic file], St. Paul, Minn.
- Minnesota Department of Health (2017), *Minnesota Drinking Water Information System* [electronic file], St. Paul, Minn.
- Minnesota Department of Health (2017), *Water Chemistry Database* [electronic file], St. Paul, Minn.
- Minnesota Department of Health (2017), *Well Management Section Data System* [electronic file], St. Paul, Minn.
- Minnesota Department of Natural Resources (2017), *MNDNR Permitting and Reporting System 1988-2016* [electronic file], St. Paul, Minn. Available via Minnesota Department of Natural Resources: [Minnesota Water Use Data](http://dnr.state.mn.us/waters/watermgmt_section/appropriations/wateruse.html) (dnr.state.mn.us/waters/watermgmt_section/appropriations/wateruse.html). [August 7, 2017].
- Minnesota Geological Survey and Minnesota Department of Health (2017), *Minnesota County Well Index* [electronic file], Minnesota Department of Health, St. Paul, Minn. Available via Minnesota Geological Survey: [Index of /pub2/cwi4/](ftp://mgssun6.mngs.umn.edu/pub2/cwi4/) (<ftp://mgssun6.mngs.umn.edu/pub2/cwi4/>). [2016-2017].
- Minnesota Pollution Control Agency (2017), *Closed Landfill Program Facilities* [electronic file], St. Paul, Minn. Available via Minnesota Geospatial Commons: [MPCA Closed Landfill Facilities](https://gisdata.mn.gov/dataset/env-closed-landfill) (<https://gisdata.mn.gov/dataset/env-closed-landfill>). [June 15, 2017].
- Minnesota Pollution Control Agency (2016), *What's In My Neighborhood* [electronic file], St. Paul, Minn. Available via Minnesota Pollution Control Agency: [What's in My Neighborhood](https://www.pca.state.mn.us/data/whats-my-neighborhood) (<https://www.pca.state.mn.us/data/whats-my-neighborhood>). [December 19, 2016].
- Multi-Resolution Land Characteristics Consortium (2011), *National Land Cover Database 2011* [electronic file], U.S. Geological Survey, Reston, Va. Available via USDA-NRCS Geospatial Data Gateway: [1-Where](http://datagateway.nrcs.usda.gov/GDGOrder.aspx/) (<http://datagateway.nrcs.usda.gov/GDGOrder.aspx/>). [August 25, 2014].

Additional Resources

The following resources may be helpful for gathering data and learning more about groundwater in the watershed. The resources are listed alphabetically by the topic they address.

Type of Information	Where you can get more information
Aquifer Vulnerability	<p>For information on aquifer vulnerability ratings DWSMA, please contact MDH or the public water supplier in question.</p> <ul style="list-style-type: none"> ▪ health.drinkingwater@state.mn.us ▪ 651-201-4700
Groundwater Quality Data	<p>Find water-related monitoring data on Minnesota streams, lakes, wells, Superfund Program, closed landfills, other remediation sites, open landfills, data from MDA, MPCA, and USGS.</p> <ul style="list-style-type: none"> ▪ Environmental Quality Information System (EQuIS) (https://www.pca.state.mn.us/quick-links/environmental-quality-information-system-equis) ▪ Environmental data (https://www.pca.state.mn.us/environmental-data) ▪ Groundwater (https://www.pca.state.mn.us/water/groundwater)
Drinking Water Annual Reports	<p>MDH has issued a report regarding the state of drinking water in Minnesota each year since 1995. These reports provide test results, an overview on the role of the Department’s drinking water program in monitoring and protecting drinking water, and an examination emerging issues.</p> <ul style="list-style-type: none"> ▪ Drinking Water Protection Annual Reports (www.health.state.mn.us/divs/eh/water/com/dwar/)
DWSMA maps and Shapefiles	<p>PDF maps and shape files of the DWSMAs can be downloaded from the MDH website.</p> <ul style="list-style-type: none"> ▪ Source Water Assessments (www.health.state.mn.us/divs/eh/water/swp/swa/) ▪ Maps and Geospatial Data (www.health.state.mn.us/divs/eh/water/swp/maps/index.htm)
Point Source Pollution	<p>Visit the following sites for more information on point source pollution:</p> <ul style="list-style-type: none"> ▪ Nonpoint Source Pollution (oceanservice.noaa.gov/education/kits/pollution/03pointsource.html) ▪ Point Source Pollution (www.mncenter.org/point-source-pollution.html) ▪ Water Permits and Forms (https://www.pca.state.mn.us/water/water-permits-and-forms)
Well Construction and Use Data	<p>Most of the construction and use data pertaining to wells in the state is housed in the Minnesota Well Index (MWI), an online database. All of the key data in the MWI is also available in spatial datasets, designed for use in geographic information systems (GIS). The Minnesota Geological Survey and MDH work together to maintain</p>

Type of Information	Where you can get more information
	<p>and update the data in the Index. MWI provides basic information, such as location, depth, geology, construction and static water level, for many wells and borings drilled in Minnesota. It by no means contains information for all the wells and borings and the absence of information about a well on a property does not mean there is no well on that property.</p> <ul style="list-style-type: none"> ▪ Welcome to the Minnesota Well Index (MWI) (www.health.state.mn.us/divs/eh/cwi/)
Wellhead Protection Plans	<p>These plans can be obtained directly from the communities or from MDH with permission from the communities. Water chemistry data collected from these systems can be provided by request to MDH.</p> <ul style="list-style-type: none"> ▪ health.drinkingwater@state.mn.us ▪ 651-201-4700

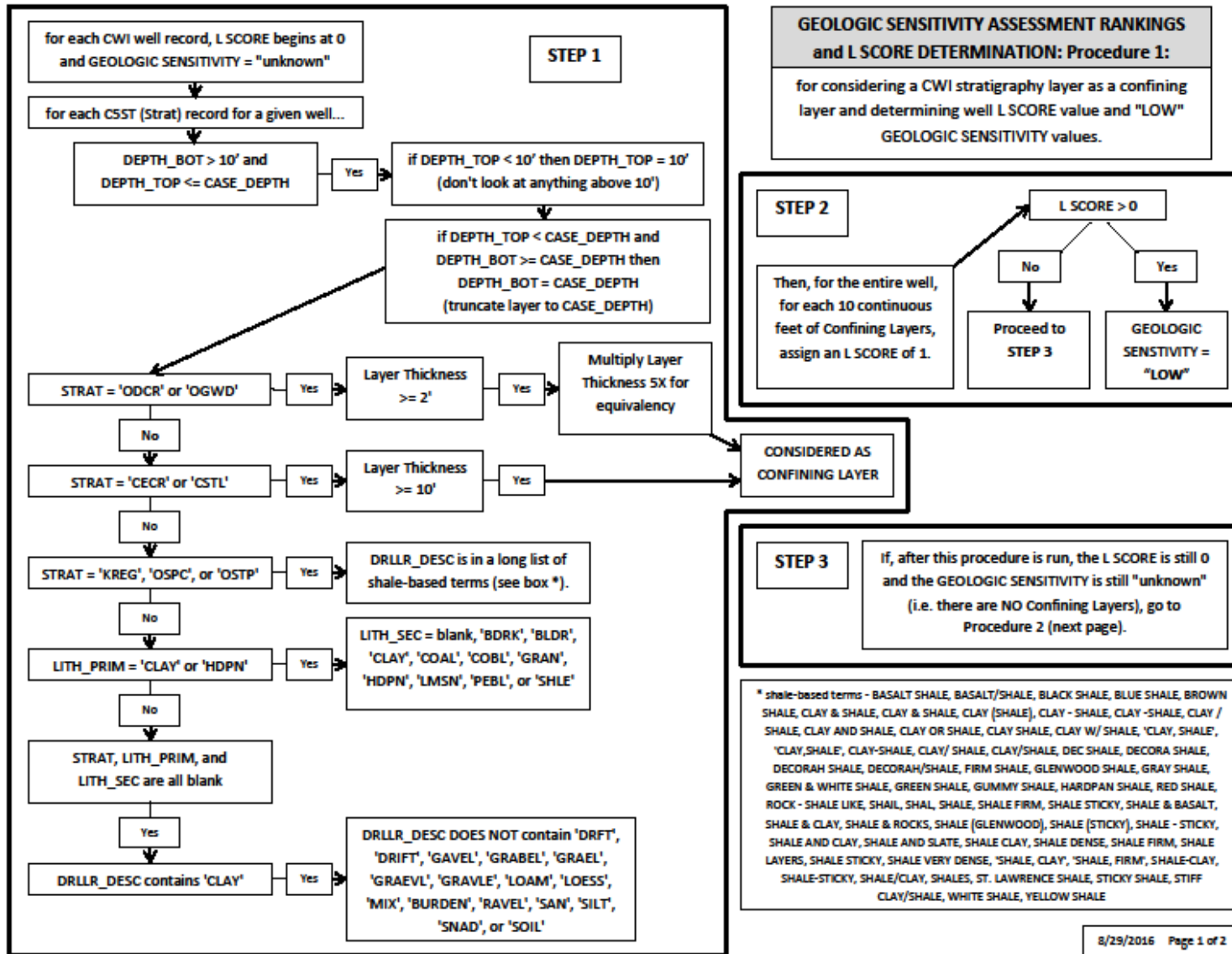
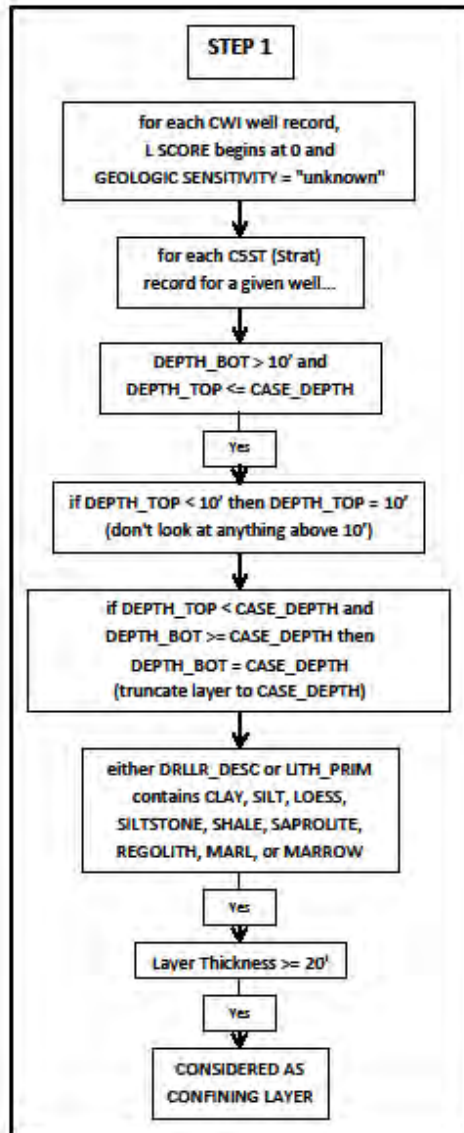
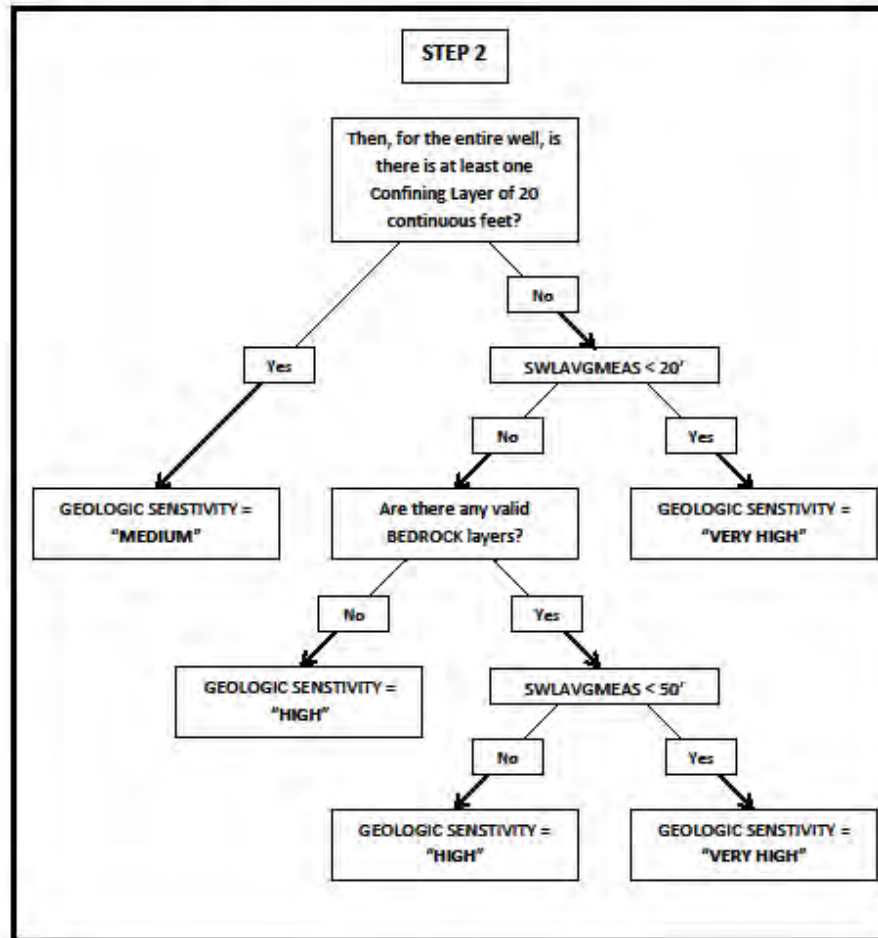


Figure 28: Sensitivity Assessment and Calculation for Pollution Sensitivity of Wells (Figure 9)



GEOLOGIC SENSITIVITY ASSESSMENT RANKINGS: Procedure 2:
for determining "MEDIUM", "HIGH", and "VERY HIGH" GEOLOGIC SENSITIVITY values.



3/29/2016 page 2 of 2

Figure 29: Sensitivity Assessment and Calculation for Pollution Sensitivity of Wells (Figure 9) continue

References

- Adams, Roberta; Barry, John; and Green, Jeff (2016). Minnesota Regions Prone to Surface Karst Feature Development (PDF) (files.dnr.state.mn.us/waters/groundwater_section/mapping/gw/gw01_report.pdf). Series GW-01.
- Boerboom, T.J.. (2001). C-13: Geologic atlas of Pine County, Minnesota [Part A]. Minnesota Geological Survey. Retrieved from the University of Minnesota Digital Conservancy, <http://hdl.handle.net/11299/58554>.
- Boerboom, Terrence J.. (2009). C-19 Geologic atlas of Carlton County, Minnesota [Part A]. Minnesota Geological Survey. Retrieved from the University of Minnesota Digital Conservancy, <http://hdl.handle.net/11299/58760>.
- Geologic Sensitivity Project Workgroup (1991), *Criteria and guidelines for assessing pollution sensitivity of ground water resources in Minnesota*, Minnesota Department of Natural Resources, Division of Waters, St. Paul, Minn., 122 p.
- Kroening, S. and Ferrey, M. (2013), The Condition of Minnesota's Groundwater, 2007-2011. Document number: wq-am1-06
- Minnesota State Agency Workgroup under the direction of the U.S. EPA (1998), *Guidance or Mapping Nitrate in Minnesota Groundwater*, p 7.
- M.L. Erickson and R.J. Barnes, 'Arsenic in Groundwater: Recent Research and Implications for Minnesota,' CURA Reporter 34,2 (2004): 1–7; and M.L. Erickson and R.J. Barnes, 'Glacial Sediment Causing Regional-Scale Elevated Arsenic in Drinking Water,' Ground Water 43 (2005): 796–805.
- Minnesota Department of Agriculture (2014), 2014 Water Quality Monitoring Report.
- Minnesota Department of Agriculture (2015), 2015 Nitrogen Fertilizer Management Plan.
- Minnesota Department of Natural Resource, MGS, UMD (1997), *Geomorphology of Minnesota, Scale 1:100,000*.
- Morey, G.B.; Meints, J.P.. (2000). S-20 Geologic map of Minnesota, bedrock geology. Minnesota Geological Survey. Retrieved from the University of Minnesota Digital Conservancy, [S-20 Geologic map of Minnesota, bedrock geology](http://hdl.handle.net/11299/60086) (<http://hdl.handle.net/11299/60086>).
- Mueller, D.K., and Helsel, D.R., 1996, Nutrients in the Nation's water--Too much of a good thing?: U.S. Geological Survey Circular 1136, 24 p.
- USGS. 2017. National Land Cover Database (NLCD) Land Cover Collection. Available at [NLCD Land Cover Collection](https://catalog.data.gov/dataset/national-land-cover-database-nlcd-land-cover-collection) (<https://catalog.data.gov/dataset/national-land-cover-database-nlcd-land-cover-collection>).
- Warner, K.L. and Arnold, T.L., 2010, [Relations that affect the probability and prediction of nitrate concentration in private wells in the glacial aquifer system in the United States](https://pubs.usgs.gov/sir/2010/5100/) (<https://pubs.usgs.gov/sir/2010/5100/>): U.S. Geological Survey Scientific Investigations Report 2010-5100, 73 p.