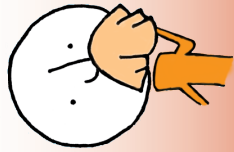
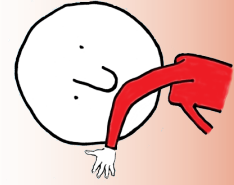


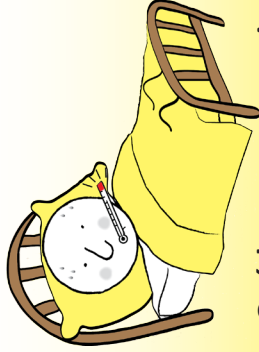
**Combata la gripe**



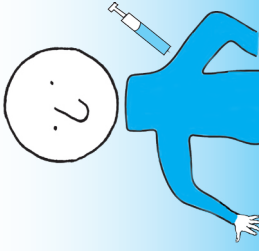
**¡Tápese al toser!**



**Lávese las manos.**

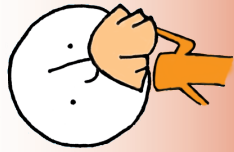


**Quédese en su casa si está enfermo.**

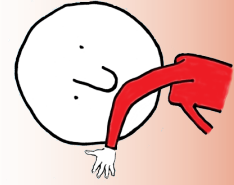


**Vacúnese.**

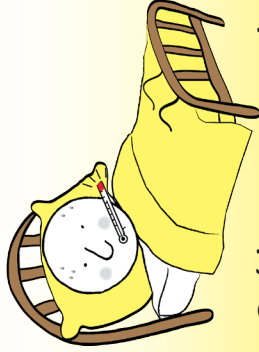
**Combata la gripe**



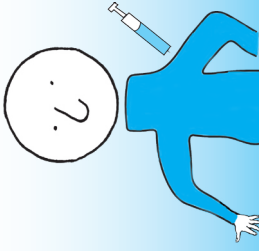
**¡Tápese al toser!**



**Lávese las manos.**

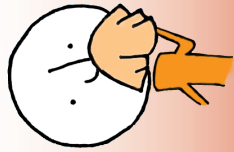


**Quédese en su casa si está enfermo.**

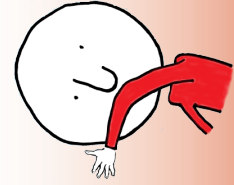


**Vacúnese.**

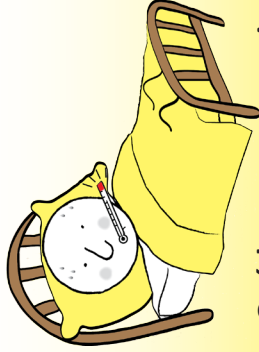
**Combata la gripe**



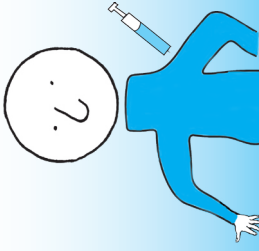
**¡Tápese al toser!**



**Lávese las manos.**

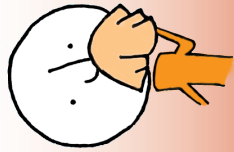


**Quédese en su casa si está enfermo.**

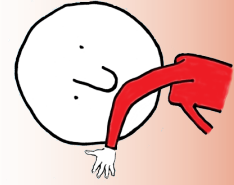


**Vacúnese.**

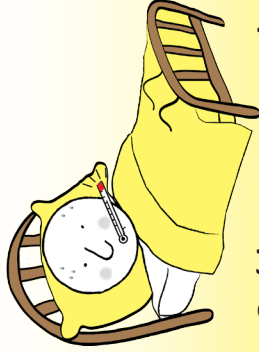
**Combata la gripe**



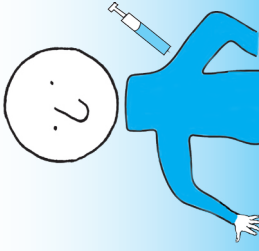
**¡Tápese al toser!**



**Lávese las manos.**



**Quédese en su casa si está enfermo.**



**Vacúnese.**

# FIGHT the FLU

Combata la gripe

Questions about flu?

Minnesota Department  
of Health

[www.mdhflu.com](http://www.mdhflu.com)

Centers for Disease Control

[www.cdc.gov](http://www.cdc.gov)

1-800-CDC-INFO  
(800-232-4636)

TTY: 1-888-232-6348

24 hours/every day

Your city or county public  
health department

# FIGHT the FLU

Combata la gripe

Questions about flu?

Minnesota Department  
of Health

[www.mdhflu.com](http://www.mdhflu.com)

Centers for Disease Control

[www.cdc.gov](http://www.cdc.gov)

1-800-CDC-INFO  
(800-232-4636)

TTY: 1-888-232-6348

24 hours/every day

Your city or county public  
health department

# FIGHT the FLU

Combata la gripe

Questions about flu?

Minnesota Department  
of Health

[www.mdhflu.com](http://www.mdhflu.com)

Centers for Disease Control

[www.cdc.gov](http://www.cdc.gov)

1-800-CDC-INFO  
(800-232-4636)

TTY: 1-888-232-6348

24 hours/every day

Your city or county public  
health department

# FIGHT the FLU

Combata la gripe

Questions about flu?

Minnesota Department  
of Health

[www.mdhflu.com](http://www.mdhflu.com)

Centers for Disease Control

[www.cdc.gov](http://www.cdc.gov)

1-800-CDC-INFO  
(800-232-4636)

TTY: 1-888-232-6348

24 hours/every day

Your city or county public  
health department