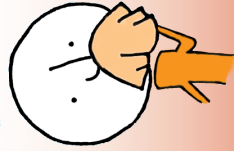


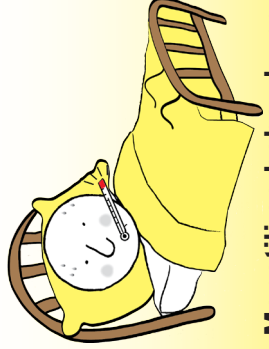
**Labanan ang Flu**



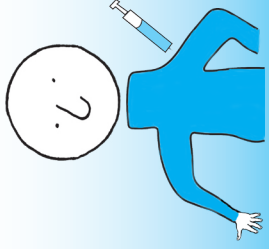
**Takpan ang  
iyong pag-ubo!**



**Hugasan ang iyong  
mga kamay.**

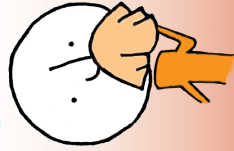


**Manatili sa bahay kung  
may sakit.**



**Magpabakuna.**

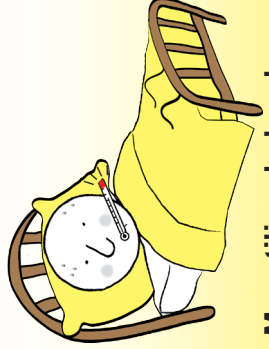
**Labanan ang Flu**



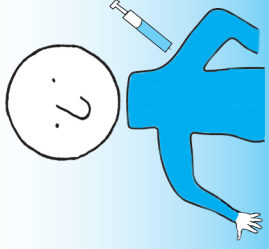
**Takpan ang  
iyong pag-ubo!**



**Hugasan ang iyong  
mga kamay.**

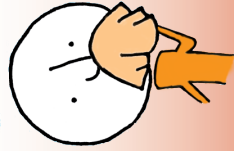


**Manatili sa bahay kung  
may sakit.**



**Magpabakuna.**

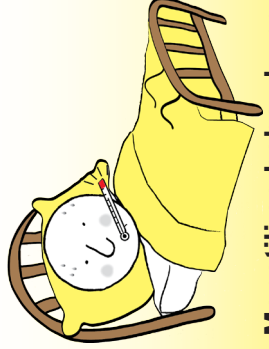
**Labanan ang Flu**



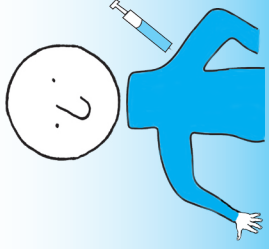
**Takpan ang  
iyong pag-ubo!**



**Hugasan ang iyong  
mga kamay.**

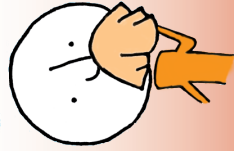


**Manatili sa bahay kung  
may sakit.**



**Magpabakuna.**

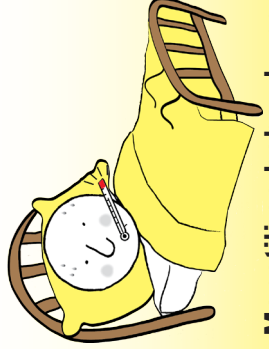
**Labanan ang Flu**



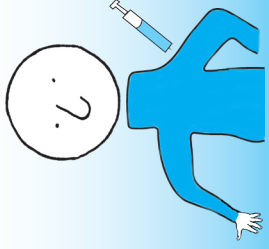
**Takpan ang  
iyong pag-ubo!**



**Hugasan ang iyong  
mga kamay.**



**Manatili sa bahay kung  
may sakit.**



**Magpabakuna.**

# **FIGHT** the **FLU**

## **Labanan ang Flu**

Questions about flu?

Minnesota Department  
of Health

[www.mdhflu.com](http://www.mdhflu.com)

Centers for Disease Control

[www.cdc.gov](http://www.cdc.gov)

1-800-CDC-INFO  
(800-232-4636)

TTY: 1-888-232-6348

24 hours/every day

Your city or county public  
health department

# **FIGHT** the **FLU**

## **Labanan ang Flu**

Questions about flu?

Minnesota Department  
of Health

[www.mdhflu.com](http://www.mdhflu.com)

Centers for Disease Control

[www.cdc.gov](http://www.cdc.gov)

1-800-CDC-INFO  
(800-232-4636)

TTY: 1-888-232-6348

24 hours/every day

Your city or county public  
health department

# **FIGHT** the **FLU**

## **Labanan ang Flu**

Questions about flu?

Minnesota Department  
of Health

[www.mdhflu.com](http://www.mdhflu.com)

Centers for Disease Control

[www.cdc.gov](http://www.cdc.gov)

1-800-CDC-INFO  
(800-232-4636)

TTY: 1-888-232-6348

24 hours/every day

Your city or county public  
health department

# **FIGHT** the **FLU**

## **Labanan ang Flu**

Questions about flu?

Minnesota Department  
of Health

[www.mdhflu.com](http://www.mdhflu.com)

Centers for Disease Control

[www.cdc.gov](http://www.cdc.gov)

1-800-CDC-INFO  
(800-232-4636)

TTY: 1-888-232-6348

24 hours/every day

Your city or county public  
health department